



HP 15-f033wm Battery Replacement

How to remove the battery on a HP 15-f033wm

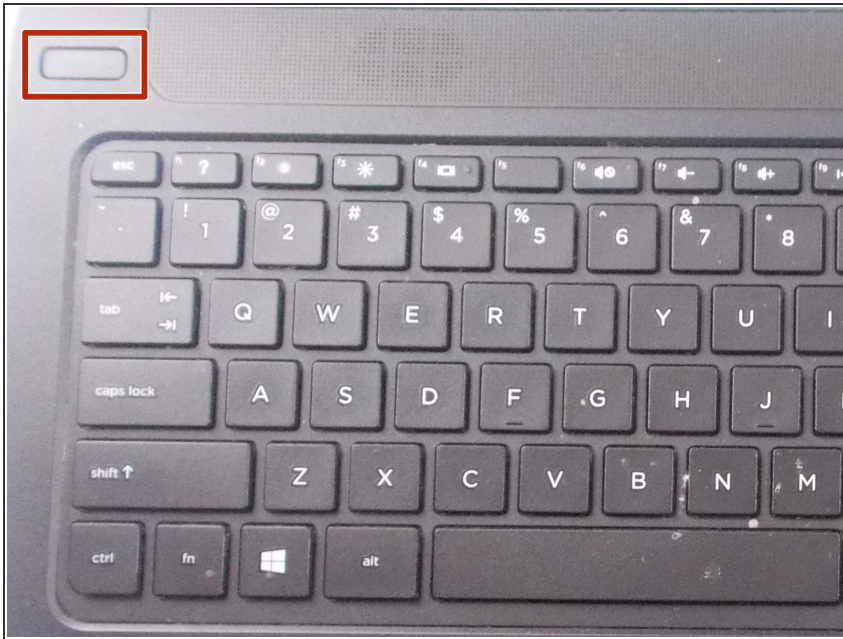
Written By: Aaron Chabot



INTRODUCTION

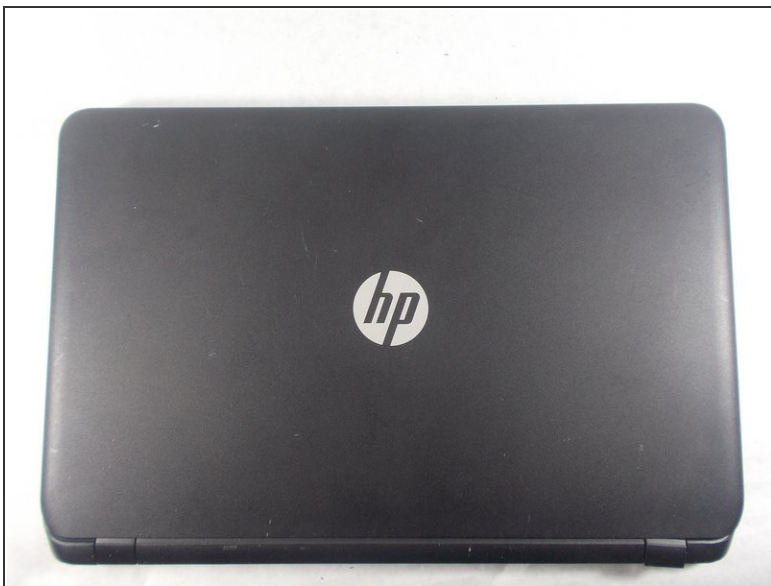
In the case that the laptop only powers up when the adapter is plugged in, regardless of charging time, then the battery is faulty. This guide will show how to remove the faulty battery.

Step 1 — Battery



- Turn power off using the power button located in the top left corner of the keyboard. Press and hold the power button for 3 seconds until it turns off.

Step 2



- Close the laptop and flip it over so that the HP cover logo is on the underside of the laptop.

Step 3



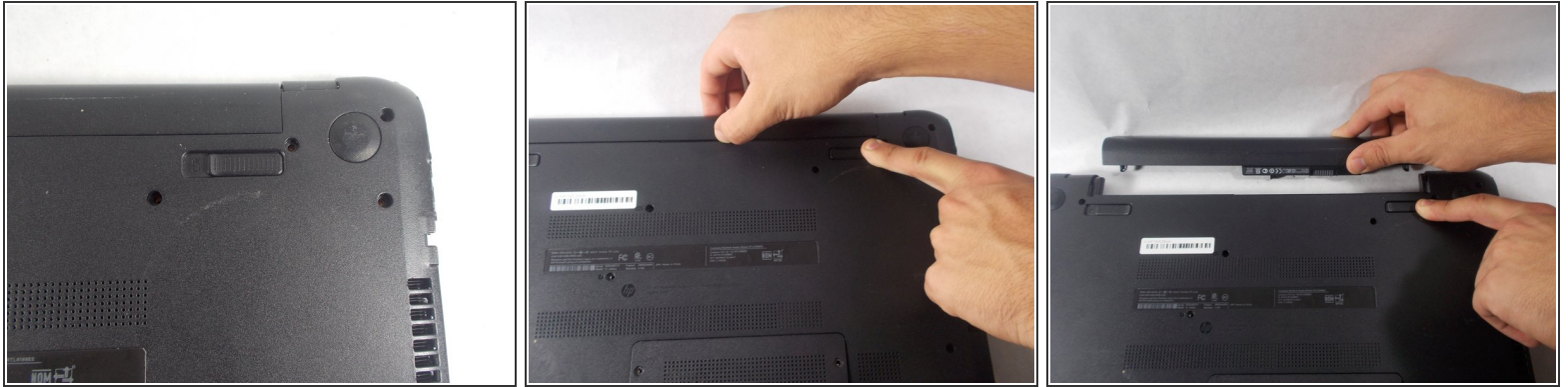
- Locate the battery and the two switches that release the battery when they are unlocked.

Step 4



- Slide the left switch to the right so that the icon of a locked padlock is no longer visible and the icon of an unlocked padlock is now visible.

Step 5



- With your left hand, slide the right switch to the left and hold it in place. This will unlock the battery and allow you to easily slide it out of its port.
- While holding the switch in place, use your right hand to gently remove the battery from its port.

To reassemble your device, follow these instructions in reverse order.