



Lenovo G50-80 80E5 Bottom Access Panel Replacement

This guide will instruct the user how to remove the bottom access panel of their laptop.

Written By: Brett Bousquet



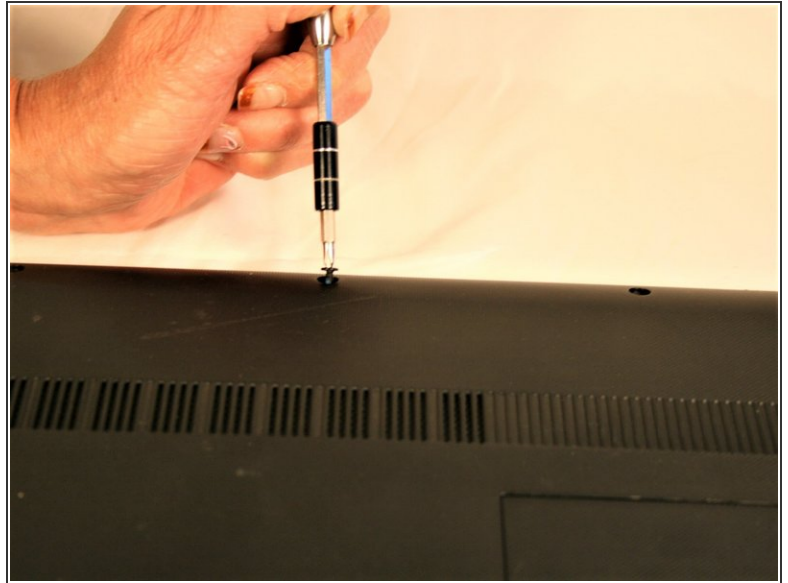
INTRODUCTION

This guide will instruct the user how to remove the bottom access panel of their laptop for replacement, or to allow access to other parts for repair or replacement.

TOOLS:

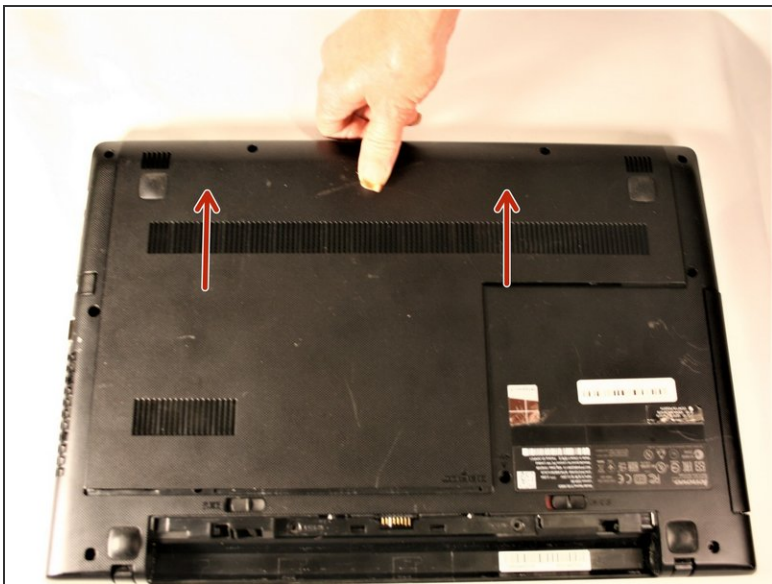
- [Phillips #0 Screwdriver](#) (1)
-

Step 1 — Bottom Access Panel



- Locate and remove the 3 screws securing the outer cover of the laptop.

Step 2



- slide cover away from hinges and lift panel off.

To reassemble your device, follow these instructions in reverse order.