



Gateway MS2370 Battery Replacement

This guide will go over the steps needed to remove the battery from the Gateway MS2370 laptop.

Written By: Mathieu Bolduc-Clayton



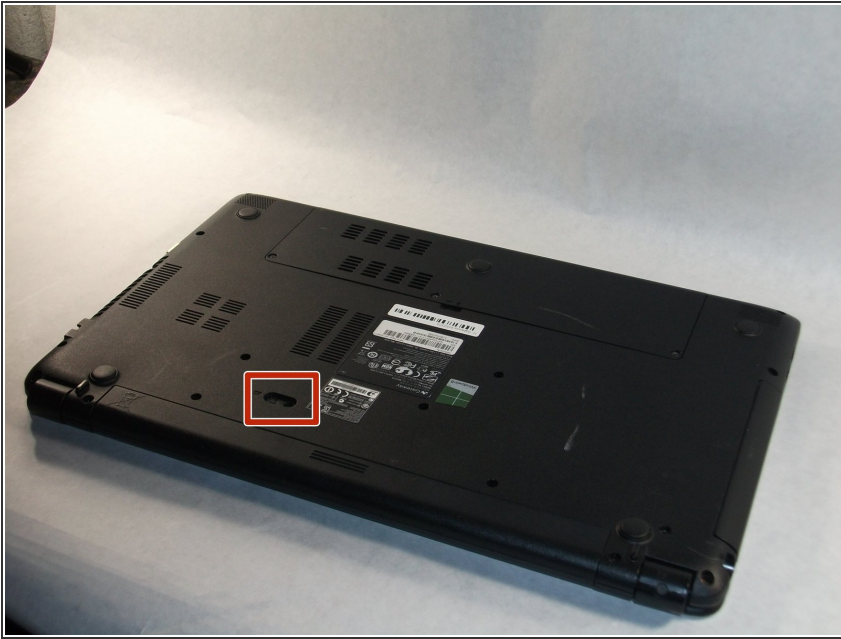
INTRODUCTION

Use this guide to remove the battery from the Gateway MS2370 laptop.

TOOLS:

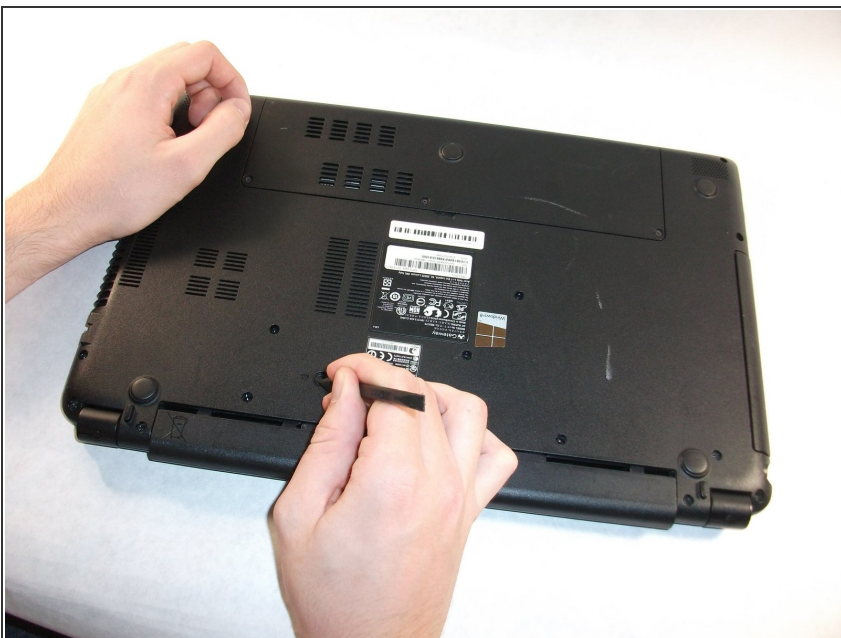
- [Spudger](#) (1)
-

Step 1 — Battery



- Make sure the laptop is turned off and flipped over so that the bottom is facing up. Then, locate the battery clip as shown.

Step 2



- Either using your fingers or a plastic spudger push the battery clip to the left to release battery.

Step 3



- Pull the battery from the laptop to remove it.

To reassemble your device, follow these instructions in reverse order.