



Harman Kardon Esquire Mini Front Panel Replacement

Use this guide if you need to replace the front panel or get access to internal components.

Written By: yousef aljeemaz



INTRODUCTION

This guide will help you remove the front panel of the Harman Kardon Esquire Mini. This guide is very important because all of the components that needs to be replaced, if necessary, will require the removal of the front panel. A plastic opening tool and a PH0 screwdriver will be needed to remove the front panel.

TOOLS:

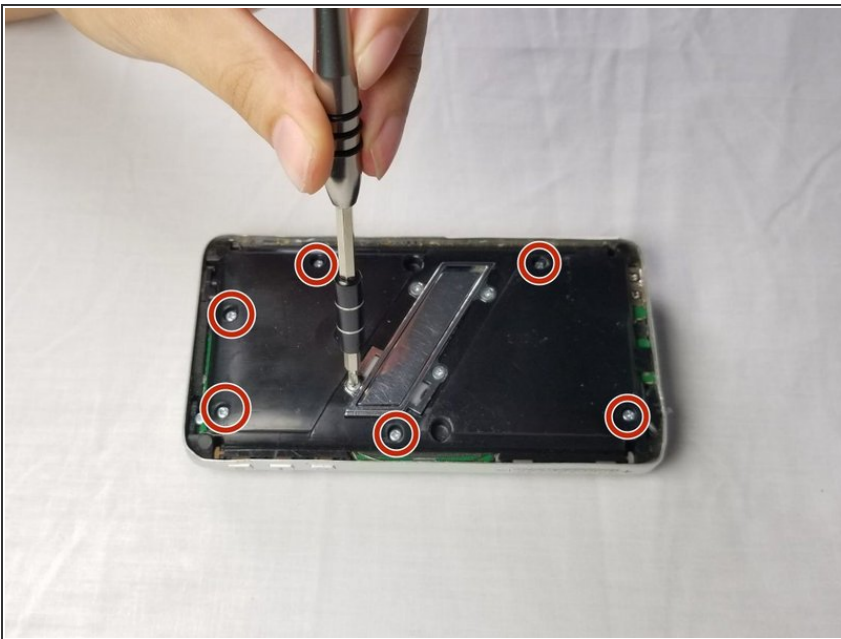
- [Phillips #0 Screwdriver](#) (1)
 - [iFixit Opening Tools](#) (1)
-

Step 1 — Front Panel



- Using the plastic opening tool, to open the back panel of the device. Start on the longer sides to avoid bending the metal frame at the plug ports.
- Push down on the plastic opening tool, and push the back panel, repeat this for the 4 sides of the device.

Step 2



- Using the PH0 screw driver, remove the 7.5 mm screws by turning in a counter-clockwise direction. There are 6 screws on the front panel.
- Remove all of the 7.5 mm screws, by repeating the same step above. It is not necessary to remove the stand-leg.
- After unscrewing the 7.5 mm screws, just lift the plastic and you will see the motherboard.

To reassemble your device, follow these instructions in reverse order.