



# Ricoh Theta S Battery Replacement

Replace the internal battery pack.

Written By: Bradley Sutton



---

## INTRODUCTION

Follow this guide to replace the battery of your Ricoh Theta S. Be aware that any replacement or disassembly of the original product may void the manufacturer warranty.

---

### TOOLS:

- [Spudger](#) (1)
  - [Phillips #00 Screwdriver](#) (1)
-

## Step 1 — Outer Case



- Wedge the spudger underneath the small plastic square located on the bottom of the device.
- Move the spudger to remove the plastic cover.

## Step 2



- Use a Phillips #00 screwdriver to remove the four 3-mm screws located on the bottom of the device.

### Step 3



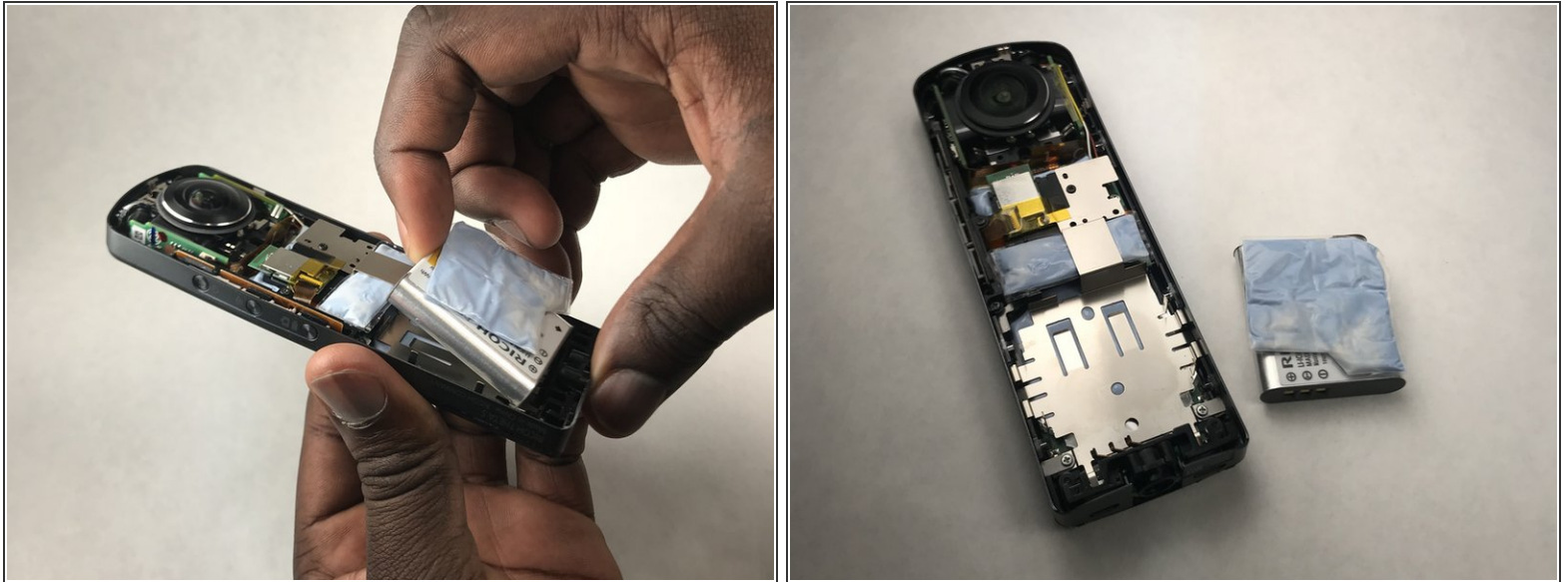
- Insert the plastic opening tool in between the panels shown.
- Apply pressure to unlatch the 9 spring clips located around the perimeter of the device.
- Lift the panel from the device.

### Step 4 — Battery



- The battery is located near the bottom of the device.
- Flip the plastic containing thermal compound over so it is resting on top of the battery.

## Step 5



- Lift the battery out of the device, beginning with the end closest to the camera.

To reassemble your device, follow these instructions in reverse order.

This document was last generated on 2019-08-03 06:05:49 PM.