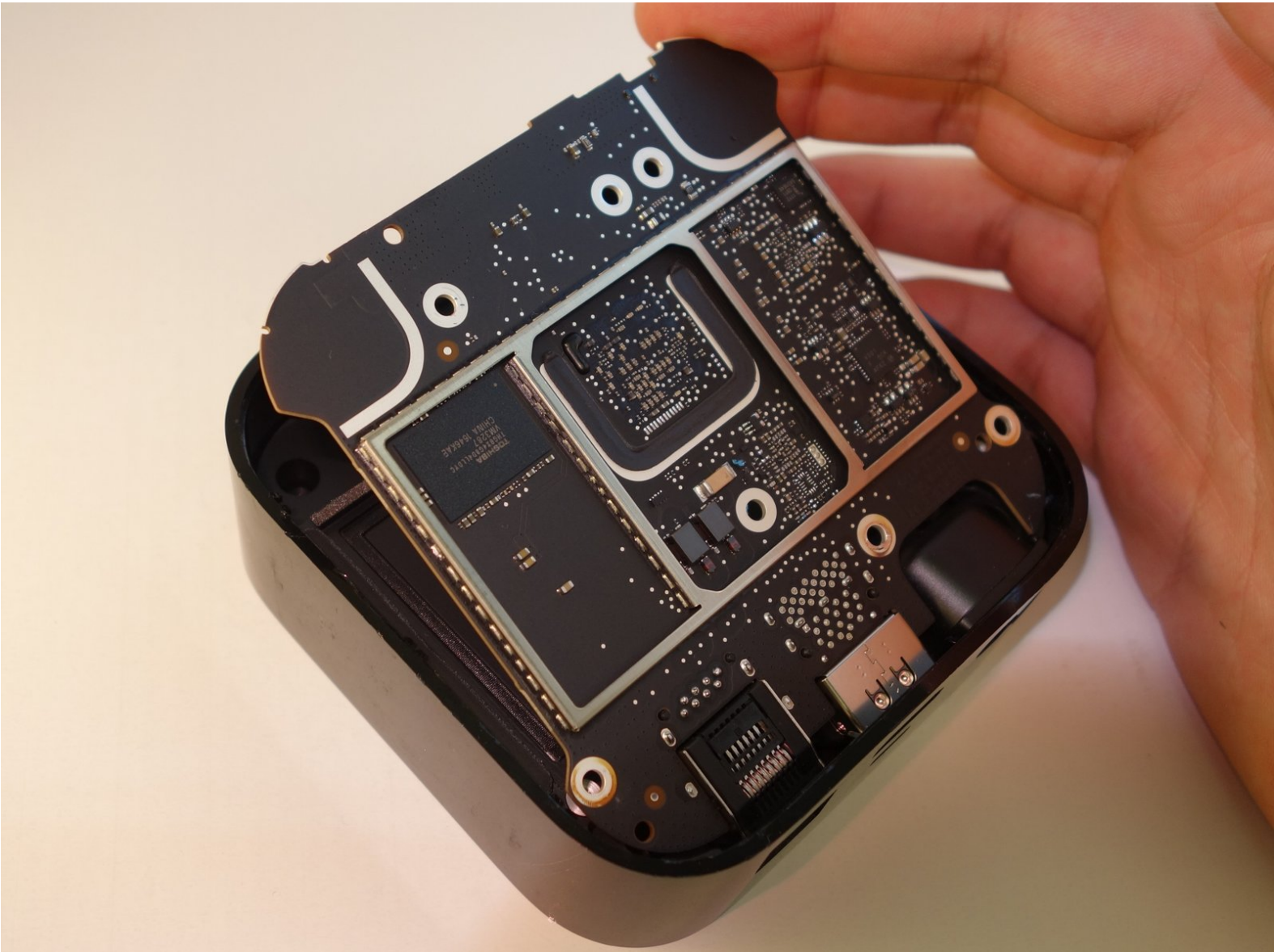




# Apple TV 4th Generation Logic Board Replacement

How to remove the logic board of the Apple TV so it may be replaced.

Written By: Eric Arnold



---

## INTRODUCTION

This guide will show you how to remove the logic board of the Apple TV so it may be replaced.

---

### TOOLS:

- [T7 Torx Screwdriver](#) (1)
  - [T6 Torx Screwdriver](#) (1)
  - [iFixit Opening Tools](#) (1)
-

## Step 1 — Remove the Heatsink



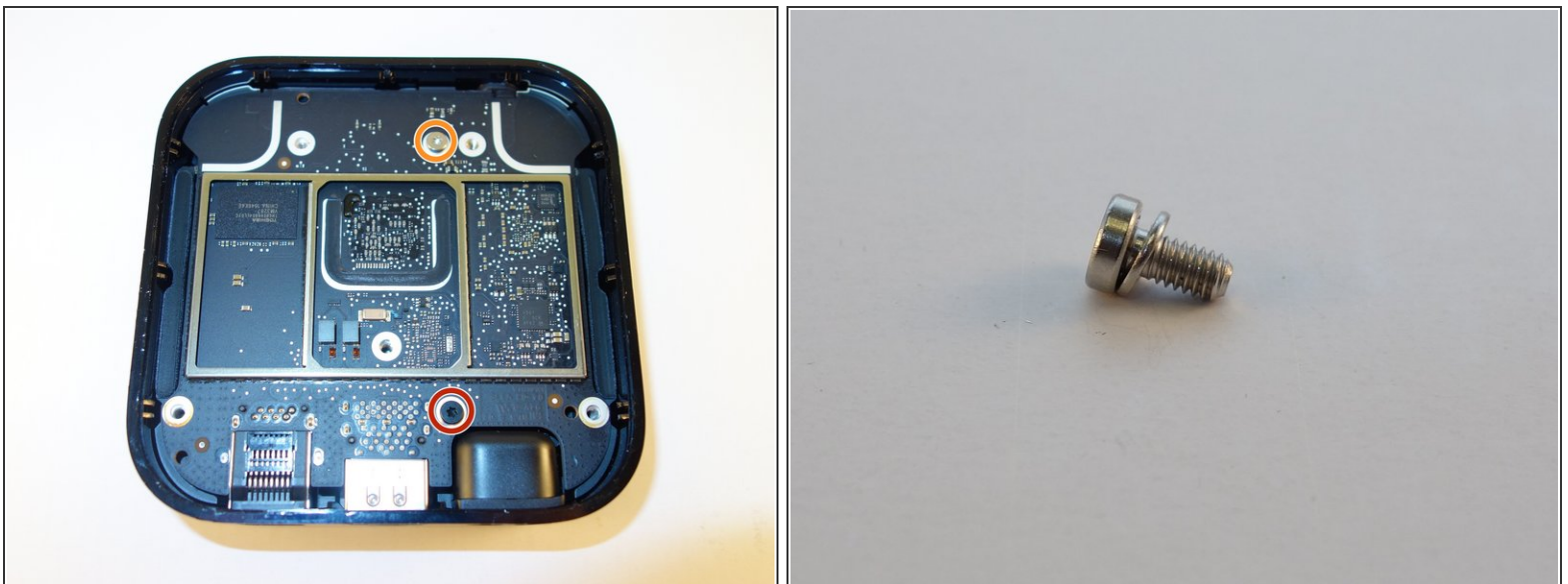
- Unplug all cables from the Apple TV before disassembly and flip the device over.
  - Using the widest plastic opening tool, force its sharp end into the seam between the Apple TV's bottom plate and its outer casing. Starting on the side with the ports, insert the tool so its tip is angled upward when leverage is applied.
  - Pry the bottom plate away from the case, starting with the edge closest to the bottom of the apple. Work your way around the plate until all clips are disconnected.
  - With the plastic clips free, lift the bottom plate.
- i** The bottom plate is held in place by plastic clips that correspond to indentations on the bottom plate. These indentations break easily, as evidenced by the third photo (breakage will not prevent the plate from going back on). To avoid breakage, apply force at the location of these clips, starting from the middle.

## Step 2 — Removing the Cap



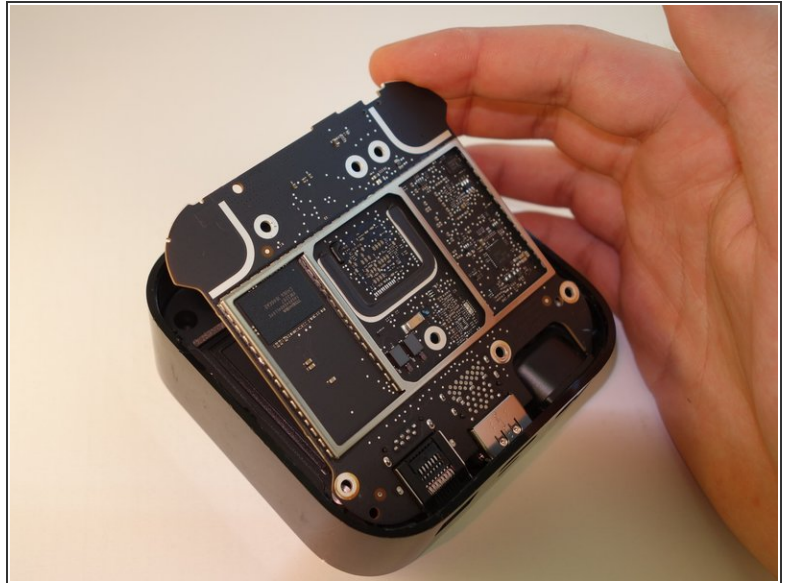
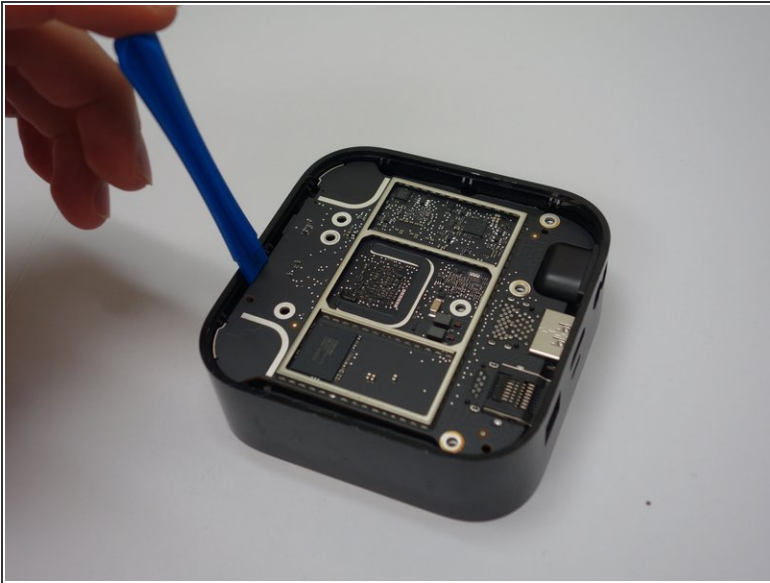
- Remove the five (5) 7mm T7 Torx screws.
- Pull upward on the edges of the shield.
- ⚠ Avoid disturbing the square of gray thermal paste centered on the opposite side of the heatsink/EMI shield during removal.

## Step 3 — Logic Board



- Remove the 4mm T7 Torx screw.
- Remove the 5mm T7 Torx screw and its accompanying washer.
- ⓘ The silver screw is accompanied by a washer that is easily lost.

## Step 4



- Use the plastic opening tool to tip the board upward.

⚠ Avoid disturbing the square of gray thermal paste centered on top of the power supply/heatsink during removal.

To reassemble your device, follow these instructions in reverse order.