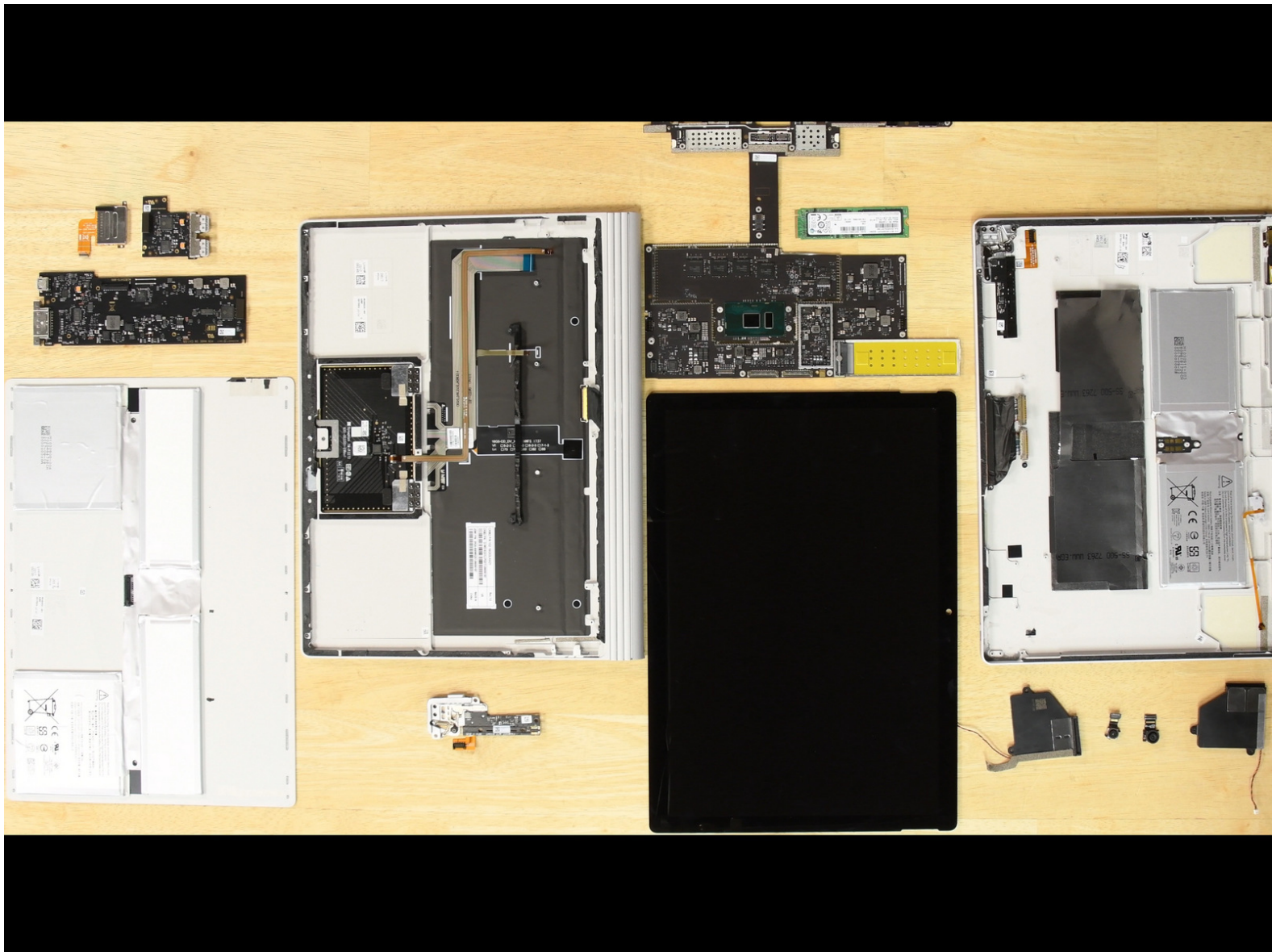




Microsoft Surface Book 2 Teardown

Microsoft Surface Book 2 teardown done on 11/17/2017.

Written By: Michael Degnan



INTRODUCTION

This is the Microsoft Surface Book 2, and just like every Surface device we've done a teardown on this year it scored horribly on our repairability scale. How bad did it do? We gave it a 1 out of 10, which to be honest is at least a little better than the Surface laptop which got a zero but still. So today I'll be essentially walking you through how to design a device that's terrible for repair.

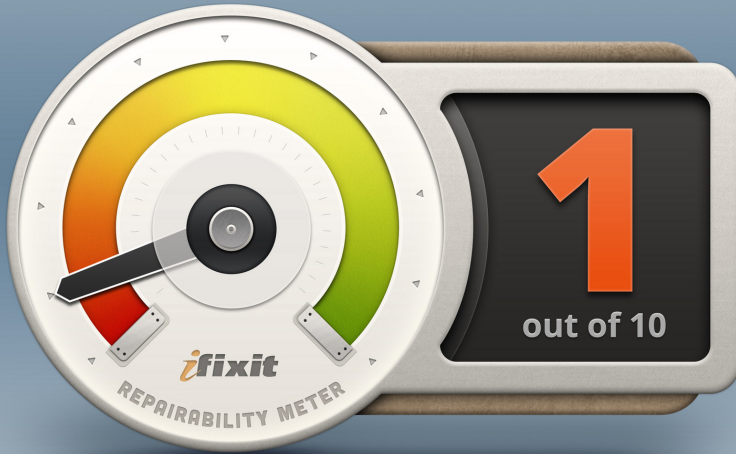


TOOLS:

- [T4 Torx Screwdriver](#) (1)
 - [iFixit Opening Picks set of 6](#) (1)
 - [Spudger](#) (1)
 - [iOpener](#) (1)
 - [Tweezers](#) (1)
-

Step 1 — Final Thoughts

REPAIRABILITY SCORE:



- After the difficult opening procedure, the SSD can be replaced.
- The display assembly consists of a fused glass panel and LCD, and is difficult to remove and replace.
- The processor and RAM are soldered to the motherboard.
- Strong adhesive holds many components in place, including the display, base cover, and both batteries.
- Many components are on the backs of their respective boards, requiring motherboard removal to replace simple components.

This document was last generated on 2017-11-17 03:46:12 PM.