



Toshiba Satellite Radius P55W-B5220 Hard Drive Replacement

This guide will explain how to remove the hard drive from the Toshiba Satellite Radius P55W-B5220.

Written By: Ashley Egenti



INTRODUCTION

The hard drive is a high-capacity, self-contained storage device containing a read-write mechanism. If defective, this guide will instruct you on how to remove and replace your hard drive.

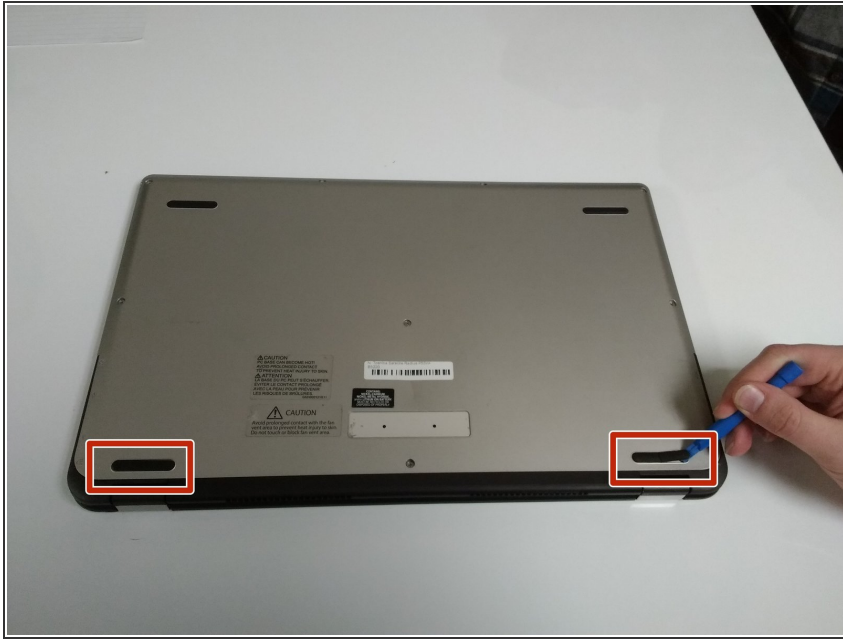
TOOLS:

- [iFixit Opening Tools](#) (1)
- [Phillips #0 Screwdriver](#) (1)

PARTS:

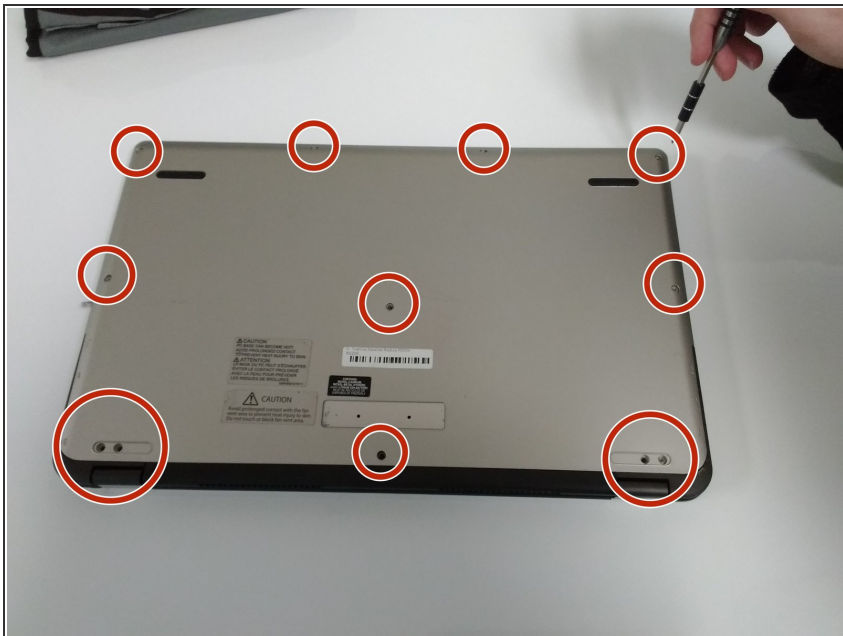
- [250 GB SSD](#) (1)
-

Step 1 — Hard Drive



- ⓘ Turn off the laptop before starting
- Remove the two rubber feet closest to the hinge with a plastic opening tool

Step 2



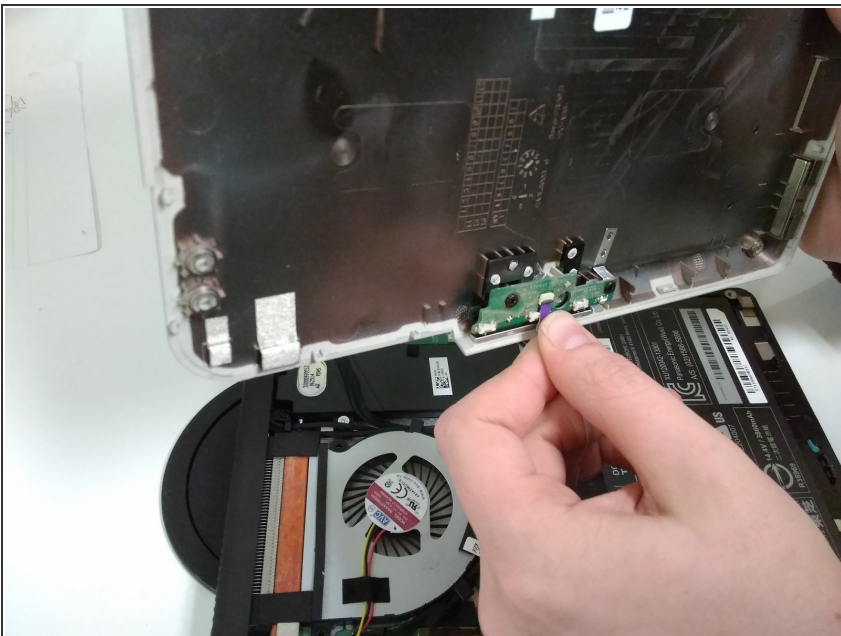
- Remove the twelve M2x4mm PH0 Philips head screws.

Step 3



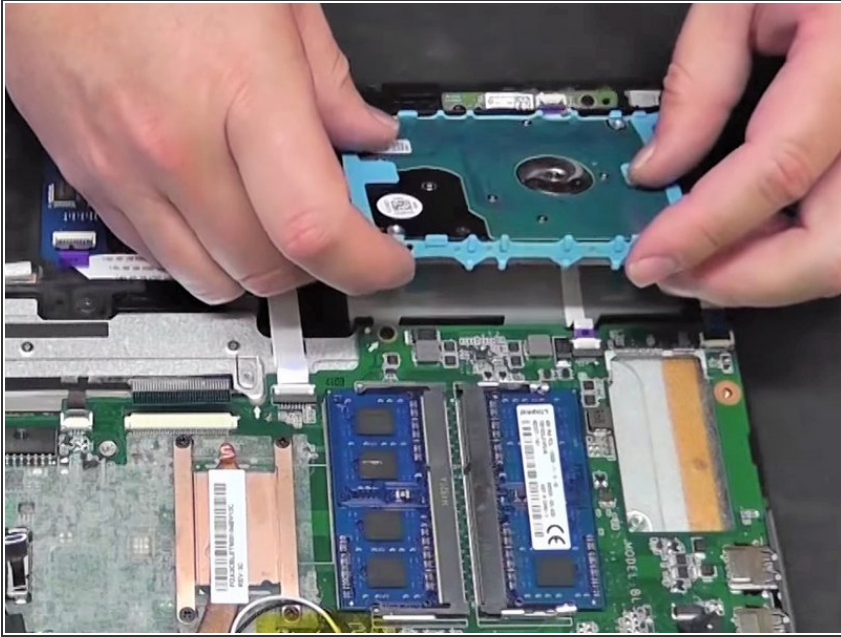
- Loosen the back cover with a opening tool.
- ⓘ The least damaging way to pry the cover is to start from corner and run the spudger along the edge.
- ⚠ Do not crack or bend the cover.

Step 4



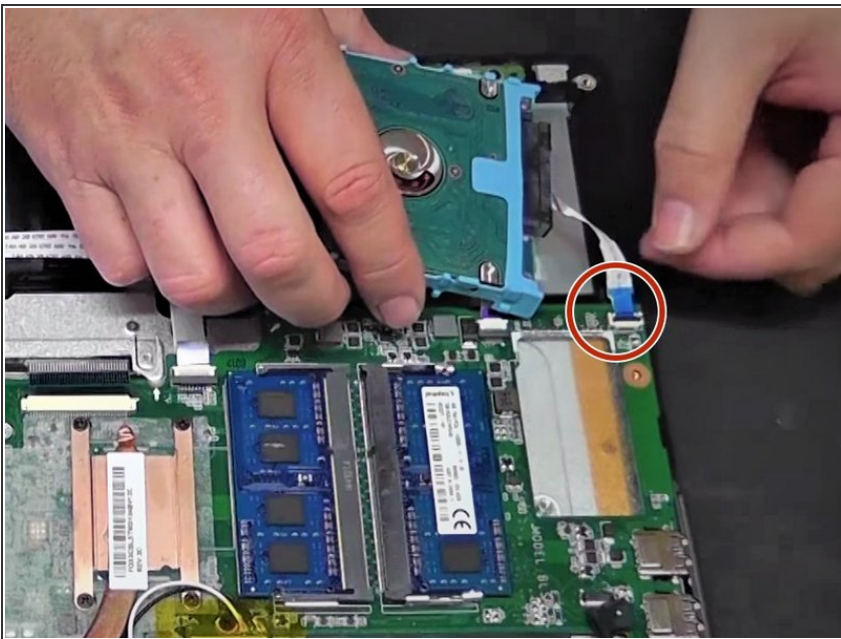
- Carefully lift open the cover.
- Remove the attached purple ribbon cable underneath the cover.
- ⚠ Do not rip the ribbon cable.

Step 5



- Gently lift up the hard drive

Step 6



- Gently lift up the black tab attached to the strip
- ⚠ Do not rip the ribbon cable.

To reassemble your device, follow these instructions in reverse order.