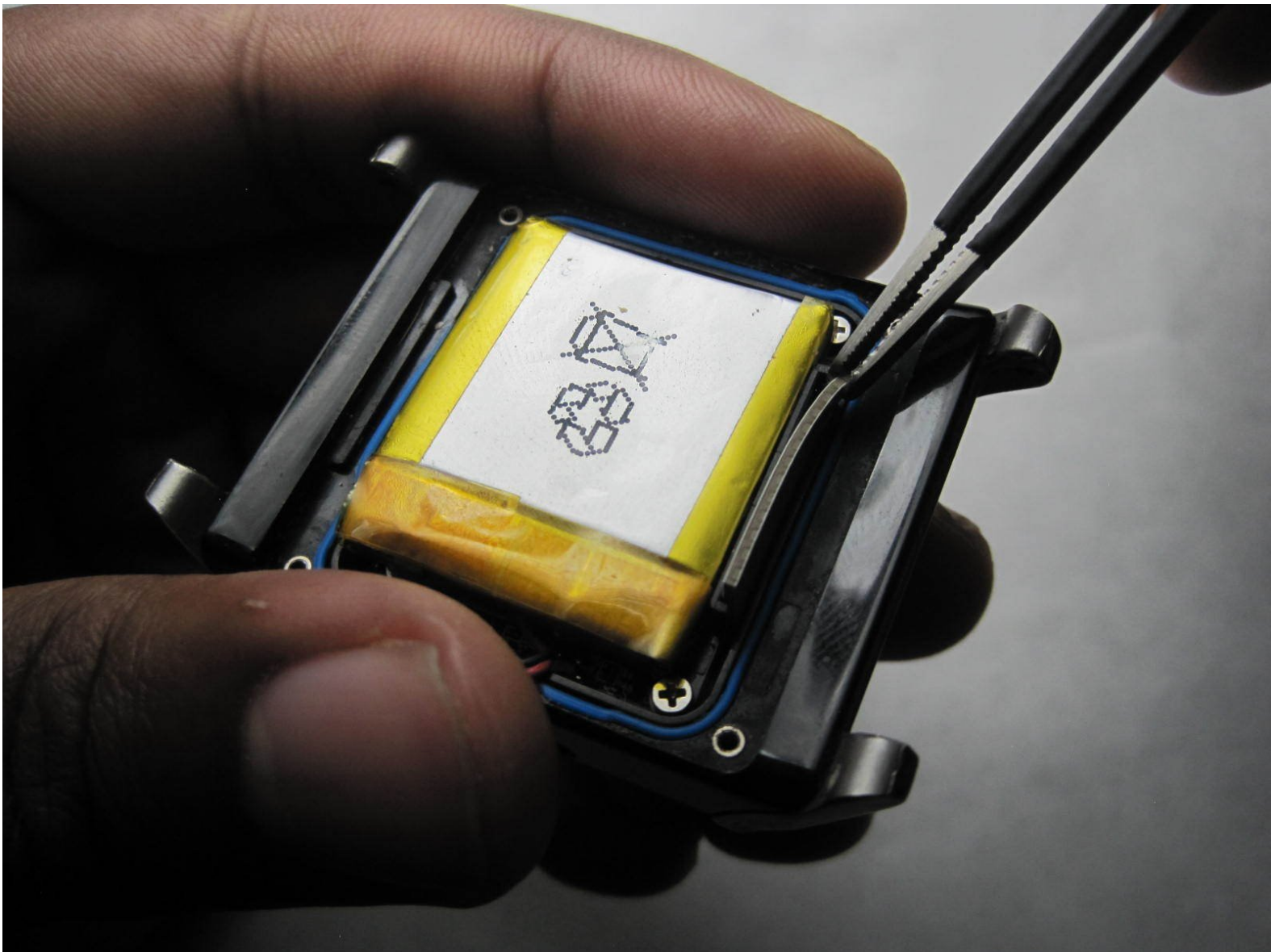




Basis B1 Band Battery Replacement

This guide shows how to replace the battery on the Basis B1 Band.

Written By: Kaitlyn Lee



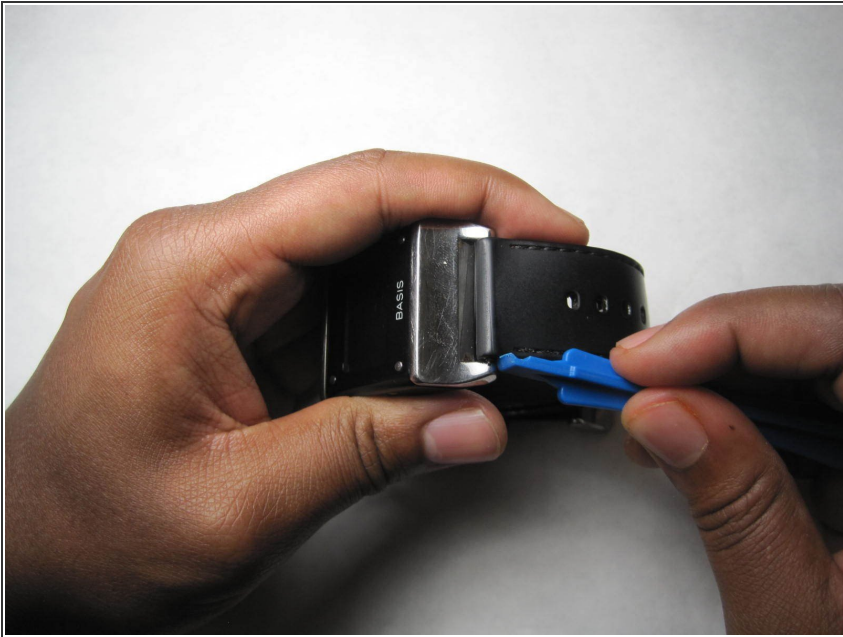
INTRODUCTION

The battery can go bad on many devices. This guide includes removing the back plate and then detaching the battery from the rest of the watch.

TOOLS:

- [Phillips #000 Screwdriver](#) (1)
 - [iFixit Opening Tools](#) (1)
 - [Tweezers](#) (1)
 - [Spudger](#) (1)
-

Step 1 — Watch Strap



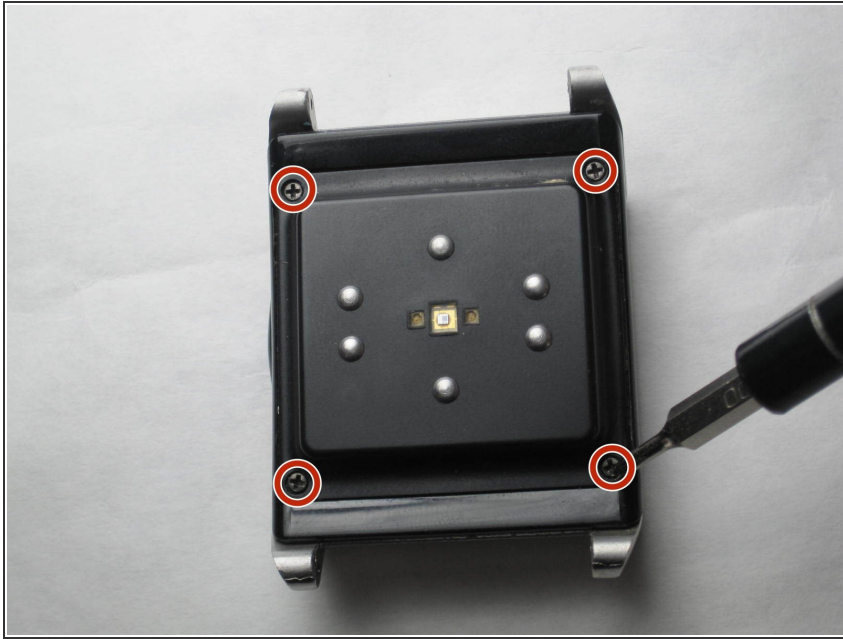
- Wedge a plastic opening tool between band contacts.

Step 2



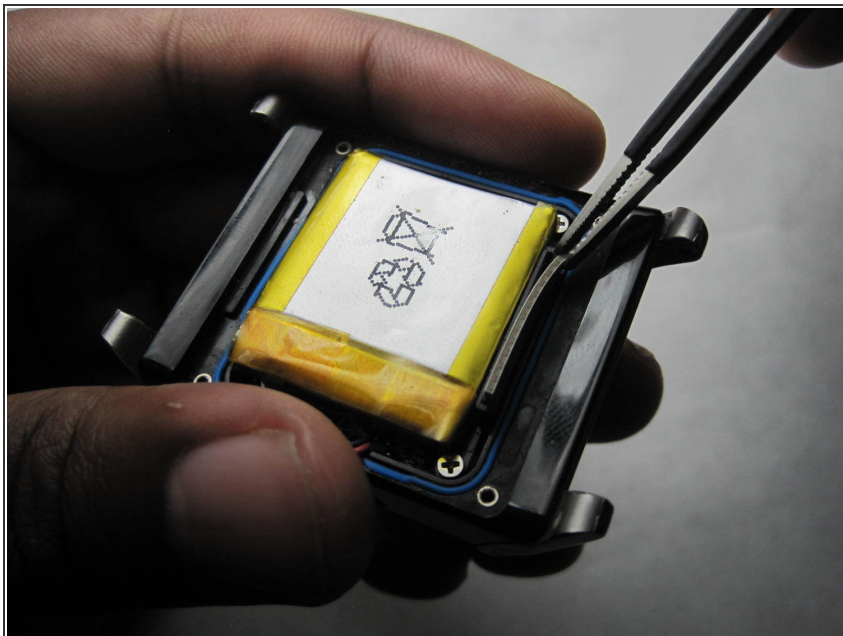
- Push in plastic opening tool until the components click and pop out of the holder.
- Repeat steps for other band.

Step 3 — Back Plate



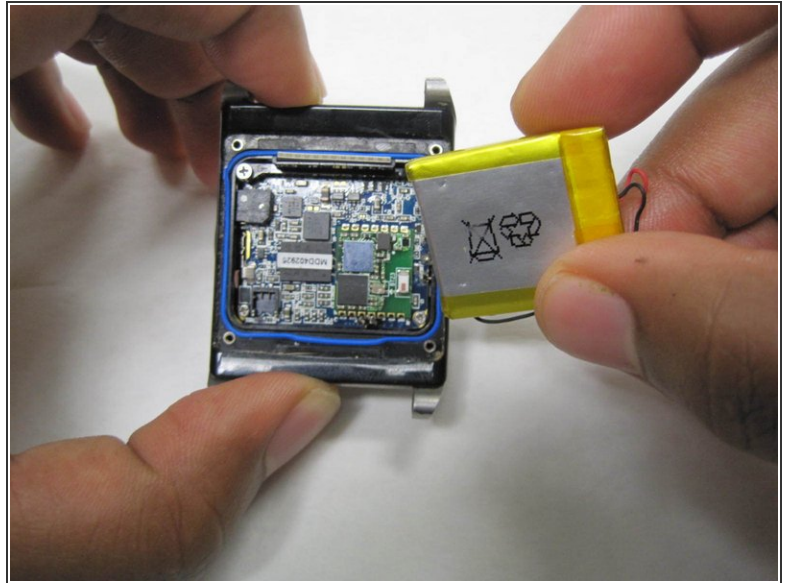
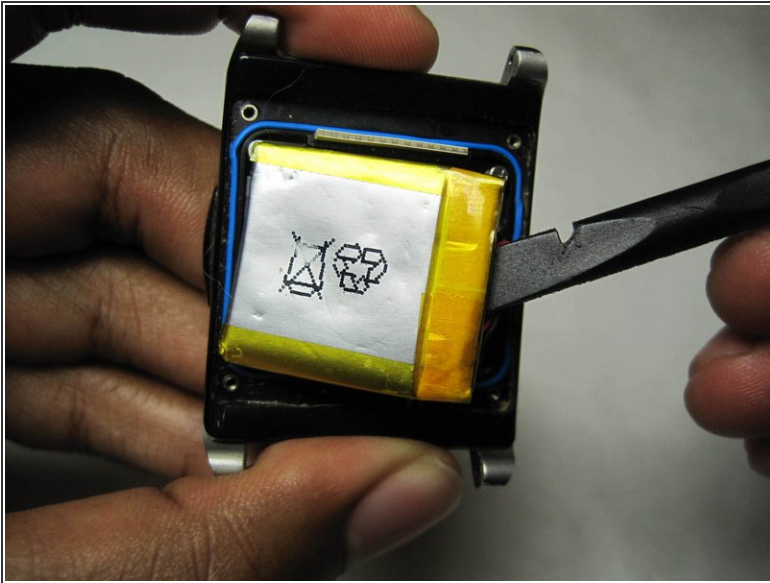
- Remove four 4mm screws using a PH000 screwdriver.
- Remove back plate.

Step 4 — Battery



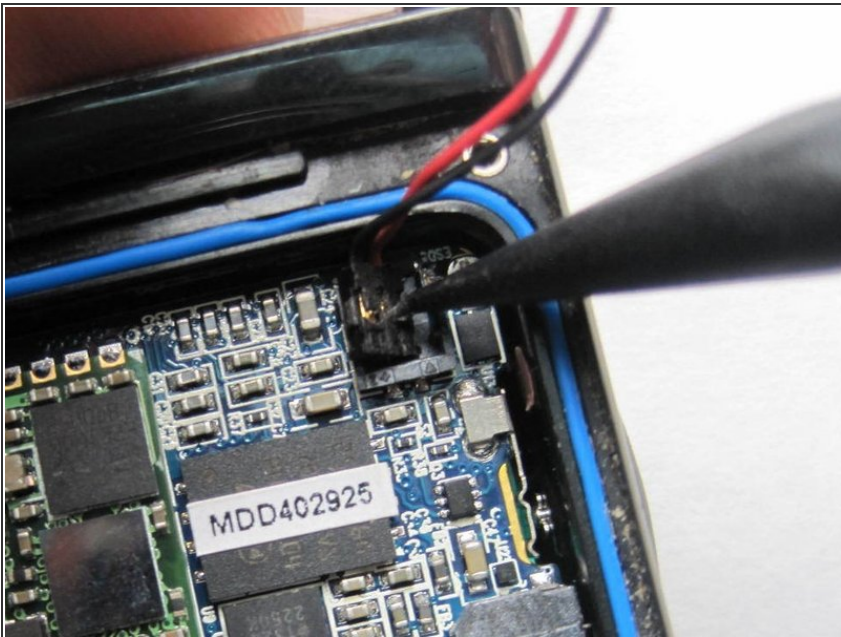
- Use tweezers to remove elastomeric, or zebra, connector.

Step 5



- Use the flat end of the spudger to carefully lift the battery until adhesive seal is broken.

Step 6



- Use the pointy edge of the spudger tool to detach battery leads from the circuit board.

To reassemble your device, follow these instructions in reverse order.