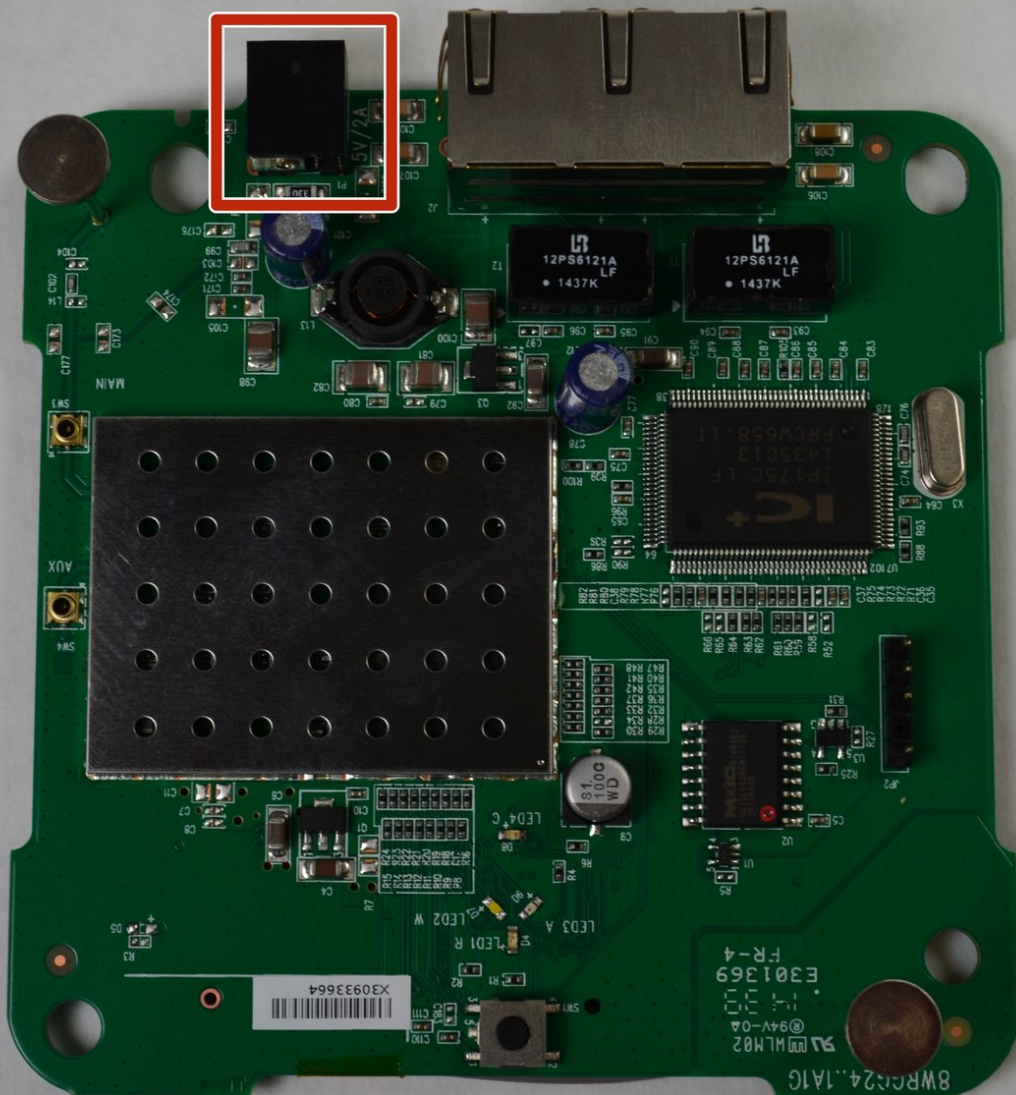




Sonos Bridge Power Port Replacement

This is a guide to replace a malfunctioning Power Port in a Sonos Bridge. It is of moderate difficulty, requiring soldering.

Written By: Brian Strader



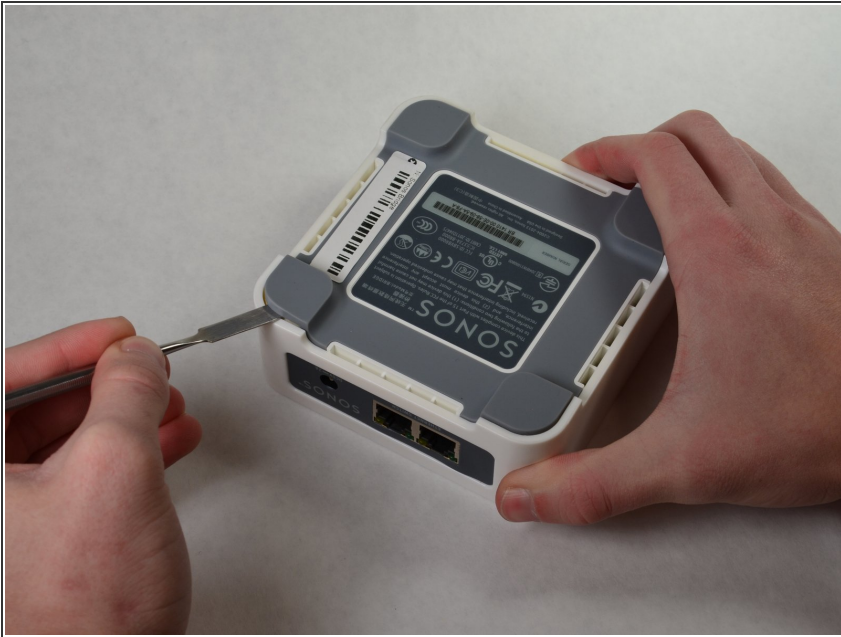
INTRODUCTION

This repair should be fairly simple given the correct tools and experience soldering. If you do not have any soldering experience, it is recommended to practice prior to attempting to replace any parts in the Sonos Bridge. Taking apart the Bridge is quick and should not do any permanent damage to the device. This repair might be necessary if the device does not power on correctly or requires special manipulation of the power cable to have consistent power. If the power cable feels loose in the port, the port may need replacing.

TOOLS:

- [Soldering Iron](#) (1)
 - [Metal Spudger](#) (1)
 - [Phillips #1 Screwdriver](#) (1)
-

Step 1 — Power Port




- The rubber bottom is glued on, meaning it can be easily pried off using the metal spudger.
- You may have to pry from multiple locations.

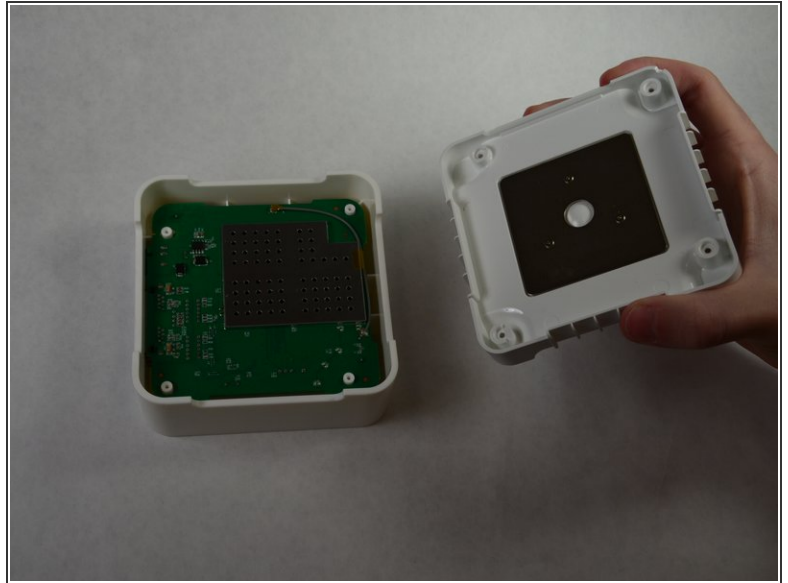
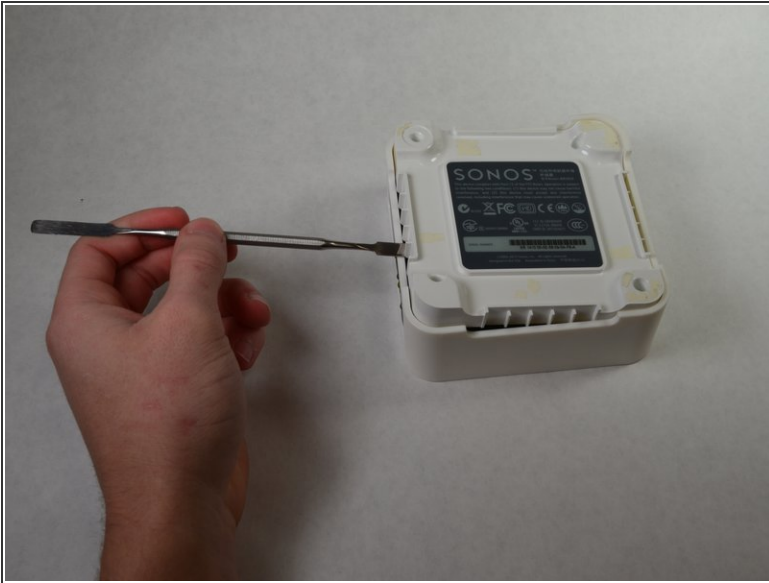
Step 2



- There is one screw in each corner of the base for a total of four screws.
- Remove each screw using the Phillips 1 screwdriver.
- The four screws are each 0.9 cm long.

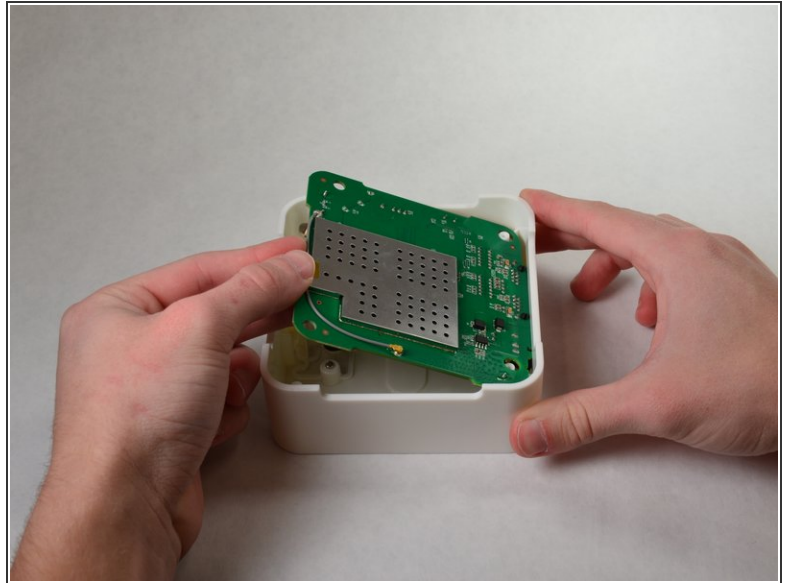
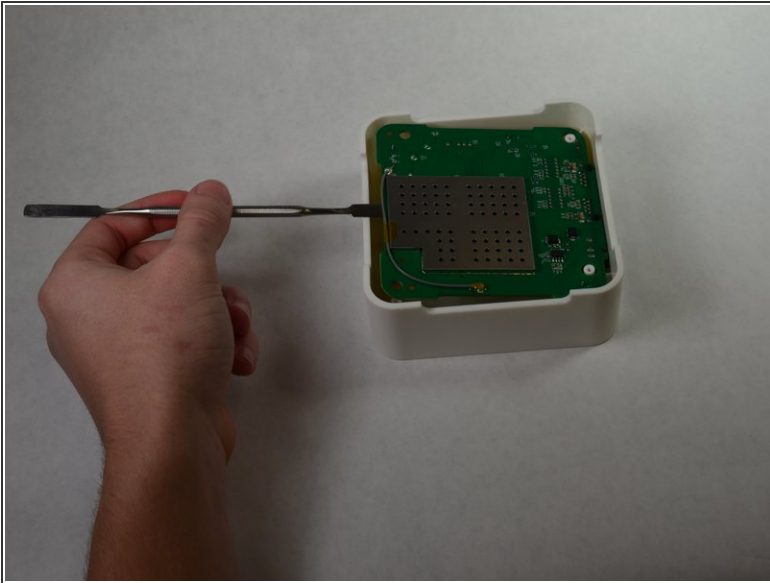
 The screws are small, so be careful to not lose them.

Step 3



- Use the metal spudger to pry out the plastic bottom.
- ⓘ Alternatively, the casing can be lightly tapped on a table (base down) to drop the bottom out of the casing.

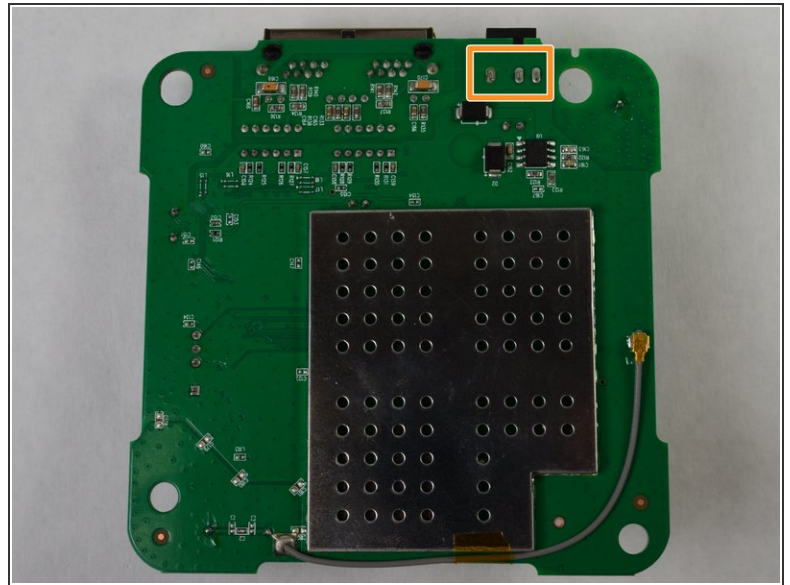
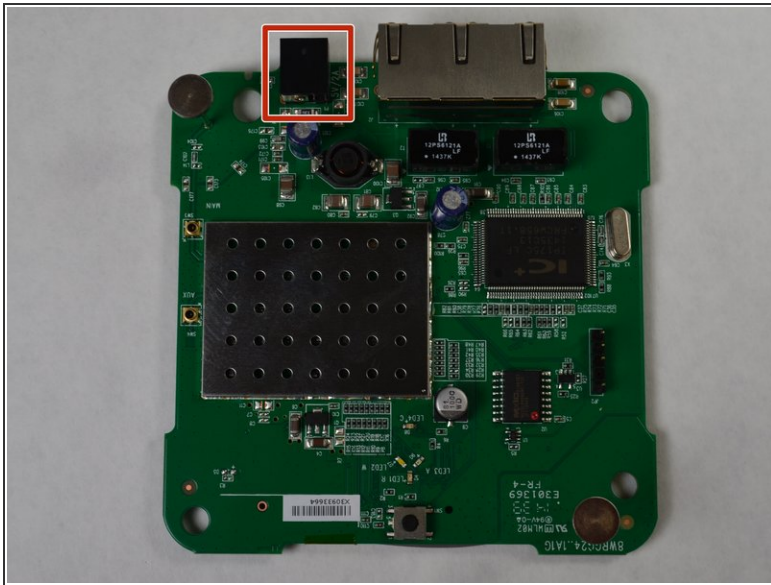
Step 4



- Pry out the circuit board.
- Place the metal spudger under the board on the side opposite the two ports.
- The board can then be easily wiggled out of the casing.

 This should NOT require significant force.

Step 5



- Locate the Power port on the circuit board, shown with the red box in the first image.
- Locate the solders attached to the Power port.
- Use the soldering iron to undo the solders.

To reassemble your device, follow these instructions in reverse order.