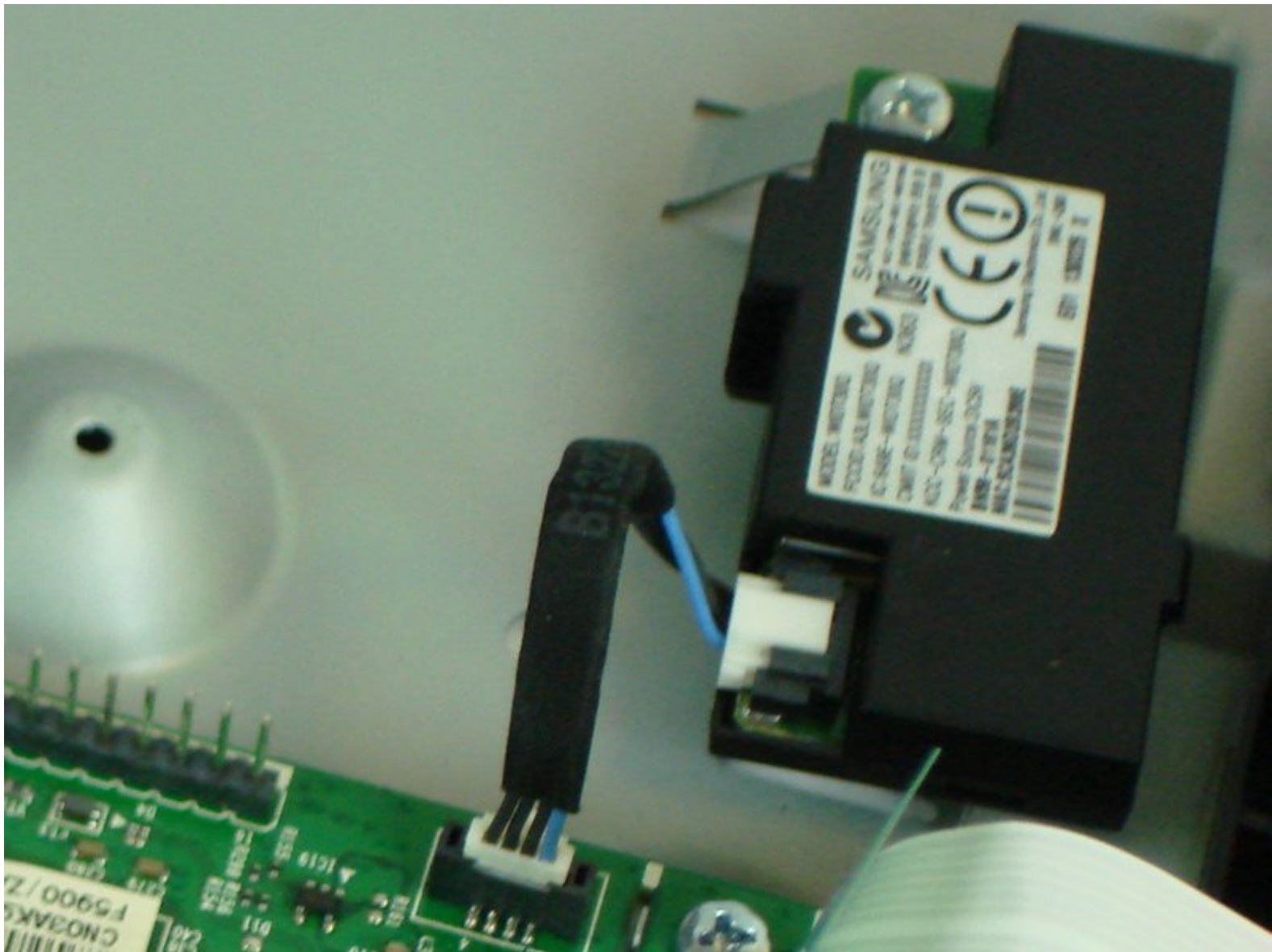




# Samsung BD-F5900 WiFi Module Replacement

This guide explains how to replace the WiFi module on the Samsung BD-F5900 Blu-ray player

Written By: Louis McKean



---

## INTRODUCTION

If there are any issues connecting to the WiFi with the device that can not seem to fixed, this simple guide explains how to replace the module. The only tool required is a #1 Phillips head screwdriver.

---

### TOOLS:

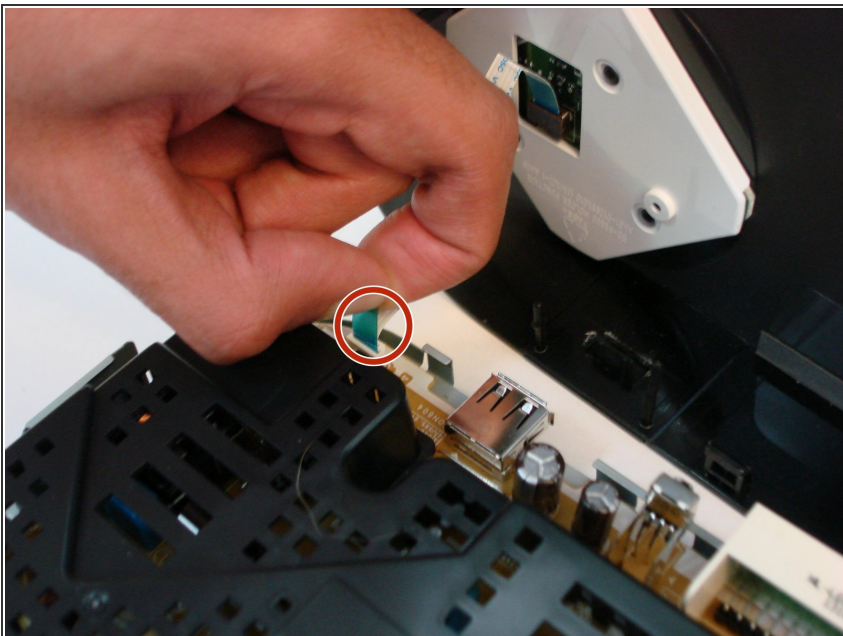
- [Phillips #1 Screwdriver](#) (1)
-

## Step 1 — Top Cover



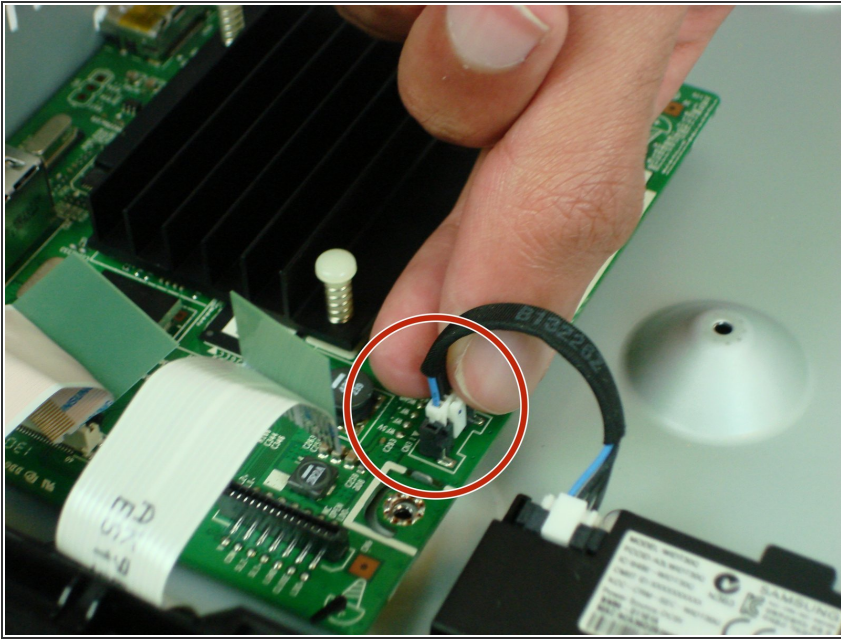
- Using a #1 Phillips head screwdriver, remove the three 10mm screws on the back panel.
- Tilt the back of the top cover forward to remove from chassis.

## Step 2



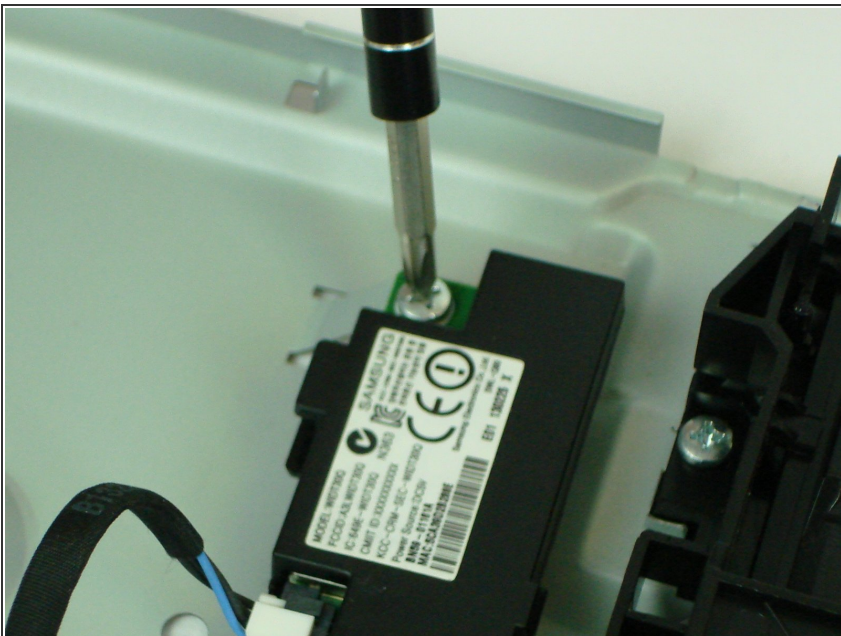
- Gently pull up on the ribbon cable by the blue tab to remove it from the power supply board.

### Step 3 — WiFi Module



- Disconnect the WiFi board cable connector from the main logic board

### Step 4



- Using a #1 Phillips head screwdriver, remove the 7.5 mm screw.
- Slightly tilt the WiFi module sideways to remove from chassis.

To reassemble your device, follow these instructions in reverse order.