



Amazon Echo Dot 2nd Generation 4-in-1 WiFi/Bluetooth/FM/GPS Replacement

Replace the 4-in-1 Wifi/Bluetooth/FM/GPS component of the Amazon Echo Dot 2nd Generation.

Written By: Alexis White



INTRODUCTION

Use this guide to replace the 4-in-1 WiFi/Bluetooth/FM/GPS board on the Amazon Echo Dot 2nd generation. The 4-in-1 is located on the motherboard, so the whole board must be replaced, rather than replacing each individual component.

TOOLS:

- [T8 Torx Screwdriver](#) (1)
 - [Metal Spudger](#) (1)
 - [iFixit Opening Tools](#) (1)
-

Step 1 — 4-in-1 WiFi/Bluetooth/FM/GPS



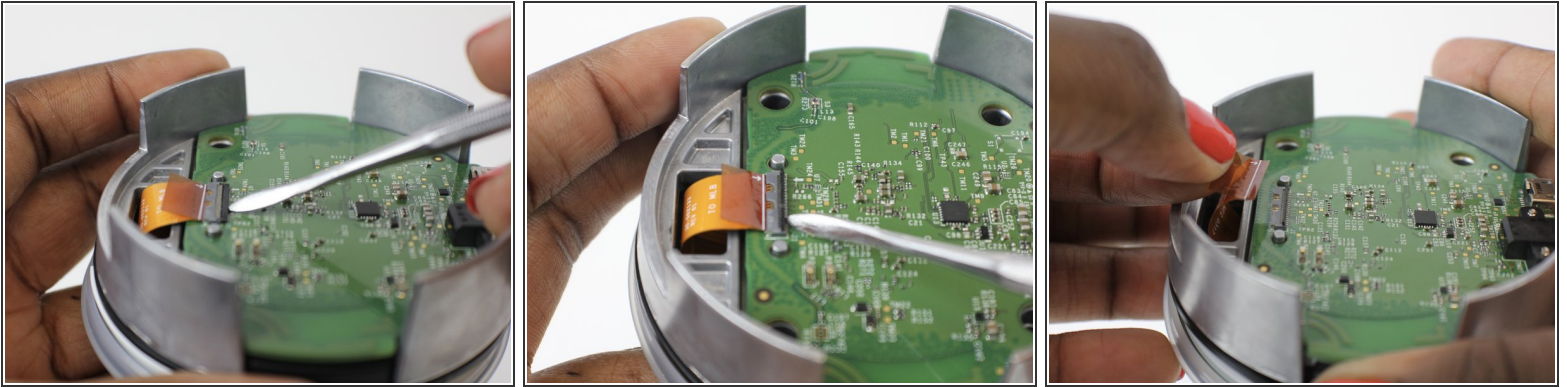
- Power off and unplug the echo
- Using the plastic opening tool, peel off the rubber layer on the bottom of the echo

Step 2



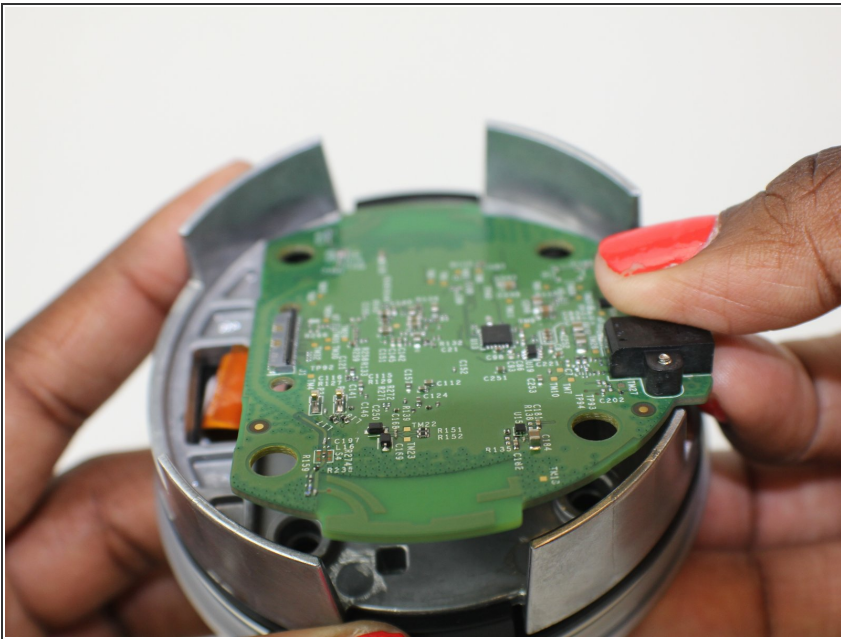
- Use a T8 screwdriver bit to unscrew the four 1.6mm torx screws
- Remove the black cylindrical base

Step 3



- Use the metal spudger to lift the ZIF connector
- Remove the ribbon cable from the slot

Step 4



- Remove the motherboard

To reassemble your device, follow these instructions in reverse order.