



# Wahl Professional Designer Power Switch Replacement

This guide will enable you to replace the power switch on your device.

Written By: Sophia Swearengin



## INTRODUCTION

Use this guide to replace the power switch on your device.

---

### TOOLS:

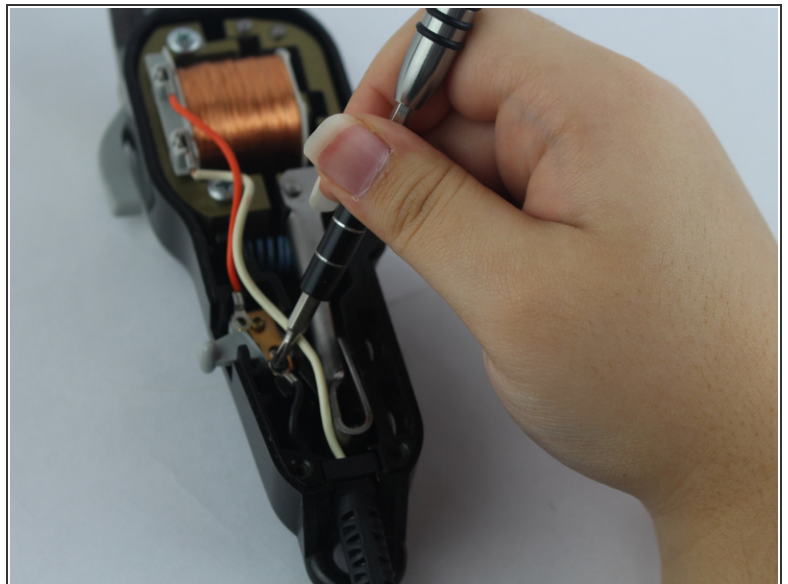
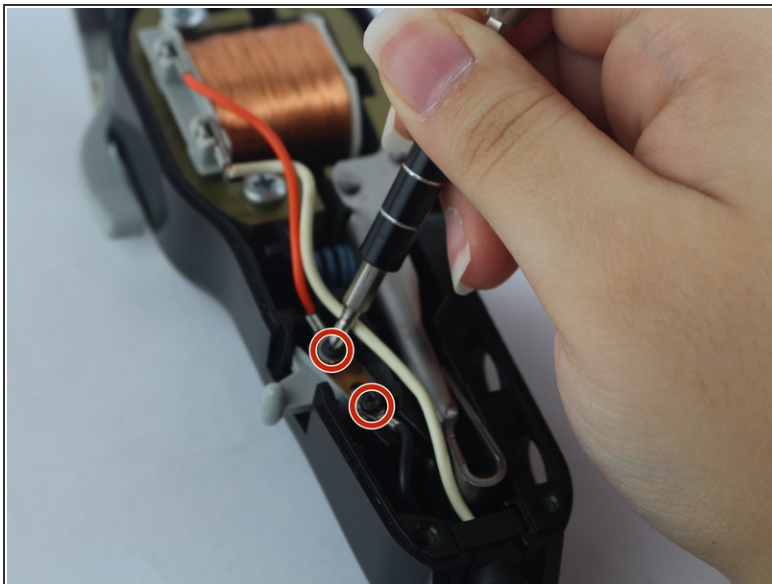
- [Phillips #0 Screwdriver](#) (1)
  - [Phillips #1 Screwdriver](#) (1)
-

## Step 1 — Power Switch



- Unscrew the 12 mm Phillips head screws located at the top of the cover and at the bottom two corners, using a Phillips #1 Screwdriver.

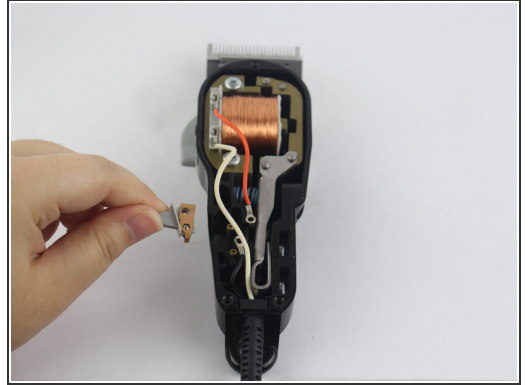
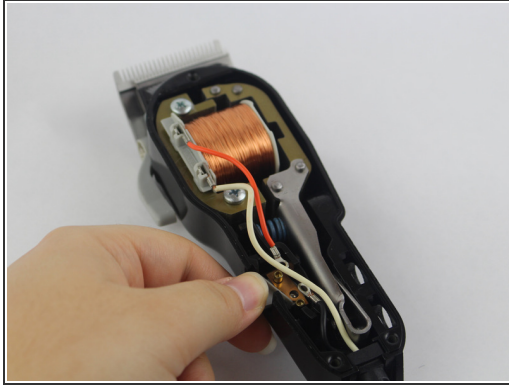
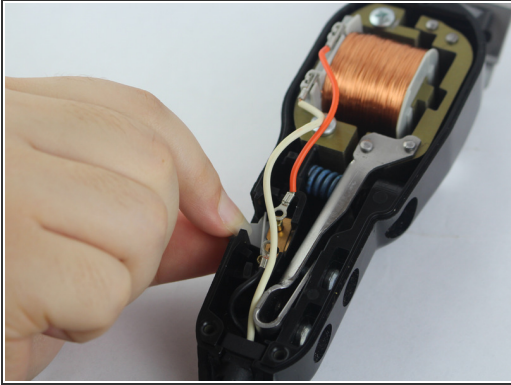
## Step 2



- Unscrew the two black 5.556 mm Phillip head screw on the power switch with a Phillips #0 Screwdriver.



### Step 3



- Shimmy the power switch off the mount until it is completely removed.

To reassemble your device, follow these instructions in reverse order.

This document was last generated on 2017-12-22 11:42:33 PM.