



# Wahl Professional Designer Blade Adjustment Lever Replacement

This guide will show you how to properly replace the blade adjustment level on the Wahl Professional Designer.

Written By: Sophia Swearengin



## INTRODUCTION

Use this guide to replace the blade adjustment lever on your device.

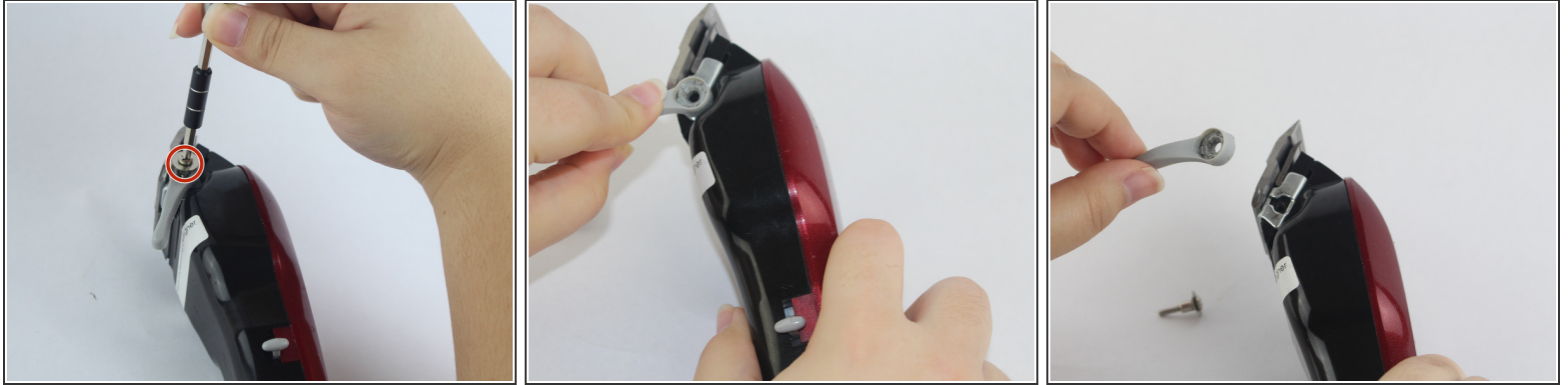
---



### TOOLS:

- [Phillips #1 Screwdriver](#) (1)
-

## Step 1 — Blade Adjustment Lever



- Unscrew the 12 mm Phillip head screw located on the blade adjustment lever using a Phillip's #1 screwdriver. Remove screw from groove to release lever.

To reassemble your device, follow these instructions in reverse order.

This document was last generated on 2017-12-18 10:43:22 AM.