



Philips Sonicare Diamond Clean Case Replacement

Use this guide to replace or remove the case of the Philips Sonicare DiamondClean toothbrush.

Written By: Zachary Bertrand



INTRODUCTION

This guide will show you how to remove the casing from your Philips Sonicare DiamondClean toothbrush.

TOOLS:

- [Spudger](#) (1)
-

Step 1 — Case Replacement



- Pull the head from toothbrush.

Step 2



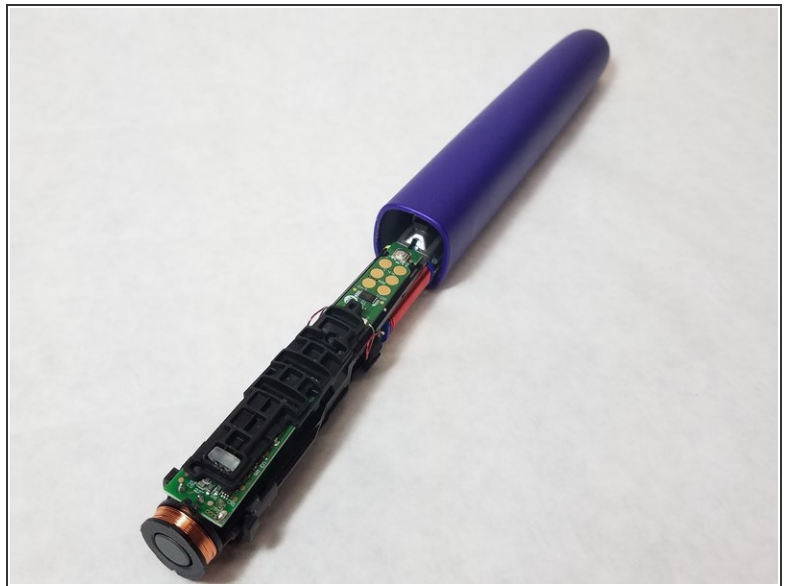
- Use a nylon spudger to pry the chrome cap at the bottom off.

Step 3



- Use a nylon spudger to release the black tabs on either side of internals.

Step 4



- Put the metal head on a solid surface with handle perpendicular to the surface. Firmly, yet gently, push down until the internals start to slide out.

To reassemble your device, follow these instructions in reverse order.

This document was generated on 2020-11-21 05:34:56 AM (MST).

