



Philips Sonicare HX6710 Battery Replacement

Replacing the battery in the electric toothbrush Philips Sonicare HX6710

Written By: Michael S.



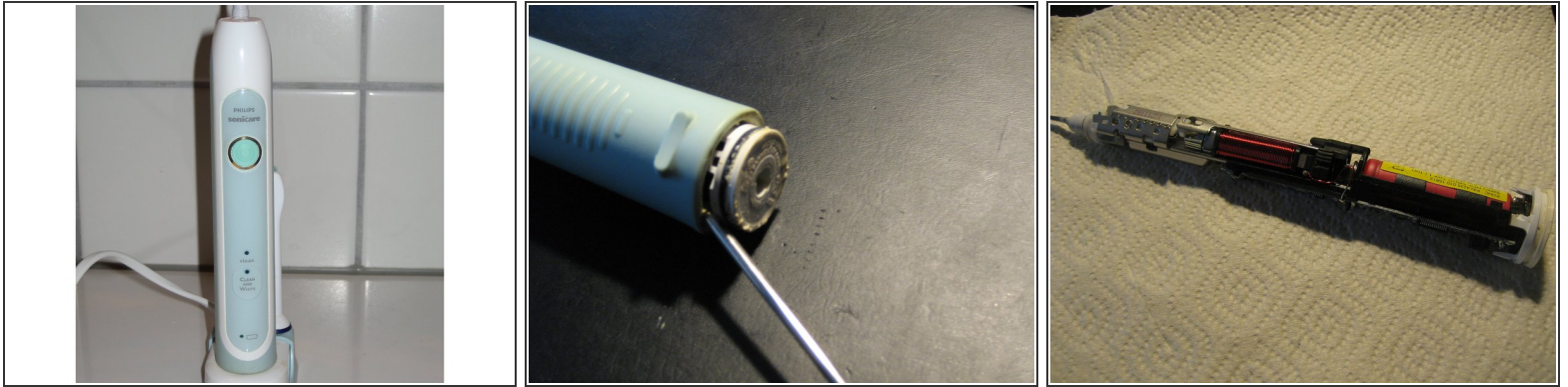
**TOOLS:**

- [Portable Soldering Iron](#) (1)
- [Flathead Screwdriver](#) (1)

**PARTS:**

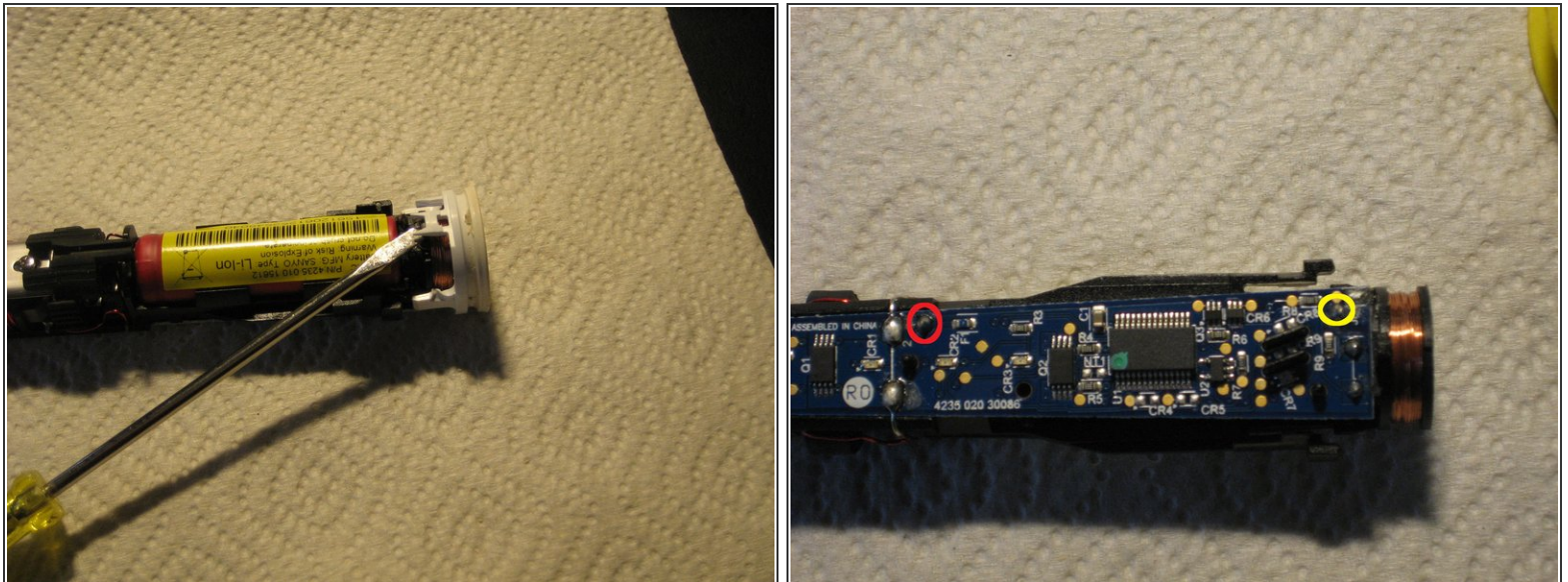
- [New Item](#) (1)

Step 1 — Open housing



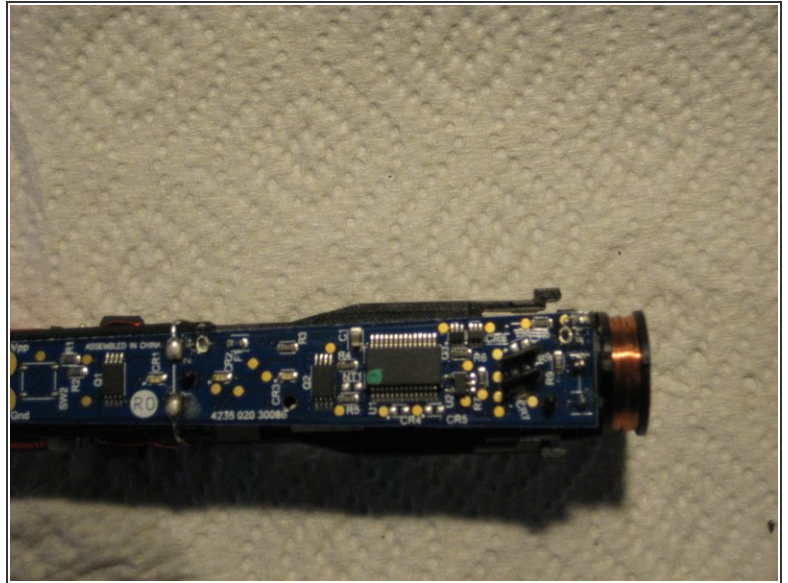
- Remove the brush.
- Using a thin screwdriver carefully pry open the bottom of the case.

Step 2 — Remove lower cap



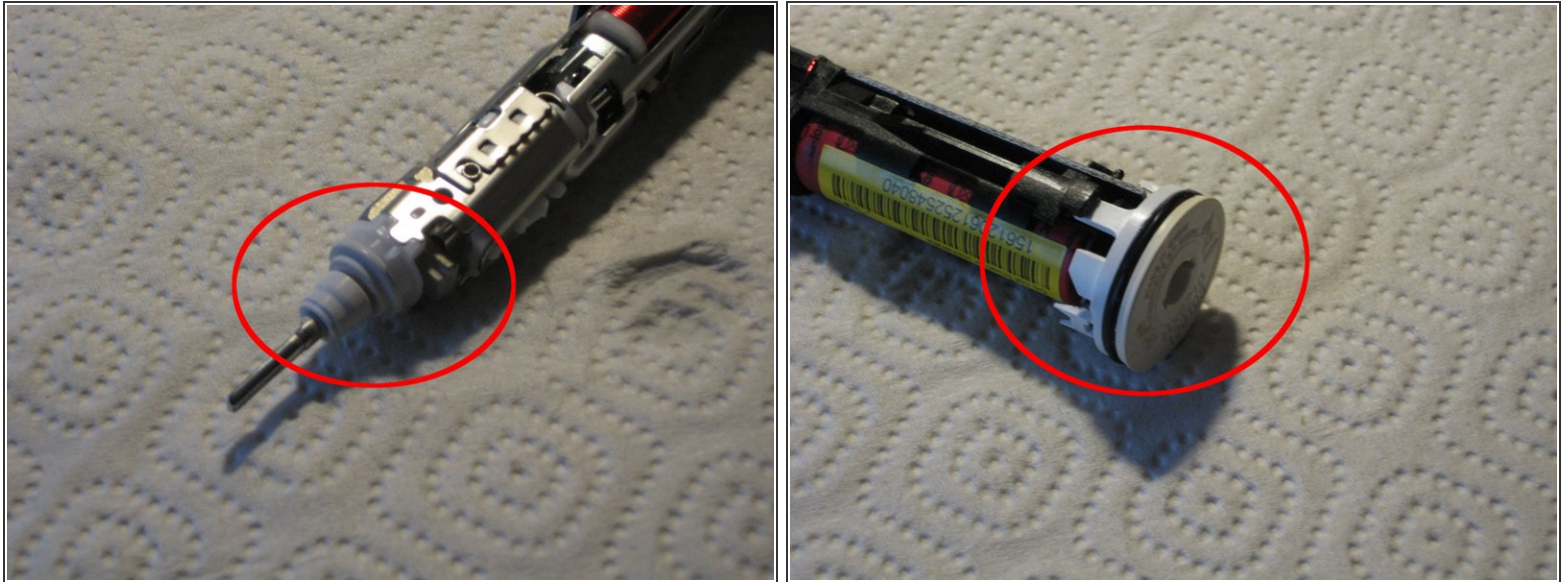
- Remove lower cap (2 plastic tabs). O-ring is already removed in the picture.
- Solder connections of the battery: + (red) and - (yellow).

Step 3 — Replace the battery



- Unwrap the battery and replace it (see Soldering Skills).
 - To avoid a short circuit (the battery will normally still have a remaining charge), start at the positive pole of the battery and unsolder completely from the board.
 - Continue with the negative pole.
 - At the end, loosen the soldering pads from remaining solder, so that the contacts of the new battery can be inserted into the board.
 - Solder plus and minus pole.
- Requires a 3.7V battery, which is approximately 14mm x 49mm (similar to AA).

Step 4 — controls



- Before assembly, check the upper seal and the lower O-ring and replace if necessary.

Repeat the steps in order to reassemble your device.