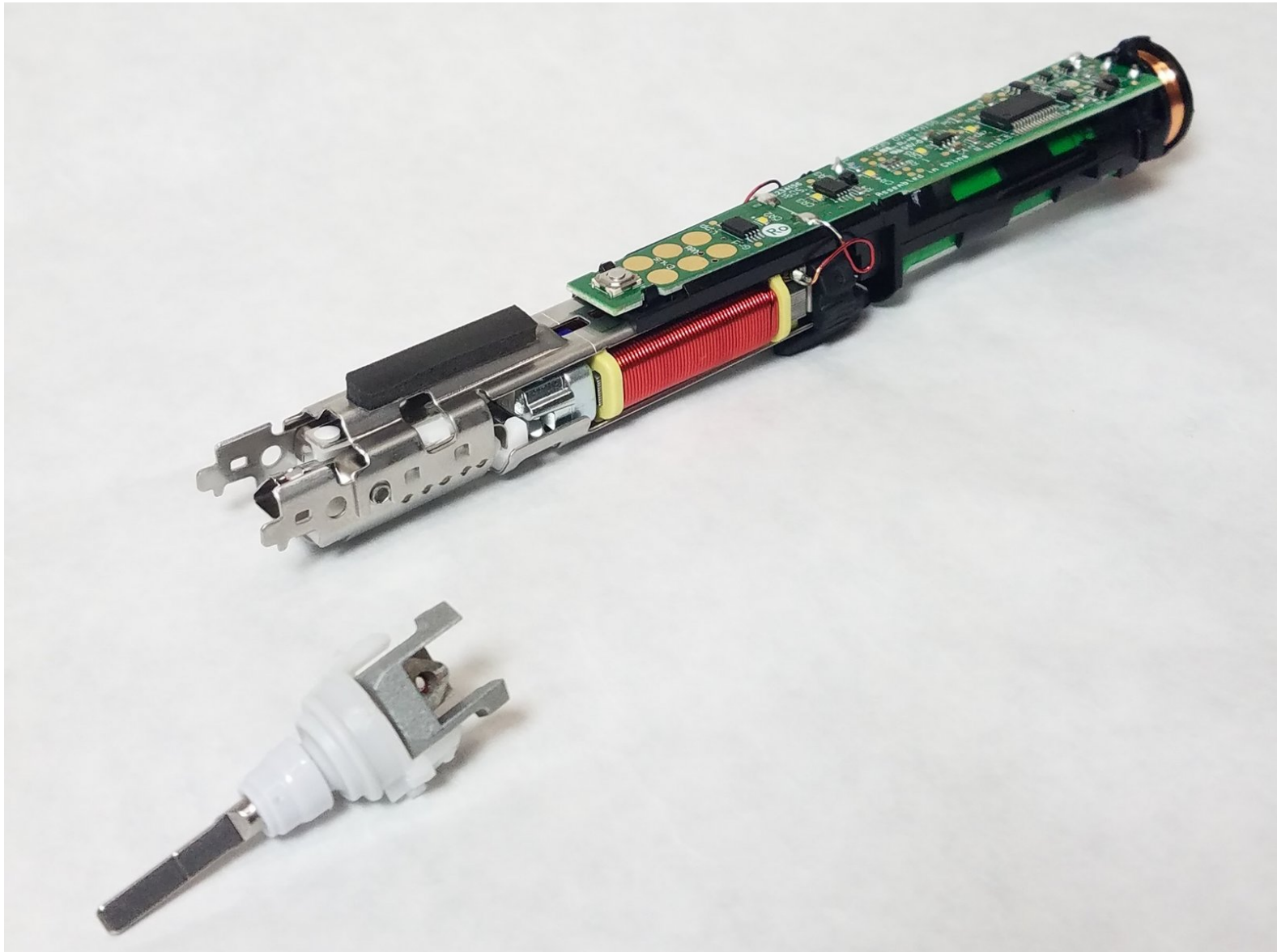




Philips Sonicare DiamondClean Metal Brush Connector Replacement

This guide will show you how to replace the metal piece connecting the handle to the brush head.

Written By: Zachary Bertrand



**TOOLS:**

- [Spudger](#) (1)
- [Phillips #00 Screwdriver](#) (1)
- [Tweezers](#) (1)

**PARTS:**

- [10mm screw](#) (1)

Step 1 — Case Replacement



- Pull the head from toothbrush.

Step 2



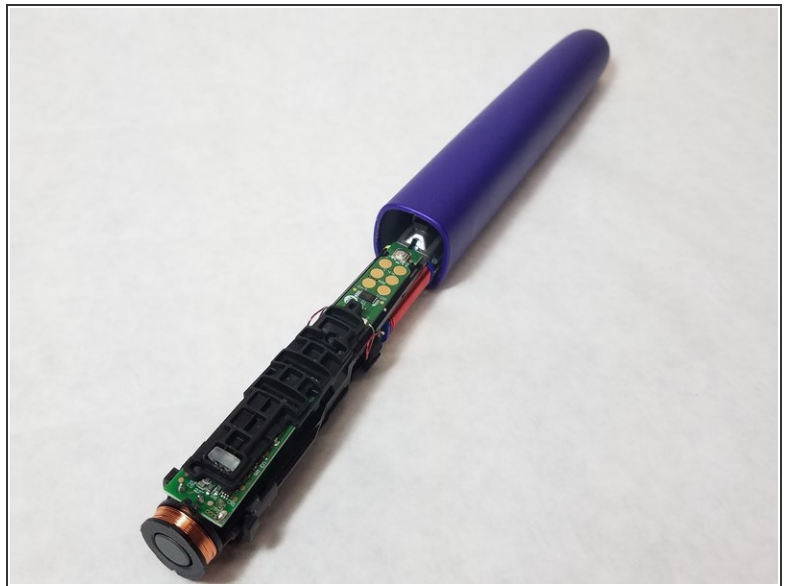
- Use a nylon spudger to pry the chrome cap at the bottom off.

Step 3



- Use a nylon spudger to release the black tabs on either side of internals.

Step 4



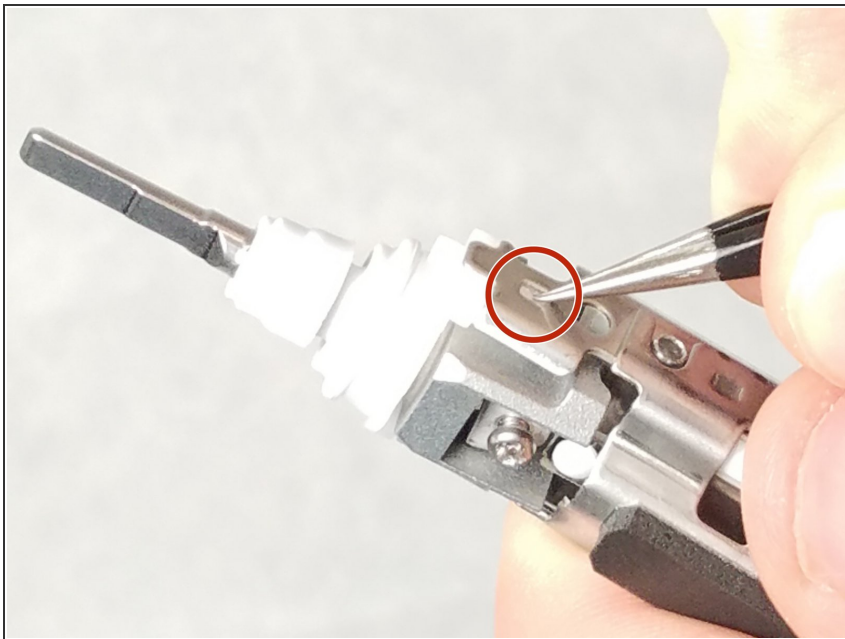
- Put the metal head on a solid surface with handle perpendicular to the surface. Firmly, yet gently, push down until the internals start to slide out.

Step 5 — Metal Brush Connector Replacement



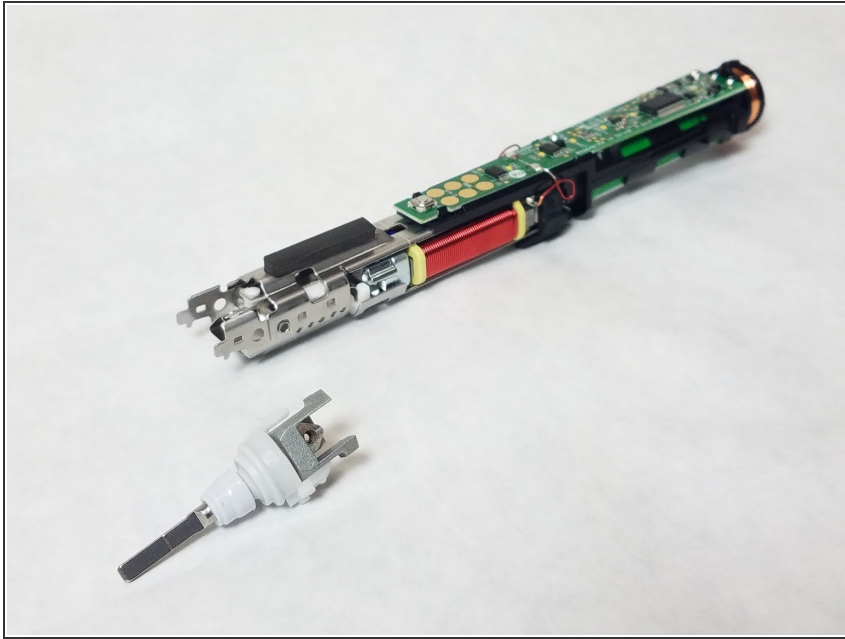
- Use a Phillips screwdriver to remove the screw at the base of the metal head.

Step 6



- Use fine tip tweezers to push the white plastic tabs in to release the head from the innards.

Step 7



- Gently pull the metal head from the innards.

To reassemble your device, follow these instructions in reverse order.