



# Samsung PL20 LCD Replacement

This camera had a few problems, but I started off by replacing the broken LCD. This is a nice camera to work on; it was a straight forward task to complete.

Written By: oldturkey03



## INTRODUCTION

Here is a PL20 that has a broken LCD, as well as some other issues. The repair is straight forward. The only tools used were a Phillips screwdriver and a plastic opening tool, which is optional. This camera was actually fun to work on; it was easy and took no time at all.



### TOOLS:

- [Phillips #00 Screwdriver](#) (1)
- [iFixit Opening Tools](#) (1)



### PARTS:

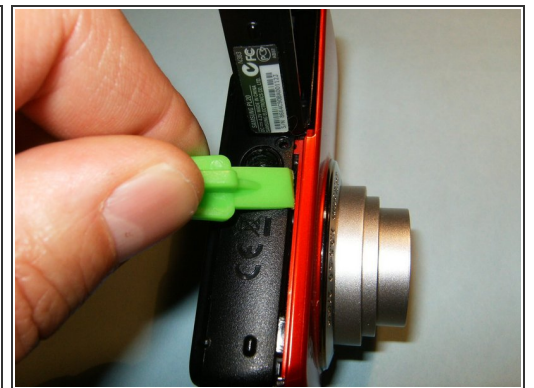
- [Replacement LCD](#) (1)

## Step 1 — LCD



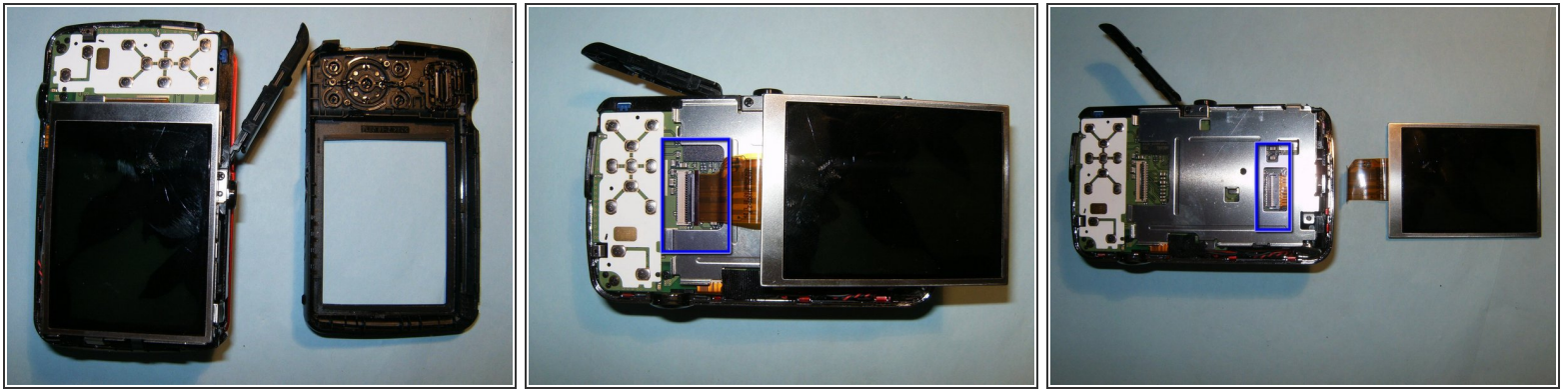
- Here is the broken LCD. The spider crack in the glass, as well as the discoloration of the screen, is clearly visible.
- Remove the battery and the memory card from the device, if so equipped.
- Remove the two screws on the left side.

## Step 2



- Remove one screw from the bottom
- Remove the two screws on the right side.
- Use a plastic opening tool, or your fingernails, to split the casing apart. Start from the battery compartment and work your way around the case. The case should split easily.

## Step 3



- Once the back of the case is removed, the LCD becomes immediately visible.
- Remove the LCD from its holder to gain access to the connector.
- Open the connector, and flip the black clip upwards, freeing the LCD. It can now be removed and the new one installed.

To reassemble your device, follow these instructions in reverse order.

This document was last generated on 2019-07-16 05:21:38 AM.