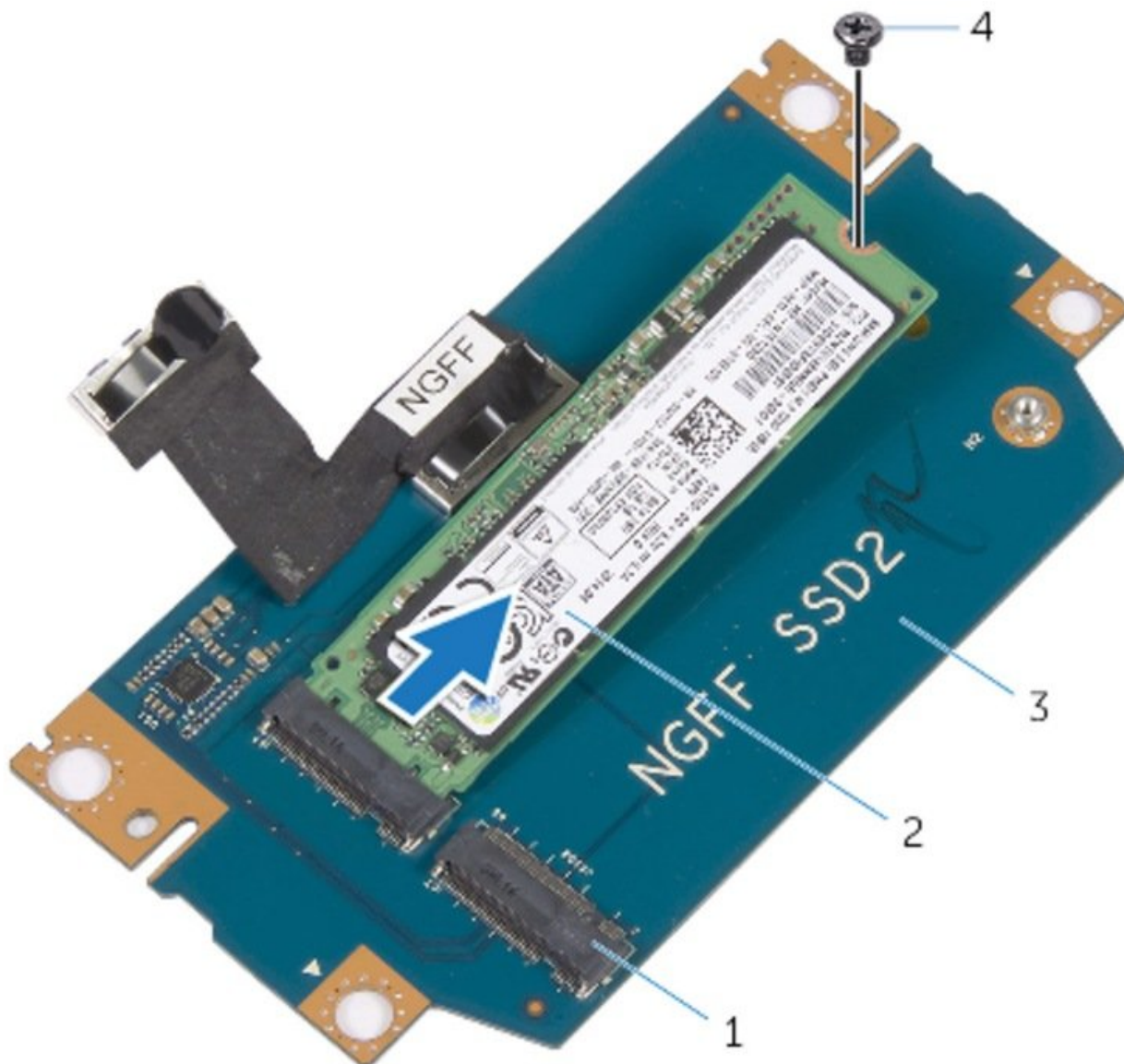




Dell Alienware 13 Solid-State Drive (SSD) Replacement

How to remove and replace the SSD.

Written By: Terrence15



INTRODUCTION

In this guide, we will be showing you how to remove and replace the Solid-State Drive.

TOOLS:

- [Pro Tech Toolkit](#) (1)
-

Step 1 — Caution



⚠ CAUTION: Solid-state drives are fragile. Exercise care when handling the hard drive.

⚠ CAUTION: To avoid data loss, do not remove the solid-state drive while the computer is in sleep or on state.

Step 2 — Pull Tab



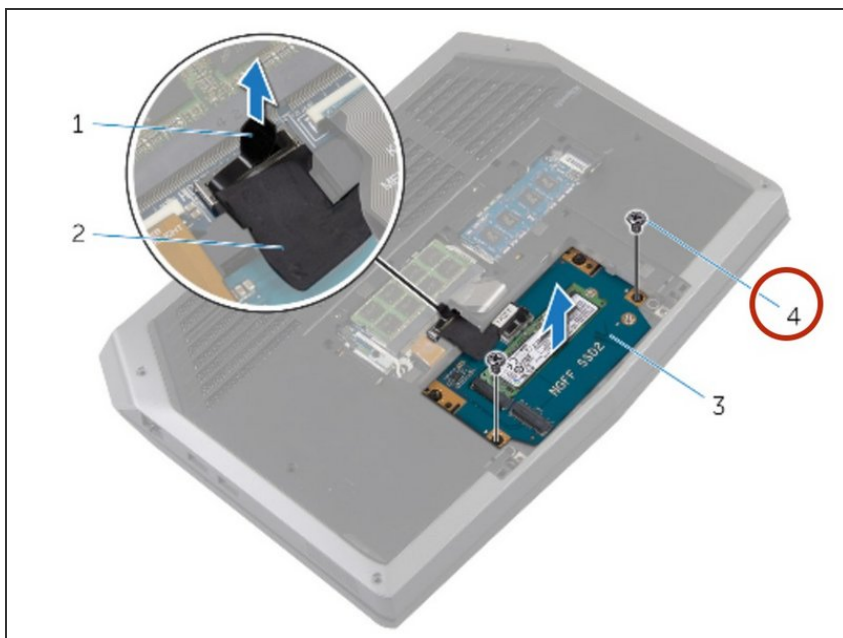
- Using the pull tab, pivot the solid-state drive bracket and peel off the bracket from the tabs on the computer base.

Step 3 — Disconnecting the State Drive



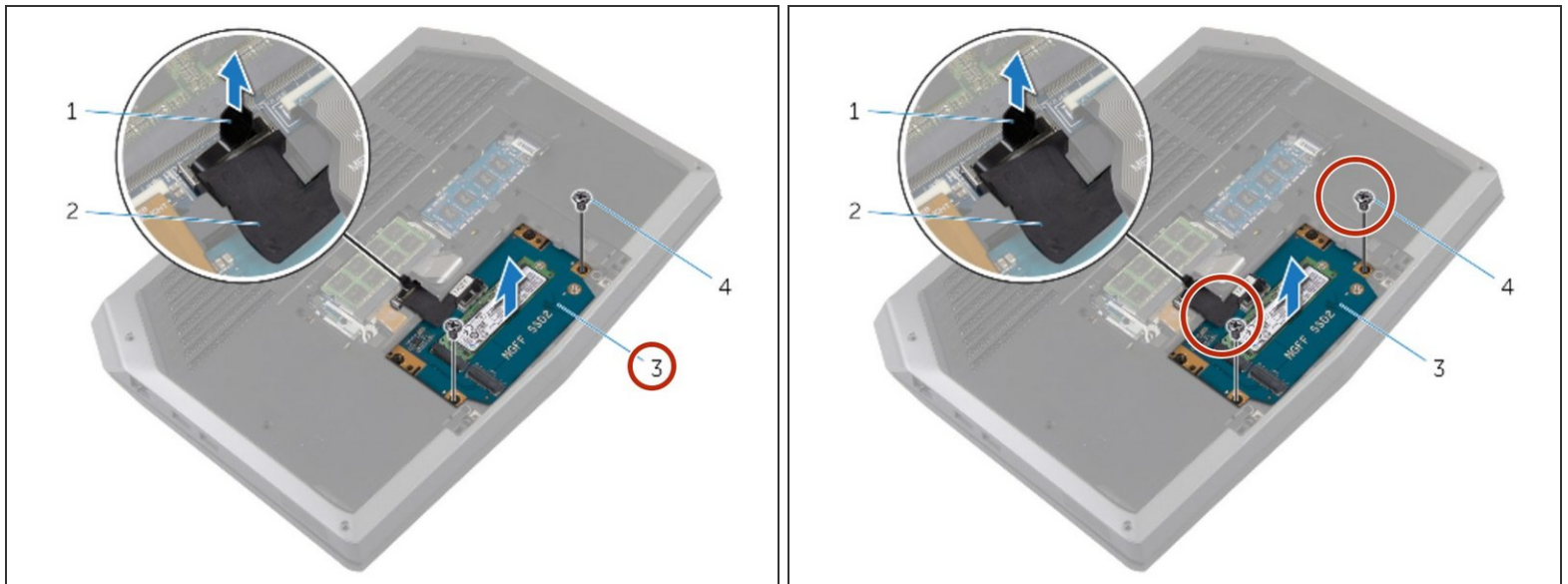
- Using the pull tab, disconnect the solid-state drive cable from the system board.

Step 4 — Remove Screws



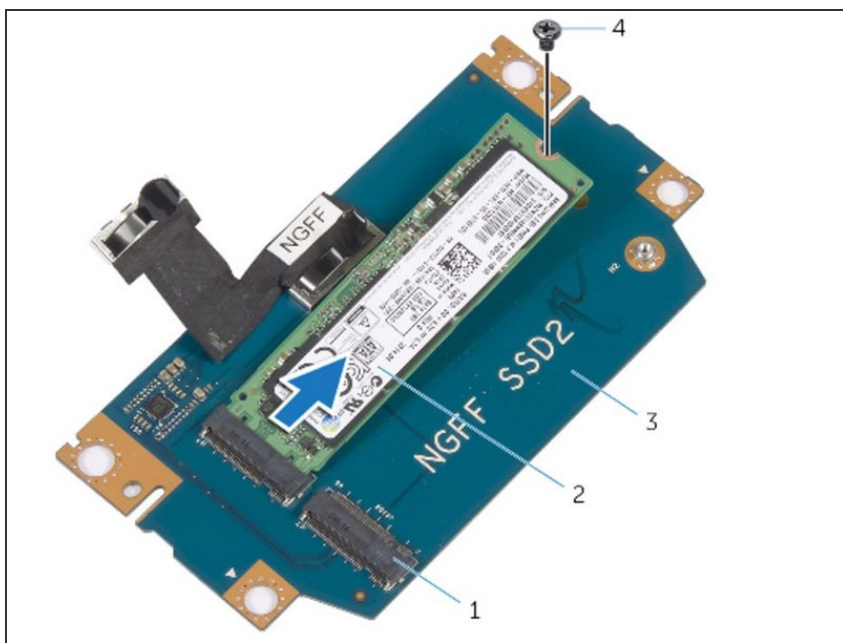
- Remove the screws that secure the solid-state drive assembly to the computer base.

Step 5 — Solid-State Drive Assembly Lift



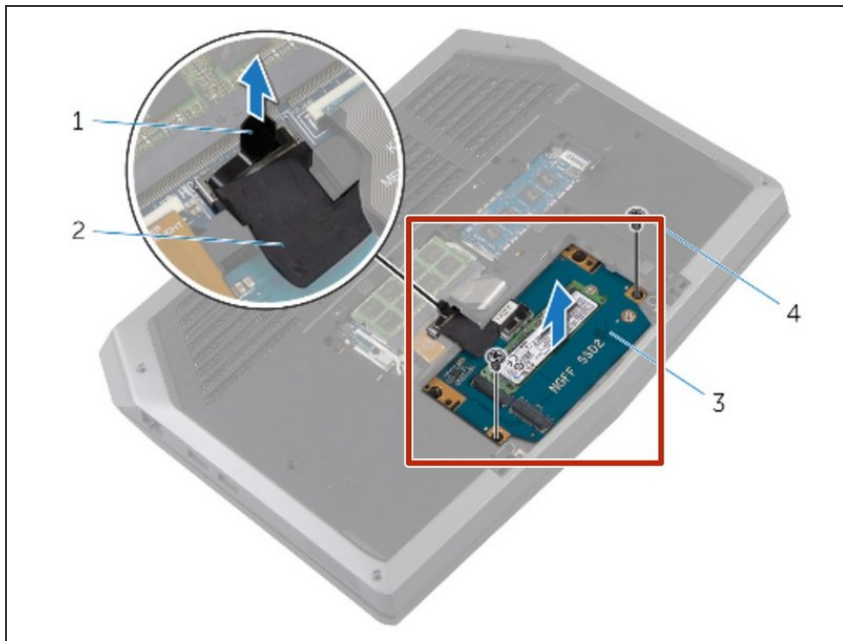
- Lift the solid-state drive assembly off the computer base.
- Make sure the screws are off the solid-state assembly.

Step 6 — Slide and Lift



- Slide and lift the solid-state drive off the solid-state assembly.

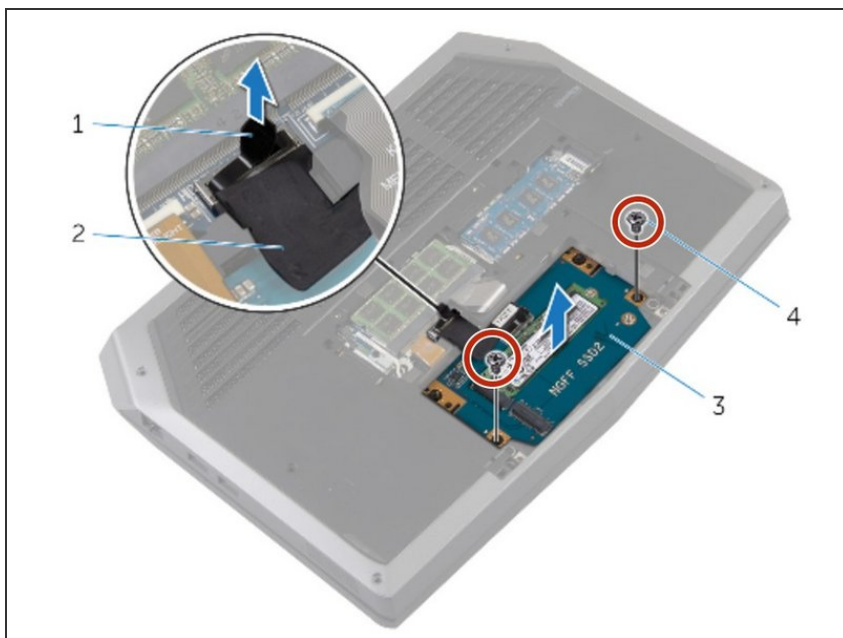
Step 7 — Replacing the Solid-State Drive



⚠ CAUTION: Solid-state drives are fragile. Exercise care when handling the hard drive.

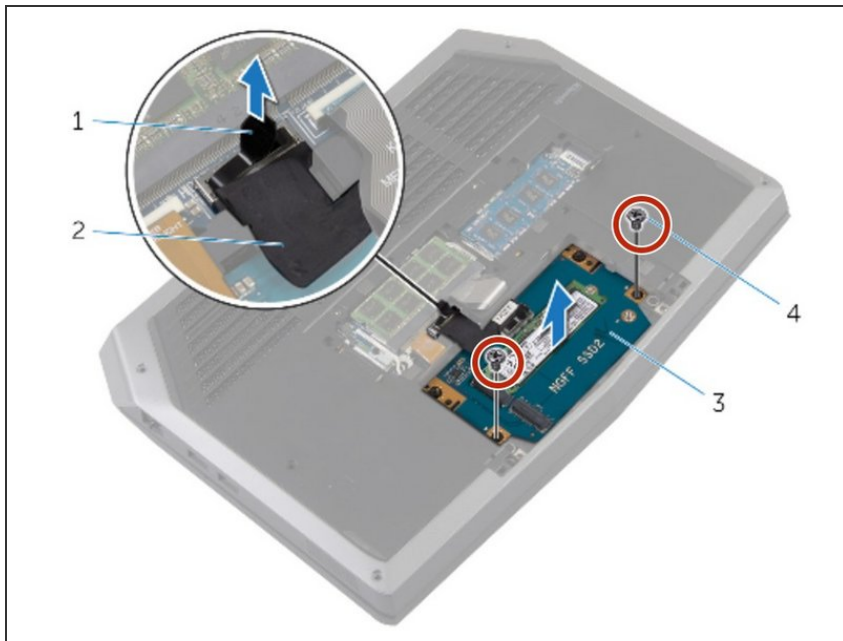
- Slide the new solid-state drive into the solid-state drive assembly.

Step 8 — Replace the Screw



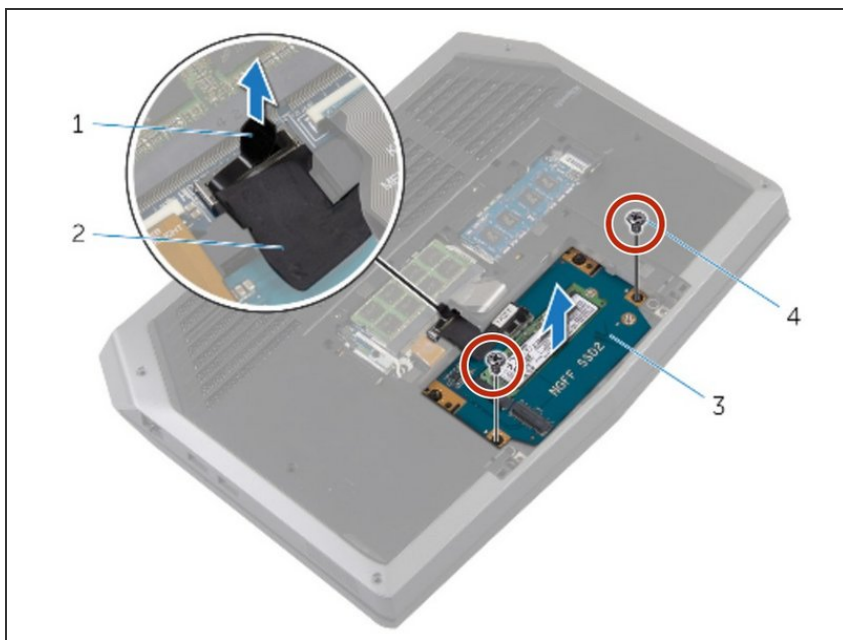
- Replace the screw that secures the solid-state drive assembly with the screw holes on the computer base.

Step 9 — Screw Align



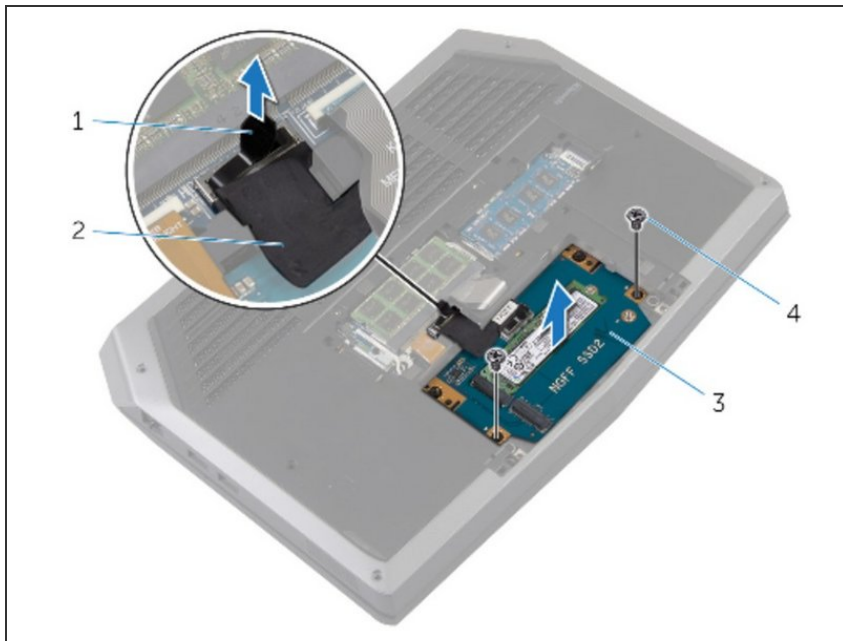
- Align the screw holes on the solid-state drive assembly with the screw holes on the computer base.

Step 10 — Screw Replacement



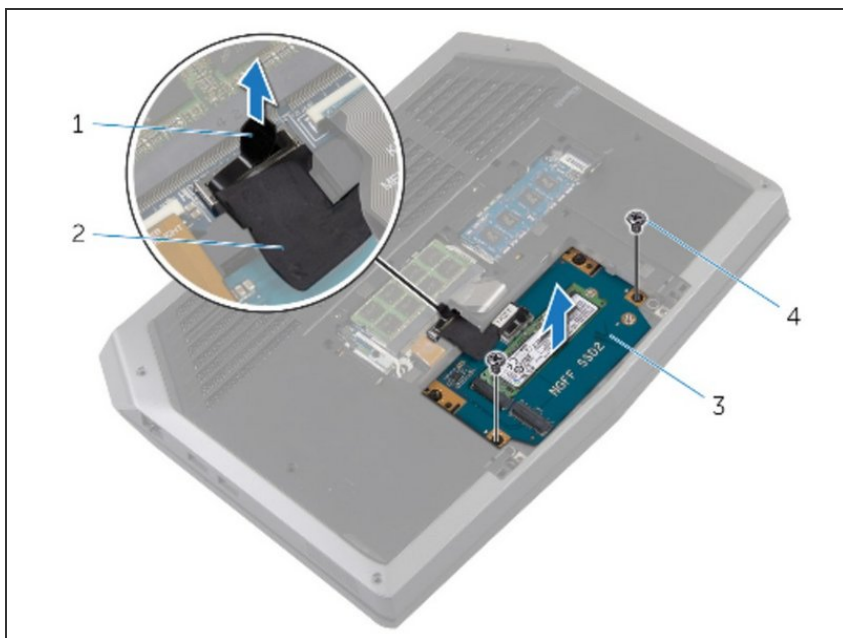
- Replace the screws that secure the solid-state drive assembly to the computer base.

Step 11 — Connecting the Drive



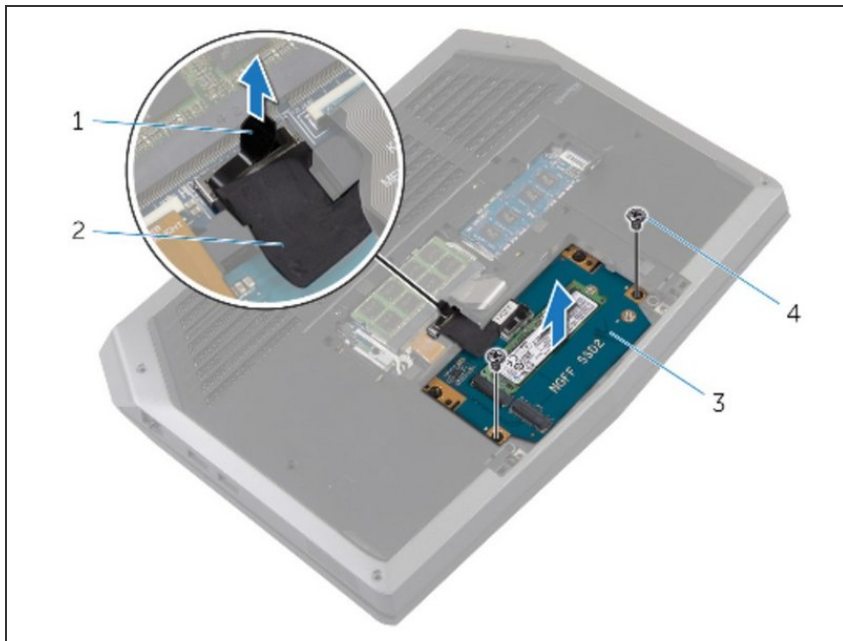
- Connect the solid-state drive cable to the system board.

Step 12 — Aligning Screws



- Align the screws on the solid-state drive bracket with the screw holes on the solid-state drive assembly.

Step 13 — Replacing Screws



- Replace the screws that secure the solid-state drive bracket to the solid-state drive assembly.