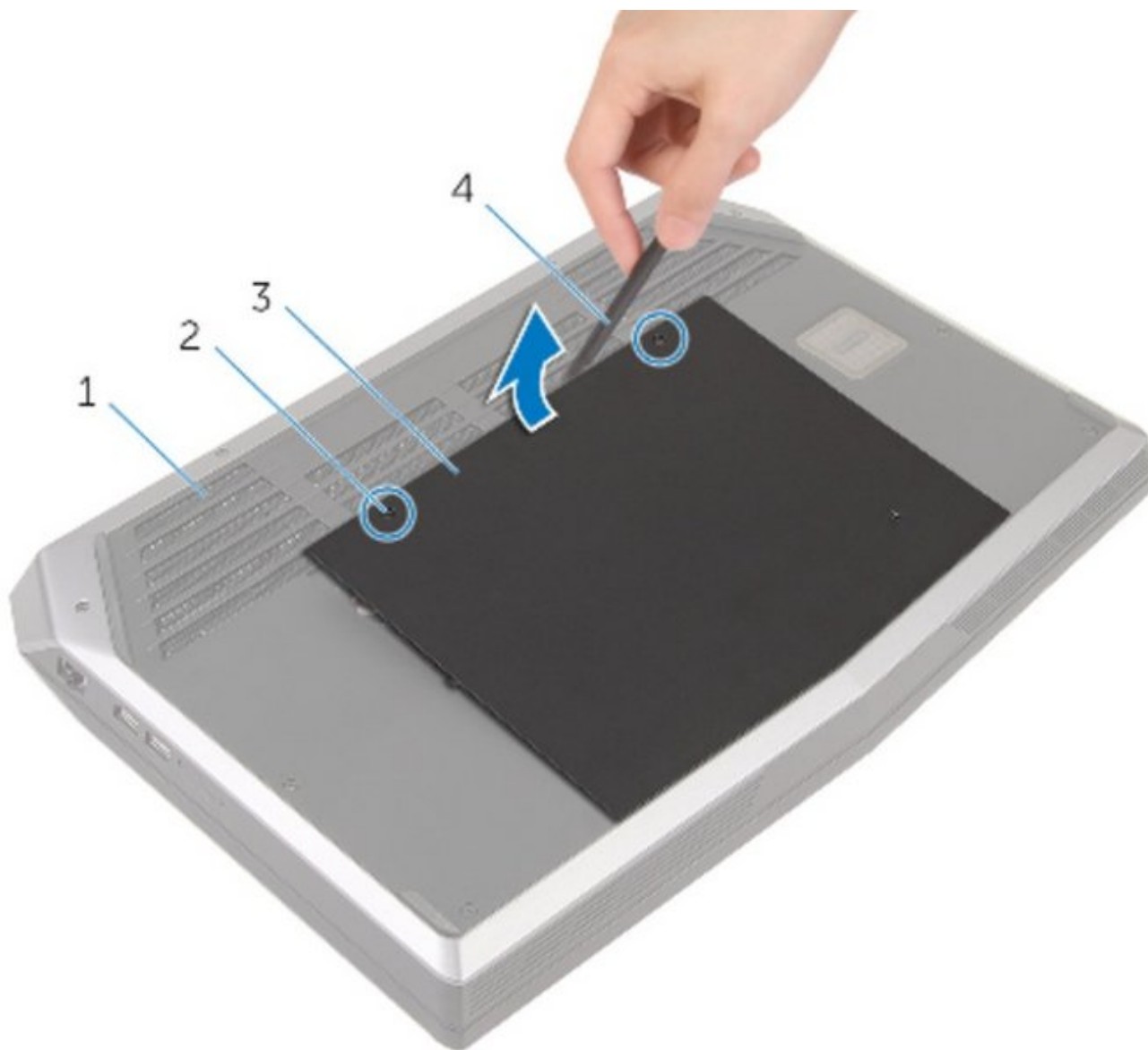




# Alienware 17 R2 Base Panel Replacement

In this guide, we will be removing and replacing the base panel.

Written By: Terrence15



---

## INTRODUCTION

In this guide, we will be showing you how to remove and replace the Base Panel.

---

### TOOLS:

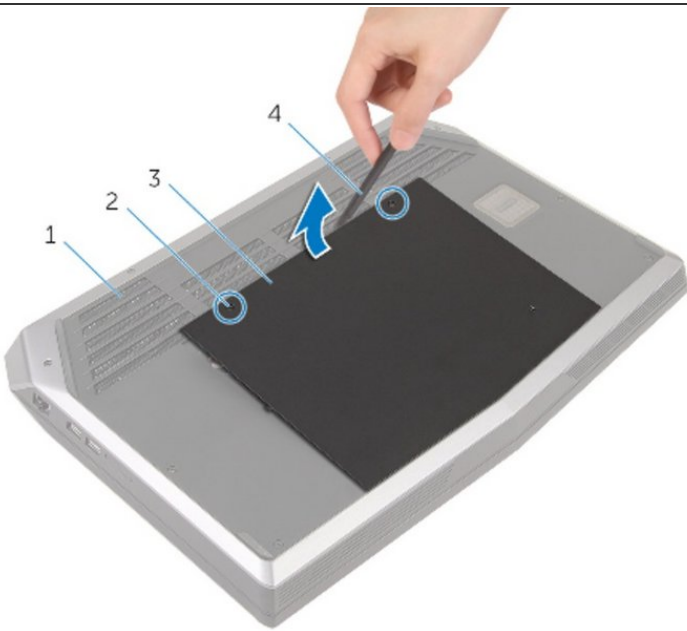
- [Phillips #0 Screwdriver](#) (1)
  - [Plastic Scribe](#) (1)
-

## Step 1 — WARNING



**⚠** Before working inside your computer, read the safety information that shipped with your computer and follow the steps in [Before Working Inside Your Computer](#). After working inside your computer, follow the instructions in [After Working Inside Your Computer](#).

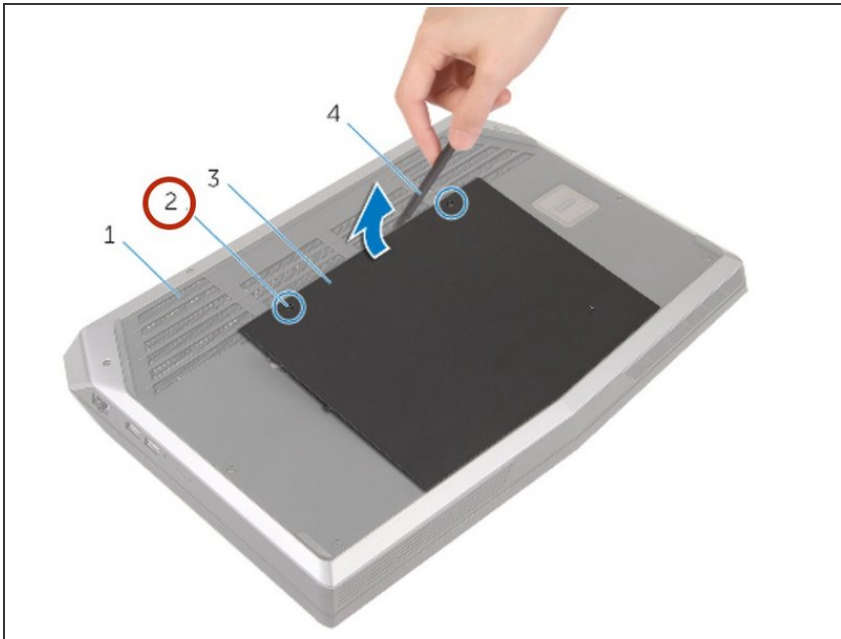
## Step 2 — Close the Display



- Close the display and turn the computer over.

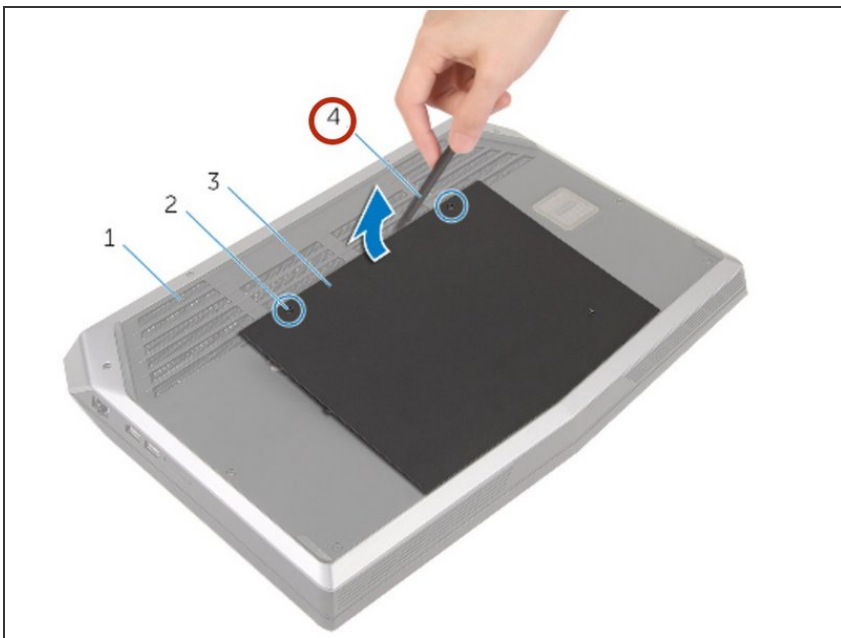
**⚠** Make sure PC is turned off!

### Step 3 — Loosen Screws



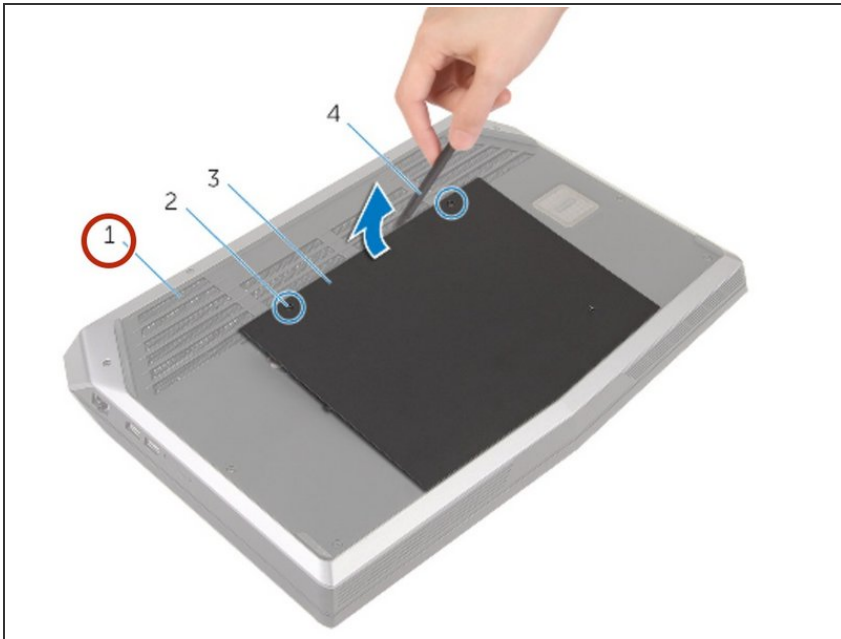
- Loosen the captive screws that secure the base panel to the computer base.

### Step 4 — Releasing Tabs



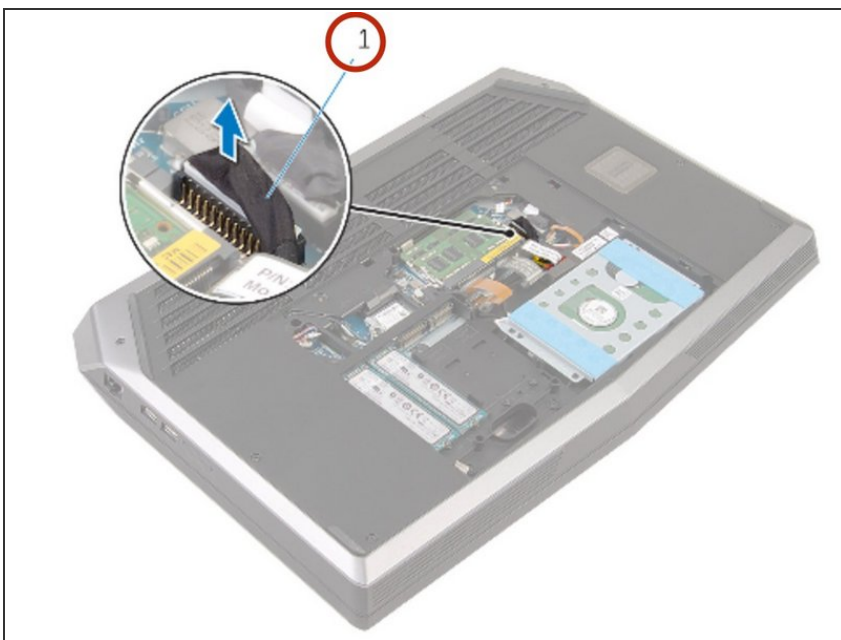
- Using a plastic scribe, gently release the tabs that secure the base panel to the computer base.

## Step 5 — Remove Base Panel



- Slide and remove the base panel from the computer base.

## Step 6 — Disconnect Battery Cable



- Disconnect the Battery cable from the system board.

## Step 7 — Turn PC Over



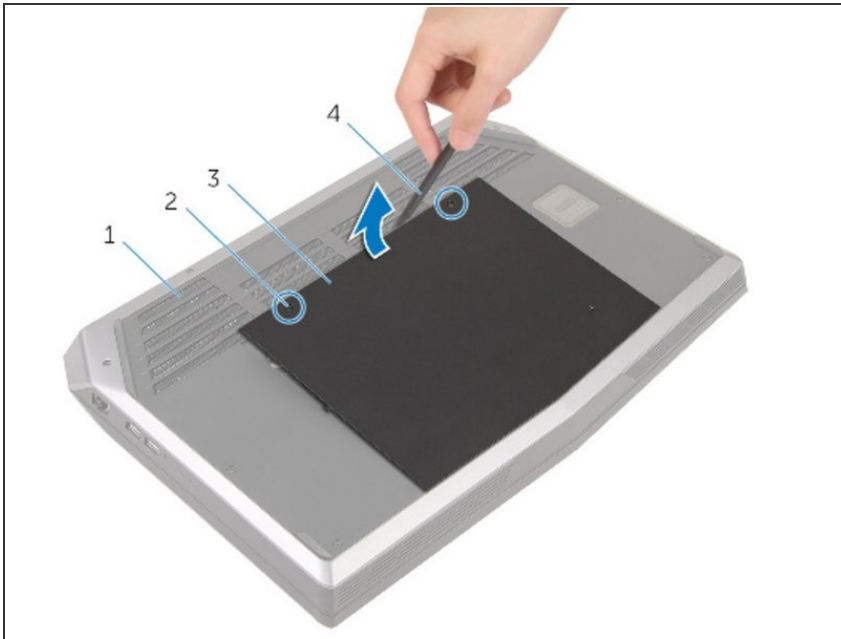
- Turn the computer over.

## Step 8 — Power



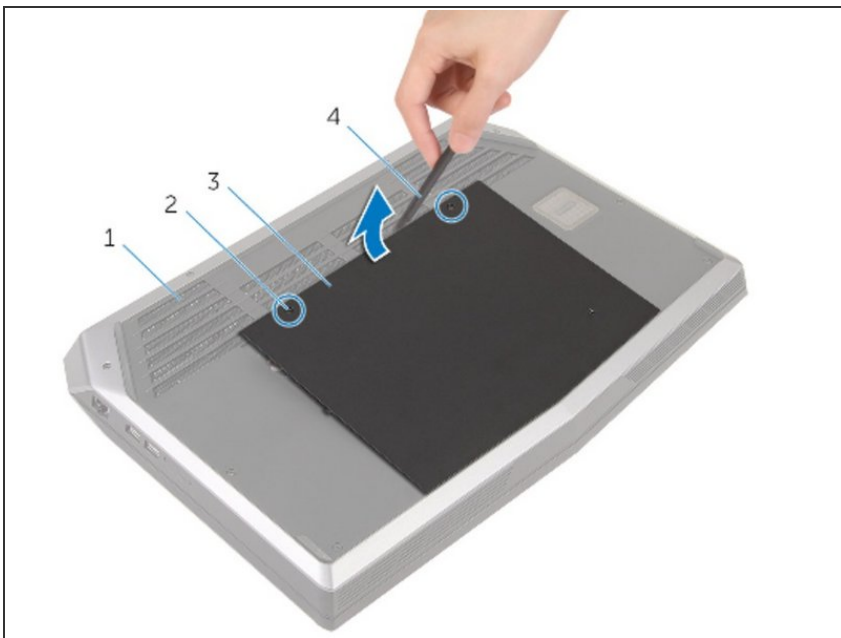
- Press and hold power button for 5 seconds to ground the system board.

## Step 9 — Battery Cable



- Connect the battery cable to the system board.

## Step 10 — Tighten Screws



- Tighten the captive screws that secure the base panel to the computer base.

To reassemble your device, follow these instructions in reverse order.