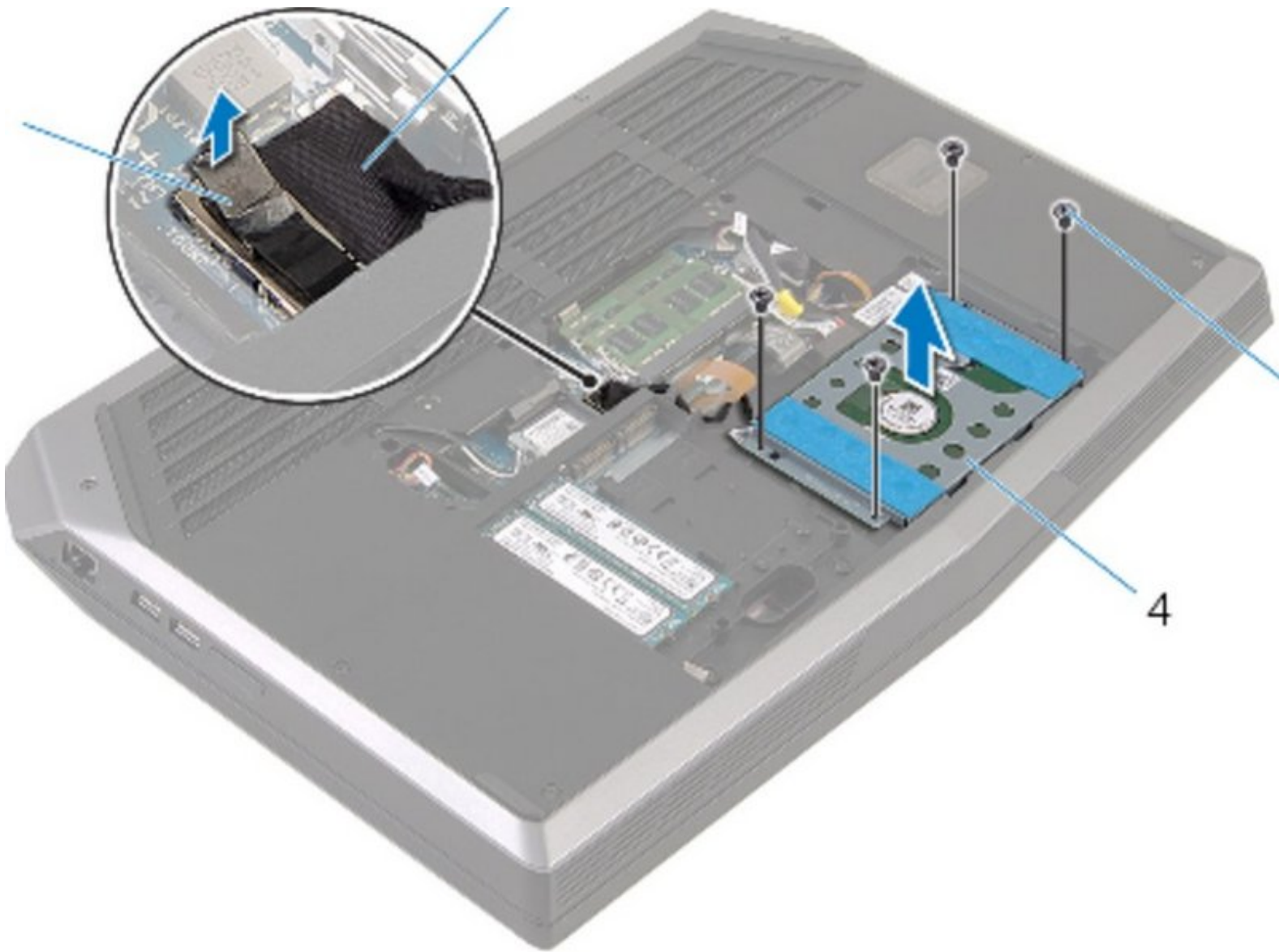




Alienware 17 R2 Hard Drive Replacement

The Replacement of the Hard Drive.

Written By: Terrence15



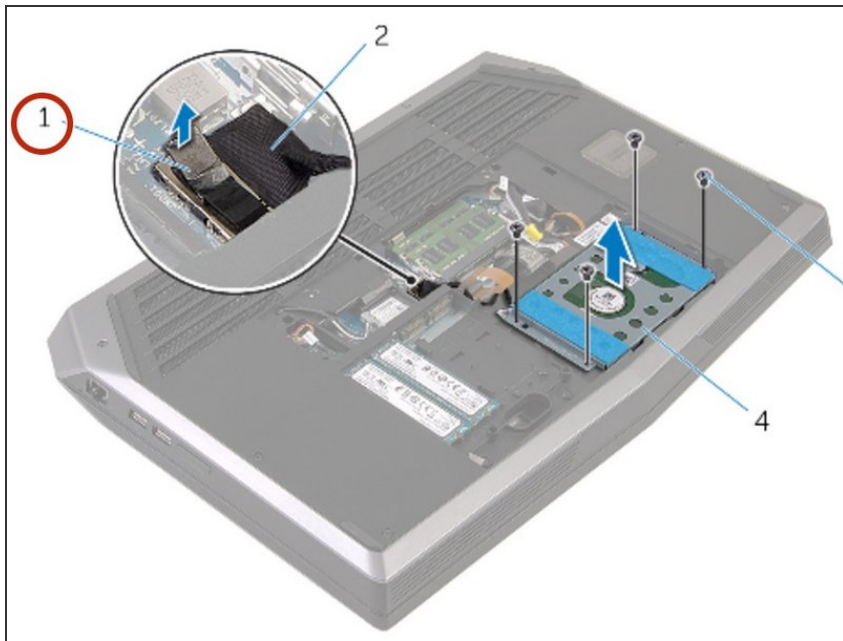
INTRODUCTION

In this guide, we will be showing you how to remove and replace the Hard Drive.

TOOLS:

- [Phillips #0 Screwdriver](#) (1)
-

Step 1 — Disconnecting the Hard-Drive Cable



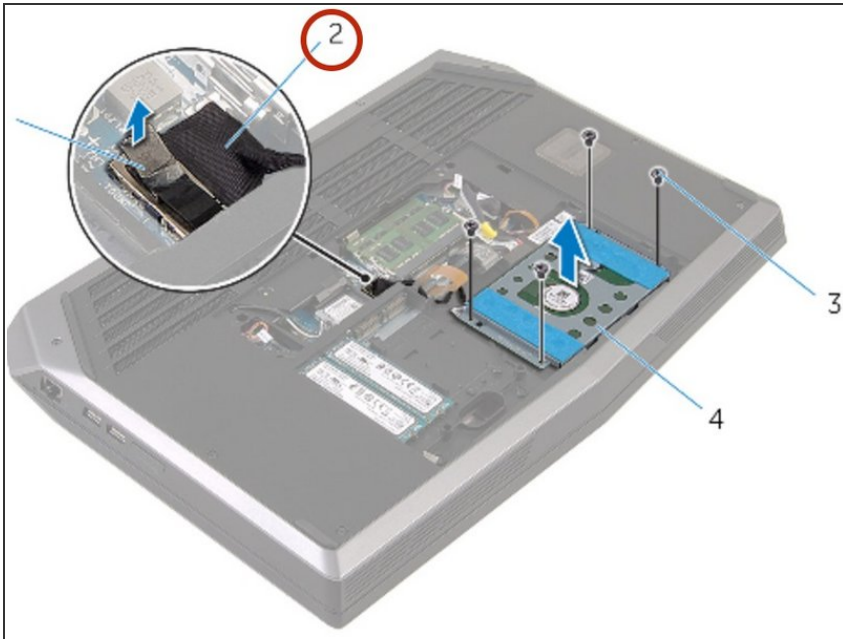
⚠ WARNING : Before working inside your computer, read the safety information that shipped with your computer and follow the steps in [Before Working Inside Your Computer](#). After working inside your computer, follow the instructions in [After Working Inside Your Computer](#).

⚠ CAUTION: Hard drives are fragile. Exercise care when handling the hard drive.

⚠ CAUTION: To avoid data loss, do not remove the hard drive while the computer is in sleep or on state.

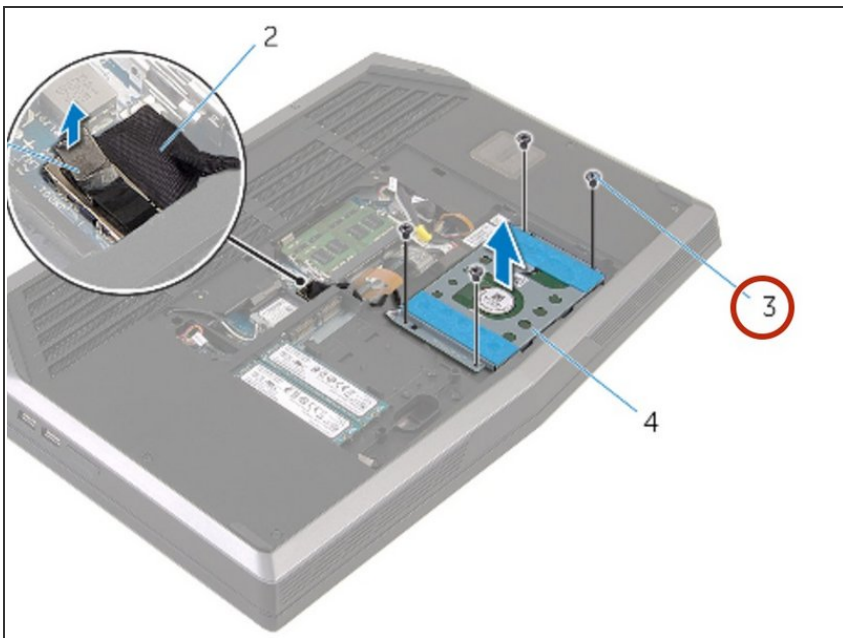
- Using the pull tab, disconnect the hard-drive cable from the system board.

Step 2 — Removing the Cable



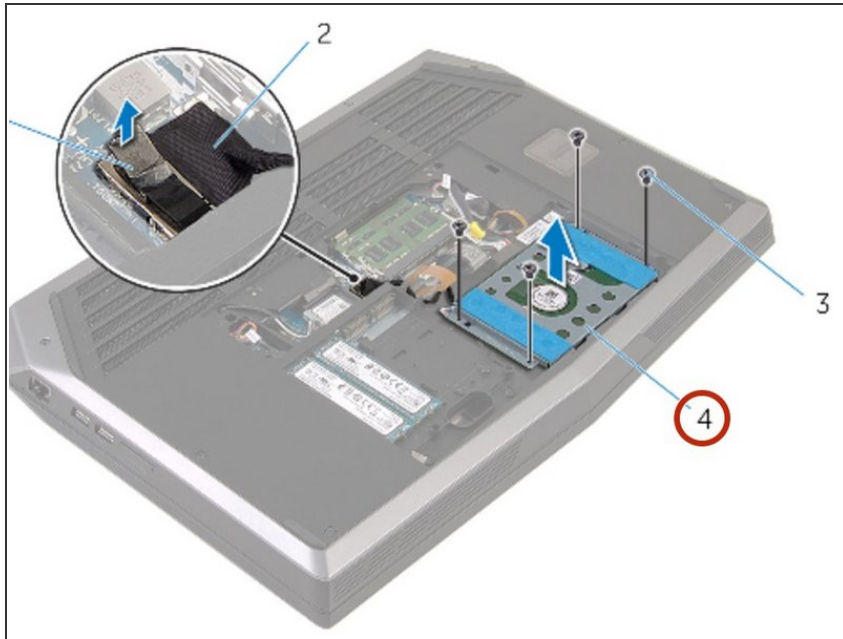
- Note the hard-drive cable routing and remove the cable from the routing guides on the computer base.

Step 3 — Removing Screws



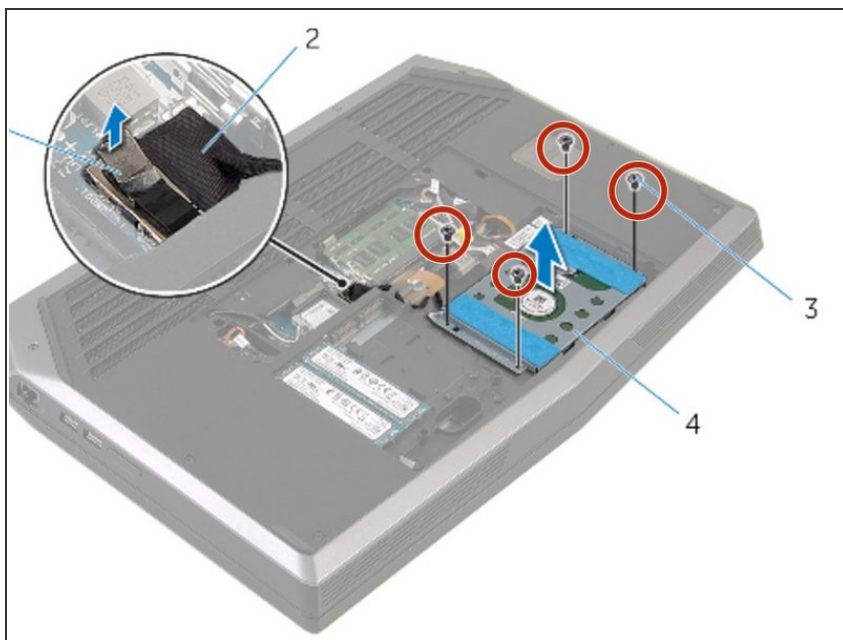
- Remove the screws that secure the hard-drive assembly to the computer base.

Step 4 — Lifting the Hard-Drive Assembly



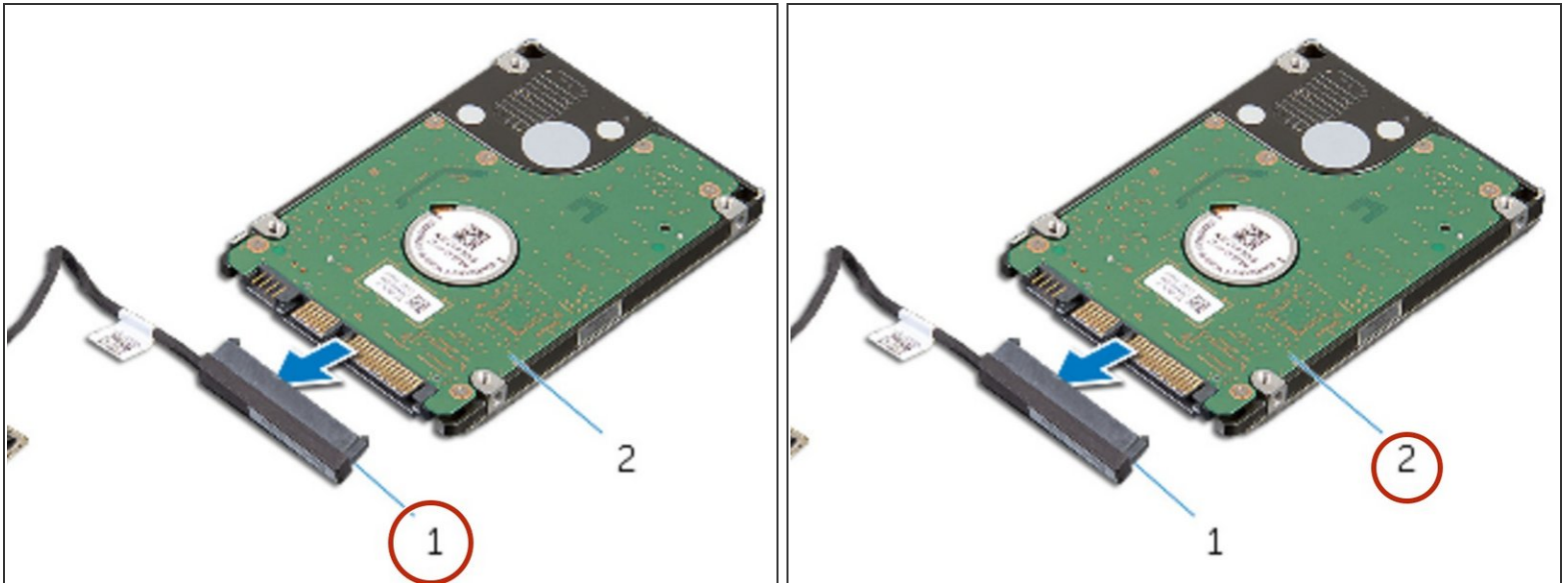
- Lift the hard-drive assembly off the computer base.

Step 5 — Removing Screws



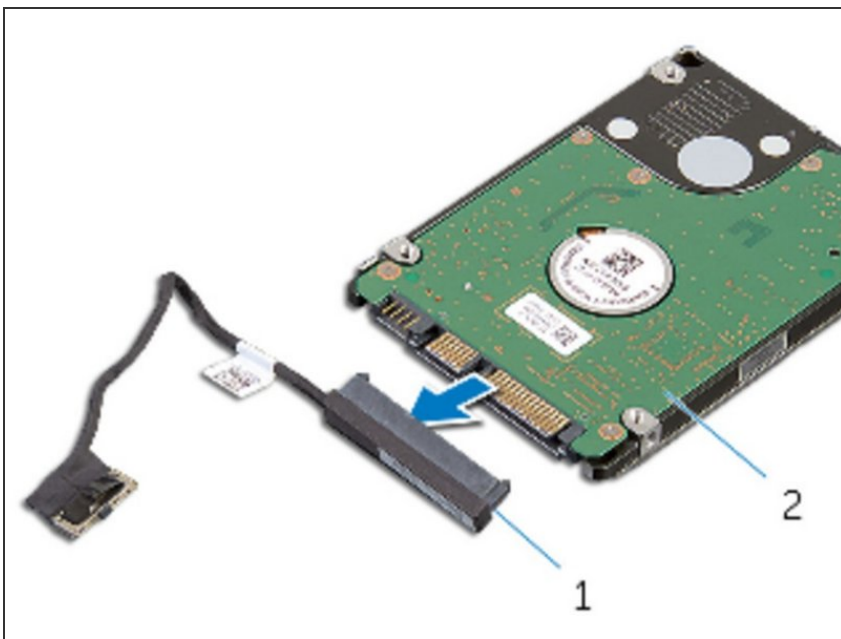
- Remove the screws that secure the hard-drive bracket to the hard drive.

Step 6 — Disconnecting the Interposer



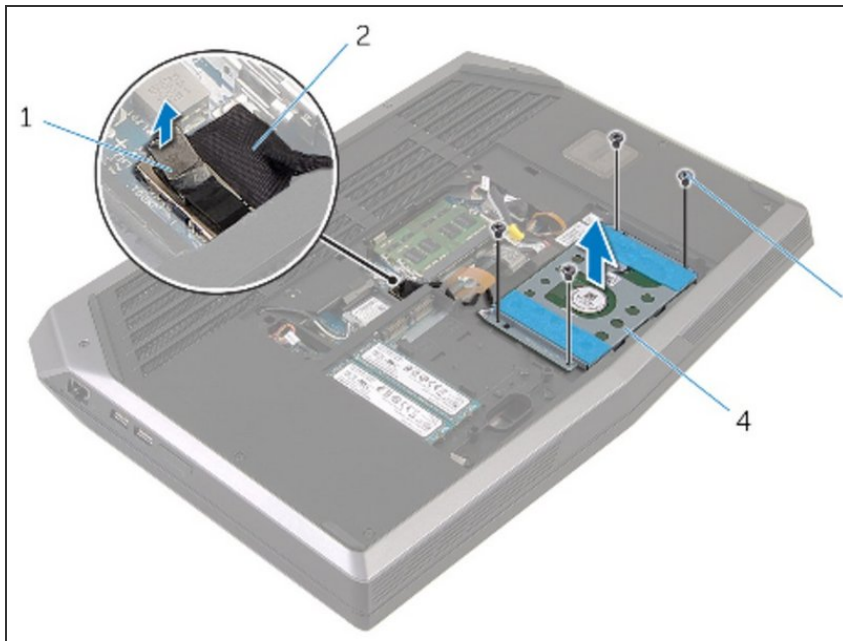
- Disconnect the interposer from the hard drive.

Step 7 — Connecting the Interposer



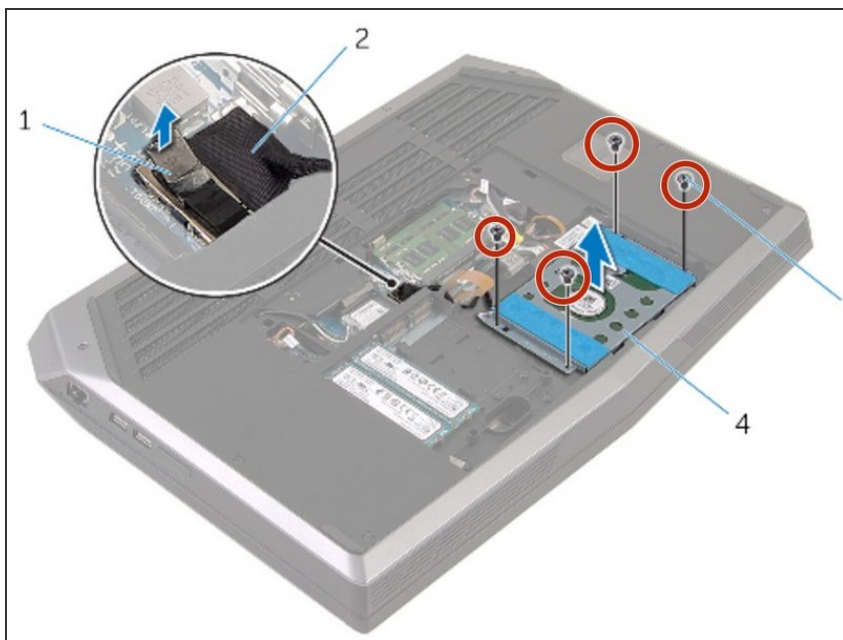
- Connect the **new** interposer to the hard drive.

Step 8 — Screw Align



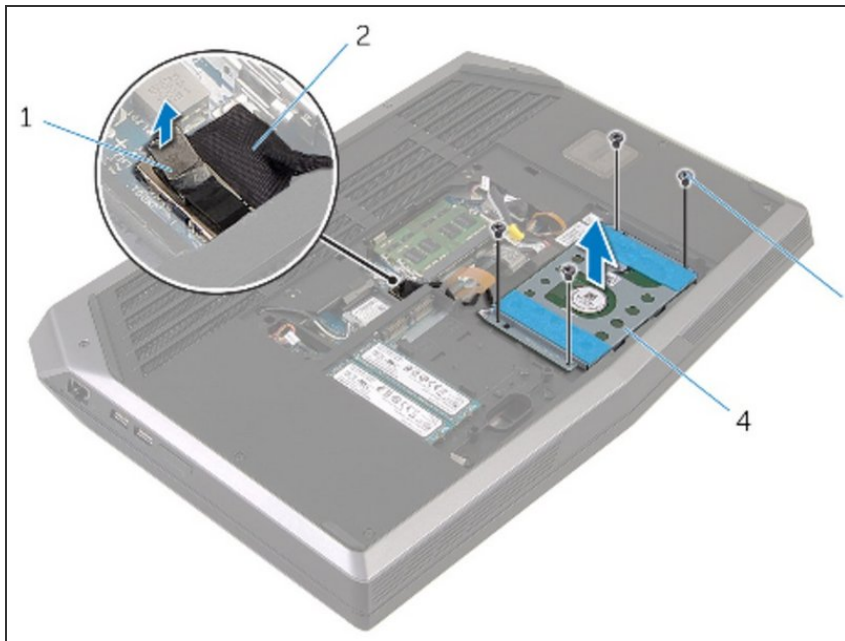
- Align the screw holes on the hard-drive bracket with the screw holes on the hard-drive assembly.

Step 9 — Replacing Screws



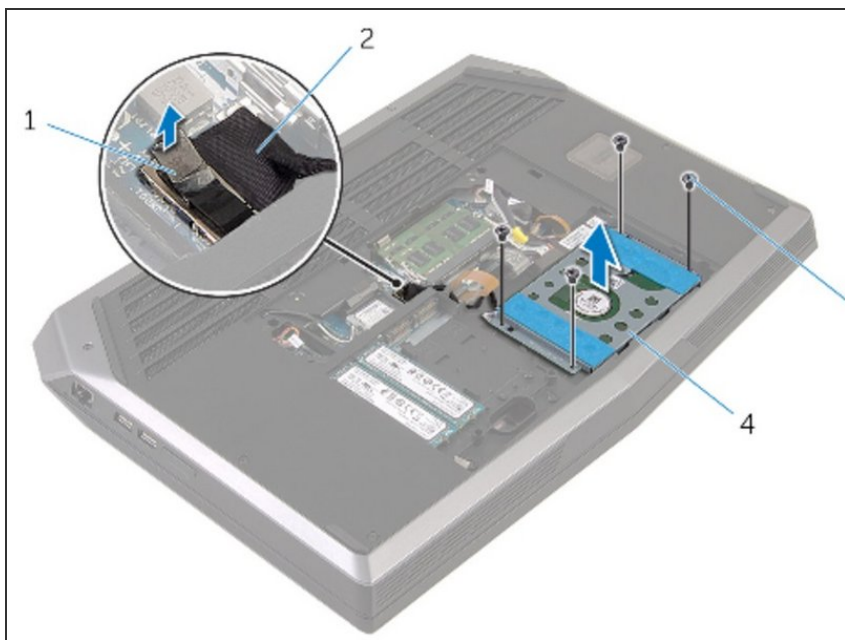
- Replace the screws that secure the hard-drive bracket to the hard-drive assembly.

Step 10 — Screw Align



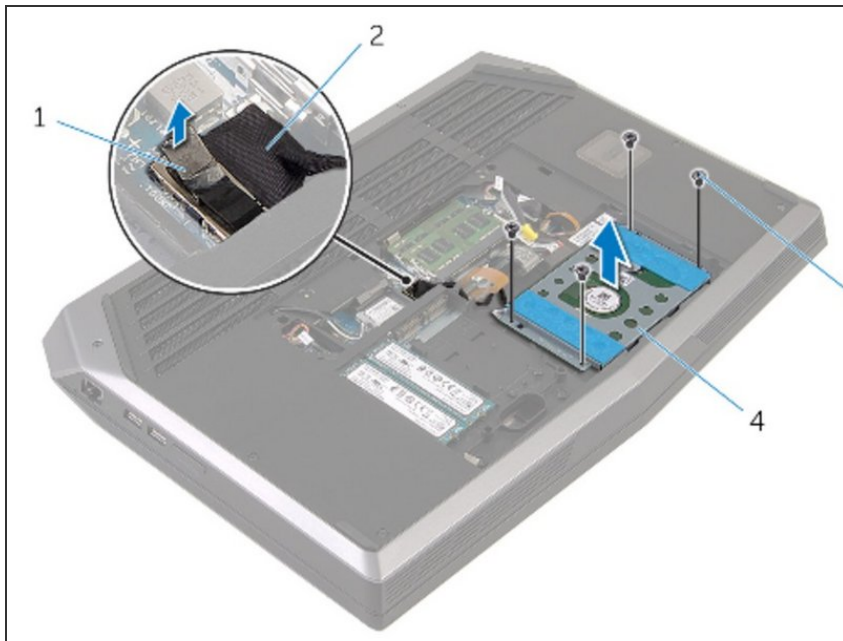
- Align the screw holes on the hard-drive assembly with the screw holes on the computer base.

Step 11 — Replacing Screws



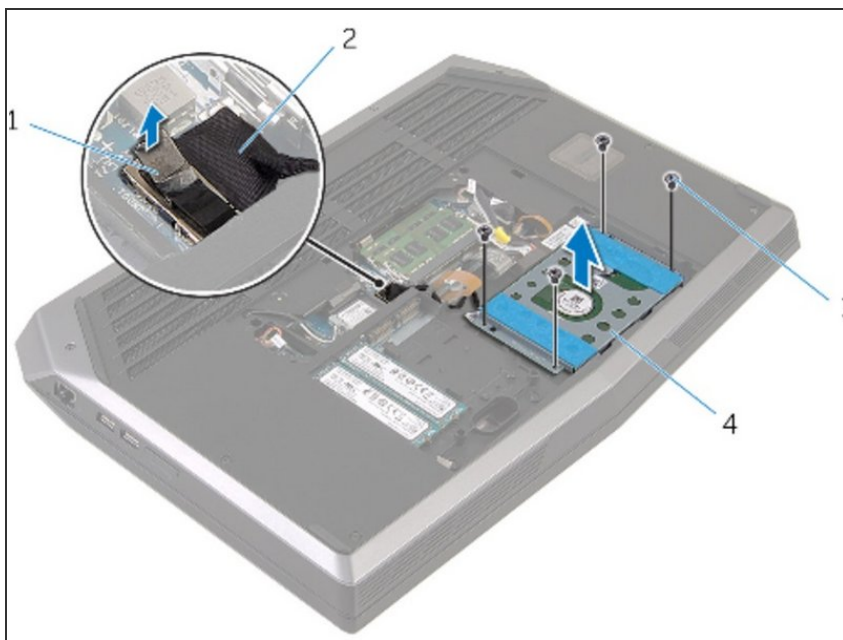
- Replace the screws that secure the hard-drive assembly to the computer base.

Step 12 — Hard-Drive Cable Route



- Route the hard-drive cable through the routing guides on the computer base.

Step 13 — Connecting the Hard-Drive Cable



- Connect the hard-drive cable to the system board.