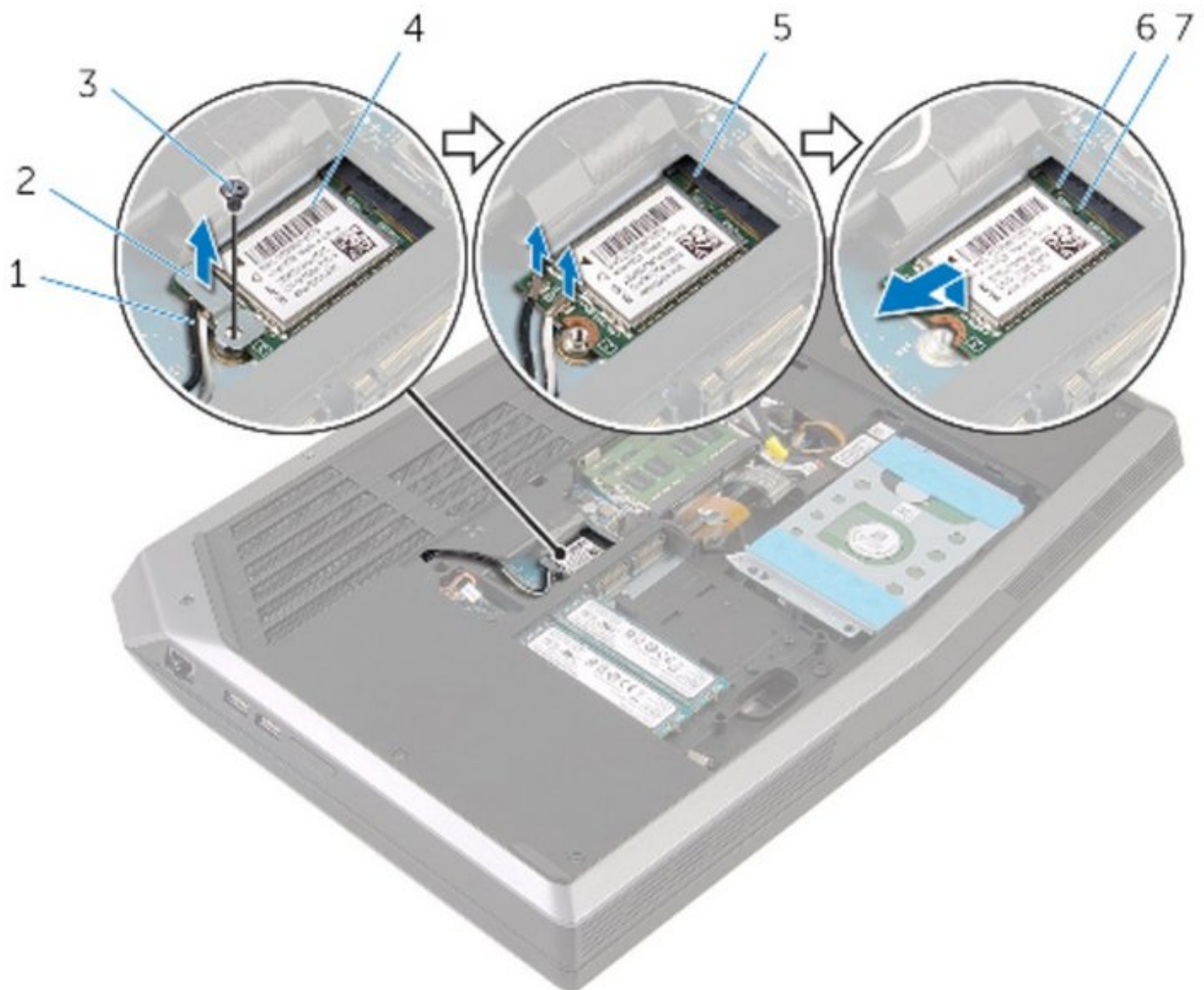




Alienware 17 R2 Wireless Card Replacement

In this guide, I will be showing you how to remove and replace the wireless card of you Alienware 17 R2.

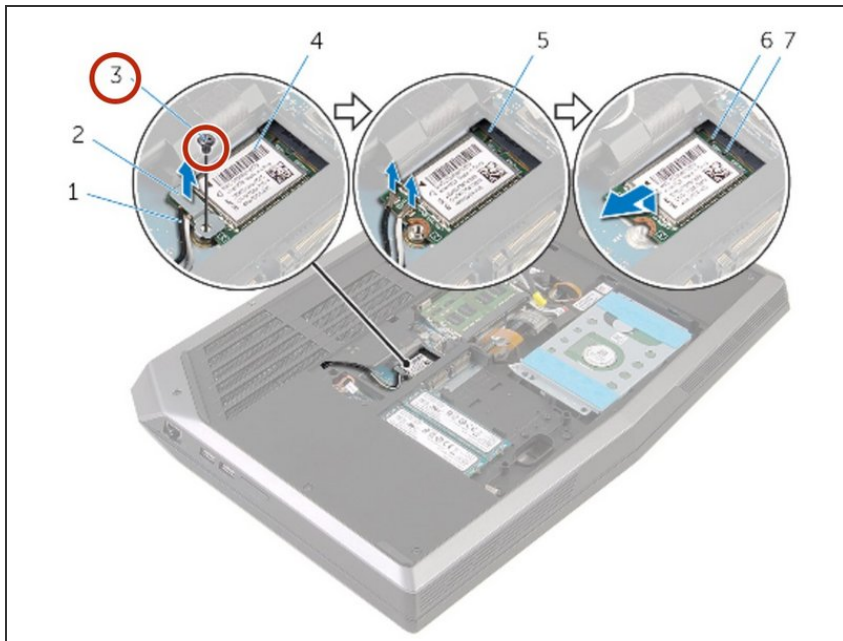
Written By: Terrence15



 **TOOLS:**

- [Phillips #0 Screwdriver \(1\)](#)
-

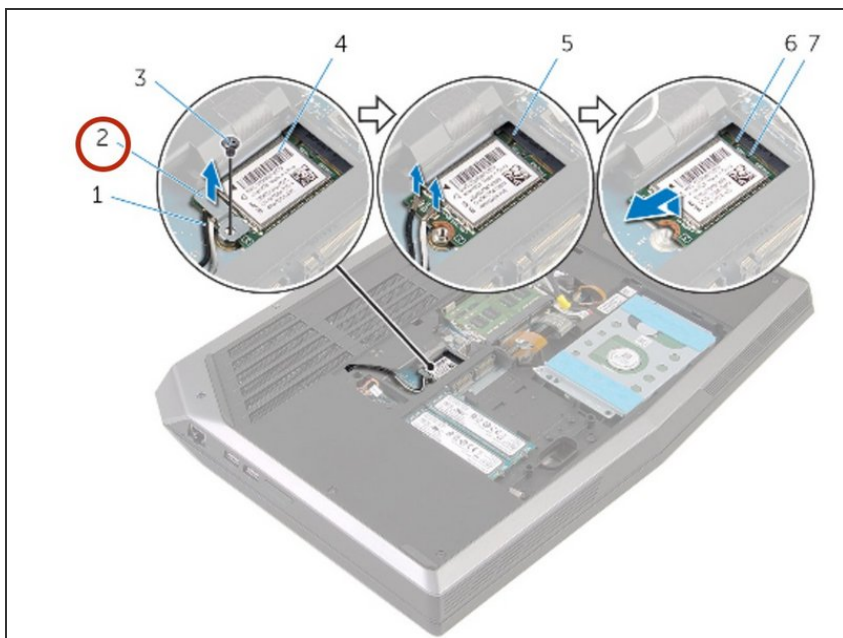
Step 1 — Removing the Screw



⚠ WARNING: Before working inside your computer, read the safety information that shipped with your computer and follow the steps in [Before Working Inside Your Computer](#). After working inside your computer, follow the instructions in [After Working Inside Your Computer](#).

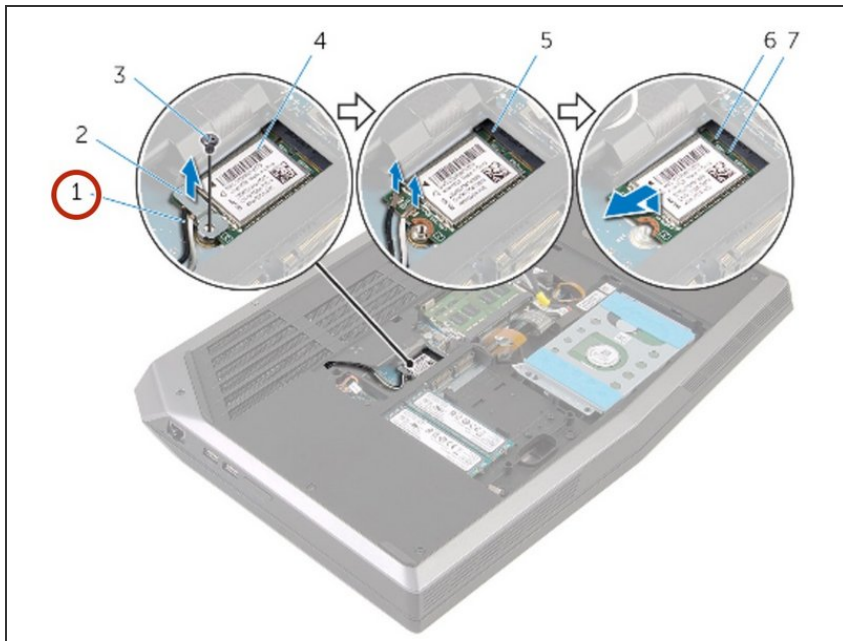
- Remove the screw that secures the wireless-card bracket and the wireless card to the system board.

Step 2 — Lifting the Card Bracket



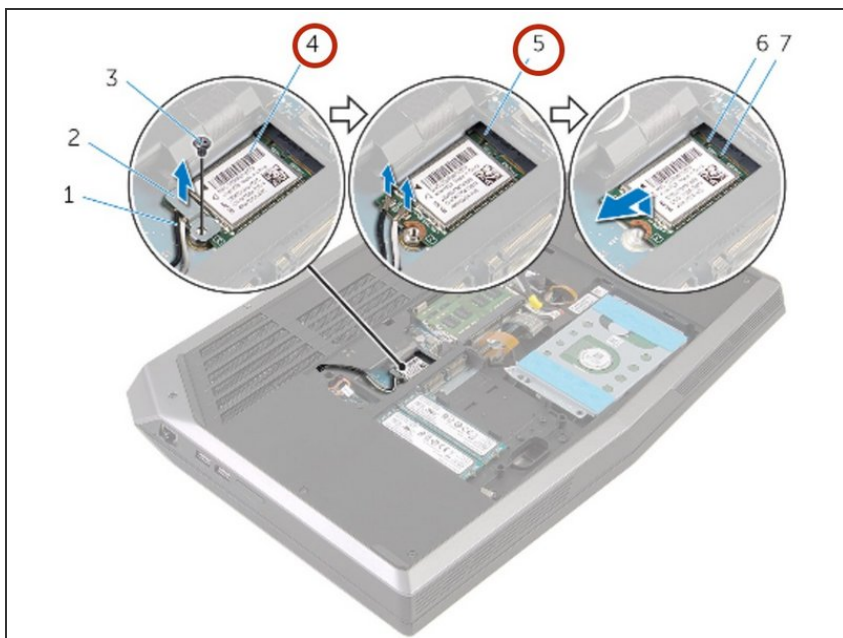
- Lift the wireless-card bracket off the wireless card.

Step 3 — Disconnecting Antenna Cables



- Disconnect the antenna cables from the wireless card.

Step 4 — Removing the Wireless Card



- Lift and slide the wireless card from the wireless-card slot.

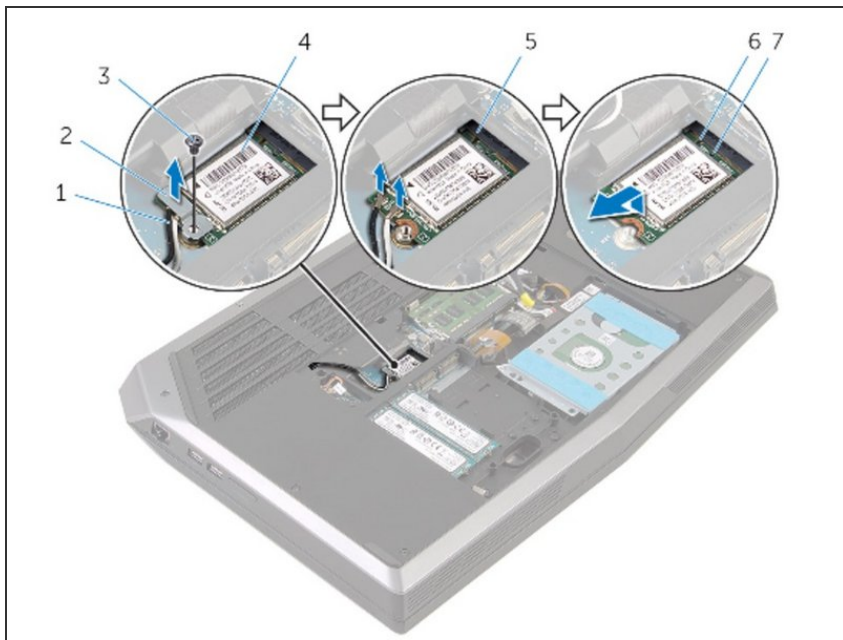
Step 5



⚠ CAUTION: To avoid damaging the wireless card, do not place any cables under it.

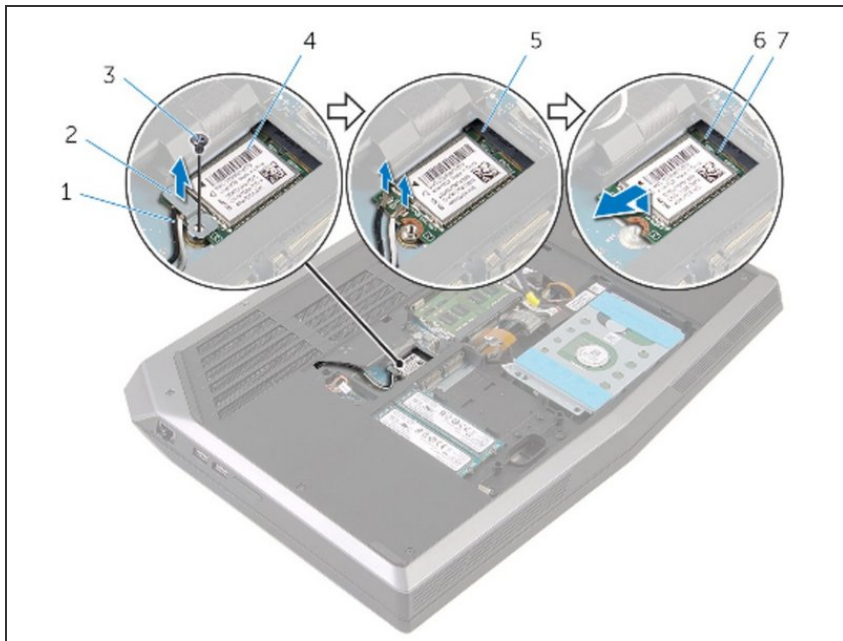
- Align the notch on the wireless card with the tab on the wireless-card slot.

Step 6 — Sliding the Wireless Card



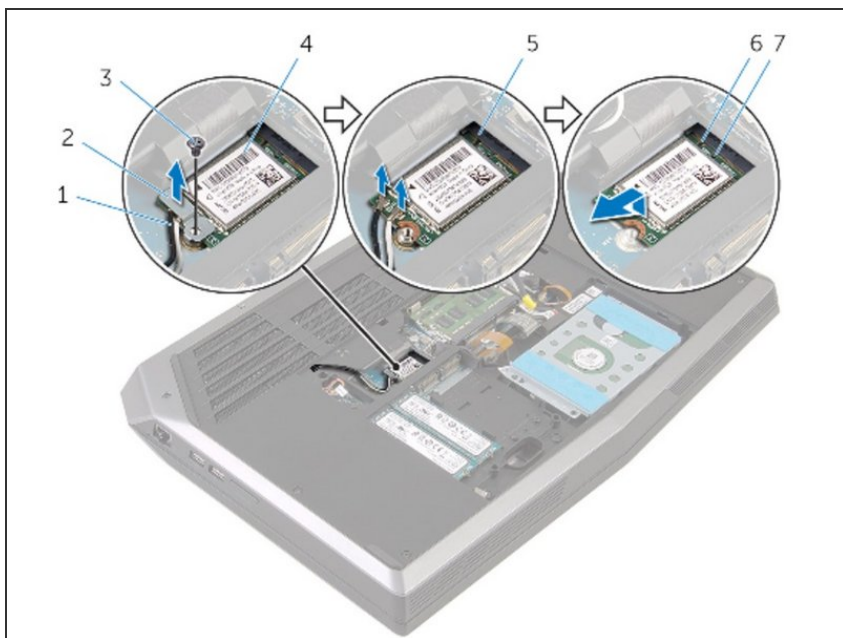
- Slide the wireless card at an angle into the wireless-card slot.

Step 7 — Connecting Cables to the Wireless Card



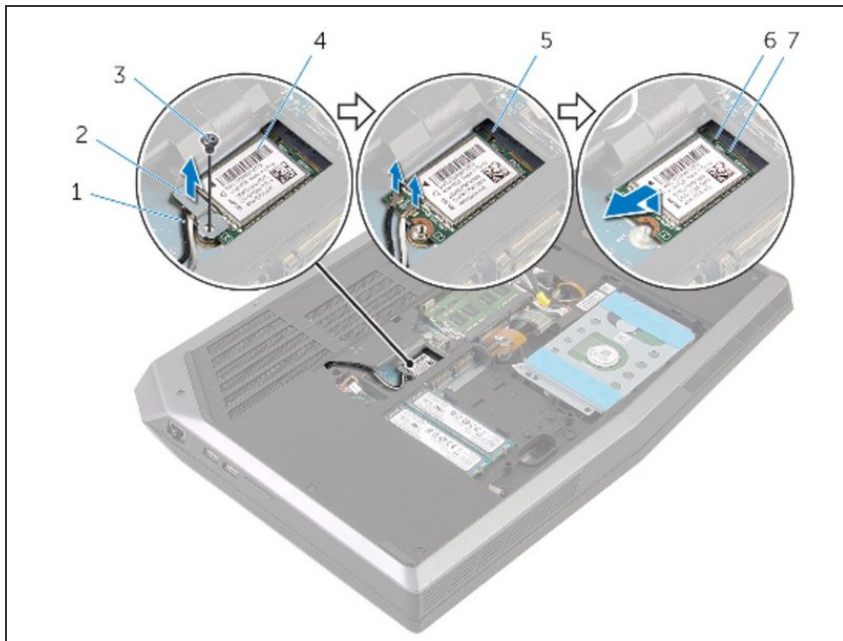
- Connect the antenna cables to the wireless-card.
- ⓘ The following is the antenna-cable color color scheme for the wireless card: Main (white triangle) = White
Auxiliary (black triangle) = Black

Step 8 — Aligning the Screw Holes



- Align the screw hole on the wireless-card bracket with the screw hole on the wireless card.

Step 9 — Replacing the Screw



- Replace the screw that secures the wireless-card bracket and the wireless card to the system board.

To reassemble your device, follow these instructions in reverse order.