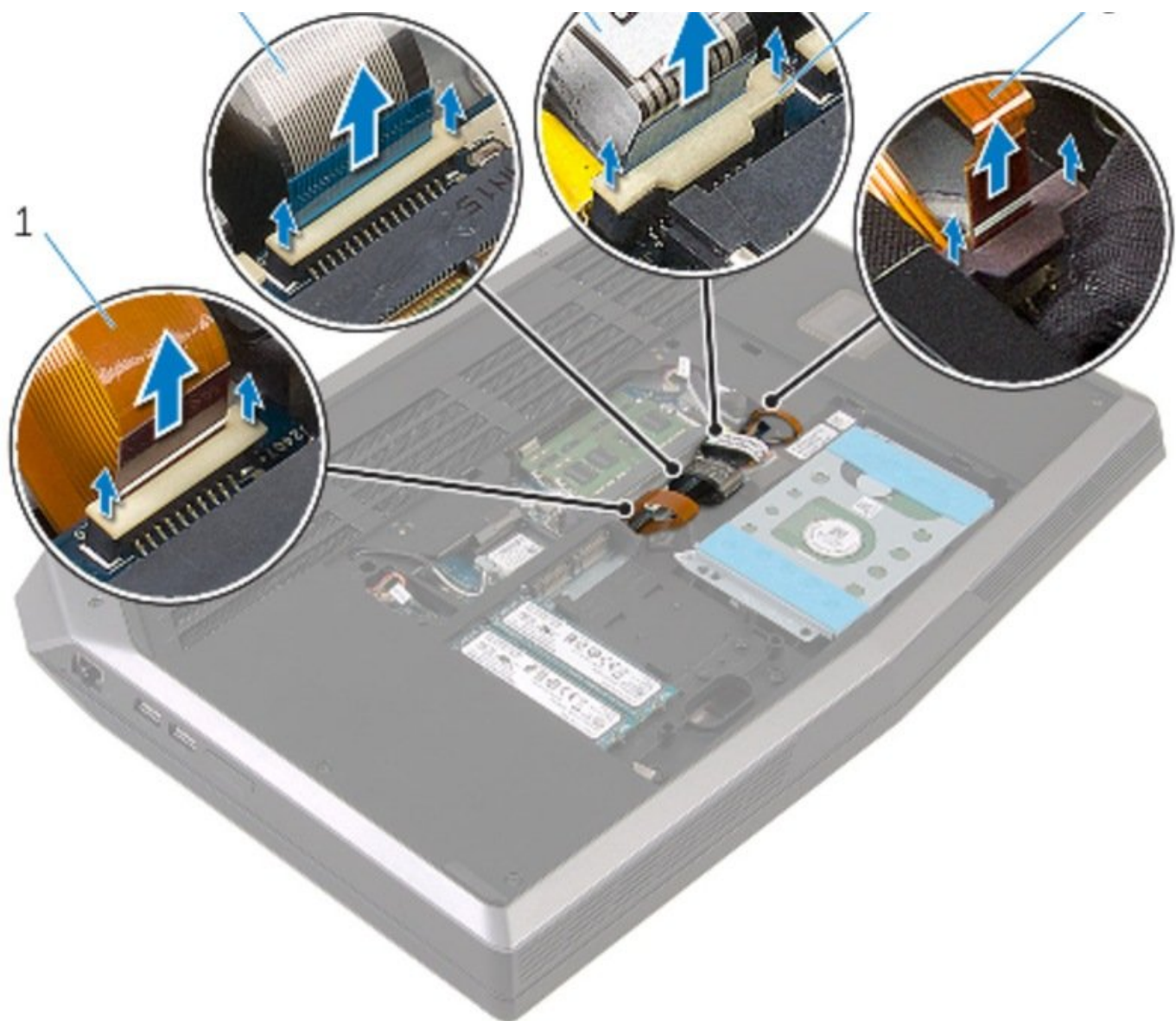




Alienware 17 R2 Palm Rest Replacement

In this guide, I will be showing you how to remove and replace the palm rest on your Alienware 17 R2.

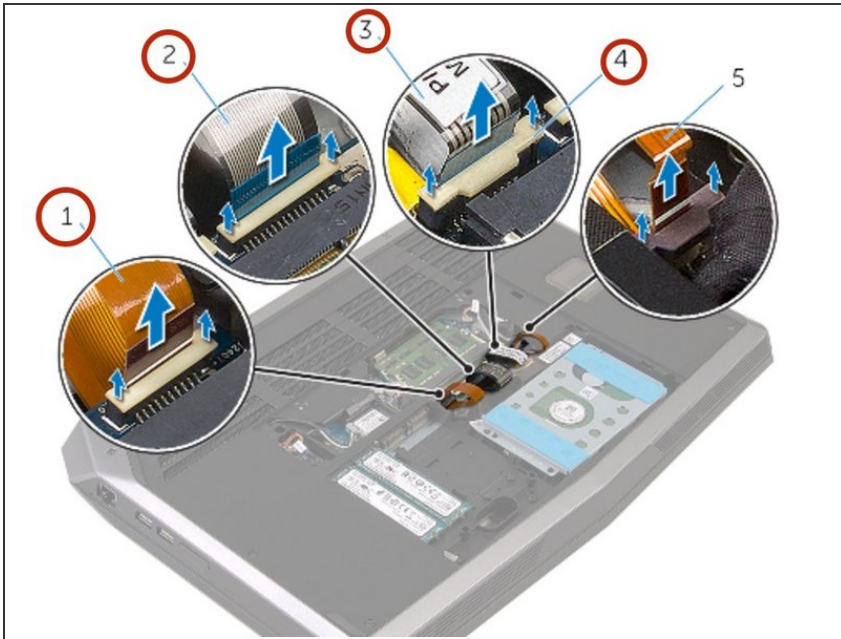
Written By: Terrence15



 **TOOLS:**

- [Phillips Screwdriver](#) (1)
 - [Plastic Scribe](#) (1)
-

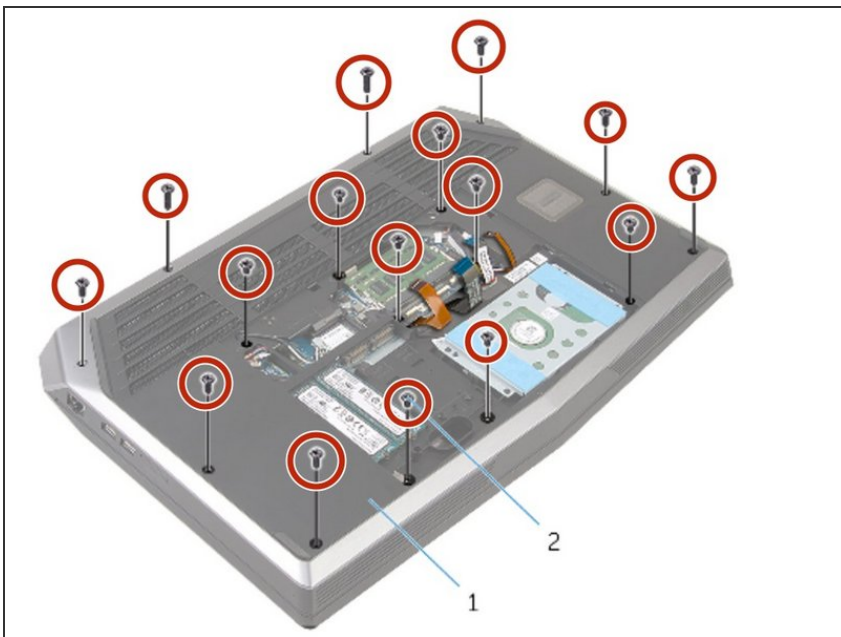
Step 1 — Disconnecting the Keyboard Cable



⚠ WARNING : Before working inside your computer, read the safety information that shipped with your computer and follow the steps in [Before Working Inside Your Computer](#). After working inside your computer, follow the instructions in [After Working Inside Your Computer](#).

- Lift the latches and disconnect the keyboard cable, keyboard-backlight cable, macro-keys cable and macro-keys backlight cable from the system board.

Step 2 — Removing Screws



- Remove the screws that secure the palm-rest assembly to the computer base.

Step 3 — Lifting the Computer Base



- Lift the computer base slightly and push the palm-rest assembly through the slot on the computer base to release the tabs on the palm-rest assembly.

Step 4 — Turning the Computer Over



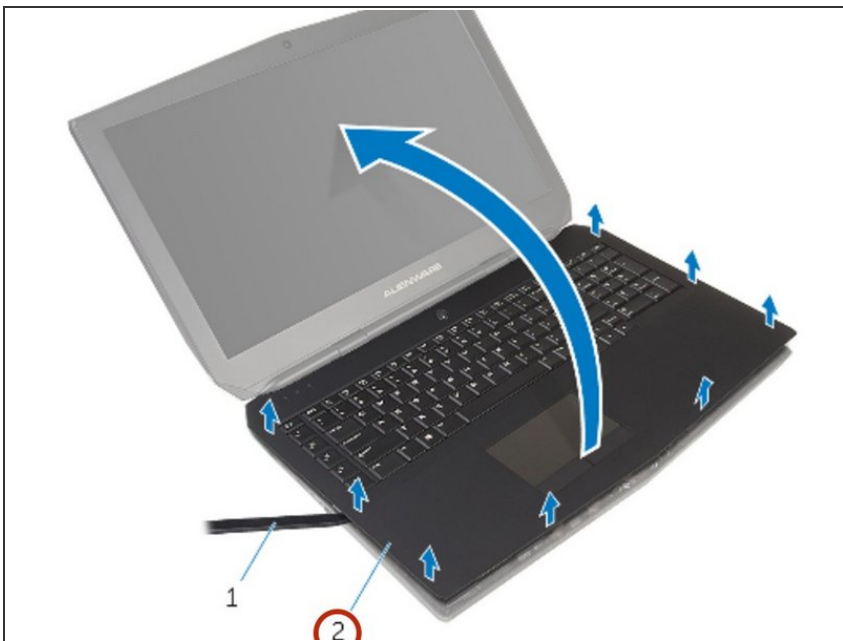
- Turn the computer over and open the display as far as possible.

Step 5 — Prying the Edges



- Using a plastic scribe, pry up along the edges of the palm rest assembly.

Step 6 — Lifting the Palm-Rest Assembly



- Gently lift the palm-rest assembly and turn it over.

Step 7 — Peeling the tape



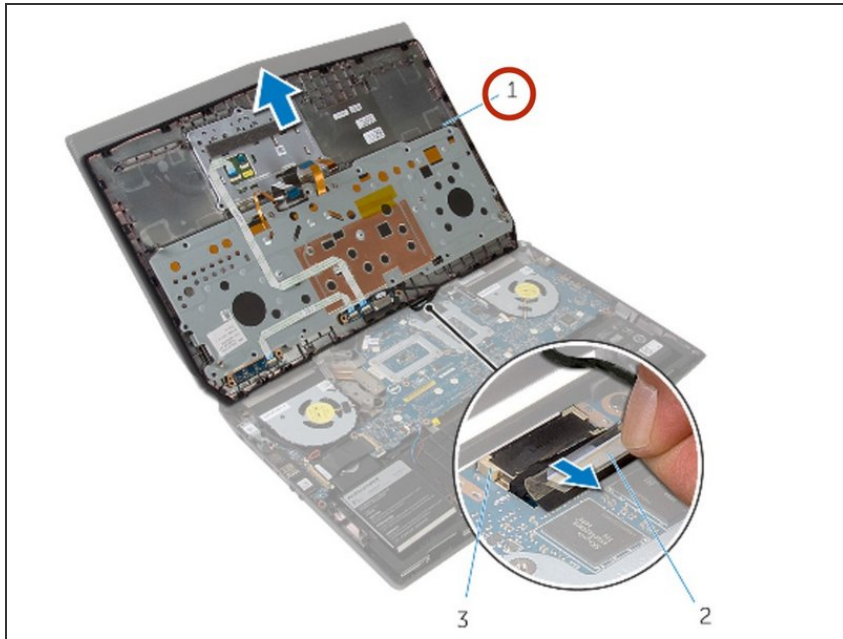
- Peel the tape that secures the power-button cable to the system board.

Step 8 — Disconnecting the Power Board Cable



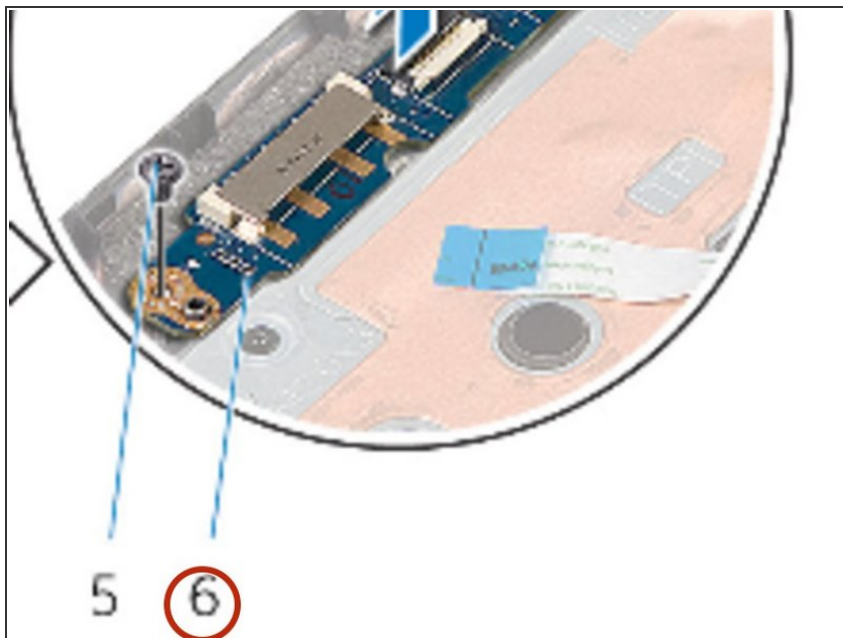
- Disconnecting the power-board cable from the system board.

Step 9 — Lifting the Palm-Rest Assembly



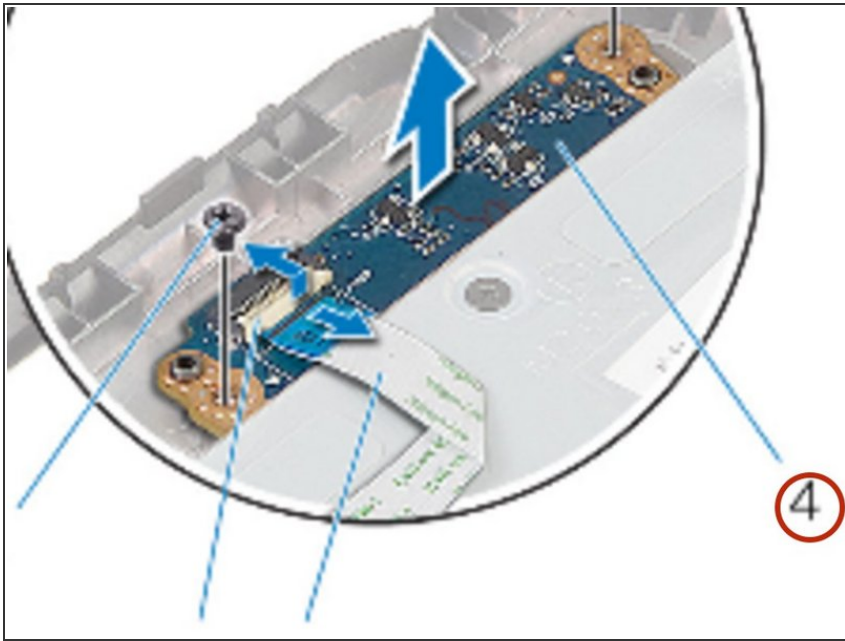
- Lift the palm-rest assembly off the computer base.

Step 10 — Removing the Power-Button Board



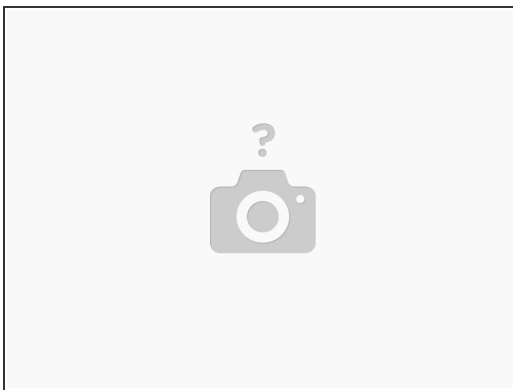
- Remove the power-button board.

Step 11 — Status-Light Board Removal



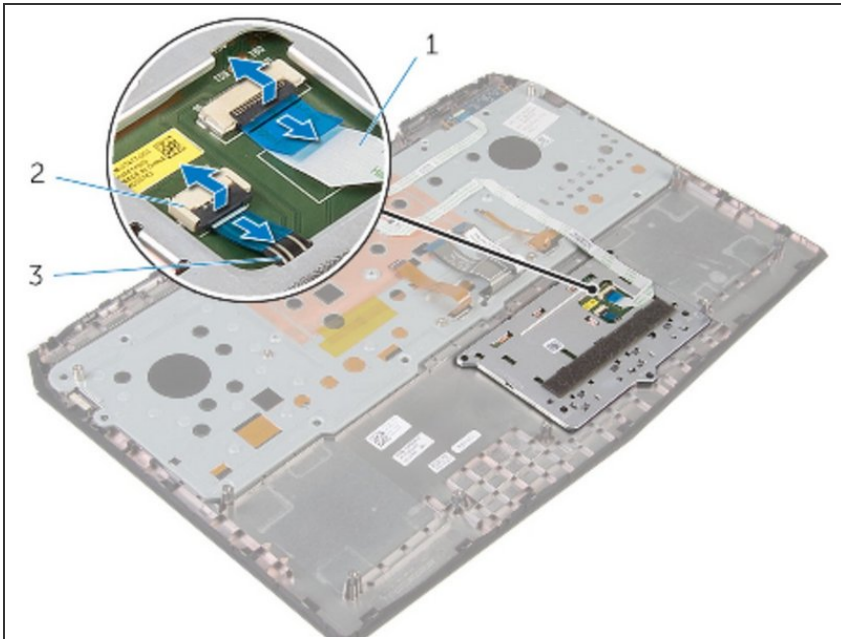
- Remove the status-light board.

Step 12 — Removing the Keyboard.



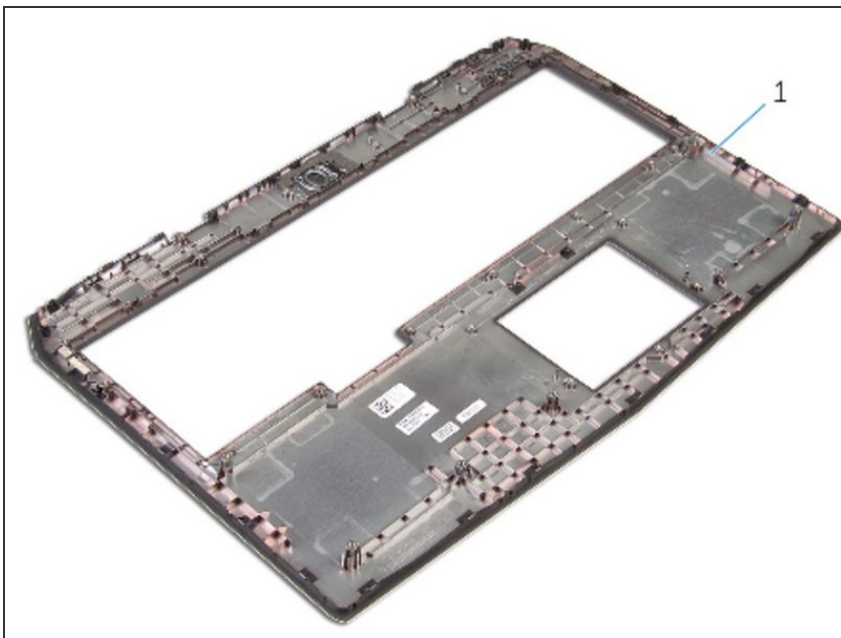
- Remove the keyboard bracket.

Step 13 — Touch Pad Removal



- Remove the touch pad.

Step 14 — Replacing



- Replace the touch pad.
- Replace the keyboard.
- Replace the status-light board.
- Replace the power-button board.

Step 15 — Connecting the Board Cable



- Connect the power-button cable to the system board.

Step 16 — Adhere the Tape



- Adhere the tape that secures the power button cable to the system board.

Step 17 — Sliding the Cables



- Slide the keyboard cable, keyboard-backlight cable, macro-keys cable and macro-keys backlight cable through the slot on the computer base.

Step 18 — Aligning the Palm-Rest



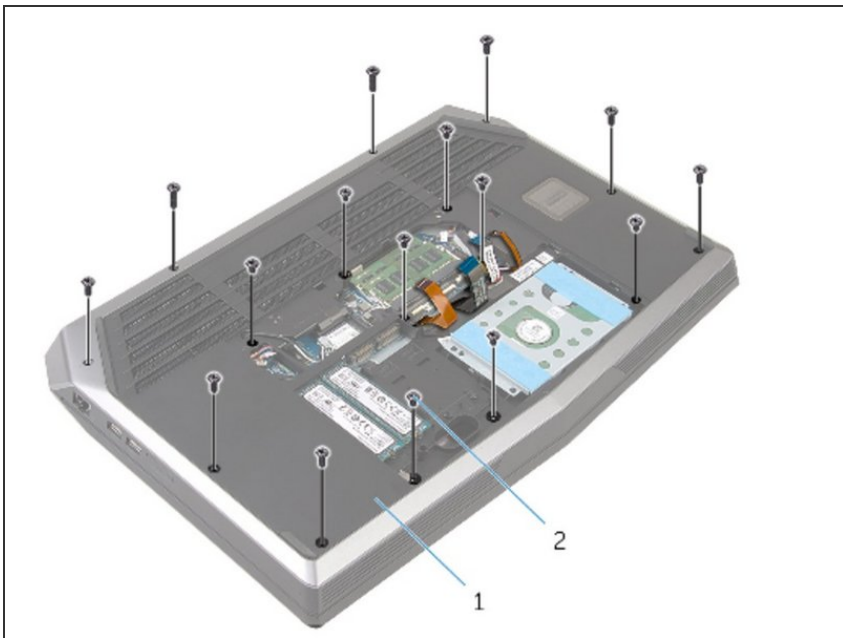
- Align the palm-rest assembly on the computer base and snap it into place.

Step 19 — Turning the Computer



- Close the display and turn the computer over.

Step 20 — Replace the Screws



- Replace the screws that secure the palm-rest assembly to the computer base.

Step 21 — Sliding Cables



- Slide the keyboard cable, keyboard-backlight cable, macro-keys cable and macro-keys backlight cable into their respective connectors and press down the latches to secure the cables to the system board.

To reassemble your device, follow these instructions in reverse order.