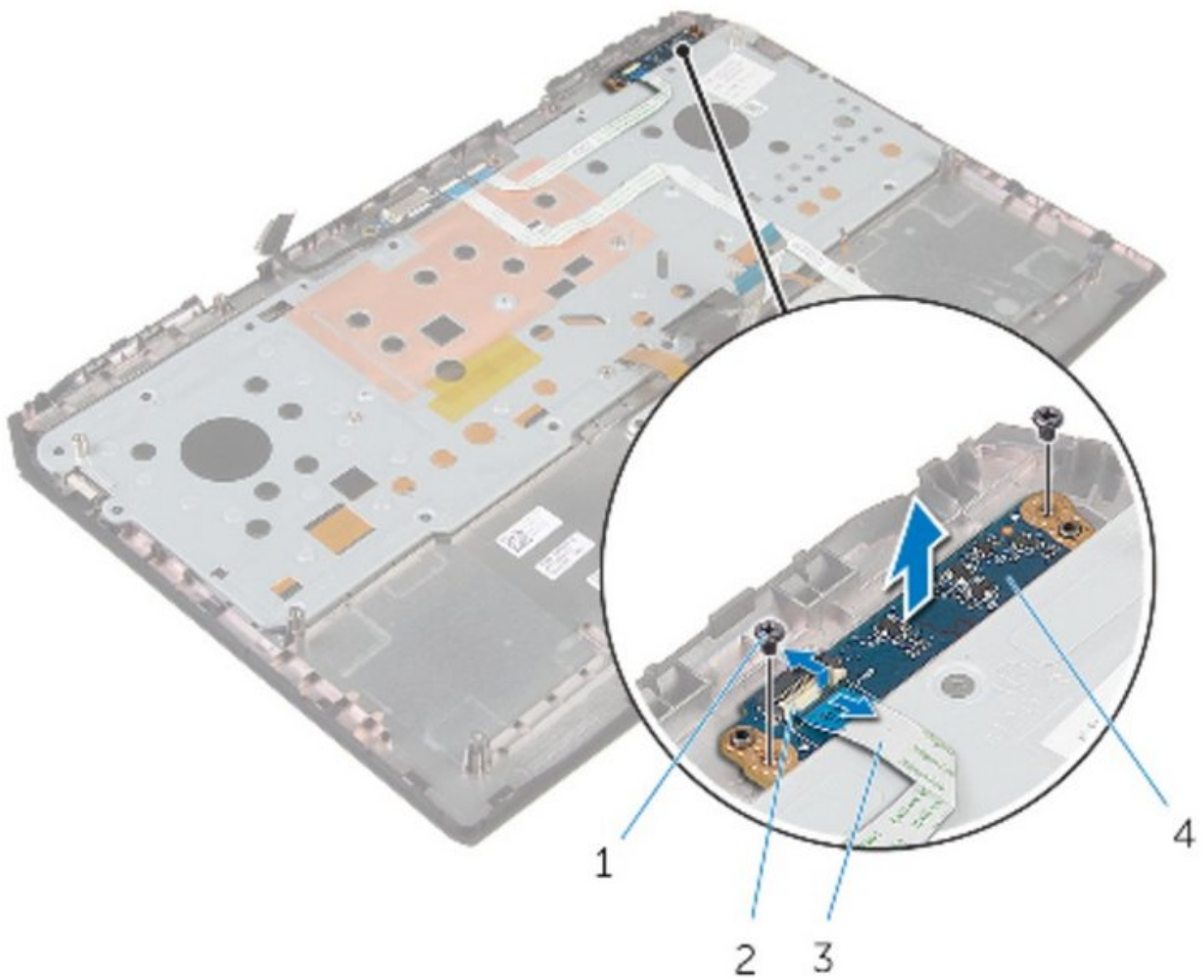




Alienware 17 R2 Status-Light Board Replacement

Written By: Terrence15



 **TOOLS:**

- [Phillips #0 Screwdriver](#) (1)
-

Step 1 — Disconnecting the Status-Light Board



⚠ WARNING : Before working inside your computer, read the safety information that shipped with your computer and follow the steps in [Before Working Inside Your Computer](#). After working inside your computer, follow the instructions in [After Working Inside Your Computer](#).

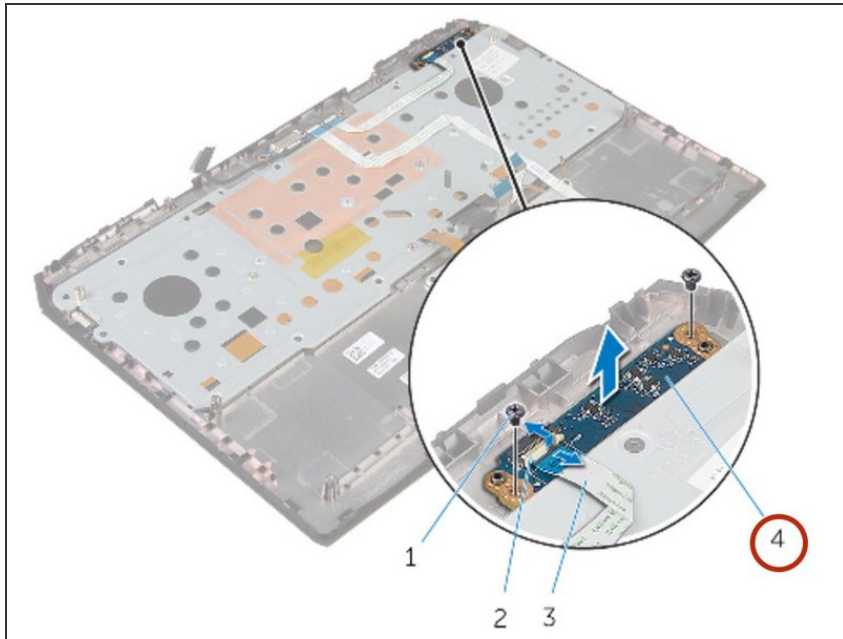
- i** Make sure [base panel](#) is removed.
- i** Make sure [palm rest](#) is removed.
- Lift the latch and disconnect the status-light board to the palm-rest assembly.

Step 2 — Removing the Screws



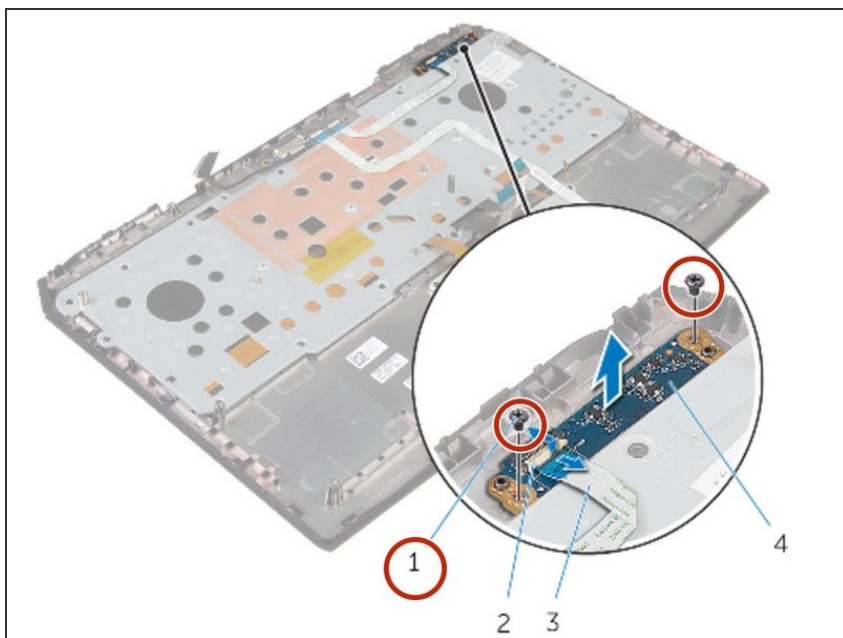
- Remove the screws that secure the status-light board to the palm-rest assembly.

Step 3 — Lifting the Status-Light Board



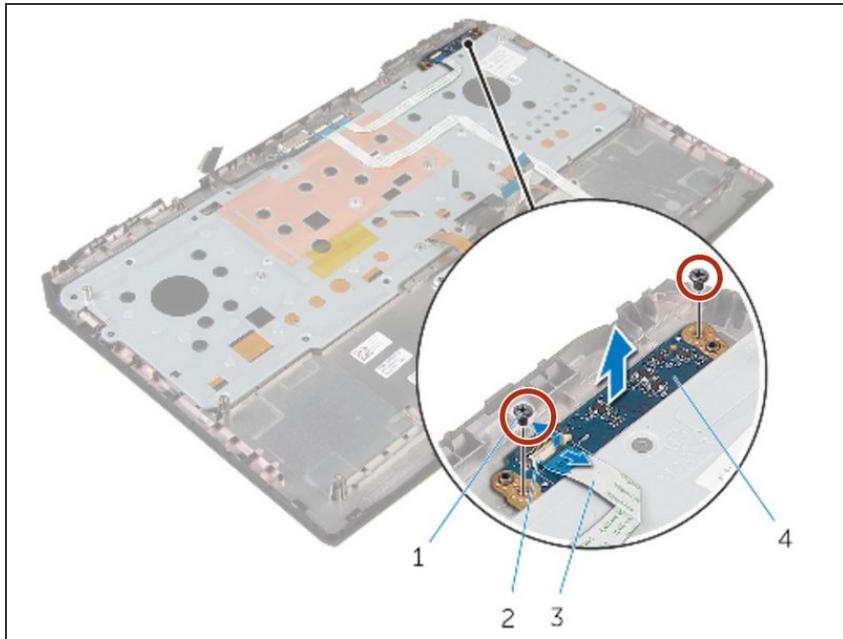
- Lift the status-light board off the palm-rest assembly.

Step 4 — Screw Align



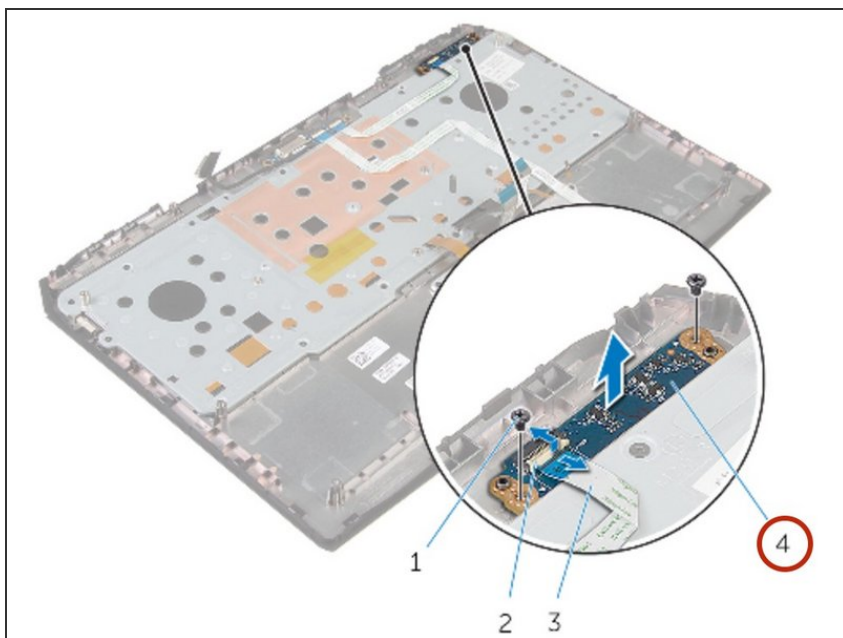
- Align the screw holes on the status-light board with the screw holes on the palm-rest assembly.

Step 5 — Screw Replacement



- Replace the screws that secure the status-light board to the palm-rest assembly.

Step 6 — Sliding the Status-Light Board



- Slide the status-light board cable into the connector on the status-light board and press down the latch to secure the cable.

To reassemble your device, follow these instructions in reverse order.