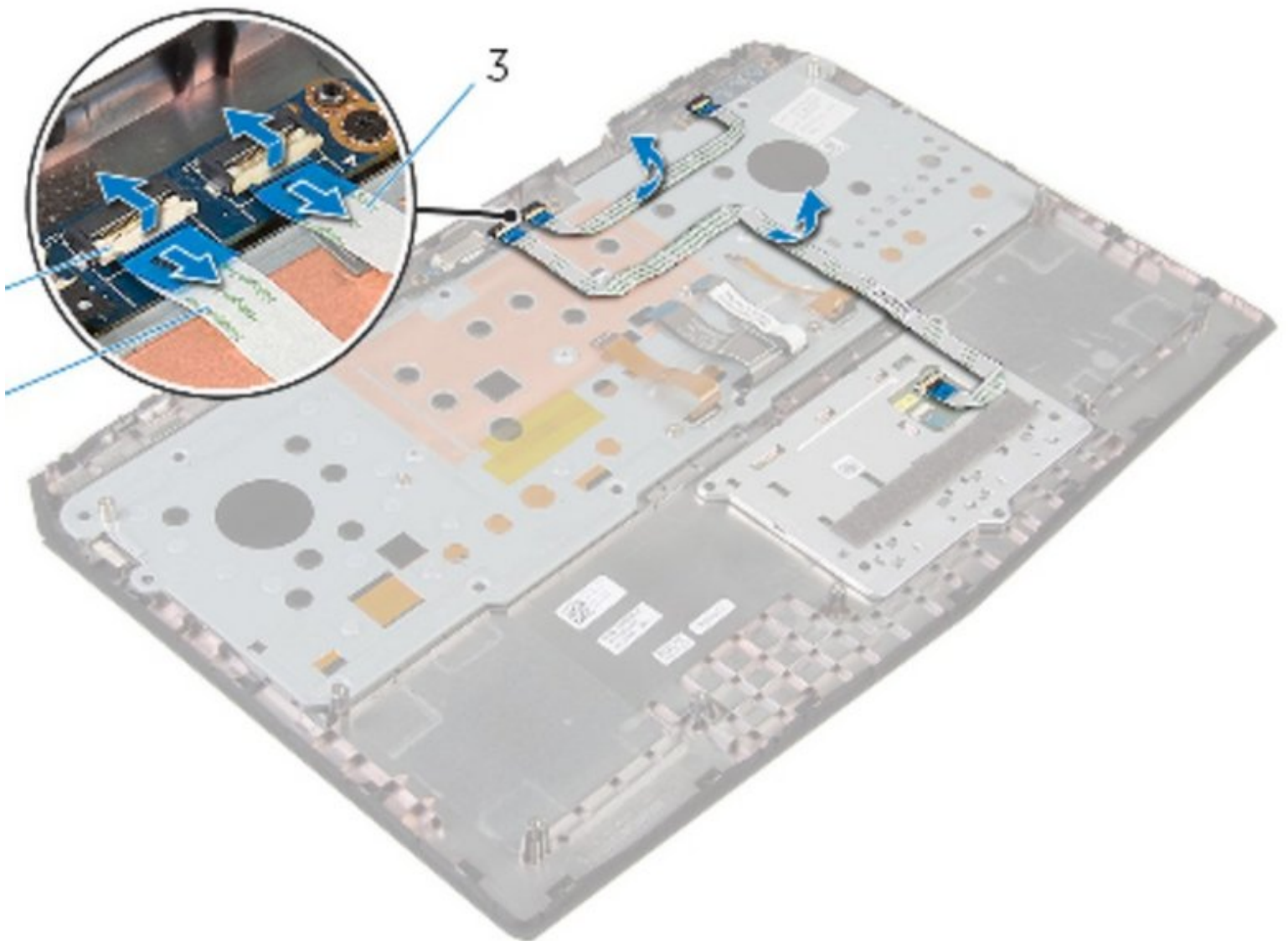




Alienware 17 R2 Keyboard Replacement

In this guide, I will be showing you how to remove and replace the keyboard on your alienware 17 r2

Written By: Terrence15



 **TOOLS:**

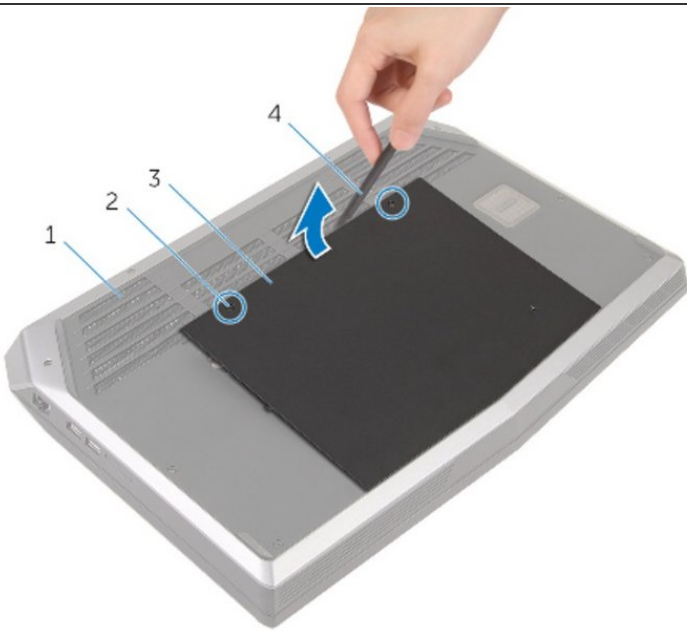
- [Phillips #0 Screwdriver](#) (1)
-

Step 1 — WARNING



⚠ Before working inside your computer, read the safety information that shipped with your computer and follow the steps in [Before Working Inside Your Computer](#). After working inside your computer, follow the instructions in [After Working Inside Your Computer](#).

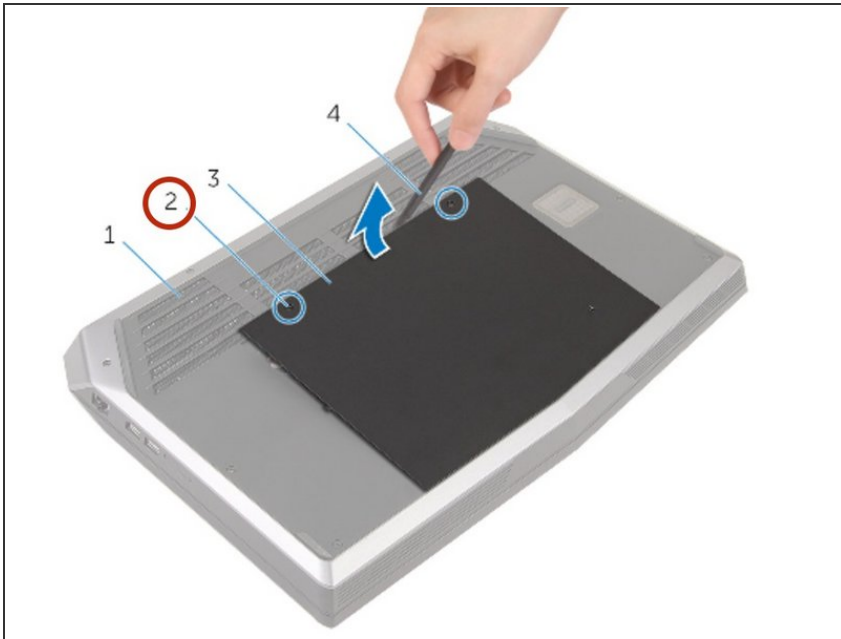
Step 2 — Close the Display



- Close the display and turn the computer over.

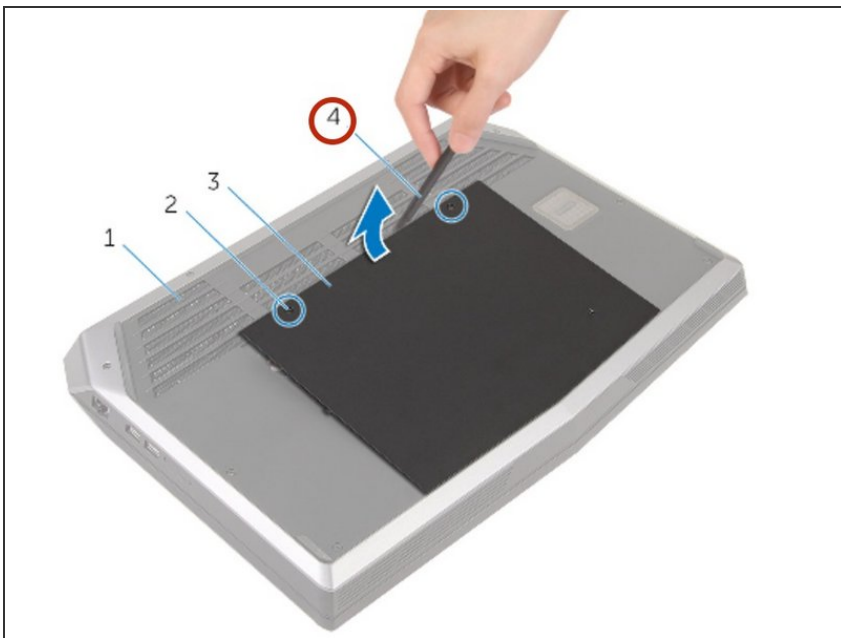
⚠ Make sure PC is turned off!

Step 3 — Loosen Screws



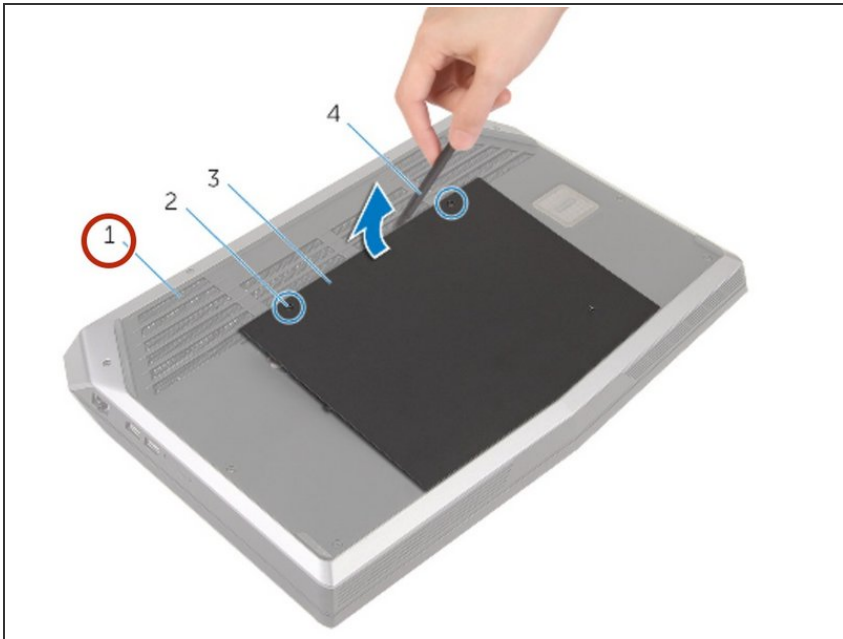
- Loosen the captive screws that secure the base panel to the computer base.

Step 4 — Releasing Tabs



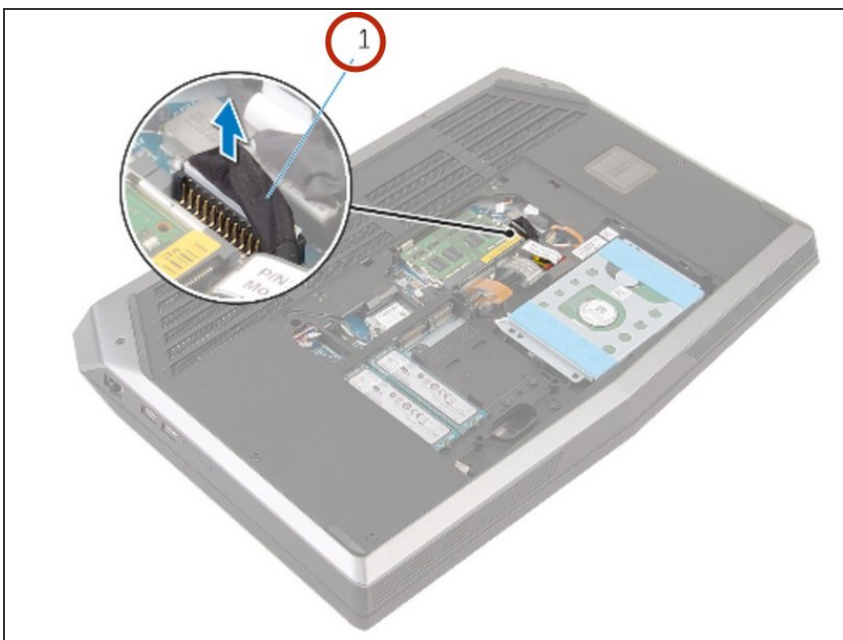
- Using a plastic scribe, gently release the tabs that secure the base panel to the computer base.

Step 5 — Remove Base Panel



- Slide and remove the base panel from the computer base.

Step 6 — Disconnect Battery Cable



- Disconnect the Battery cable from the system board.

Step 7 — Turn PC Over



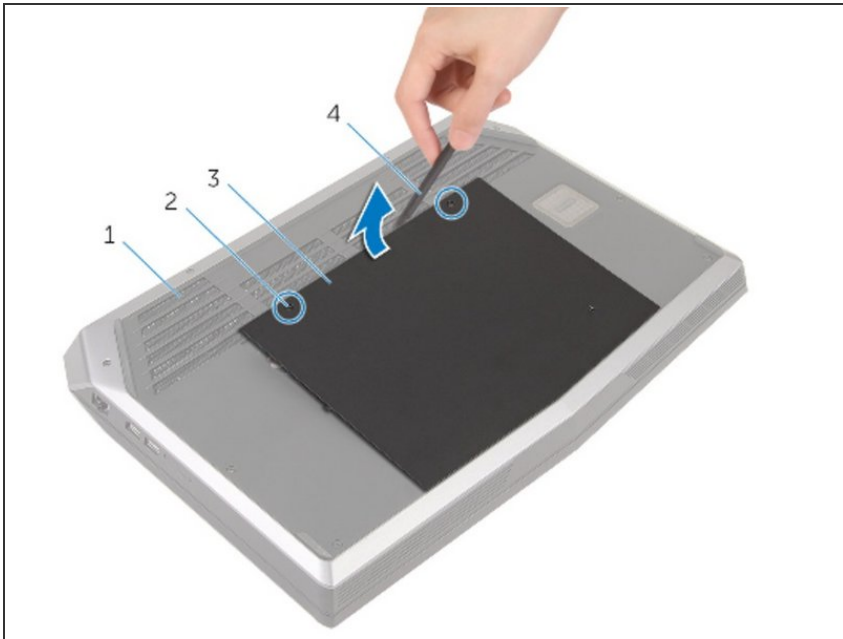
- Turn the computer over.

Step 8 — Power



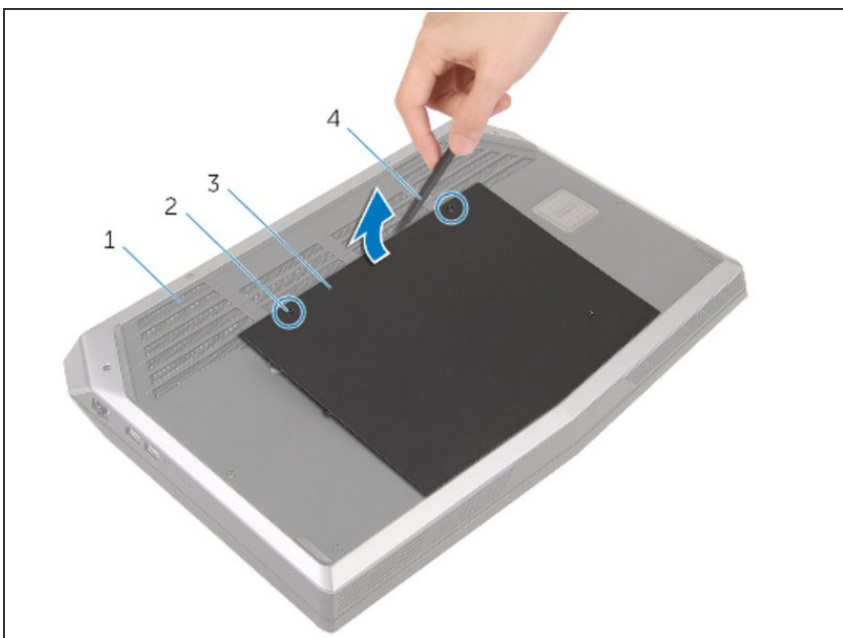
- Press and hold power button for 5 seconds to ground the system board.

Step 9 — Battery Cable



- Connect the battery cable to the system board.

Step 10 — Tighten Screws



- Tighten the captive screws that secure the base panel to the computer base.

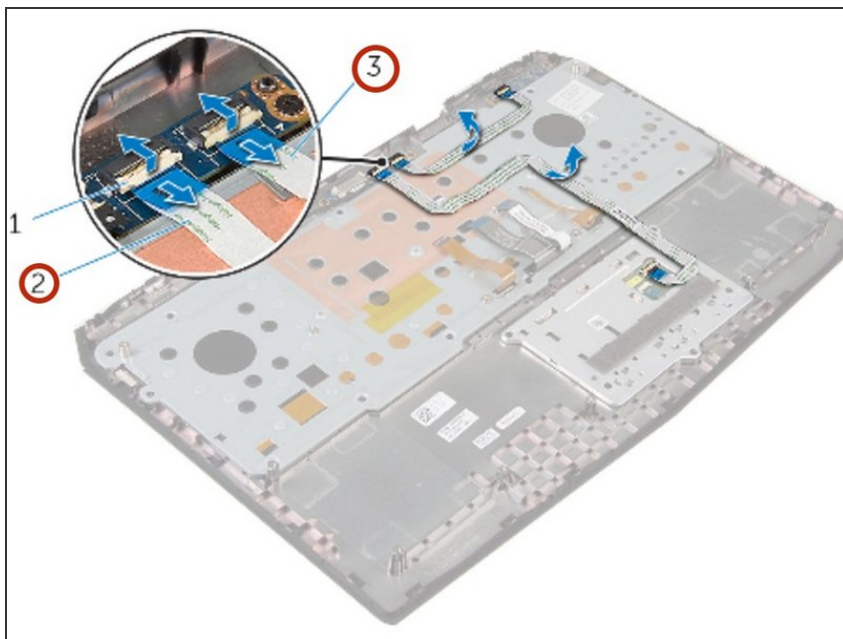
Step 11 — Disconnecting the Touch Pad-Cable



⚠ WARNING : Before working inside your computer, read the safety information that shipped with your computer and follow the steps in [Before Working Inside Your Computer](#). After working inside your computer, follow the instructions in [After Working Inside Your Computer](#).

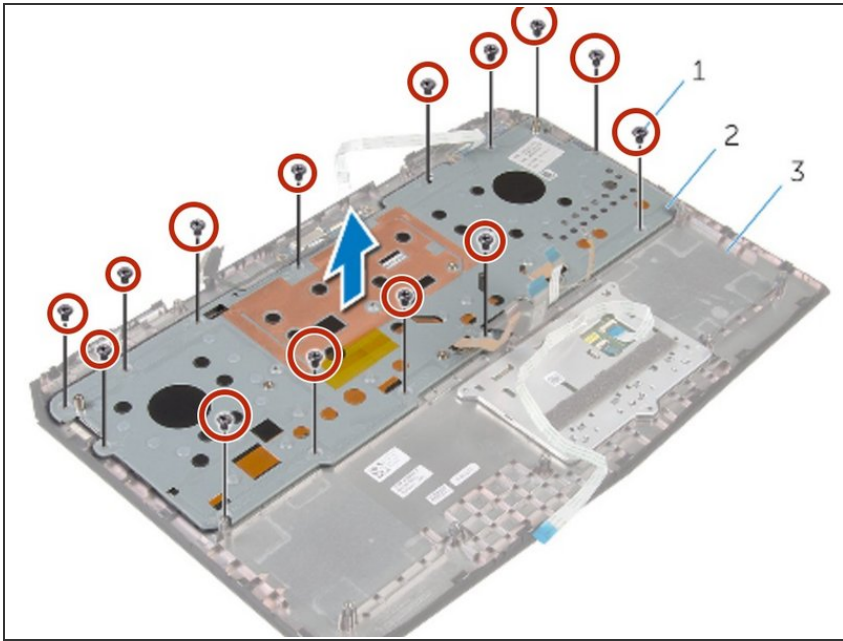
- ① Make sure the [base panel](#) is removed.
- ① Make sure [palm rest](#) is removed.
- Lift the latches and disconnect the touch-pad cable and the status-light cable from the power-button board.

Step 12 — Peel off the Cables



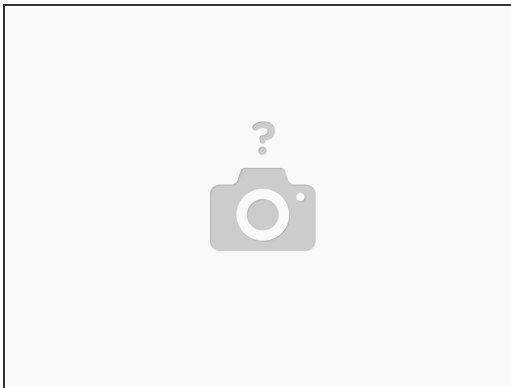
- Note the touch-pad cable and status-light cable routing and peel off the cables from the keyboard bracket.

Step 13 — Screw Removal



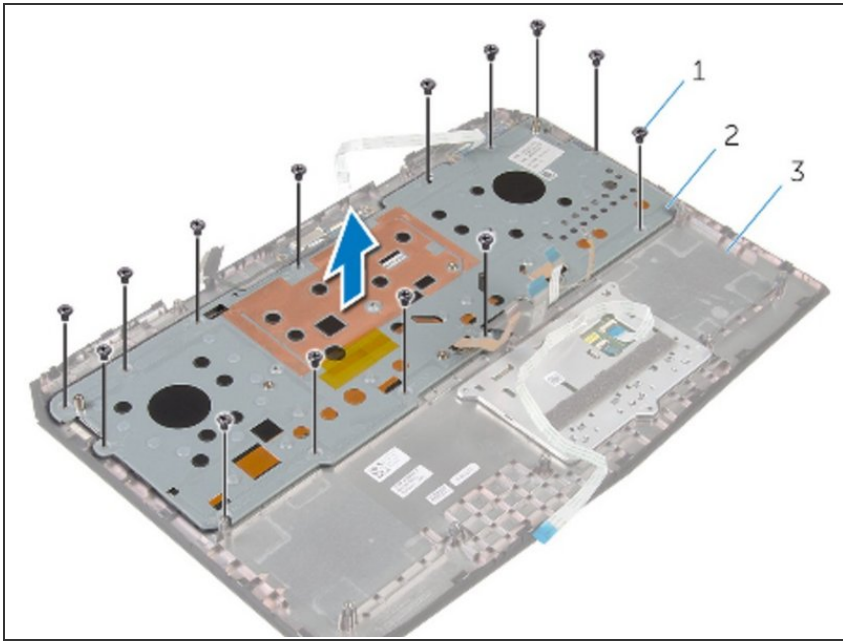
- Remove the screws that secure the keyboard bracket to the palm-rest assembly.

Step 14 — Sliding the Cables



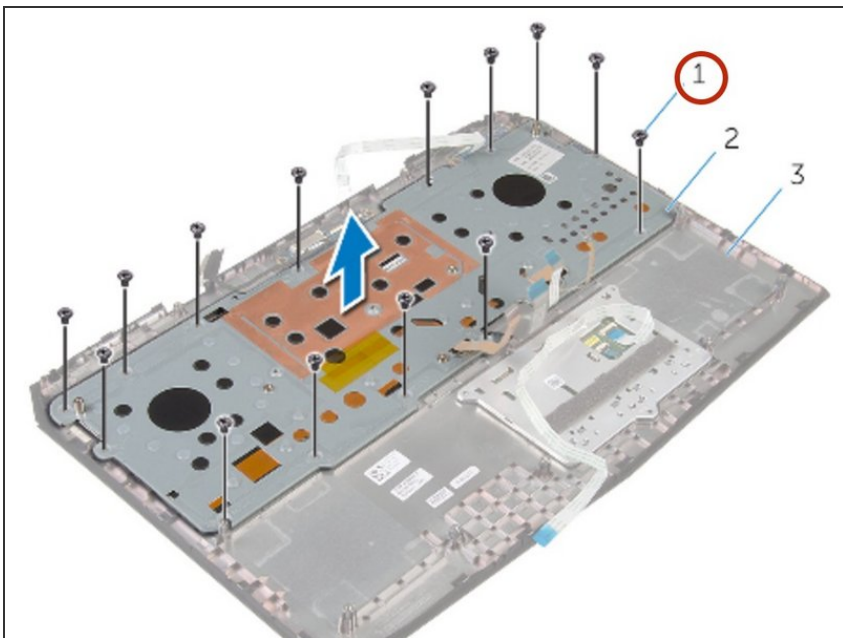
- Slide the keyboard cable, keyboard-backlight cable, macro-keys cable and macro-keys backlight cable through the slot on the keyboard bracket.

Step 15 — Lifting the Keyboard Bracket



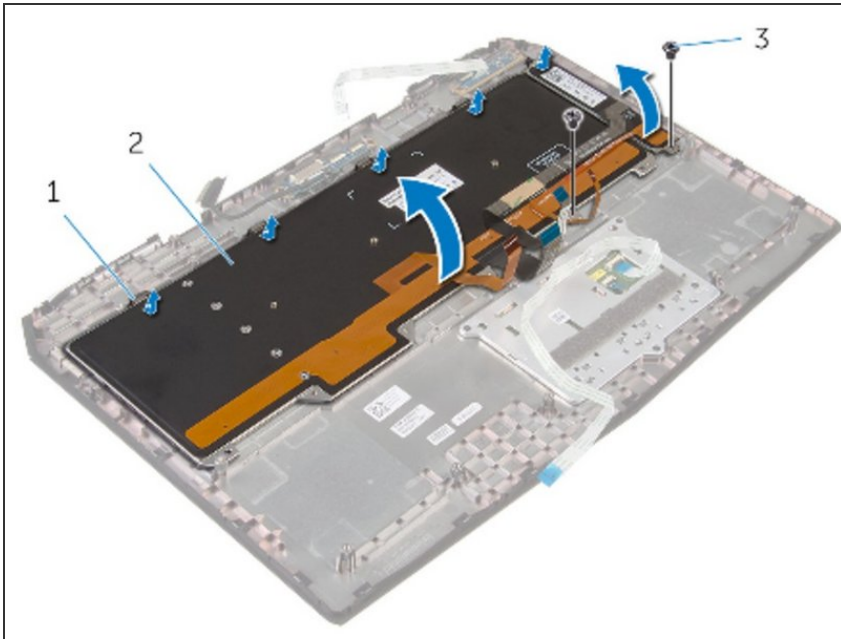
- Lift the keyboard bracket off the palm-rest assembly.

Step 16



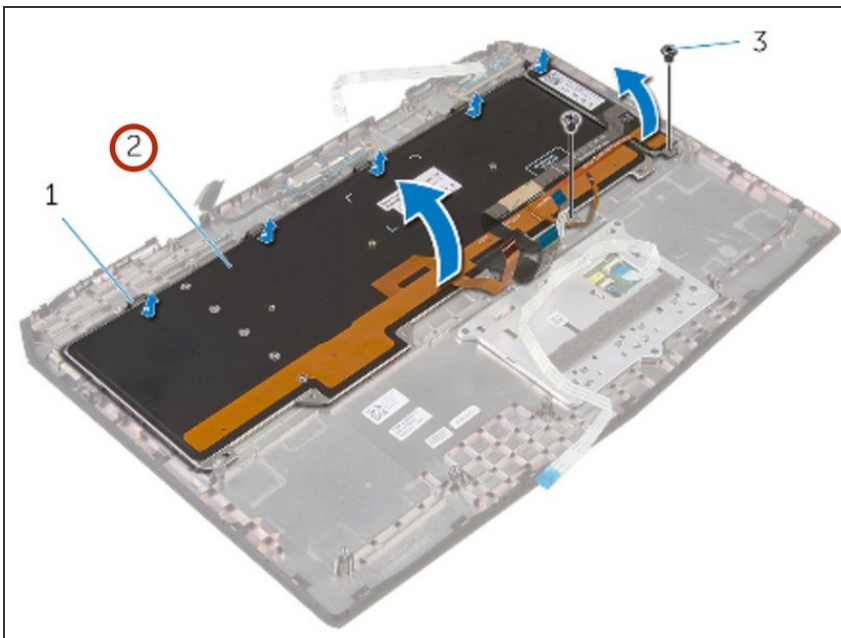
- Remove the screws that secure the keyboard to the palm rest assembly.

Step 17 — Releasing the Tabs



- Release the tabs that secure the keyboard to the palm-rest assembly.

Step 18 — Lifting the Keyboard



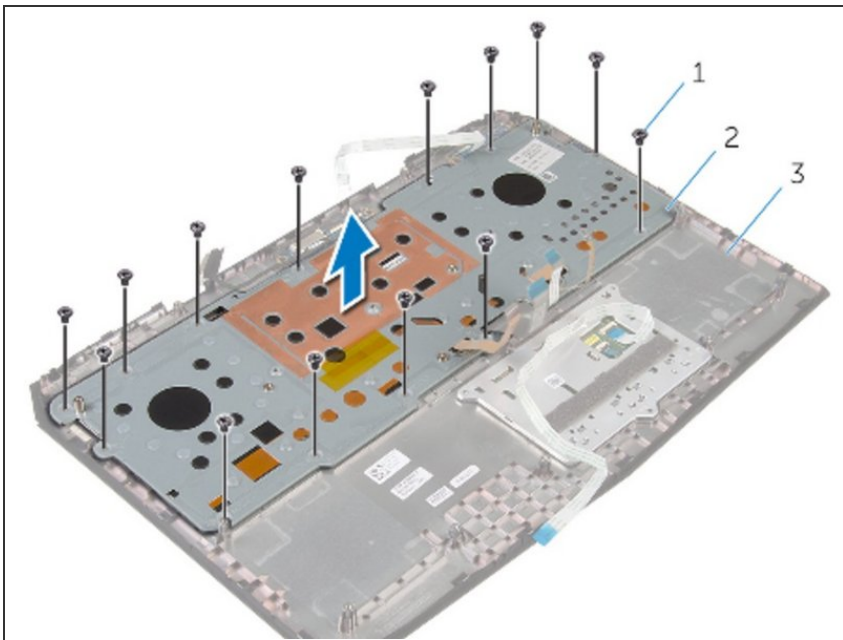
- Slide and lift the keyboard along with the cables off the palm-rest assembly.

Step 19 — Inserting the New Keyboard



- Slide the **new** keyboard under the tabs on the palm-rest assembly.

Step 20 — Screw Alignment



- Align the screw holes on the keyboard with the screw holes on the palm-rest assembly.

Step 21 — Screw Replacement



- Replace the screws that secure the keyboard to the palm-rest assembly.

Step 22 — Routing through the Bracket



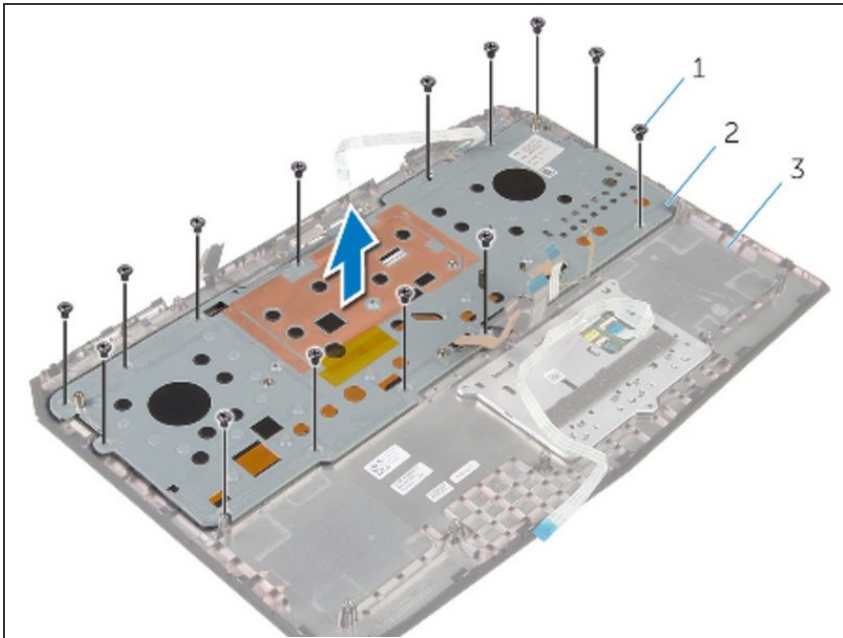
- Route the keyboard cable, keyboard-backlight cable, marco-keys cable and marco-keys backlight cable through the slots on the keyboard bracket.

Step 23 — Screw Alignment



- Align the screw holes on the keyboard bracket with the screw holes on the palm-rest assembly.

Step 24 — Replace the Screws



- Replace the screws that secure the keyboard bracket to the palm-rest assembly.

Step 25 — Adhering the Cable



- Adhere the touch-pad cable and status-light cable to the keyboard bracket.

Step 26 — Securing the Cables



- Slide the touch-pad cable and the status-light cable into their respective connectors on the power-button board and press down the latches to secure the cables.

To reassemble your device, follow these instructions in reverse order.

This document was last generated on 2019-07-27 03:37:15 AM.