



iPad 2 GSM LCD Assembly Replacement

Internal guide for removing LCD before logic board.

Written By: Andrew Optimus Goldheart



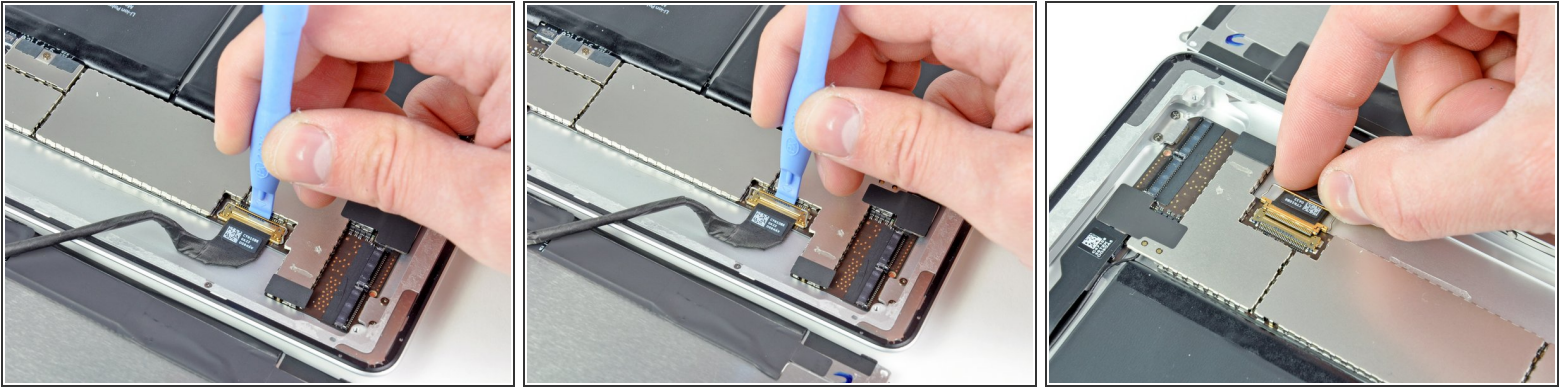
INTRODUCTION

Internal guide for removing LCD before logic board.

TOOLS:

- [iFixit Opening Tools](#) (1)
-

Step 1 — LCD Assembly



- Carefully lay the LCD next to the rear panel.
 - Use a plastic opening tool to lift the display data cable lock upwards.
 - Pull the display data cable out of its socket.
- ⚠ Do not pull the connector upward as you disconnect it from its socket.

Step 2



- Remove the LCD assembly from the rear panel assembly.

To reassemble your device, follow these instructions in reverse order.

