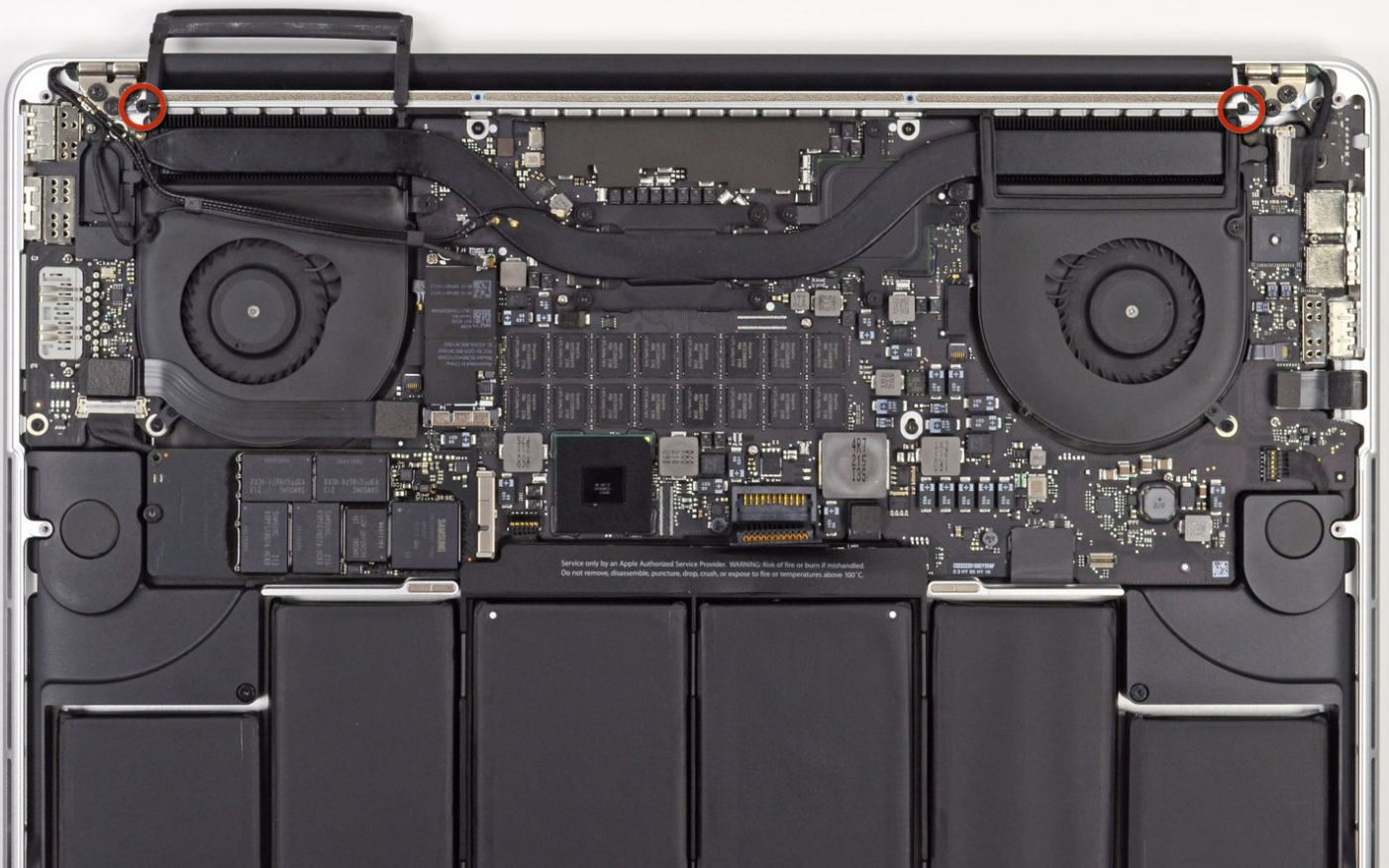




MacBook Pro 15" Retina Display Mid 2012 Display Assembly Screws Replacement

Pre-req for upper case removal

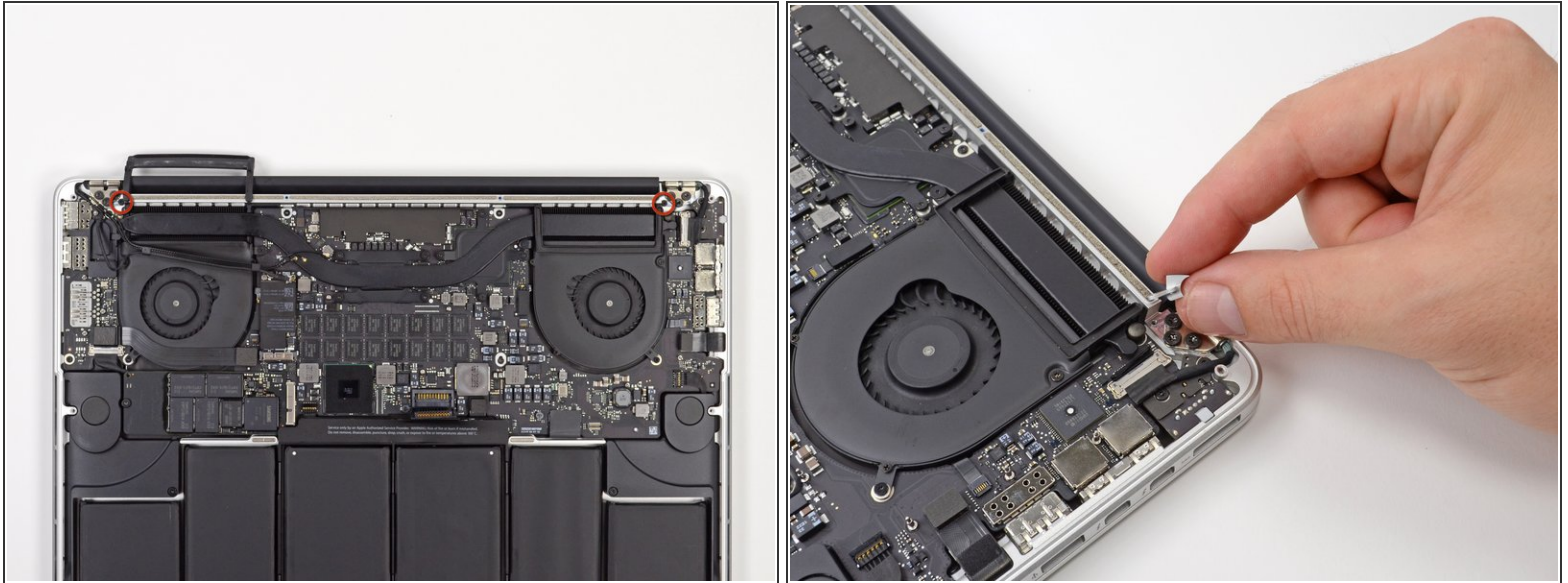
Written By: Jake Devincenzi



 **TOOLS:**

- [T5 Torx Screwdriver](#) (1)

Step 1 — Display Assembly Screws



- Remove the two 3.1 mm T5 Torx screws securing the aluminum hinge covers to the upper case.
- Remove the two aluminum hinge brackets from the MacBook Pro.

To reassemble your device, follow these instructions in reverse order.