



Toshiba Satellite M35X-S149 Battery Replacement

This guide shows how to remove the battery.

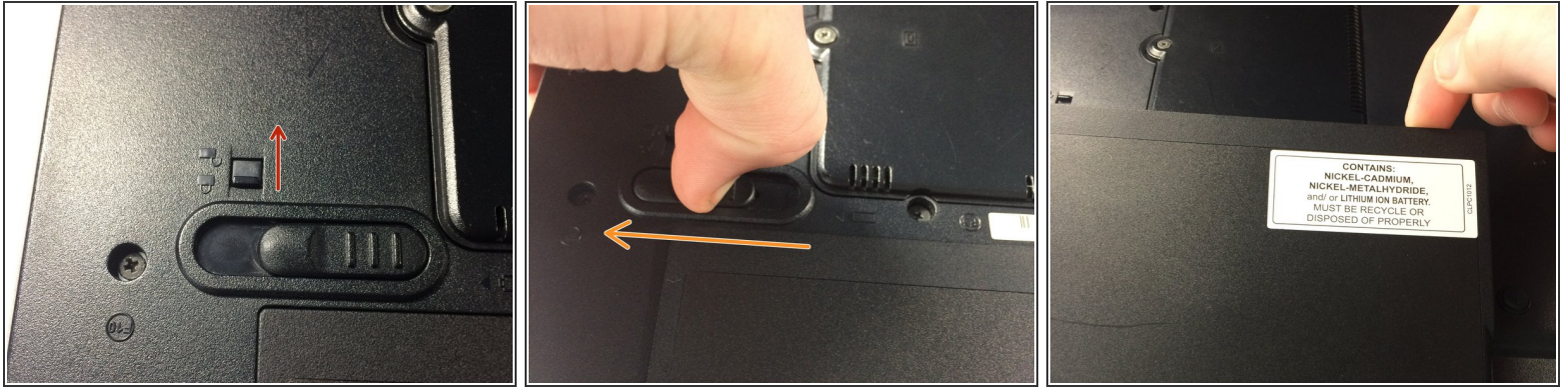
Written By: Aiden Baker



INTRODUCTION

This guide will teach you how to remove the battery

Step 1 — Battery



- Slide the lock slider into the unlocked position.
- Slide the battery release.
- While holding the slider, remove the battery.

To reassemble your device, follow these instructions in reverse order. Please dispose of your battery properly.