



# Kenwood Chef A701A New Feet Replacement

How to put new feet on your Kenwood Chef A701A

Written By: Steven Taylor



 **TOOLS:**

- Large Needle Nose Pliers (1)
- Flathead 3/32" or 2.5 mm Screwdriver (1)
- Spudger (1)

 **PARTS:**

- 5 Feet for Kenwood Chef A701A (bung and brass pin) (1)

## Step 1 — New Feet



- Why put new feet on your Chef?
- It is important for proper airflow and cooling of the motor. The Chef is built to take air in and push it past the motor and out the bottom.
- No feet means the airflow is directed through the case where its not supposed to go.
- This is the consequence. Ewwwwwww! And this was after one vacuum. 40 years of flour from ebay!

## Step 2



- Turn the Kenwood on its side. Best to put a tea towel on your work surface to avoid scratching the side of the chef
- Here you can see the remains of the old foot and pin. Plus some blu-tac used by the previous owner to stabilise things a bit. Plus other grot.

### Step 3



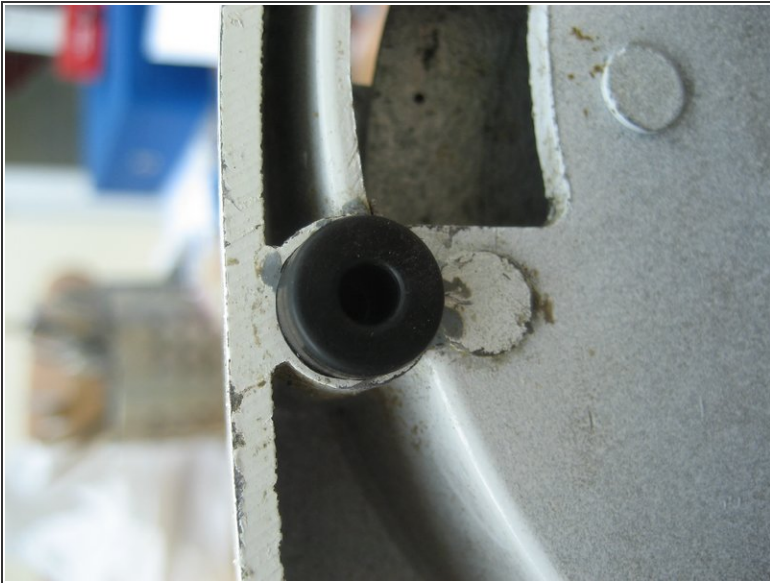
- You'll need to dig away anything plugging the hole with a small sharp knife, or a spudger.
- The aim is to reveal enough of the old pin to get a grip on it with a small pair of needle nose pliers.
- when you've gripped the old pin, turn it anticlockwise- the pin has a clockwise spiral on it.

### Step 4



- Using the end of the pliers or a small screwdriver, once the pin is out, you should be able to prise out the remains of the old bung
- You can see the remains of the old bung and the clear socket in the photos

## Step 5



- Push the new bung in, then push the new pin in the centre.

Nice new feet. Good airflow round the motor. And you won't be filling the innards (which we will clean & repair in another guide) full of flour any more.

This document was last generated on 2019-07-12 01:13:30 PM.