



Netgear Arlo Battery Replacement

Netgear Arlo battery replacement.

Written By: Connor Krampen



INTRODUCTION

A quick and simple guide for replacing batteries in the Netgear Arlo security camera.

TOOLS:

- [Fingers](#) (1)

PARTS:

- [3.7V Rechargeable Li-ion Arlo Battery](#) (4)

Step 1 — Battery



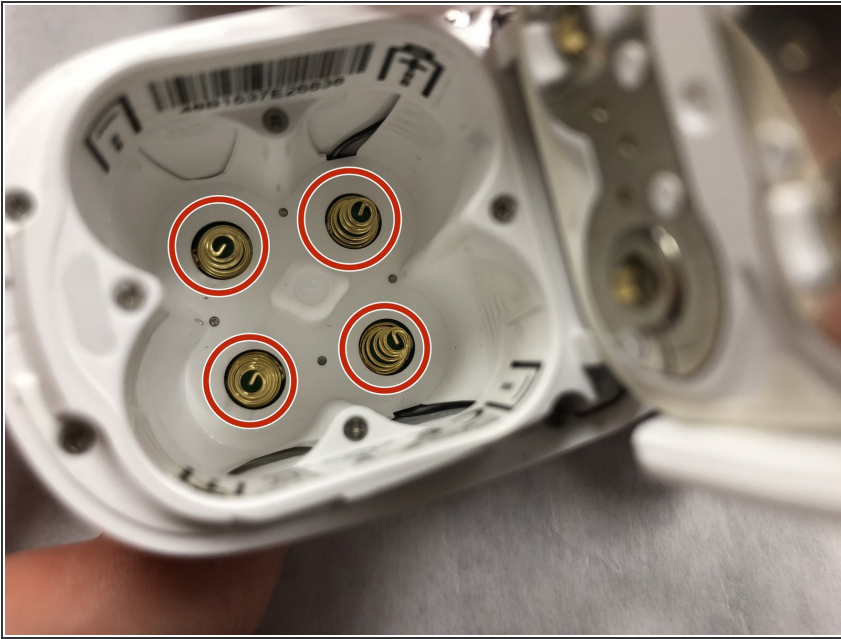
- Locate unlock switch on underside of camera and unlock it by sliding it.
- Once unlocked, slide the cover out and up to open the battery housing.

Step 2



- Remove all 4 of the 3.0 Volt batteries from the battery housing.

Step 3



- Inspect prongs at the bottom of the battery housing to ensure that they are not bent or broken before replacing the batteries.

To reassemble your device, follow these instructions in reverse order.