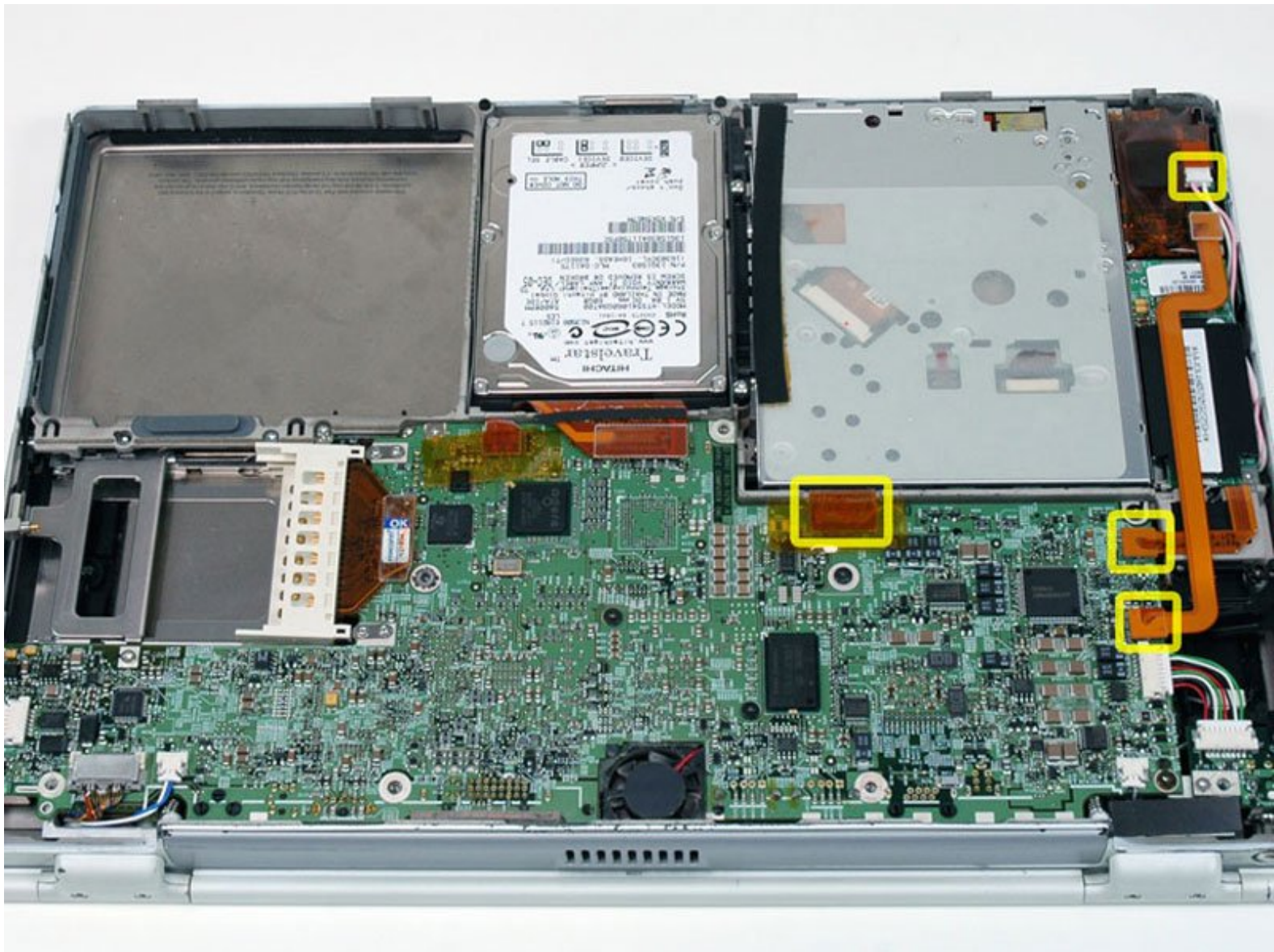




# PowerBook G4 Titanium DVI PRAM Battery Replacement

Written By: iRobot



## INTRODUCTION

The time and date, as well as other settings, are kept by the PRAM battery when your machine is off.

---

### TOOLS:

- [Spudger](#) (1)
- [T8 Torx Screwdriver](#) (1)

### PARTS:

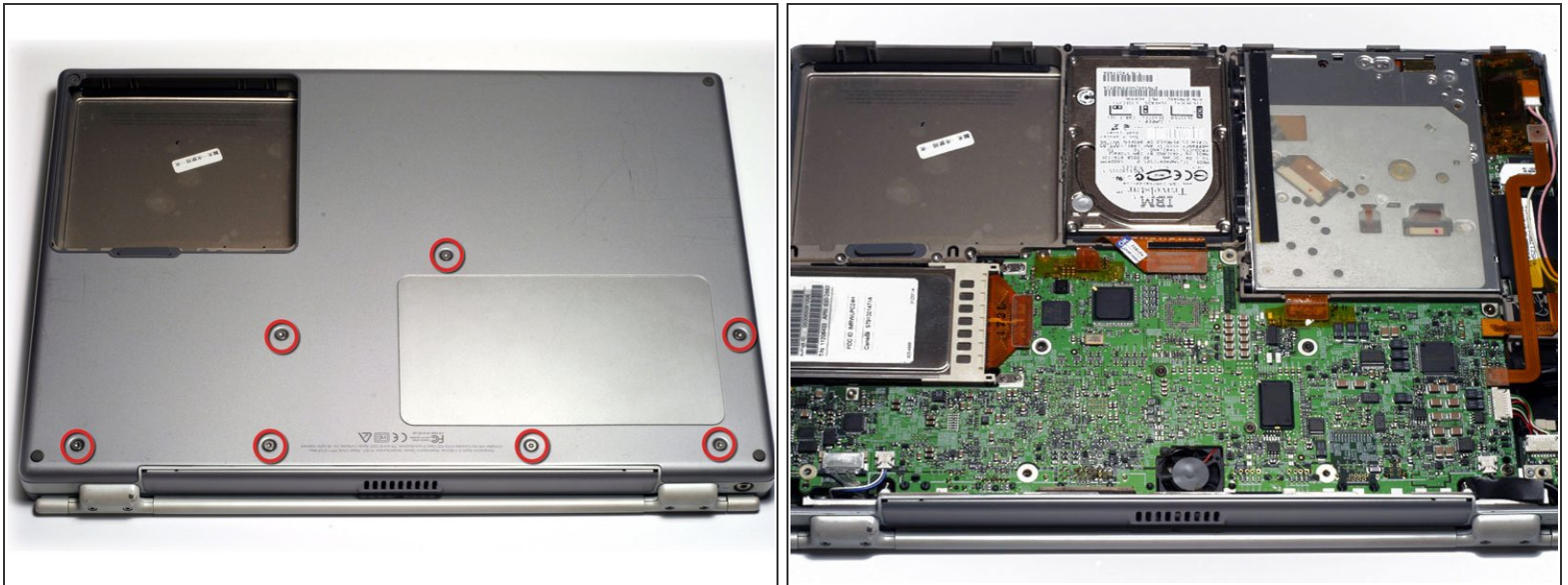
- [G4 Titanium Onyx or DVI PRAM Battery](#) (1)

## Step 1 — Battery



- Locate the battery release tab on the underside of the G4.
- Slide the battery release tab to the left and lift the battery out of the computer.

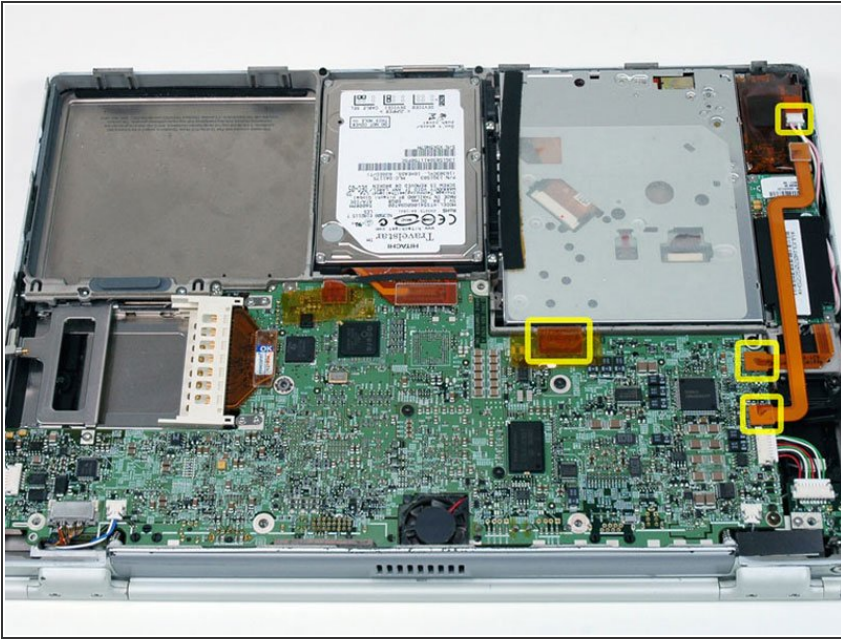
## Step 2 — Lower Case



- Remove the seven T8 Torx screws from the lower case.
- Using your thumbs, slide the lower case toward the front of the computer.
- The lower case may stick in the front on a tab just above the center of the optical drive. Be careful as you work the case off, or you may break the thin strip of plastic just above the drive.
- Lift the lower case off.

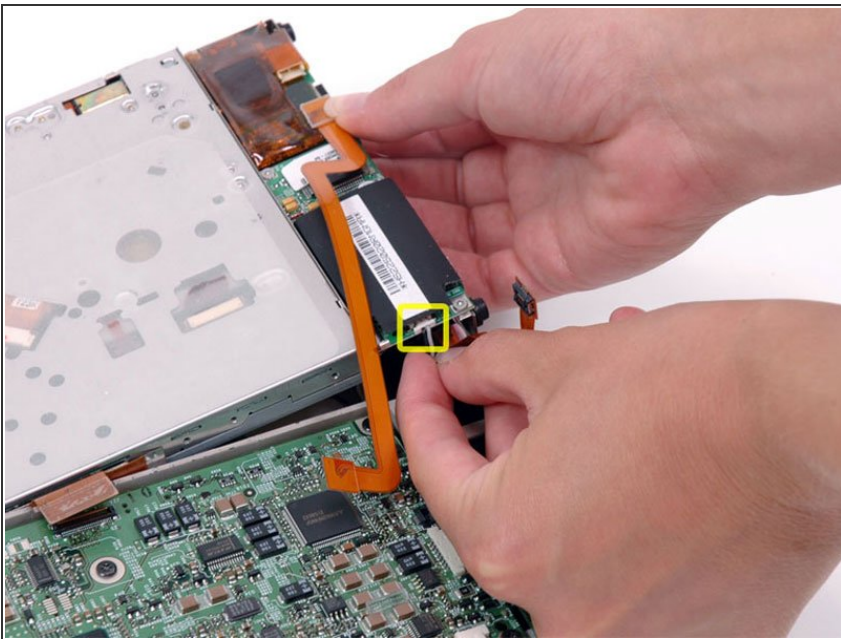


### Step 3 — PRAM Battery



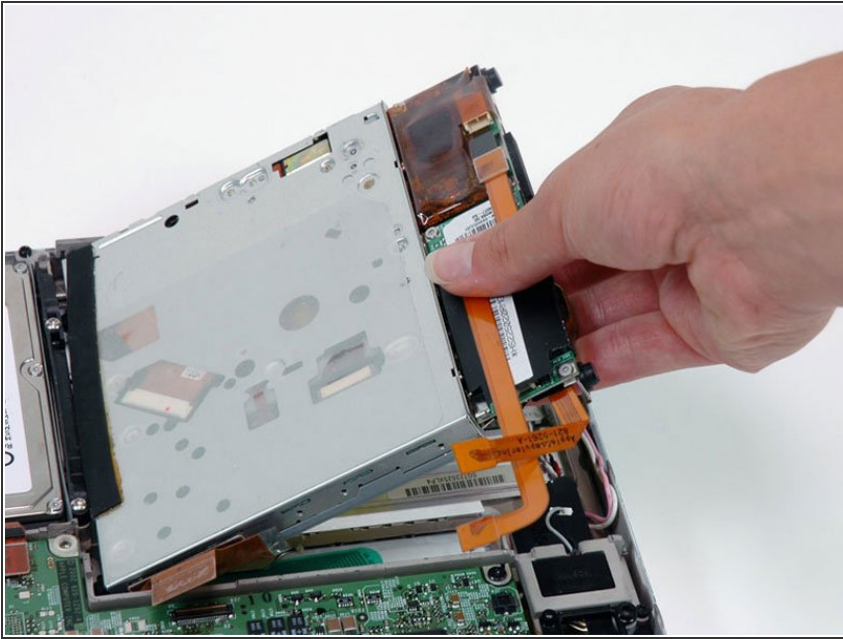
- Disconnect the orange optical drive, modem and inverter cables from the logic board, removing tape as necessary.
- Disconnect the two-wire pink and white inverter cable from the inverter board.

### Step 4



- Lift of the right side of the optical drive and disconnect the modem cable.

## Step 5



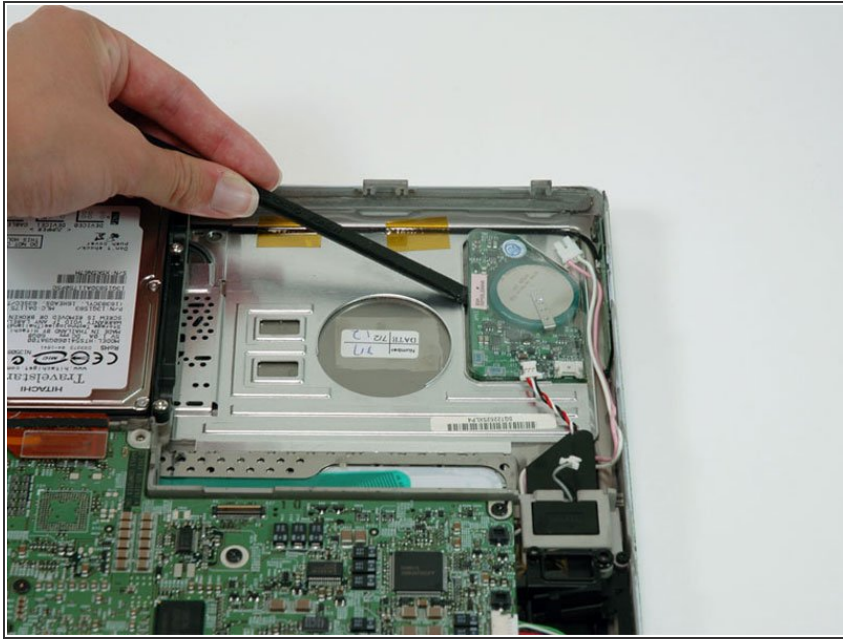
- Lift the optical drive up and out of the computer.

## Step 6



- Disconnect the multicolor cable from the PRAM battery.

## Step 7



- Use a spudger to pry the PRAM battery out of its housing on the upper case. Make sure not to bend the PRAM battery too much while prying it out.

To reassemble your device, follow these instructions in reverse order.

This document was last generated on 2019-07-13 11:34:00 AM.