



# Moto Z Fingerprint Sensor Replacement

How to replace the Moto Z home button or fingerprint sensor.

Written By: Miriam Lam



---

## INTRODUCTION

This guide will teach you how to remove the device's fingerprint sensor.

---

### TOOLS:

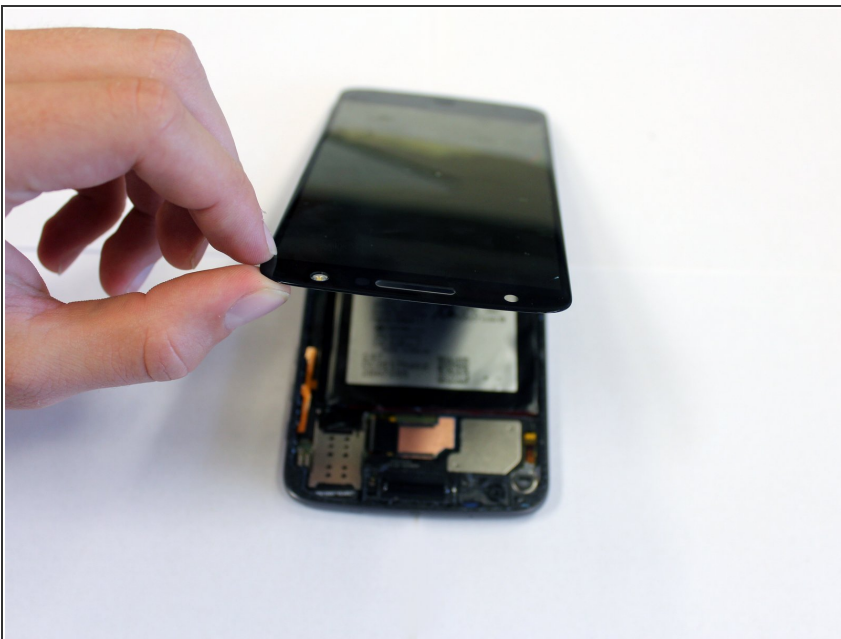
- [iOpener](#) (1)
  - [Suction Handle](#) (1)
  - [iFixit Opening Picks set of 6](#) (1)
  - [Spudger](#) (1)
  - [iFixit Opening Tools](#) (1)
  - [Tweezers](#) (1)
-

## Step 1 — Display



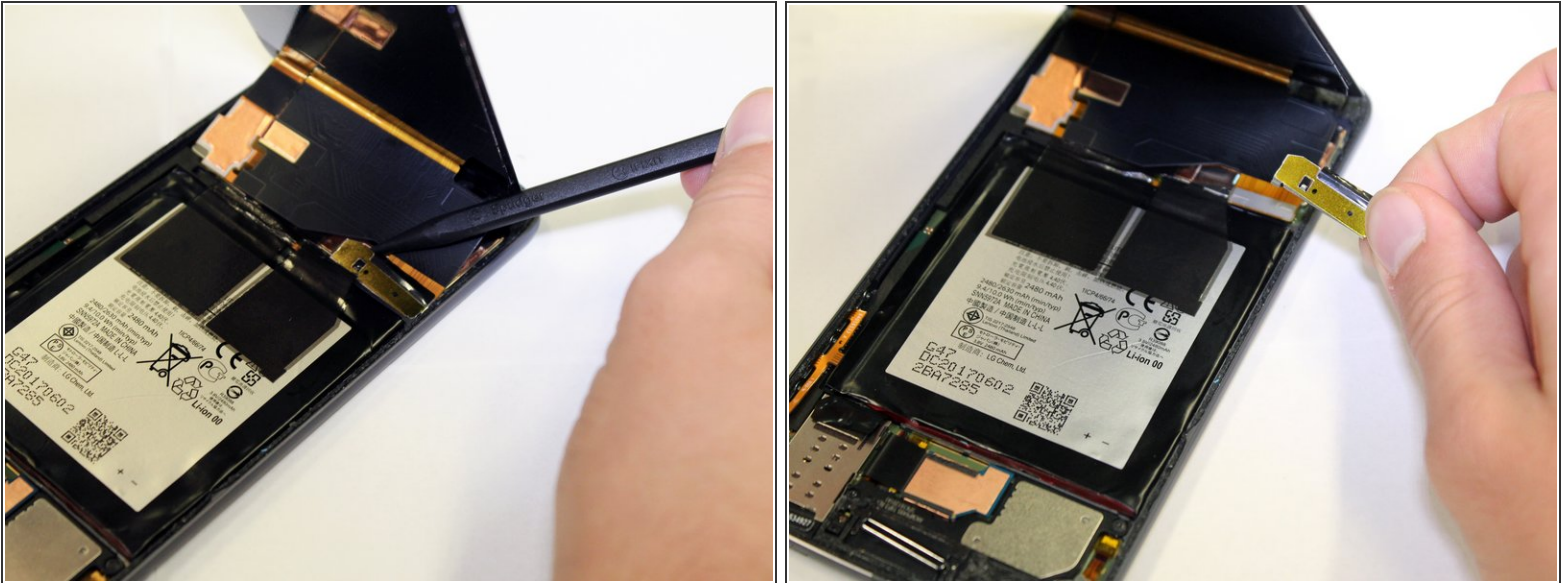
- Position the opening tool under the lid of the screen.
- Slide the opening tool around the edge of the screen to loosen the adhesive.

## Step 2



- Lift the screen off the body from the top.

### Step 3



- To disconnect the screen from the body, stick the spudger under one of the corners of the gold tab.
- Lift up, removing the tab from the device.

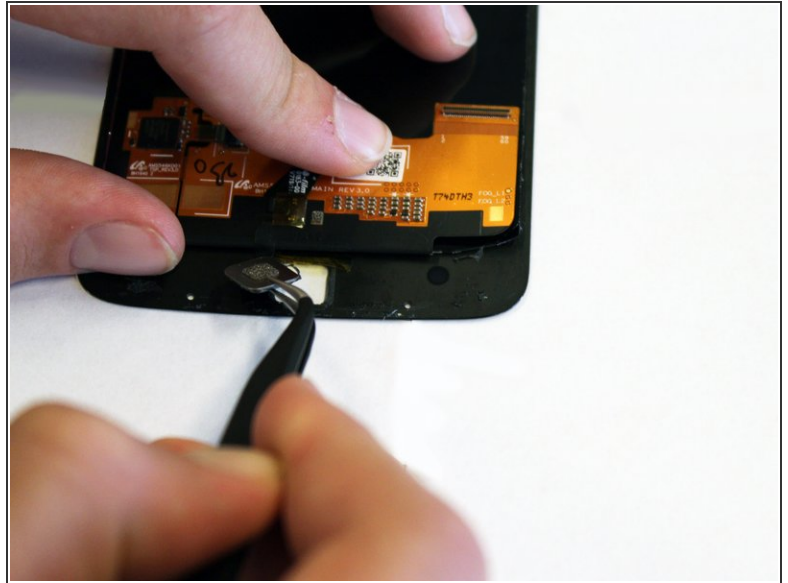
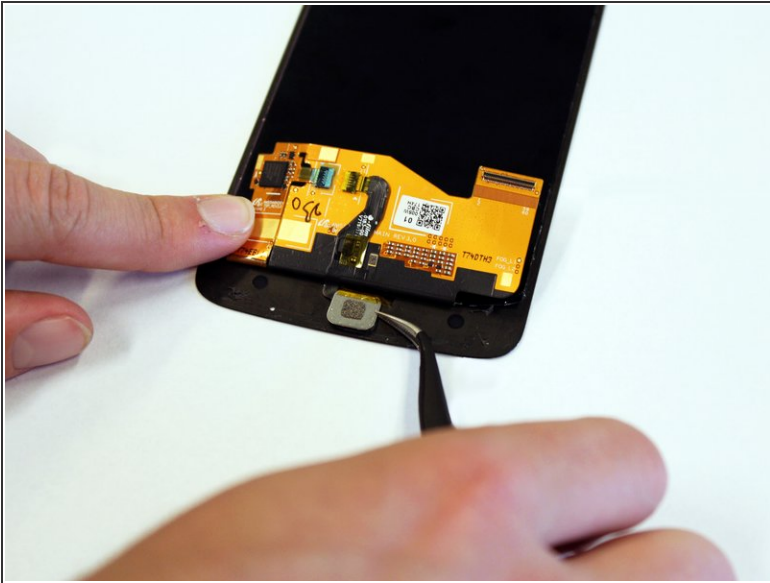
### Step 4



- Pull the screen up to fully remove it.

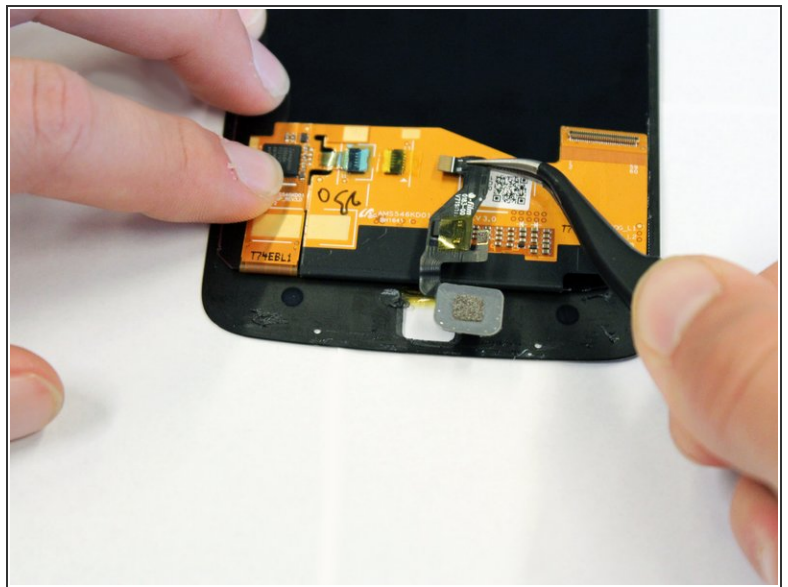
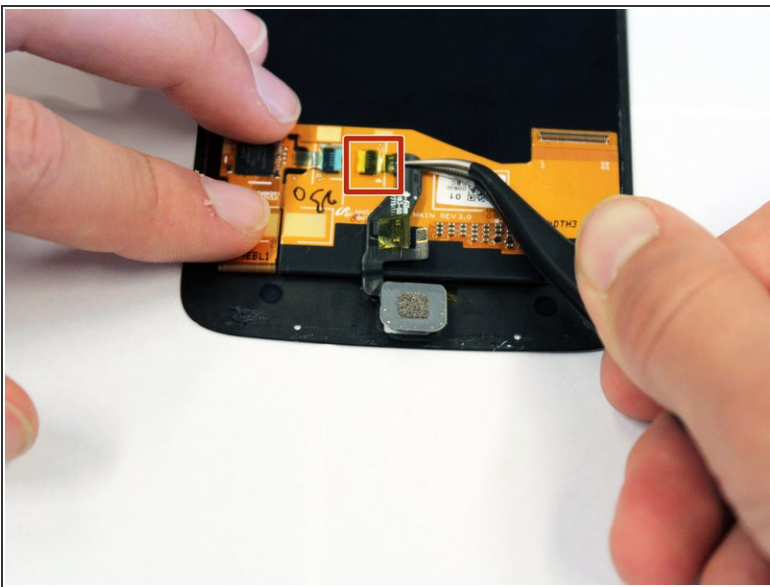


## Step 5 — Fingerprint Sensor



- Insert the tweezers under the metal backing of the sensor.
- Lift up the backing until it is detached from the phone.

## Step 6



- With the tweezers, grab the black connector located just above the fingerprint scanner.
- Pull the connector to the right until it is detached from the phone.

To reassemble your device, follow these instructions in reverse order.

This document was last generated on 2019-07-19 08:16:11 PM.