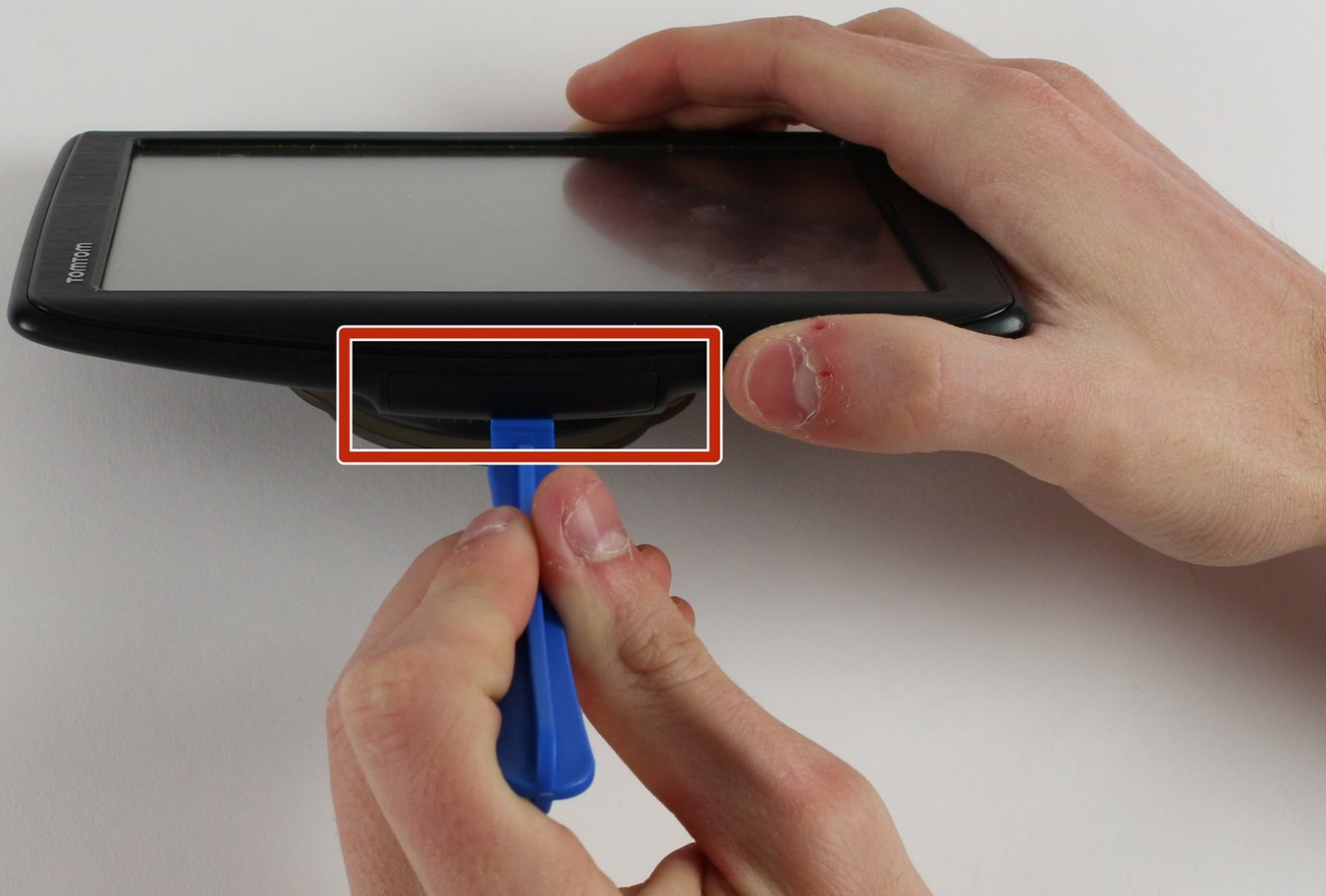




# TomTom VIA 1530 TM Memory Card Replacement

This guide show how to properly remove their TomTom VIA 1530 TM's memory card in order to increase memory capability.

Written By: Jennifer Zakaria



---

## INTRODUCTION

If the user wants to update the mapping system or gain more storage for their TomTom, replacing a full memory card will simply do the trick.

---

### TOOLS:

- [iFixit Opening Tools](#) (1)  
blue opening tool
-

## Step 1 — Memory Card



- Lay the device flat with the screen facing up and the rectangular Memory Card compartment cover visible.
- Wedge the plastic opening tool into a crease of the compartment cover and lift up.
- ⓘ Our device does not have a Memory Card.
- Press gently on the memory card and it will pop out of the device.

To reassemble your device, follow these instructions in reverse order.

This document was last generated on 2019-07-10 09:37:17 AM.