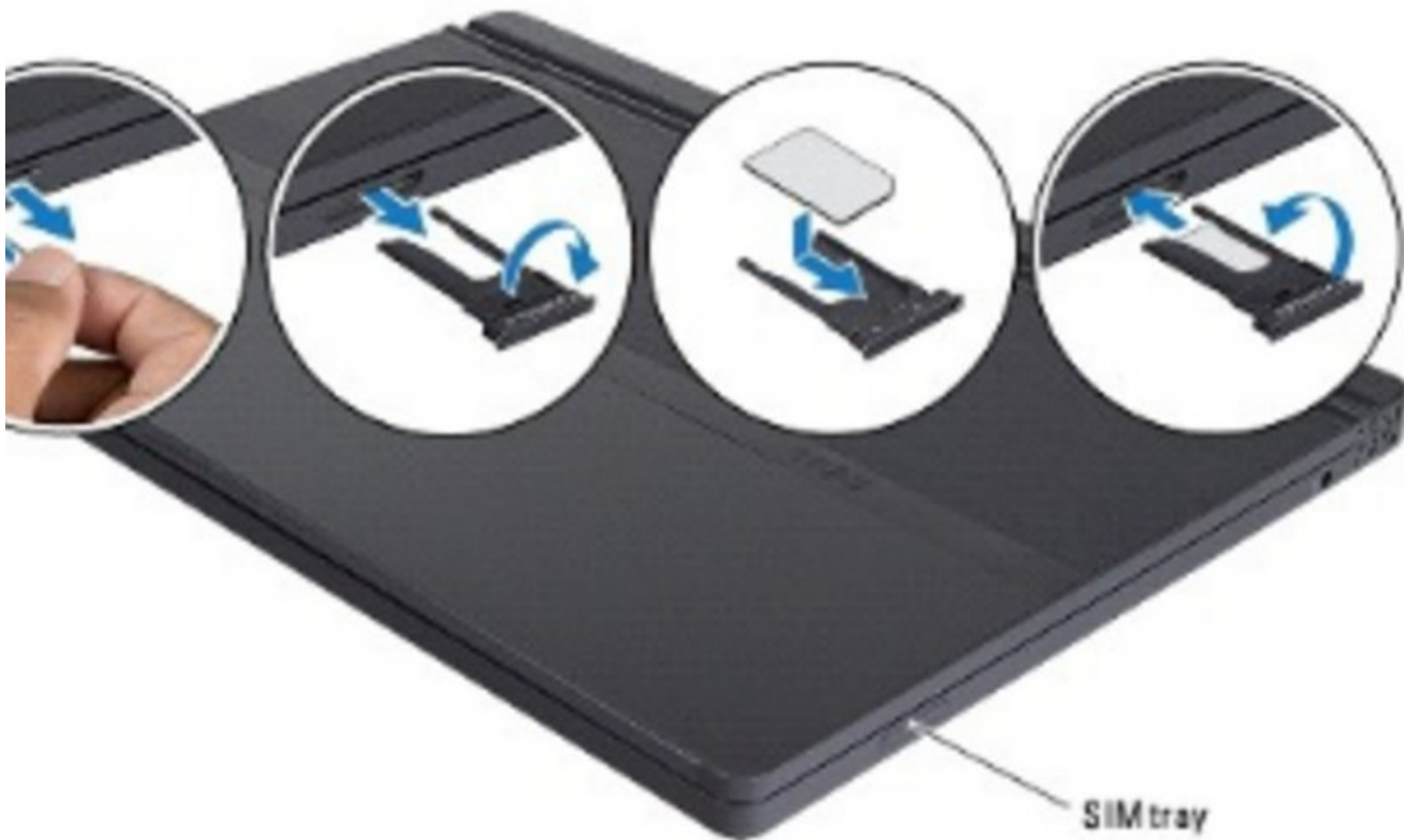




# Dell Adamo SIM Card Replacement

Written By: Terrence15



---

## INTRODUCTION

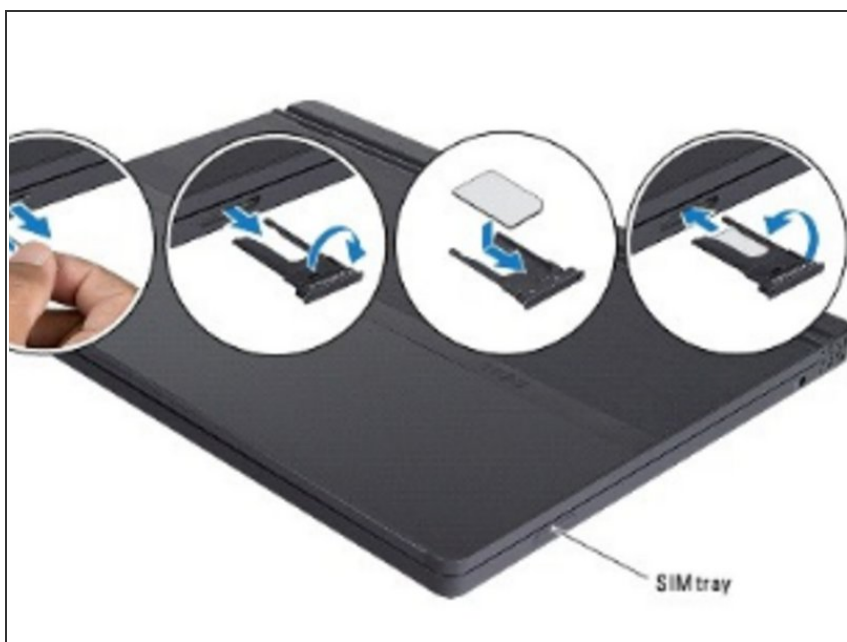
In this lesson, we will be showing how to insert a SIM card.

---

### TOOLS:

- [SIM Card Eject Tool](#) (1)
-

## Step 1 — Popping out the Tray

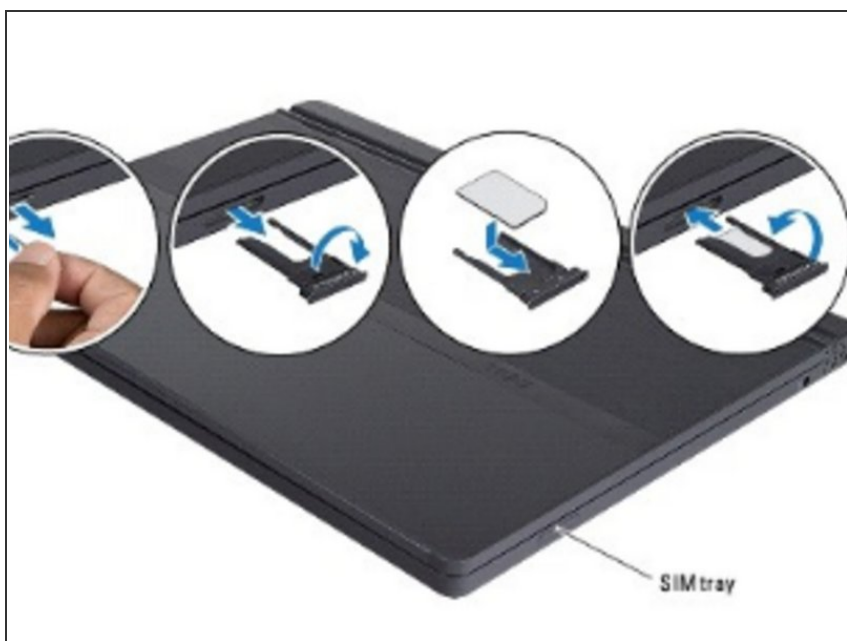


**⚠ CAUTION:** Only a certified service technician should perform repairs on your computer. Damage due to servicing that is not authorized by Dell is not covered by your warranty.

- Insert a needle, paper clip, or a long thumb tack into the hole on the SIM tray. Press firmly and push it straight in until the tray pops out.

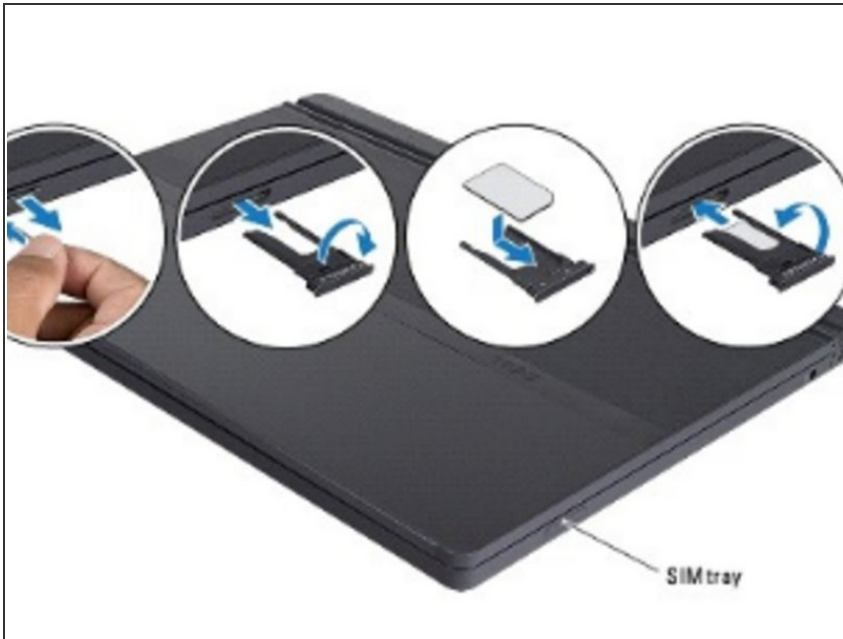
**⚠ CAUTION:** The SIM tray is fragile. Handle it with care to avoid damaging it.

## Step 2 — Aligning the SIM Card



- Turn over the SIM tray.
- Align the angled corner of the SIM card with the angled corner in the tray and place the card. If the card does not fit in the tray easily, check to ensure that you have aligned the corner on the card with the corner on the tray.

## Step 3 — Replacement



- Turn over the SIM tray and replace it into the slot.

To reassemble your device, follow these instructions in reverse order.