



# Logitech G910 Volume Control Wheel Replacement

This guide will show how to replace the volume control wheel in your Logitech G910 keyboard.

Written By: Sulamita Martynenko



---

## INTRODUCTION

Use this guide to replace the volume control wheel in your device. You won't be needing any special skills for this guide.

---

### TOOLS:

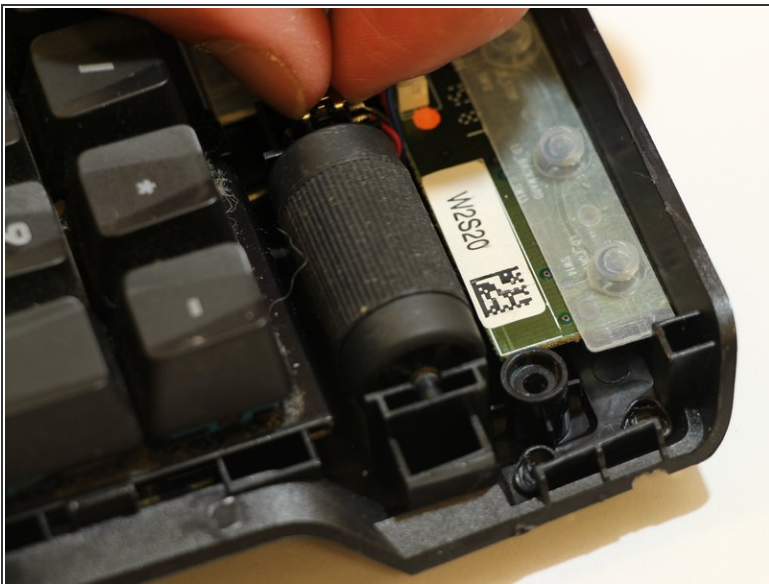
- [Phillips #0 Screwdriver](#) (1)
  - [Metal Spudger](#) (1)
-

## Step 1 — Volume control wheel



- Push the metal spudger underneath the two layers of the keyboard. Using your hand to add pressure, push it downward revolving it to open.

## Step 2



- Using your fingers, gently remove the volume control wheel from the device.

To reassemble your device, follow these instructions in reverse order.