



Gateway NE51006u Battery Replacement

Replace the battery for the Gateway NE51006u.

Written By: Omer Tunagur



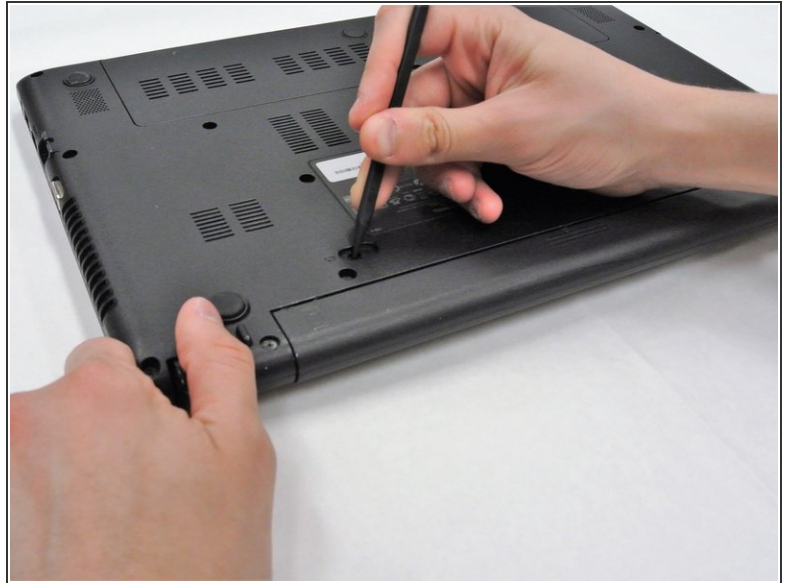
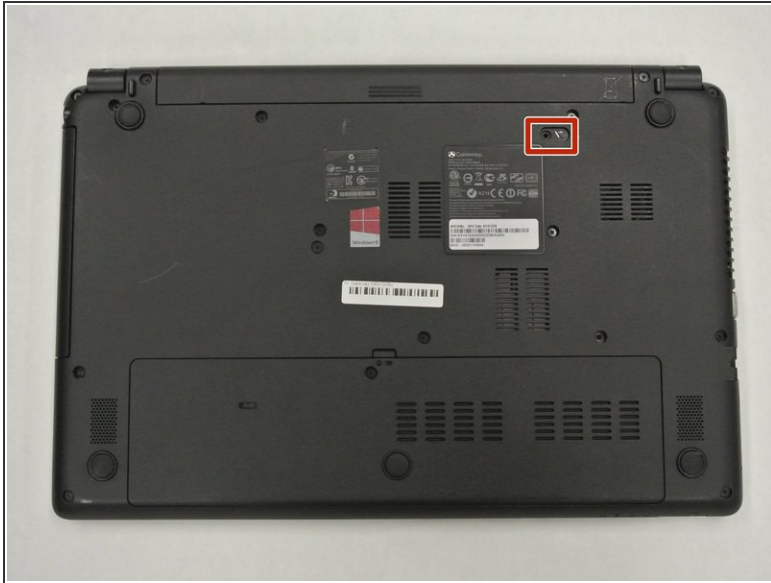
INTRODUCTION

Use this guide to replace the 4-cell Lithium Ion 2500 mAh battery for your Gateway NE51006u.

TOOLS:

- [Spudger](#) (1)
-

Step 1 — Battery



i Make sure your device is powered off before beginning this guide.

- Place your device on your workspace, screen facing down. Take the Spudger and use the pointed end to catch the latch below the battery. Drag the latch to the right until the battery detaches from the body of the device.

Step 2



- Pull the battery out, making sure to pull the battery parallel to the device.

To reassemble your device, follow these instructions in reverse order.