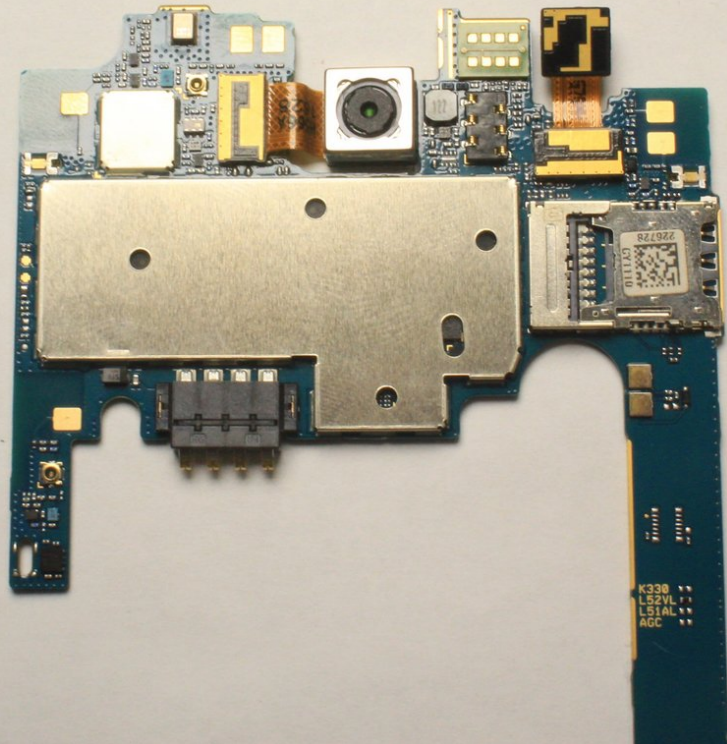




LG Treasure Rear Camera Replacement

Replacing the rear facing camera on the LG Treasure.

Written By: david amirahmadi



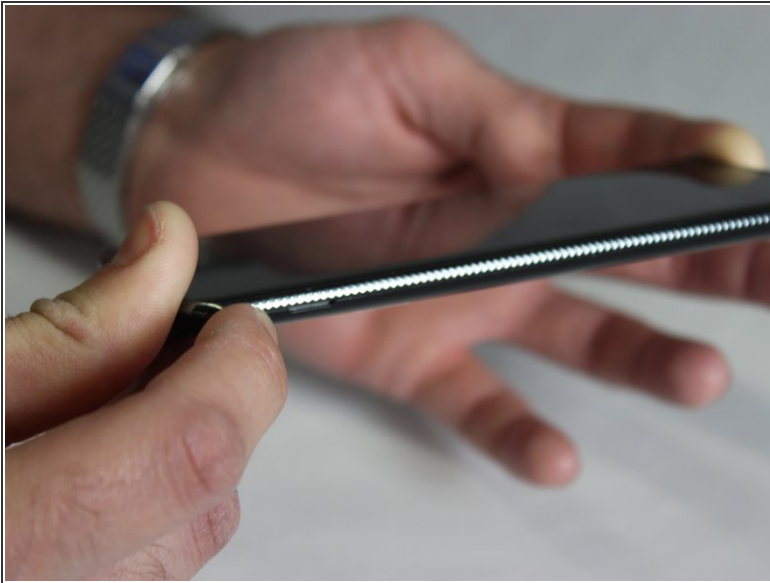
INTRODUCTION

This guide will explain how to replace the rear camera on the LG Treasure.

TOOLS:

- [Phillips #000 Screwdriver](#) (1)
-

Step 1 — Battery



- ⓘ Make sure the LG Treasure is turned off.
- Pull off the back cover from the phone using the groove on the bottom right side.

Step 2



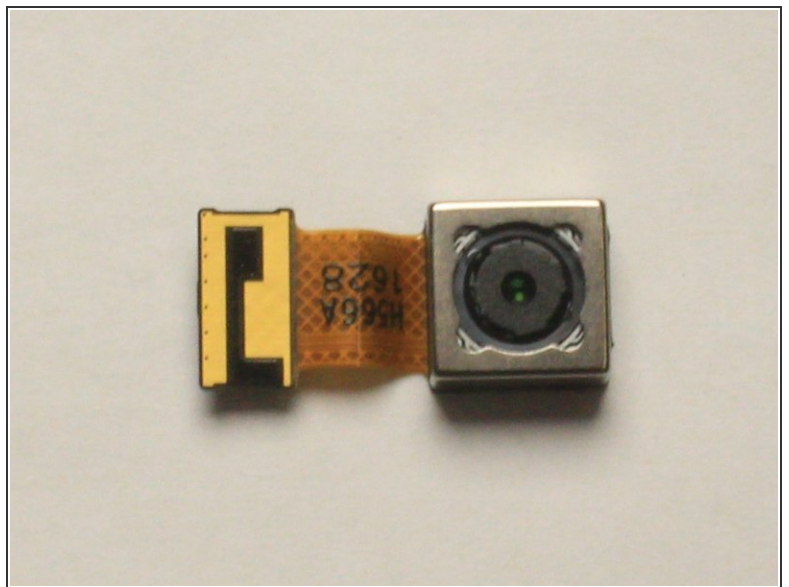
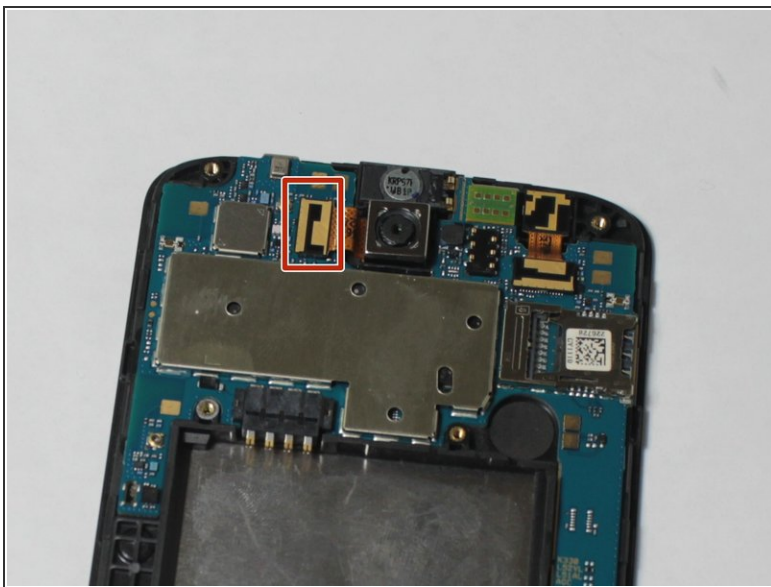
- Remove the battery from the phone by lifting up on the bottom end of the battery.

Step 3 — Rear Camera



- Remove all 9 of the 3 mm Phillips #000 screws from the digitizer.
 - Work your way around the edge of the phone, gently prying the digitizer off the phone.

Step 4



- Pull up on the gold film-like connector which is to the left side of camera. Once you have pulled the connector loose you can then gently lift the rear camera out of the phone.

To reassemble your device, follow these instructions in reverse order.

This document was last generated on 2019-07-15 02:15:48 AM.