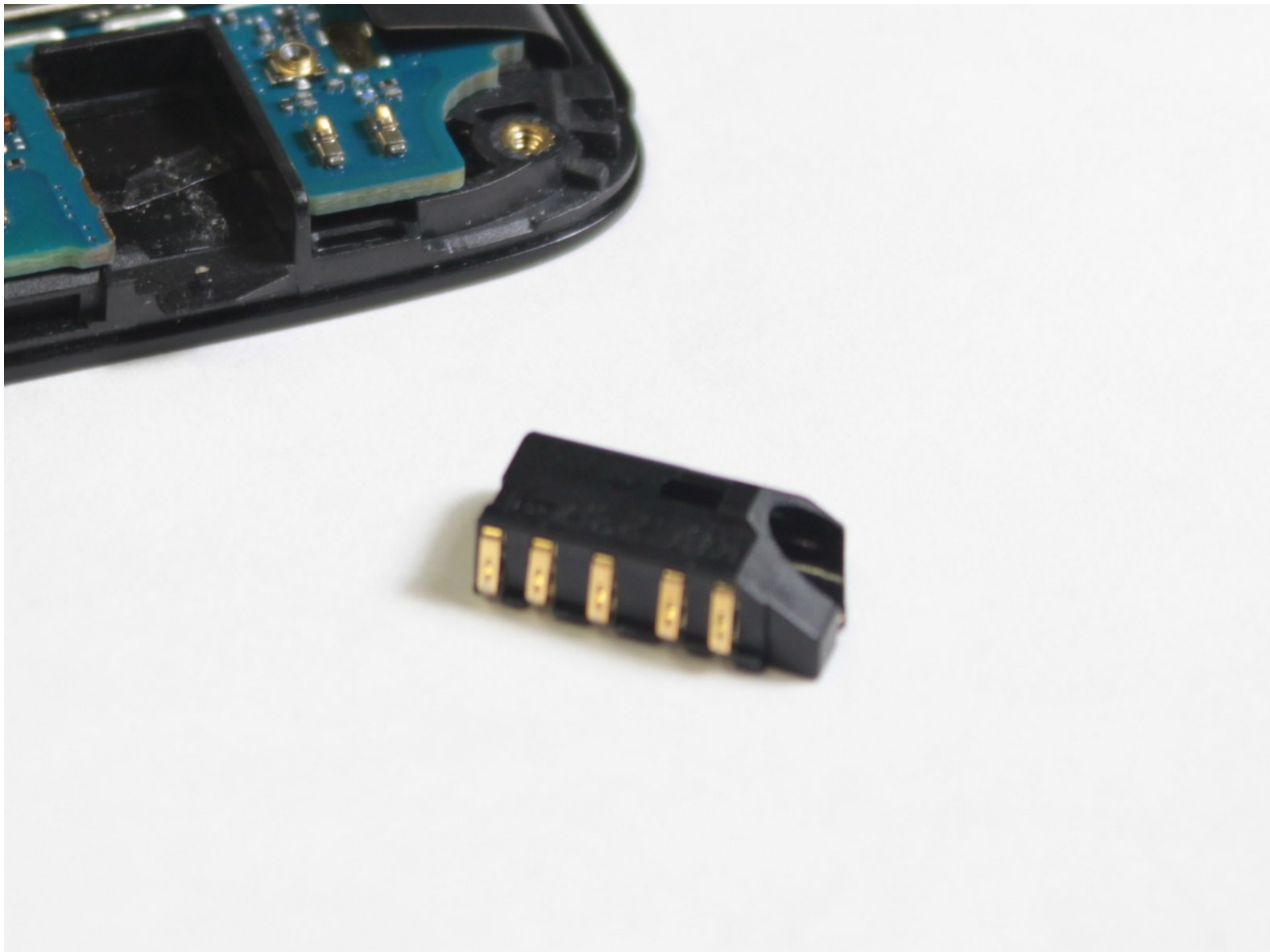




LG Treasure Auxiliary Port Replacement

In this guide you will learn how to properly replace the auxiliary port (headphone jack) on your LG Treasure.

Written By: david amirahmadi



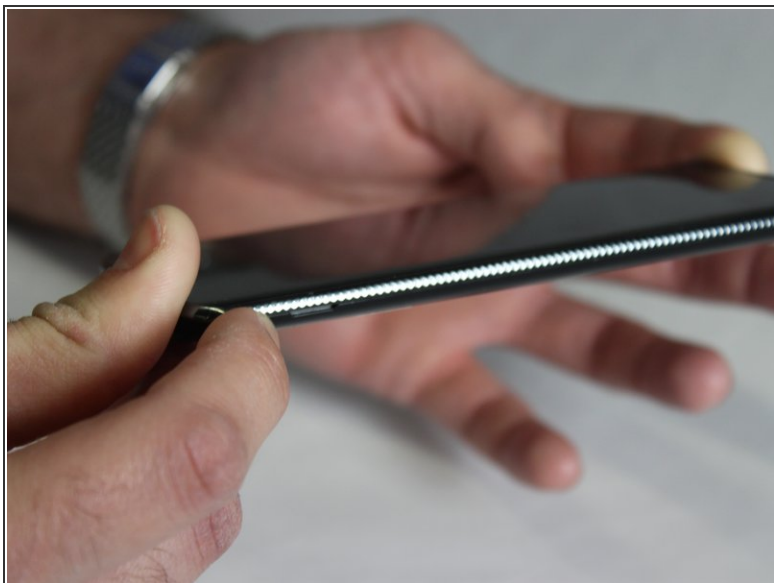
INTRODUCTION

This guide will explain how to replace the Auxiliary Port (headphone jack) on the LG Treasure.

TOOLS:

- [Phillips #000 Screwdriver](#) (1)
-

Step 1 — Battery



- ⓘ Make sure the LG Treasure is turned off.
- Pull off the back cover from the phone using the groove on the bottom right side.

Step 2



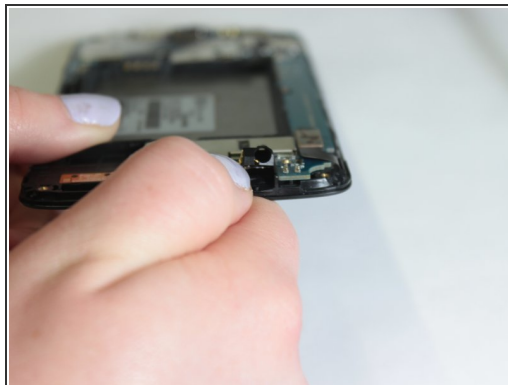
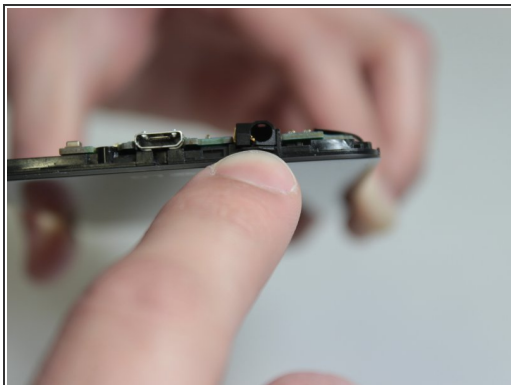
- Remove the battery from the phone by lifting up on the bottom end of the battery.

Step 3 — Auxiliary Port



- Remove all 9 of the 3mm Phillips #000 screws from the digitizer.
 - Work your way around the edge of the phone, gently prying the digitizer off the phone.

Step 4



- Insert your finger nail into the groove under the Auxiliary Port and pry the Auxiliary Port out.

To reassemble your device, follow these instructions in reverse order.

This document was last generated on 2019-08-25 12:22:27 AM.