



The top right corner lights Replacement

Replacing the Top corner lights in Logitech G910

Written By: Nasser



INTRODUCTION

Use this guide to replace the lights of your Logitech G910.

TOOLS:

- [Phillips #0 Screwdriver](#) (1)
 - [Metal Spudger](#) (1)
-

Step 1 — Lights



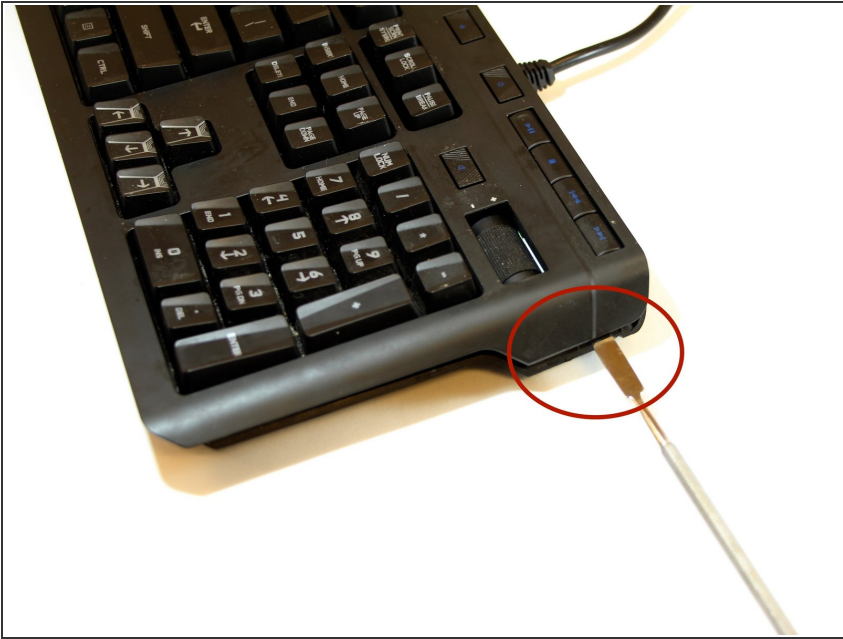
- Pull out the Keyboard from the computer.

Step 2



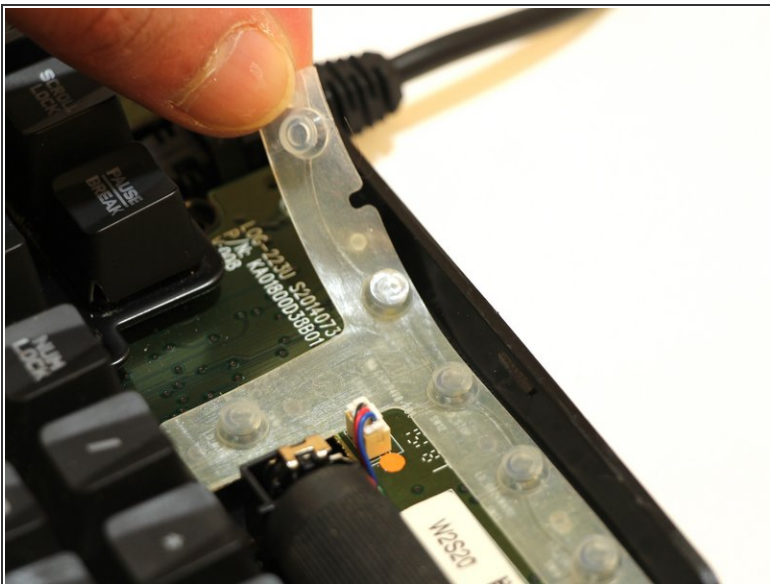
- Flip the keyboard and unscrew the "15" back screws.

Step 3



- Releases the front part.

Step 4



- Gently lift up the plastic film in the top right corner.

To reassemble your device, follow these instructions in reverse order.