



LG Leon LTE Motherboard Replacement

Use this guide to replace the motherboard in your LG Leon LTE.

Written By: Geul Kim



INTRODUCTION

This guide will show you how to replace a motherboard in your LG Leon LTE.

TOOLS:

- [iFixit Opening Tools](#) (1)
 - [64 Bit Driver Kit](#) (1)
-

Step 1 — Motherboard



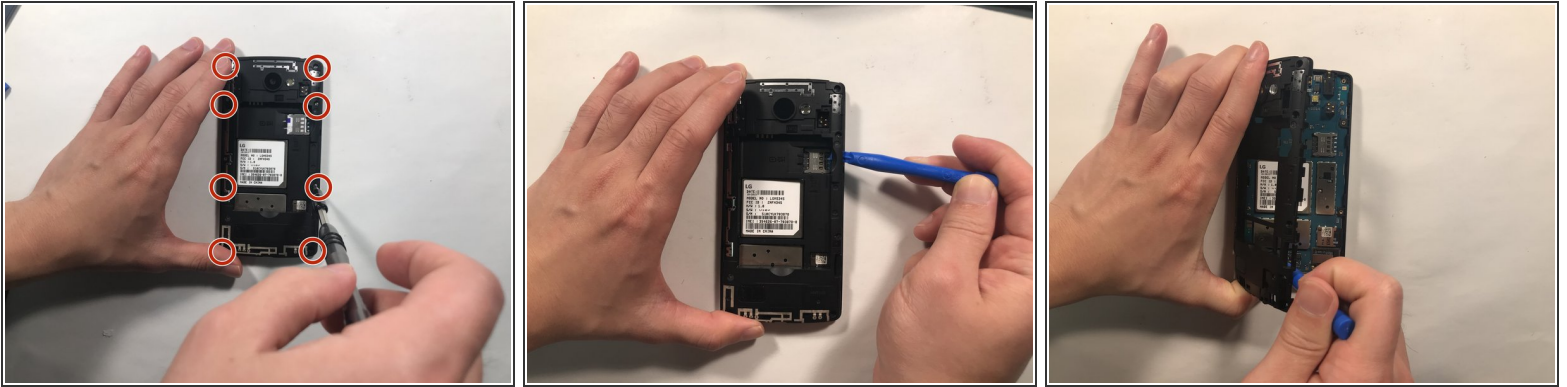
- Turn the phone over so the back is facing upward.

Step 2



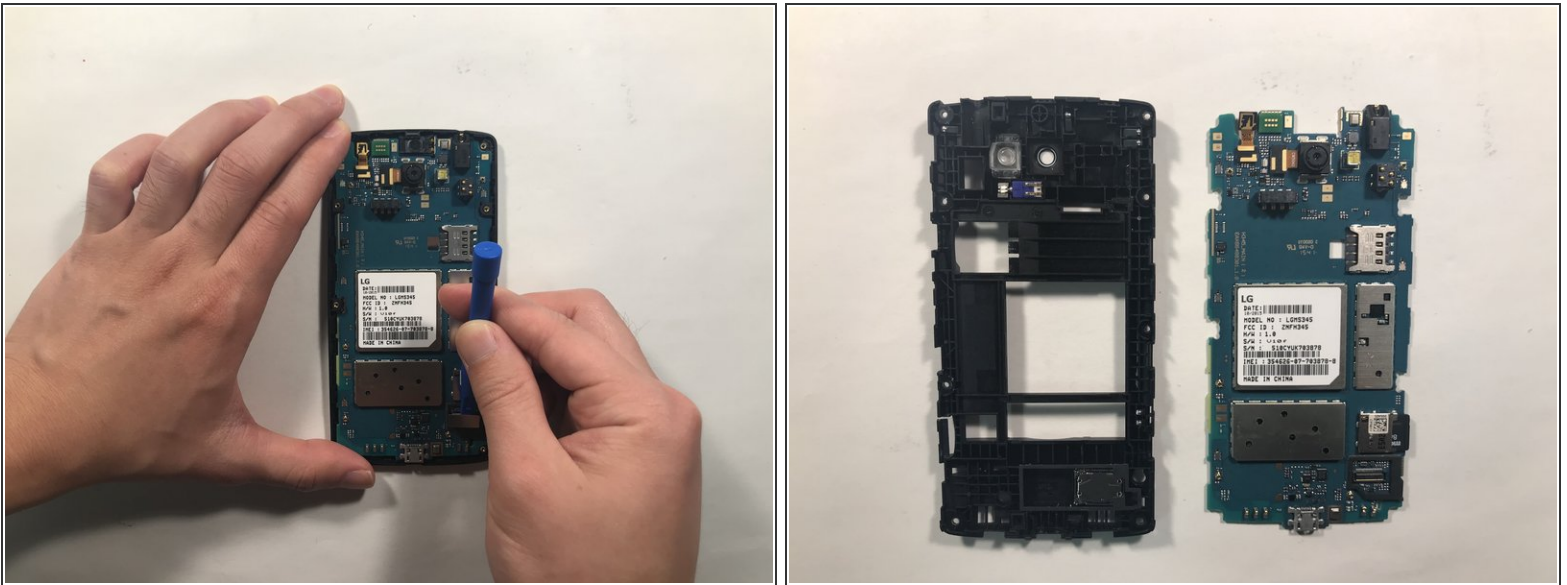
- Insert your opening tool in the incision at the bottom center of the phone.
- Push upward with the opening tool to pry the back of the phone open.
- Remove the back completely and set aside.

Step 3



- Using the Phillips #0 screwdriver, unscrew the 8 screws that secure the back frame to the body of the phone.
- ☑ Remember to put the screws in a safe place so you don't lose them.
- Once all screws are removed, use the opening tool to pry the back frame of the phone free.

Step 4



- Using the opening tool, gently pry the phone's earpiece off. Set aside.
- Separate the old motherboard from the phone fixture by pulling it apart.
- Gently press the replacement motherboard into the phone fixture.

To reassemble your device, follow these instructions in reverse order.

This document was last generated on 2019-04-01 06:19:43 AM.