



How to Fix a Hole In Wall

This is a guide on how to successfully fix a small hole in drywall.

Written By: Darrian Johnson



INTRODUCTION

Have you ever opened a door too hard and it hit the wall causing a small hole in the wall? This is a problem that so many people have, especially with children in the home. Most modern homes have walls made of a material called drywall. A hole in drywall is very easy to patch. It requires no prior skill or experience. This fix requires inexpensive tools and materials that you may find at a local hardware store or you may even already have some of these items at home. This is a guide on how to patch a small hole in the wall for beginners. This guide will include a complete step by step guide along with all tools and materials that are needed to complete this task.

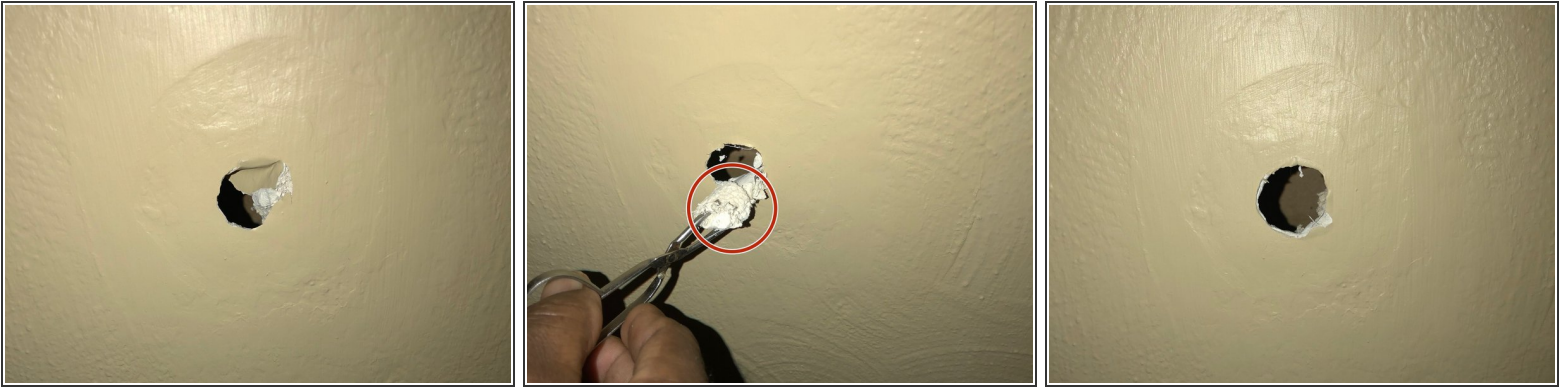
TOOLS:

- [Sand Paper](#) (1)
- [Paintbrush](#) (1)
- [All-Purpose Sponge](#) (1)
- [Utility Scissors](#) (1)
- [Small Chain Nose Pliers](#) (1)
- [Tweezers](#) (1)
- [Putty knife](#) (1)

PARTS:

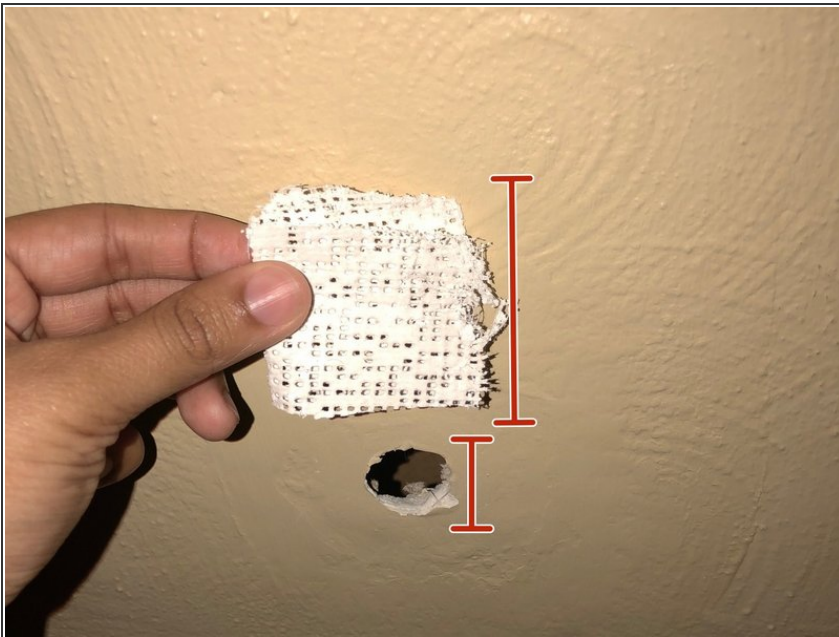
- [Dap Drydex Spackling](#) (1)
- [Mesh Tape](#) (1)
- [Paint](#) (1)

Step 1 — Dry wall



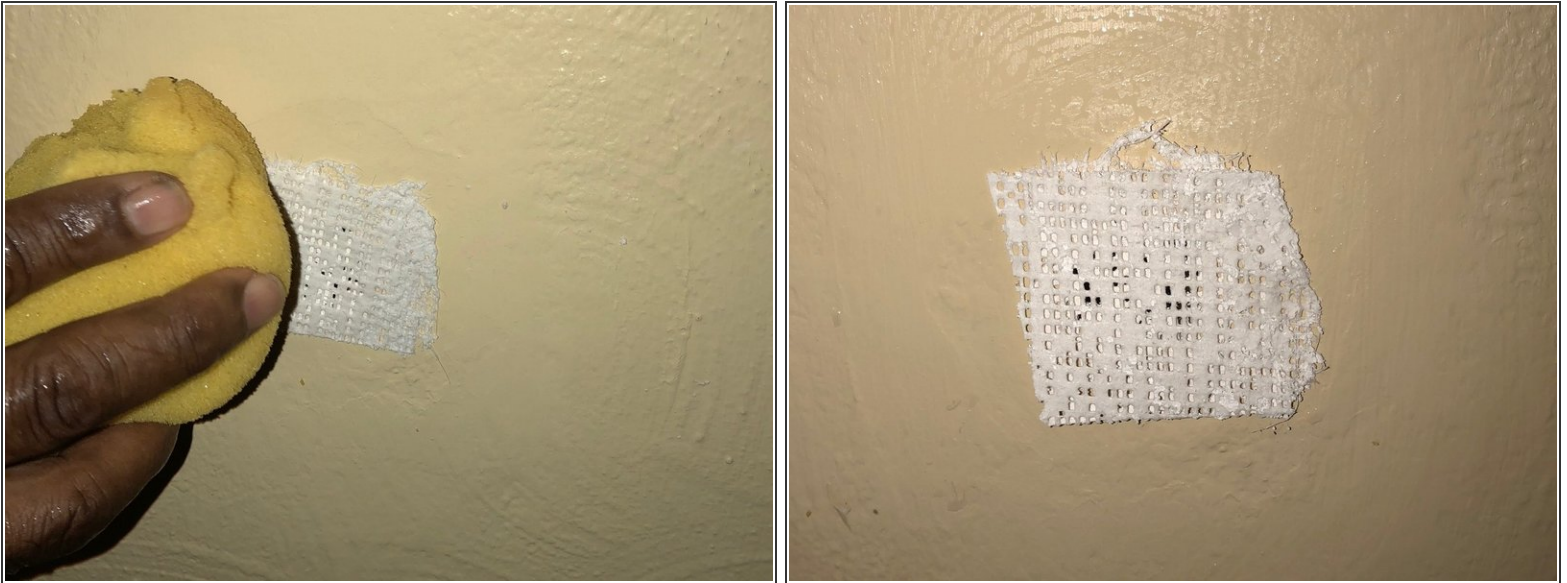
- Use pliers (or tweezers if the hole is very small) to clean out hole by removing the drywall out of the hole.

Step 2



- Use scissors to cut drywall mesh.
- ⓘ To ensure that the entire hole is covered, cut a piece of mesh larger than the size of the hole.

Step 3



- Use a damp sponge to apply moisture to make the mesh stick to the wall, covering the entire hole.

Step 4



- Use a drywall knife to apply the drywall compound over the mesh. Make sure to spread a generous amount over the entire mesh.
- Let the compound dry for about 30 minutes.
- ⓘ You can speed up the drying process by placing a fan directly in front of the drying compound.

Step 5



- Once compound is dry, use sandpaper to smooth out the entire surface of the dried compound.

Step 6



- Paint over the surface with a paint brush.
- ⓘ Use paint that matches the rest of the wall for best results.

To reassemble your device, follow these instructions in reverse order.