



Toshiba Satellite P75-A7100 Motherboard Replacement

The guide will show how to replace the motherboard.

Written By: Mia Manzanares



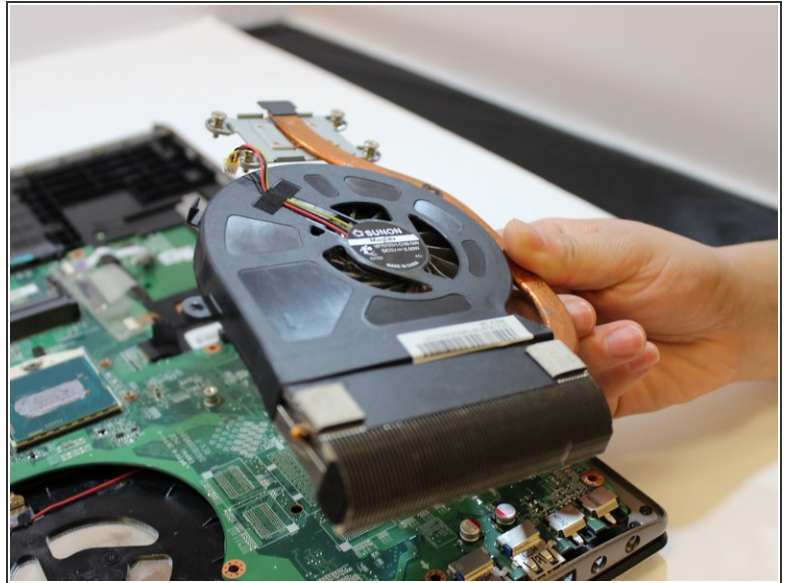
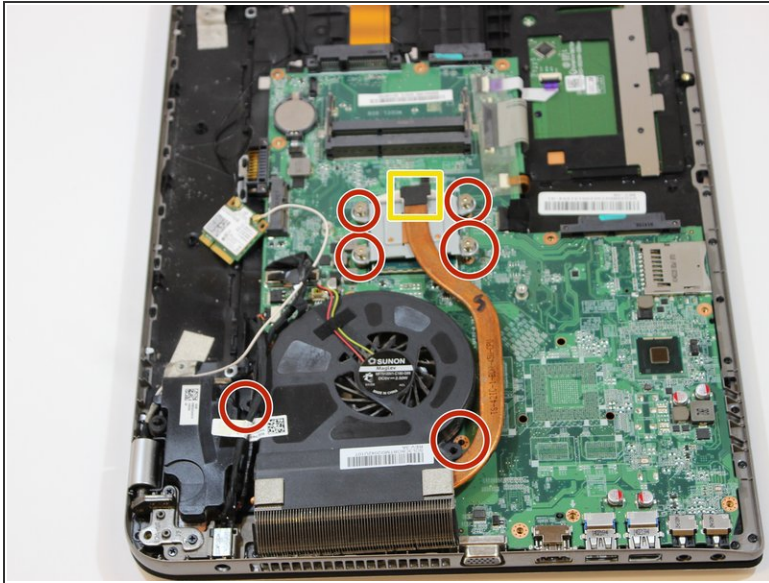
INTRODUCTION

In this guide, we will show you how to replace your computer's motherboard. It is important to replace your motherboard when your computer does not fully re-boot at all.

TOOLS:

- [Phillips #1 Screwdriver](#) (1)
 - [2.5 mm Flathead Screwdriver](#) (1)
-

Step 1 — Fan



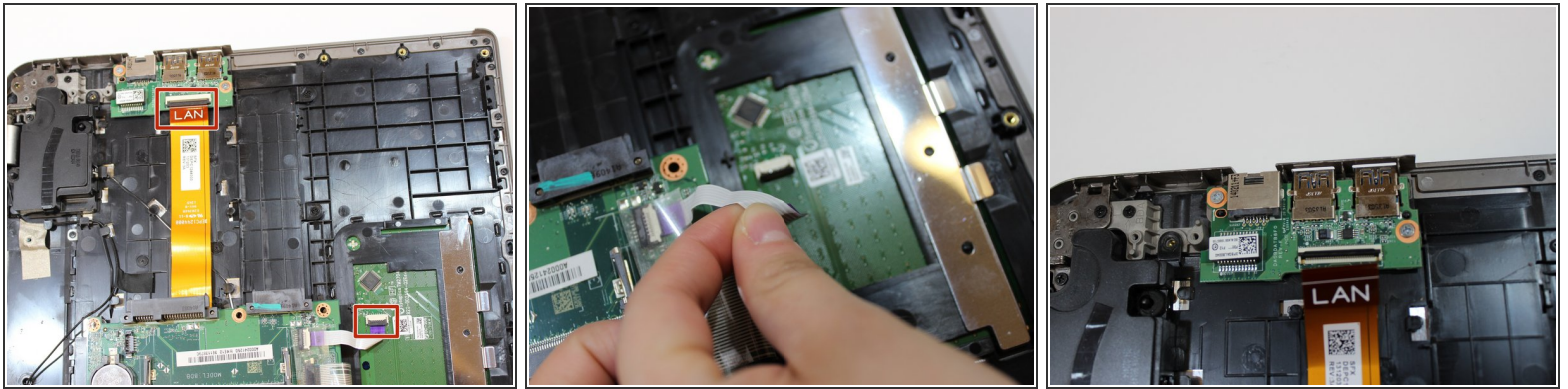
- Using a Phillips #1 screwdriver, unscrew the 6 remaining screws attached to the fan.
- Unplug the connector connecting the fan to the motherboard.
- Remove the fan from the device.

Step 2 — Motherboard



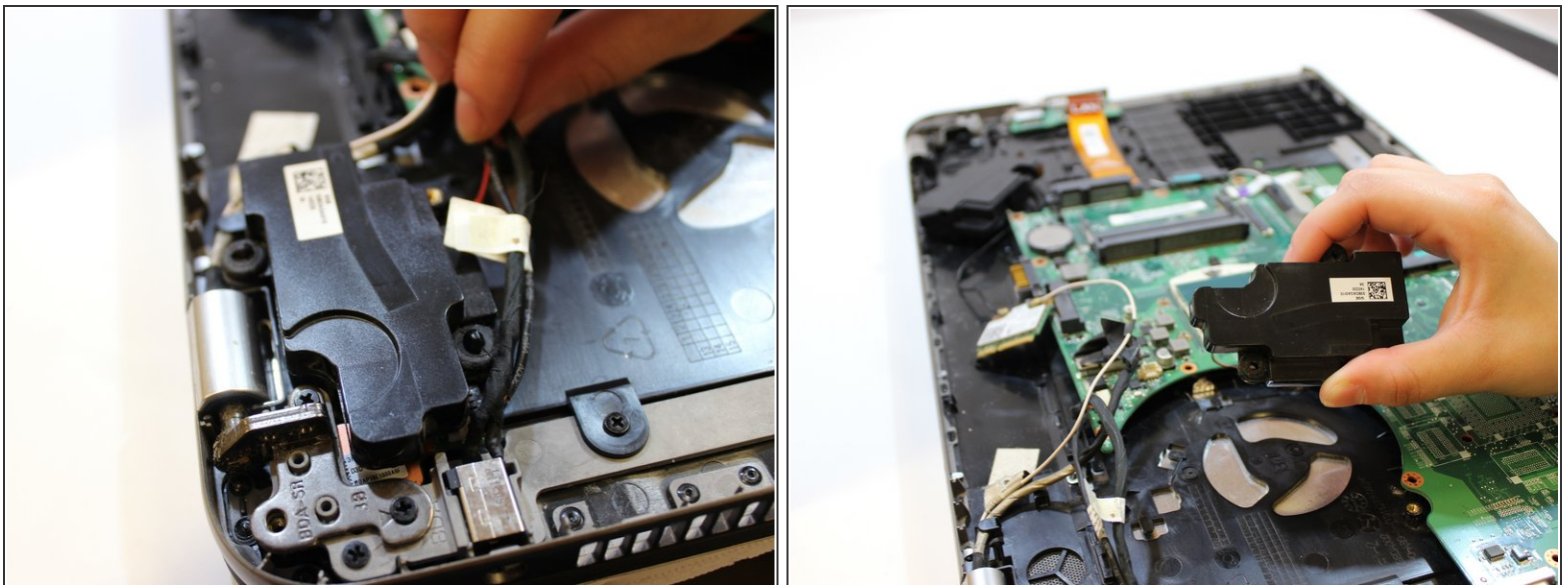
- Take out all remaining screws in the motherboard.

Step 3



- Disconnect the purple and orange ZIF connectors from the motherboard.

Step 4



- Remove cartridges from laptop by lifting them up.

Step 5



- Disconnect all wires from the motherboard and replace motherboard.

To reassemble your device, follow these instructions in reverse order.

This document was last generated on 2019-08-22 06:27:00 AM.