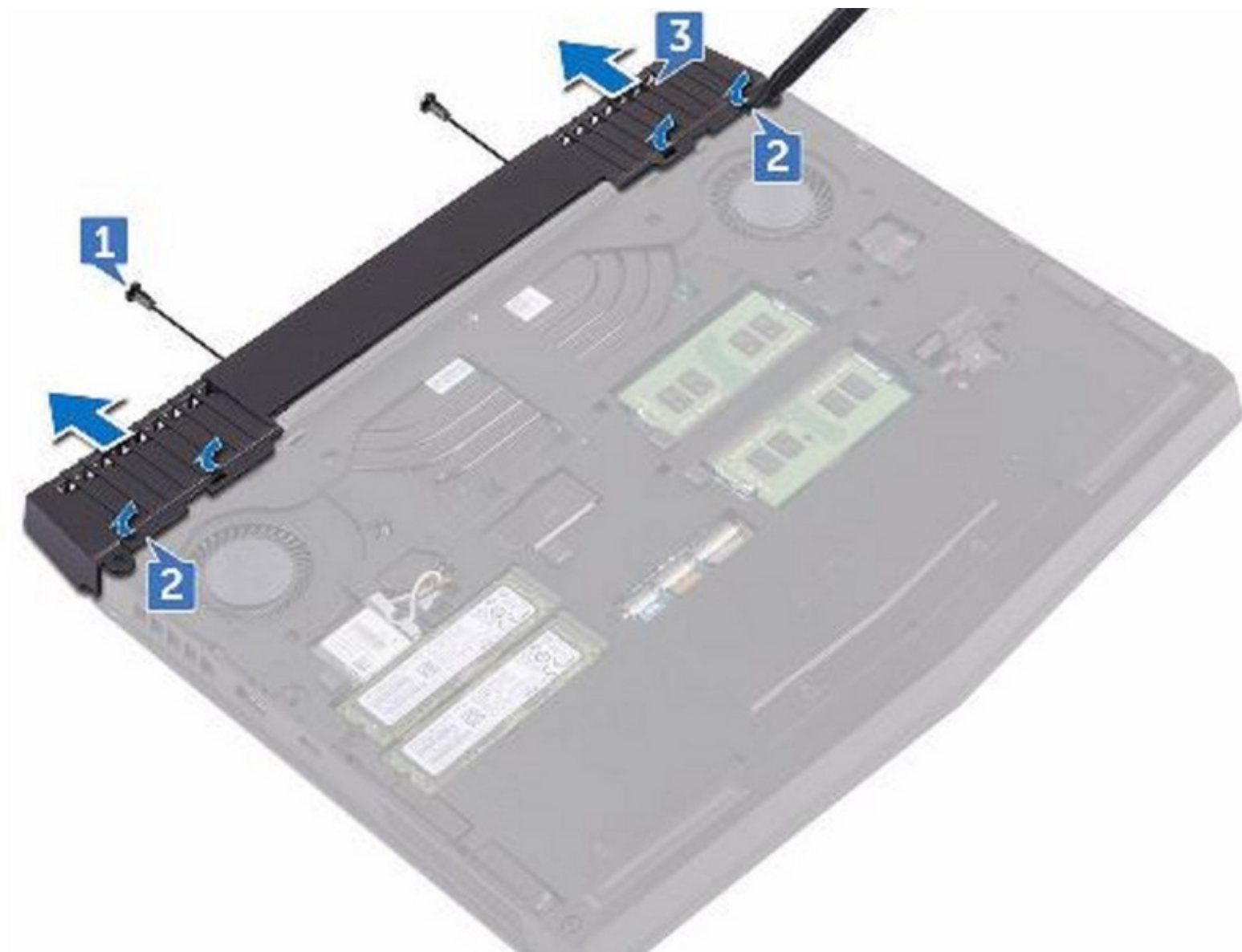




# Dell Alienware 13 R3 Rear-I/O Cover Replacement

In this guide, we will show you how to remove and replace the Rear-I/O Cover.

Written By: Teren Wallace



## **INTRODUCTION**

In this guide, we will show you how to remove and replace the Rear-I/O Cover.

## Step 1 — Loosen the Screws



**⚠ WARNING:** Before working inside your computer, read the safety information that shipped with your computer and follow the steps in [Before Working Inside Your Computer](#). After working inside your computer, follow the instructions in [After Working Inside Your Computer](#).

- Loosen the five captive screws that secure the base cover to the computer base.

## Step 2 — Pry the Base Cover



- Using a plastic scribe, gently pry the base cover to release the tabs on the base cover from the slots on the computer base.

### Step 3 — Lift the Base Cover



- Lift the base cover off the computer base.

### Step 4 — Disconnect the Battery Cable



- Using a plastic scribe, disconnect the battery cable from the system board.

## Step 5 — Press and Hold the Power-Button



- Press and hold the power button for five seconds to ground the system board.

## Step 6 — Connect the Battery Cable



- Connect the battery cable to the system board.

## Step 7 — Slide the Tabs



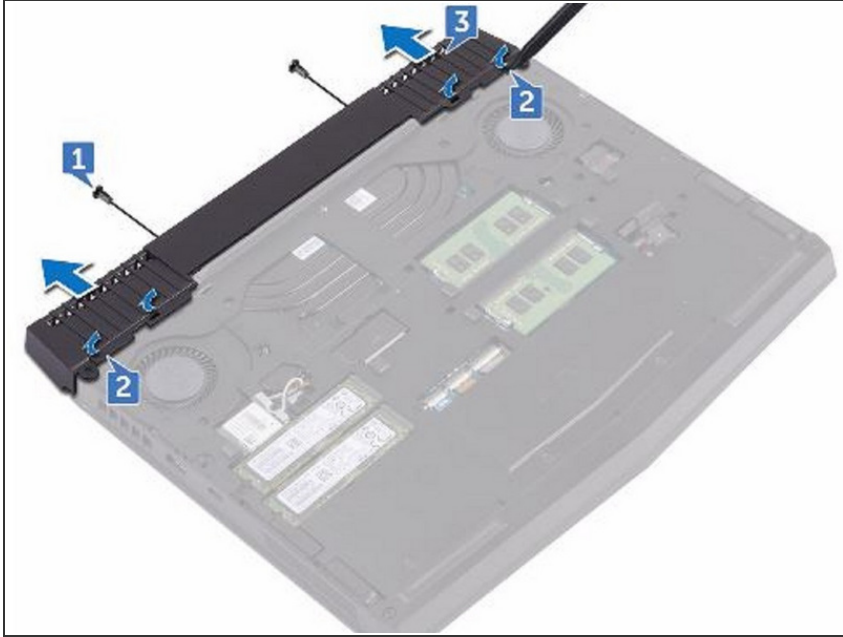
- Slide the tabs on the **NEW** base cover into the slots on the computer base and snap the base cover into place

## Step 8 — Tighten the Five Captive Screws



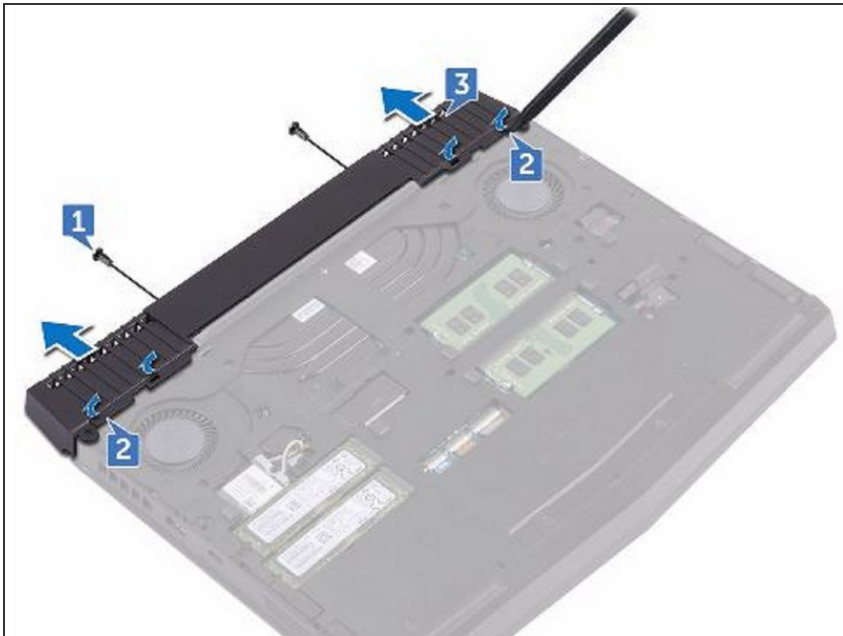
- Tighten the five captive screws that secure the base cover to the computer base.

## Step 9 — Remove the Screws



- Remove the two screws (M2.5x6L) that secure the rear-I/O cover to the palm-rest assembly.

## Step 10 — Using a Plastic Scribe



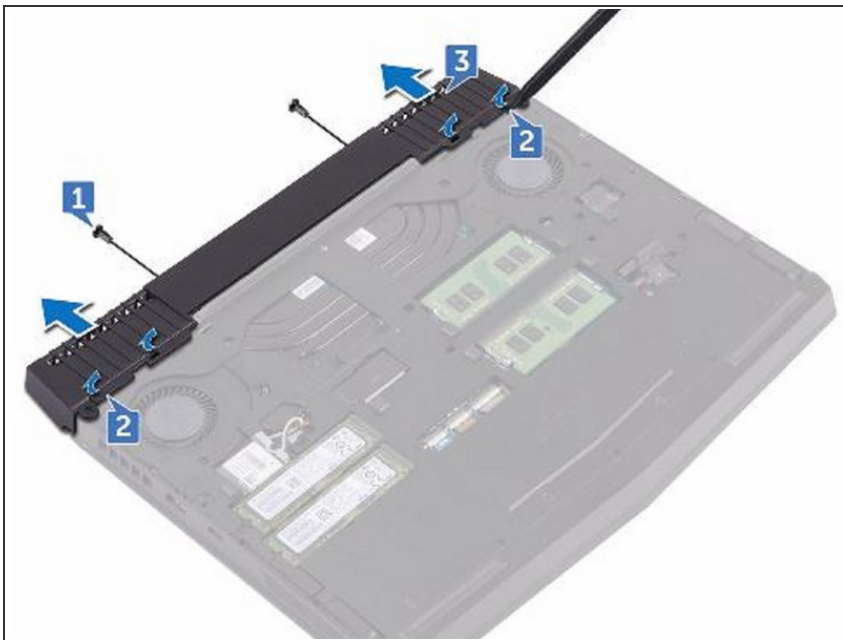
- Using a plastic scribe, gently release the tabs that secure rear-I/O cover to the computer base.

## Step 11 — Removing the Rear-I/O



- Slide and remove the rear-I/O cover from the computer base.

## Step 12 — Sliding the Rear-I/O



- Slide the **NEW** rear-I/O cover into the slots on the computer base and snap the rear-I/O cover into place.



## Step 13 — Replace the two Screws



- Replace the two screws (M2.5x6L) that secure the rear-I/O cover to the palm-rest assembly.
- 

To reassemble your device, follow these instructions in reverse order.

This document was last generated on 2018-07-19 07:00:44 PM.