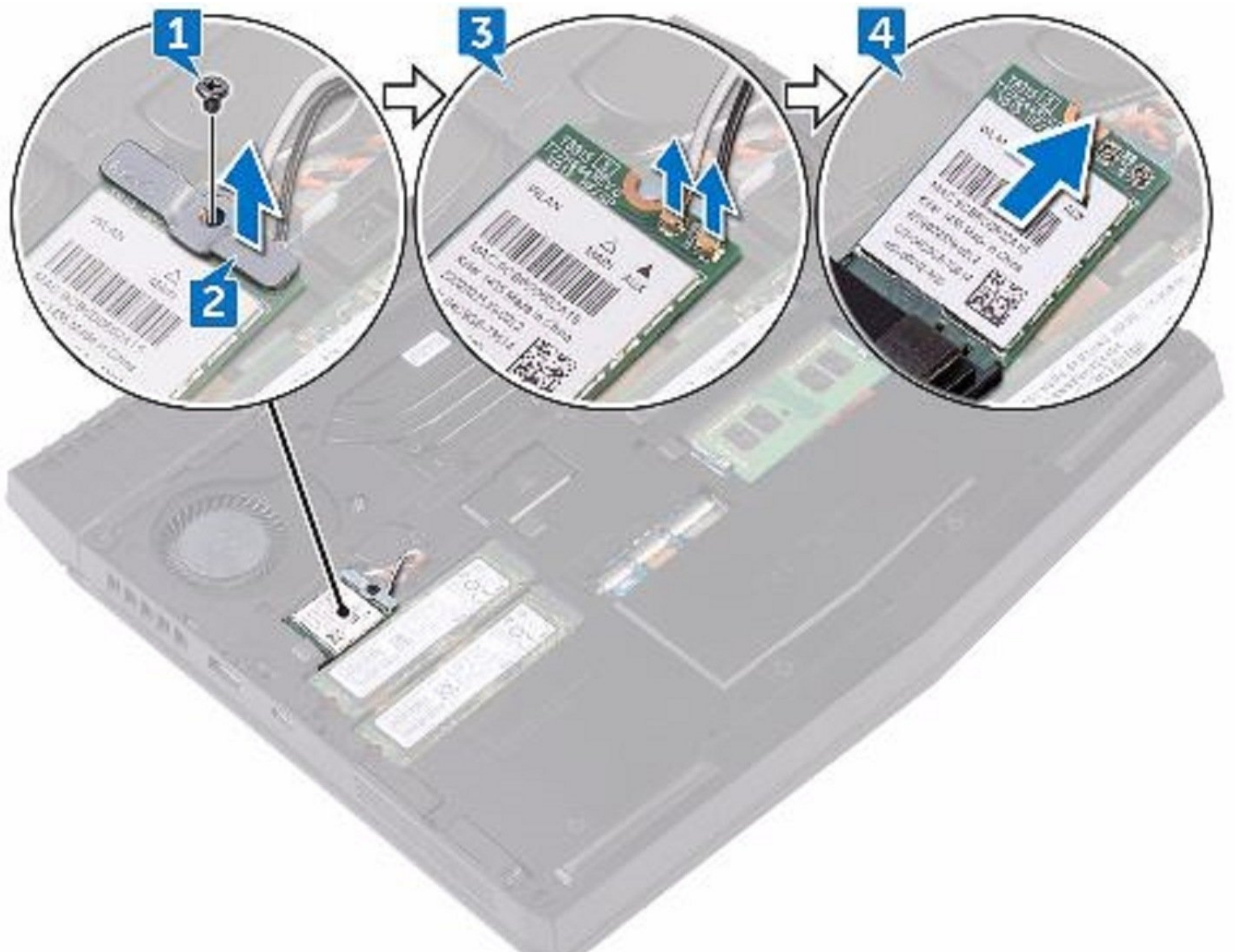




# Dell Alienware 13 R3 Wireless Card Replacement

In this guide, we will show you how to remove and replace the wireless card.

Written By: Terrence15



---

## INTRODUCTION

In this guide, we will show you how to remove and replace the wireless card.

---

### TOOLS:

- [Pro Tech Toolkit](#) (1)
-

## Step 1 — Loosen the Screws



**⚠ WARNING:** Before working inside your computer, read the safety information that shipped with your computer and follow the steps in [Before Working Inside Your Computer](#). After working inside your computer, follow the instructions in [After Working Inside Your Computer](#).

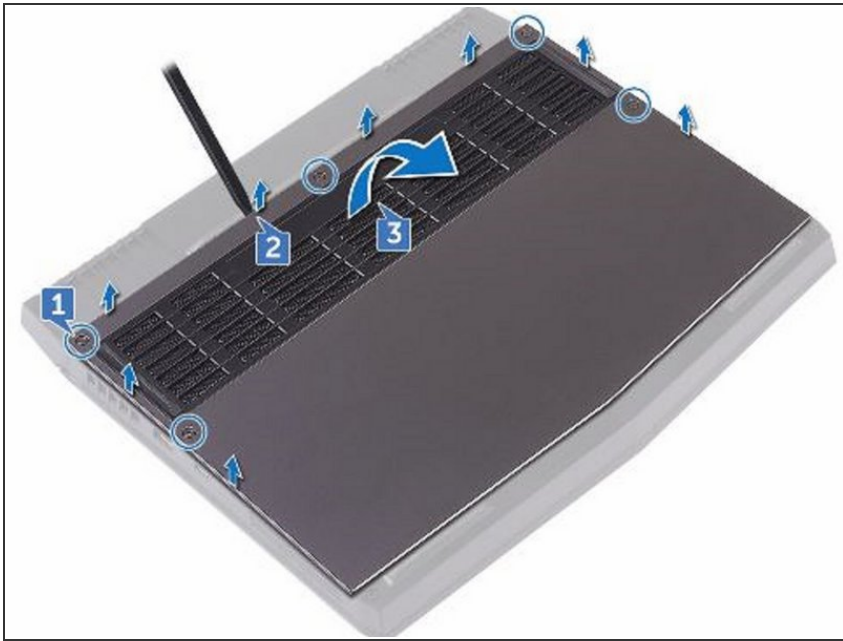
- Loosen the five captive screws that secure the base cover to the computer base.

## Step 2 — Pry the Base Cover



- Using a plastic scribe, gently pry the base cover to release the tabs on the base cover from the slots on the computer base.

### Step 3 — Lift the Base Cover



- Lift the base cover off the computer base.

### Step 4 — Disconnect the Battery Cable



- Using a plastic scribe, disconnect the battery cable from the system board.

## Step 5 — Press and Hold the Power-Button



- Press and hold the power button for five seconds to ground the system board.

## Step 6 — Connect the Battery Cable



- Connect the battery cable to the system board.

## Step 7 — Slide the Tabs



- Slide the tabs on the **NEW** base cover into the slots on the computer base and snap the base cover into place

## Step 8 — Tighten the Five Captive Screws



- Tighten the five captive screws that secure the base cover to the computer base.

## Step 9 — Align the Notch

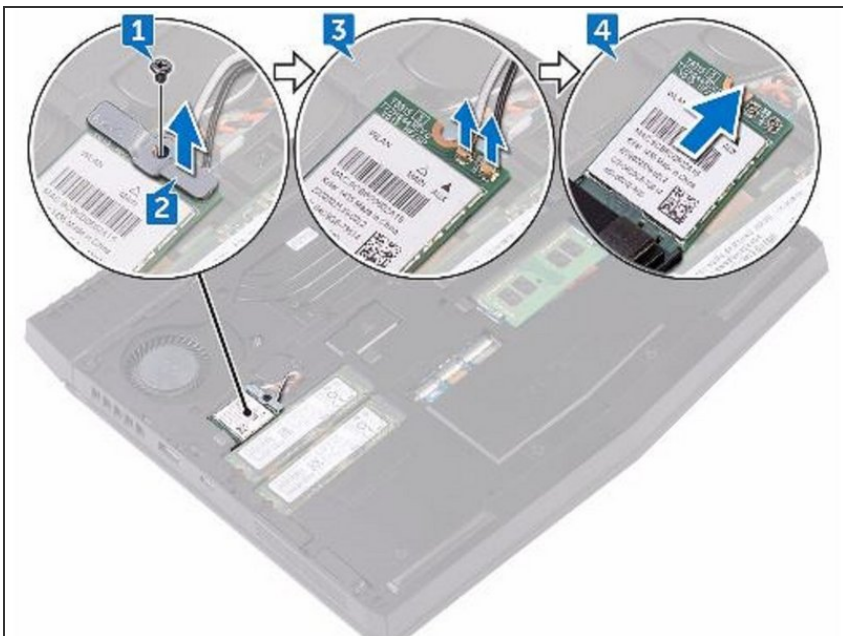


**⚠ WARNING:** Before working inside your computer, read the safety information that shipped with your computer and follow the steps in [Before Working Inside Your Computer](#). After working inside your computer, follow the instructions in [After Working Inside Your Computer](#).

**⚠ CAUTION:** To avoid damaging the wireless card, do not place any cables under it.

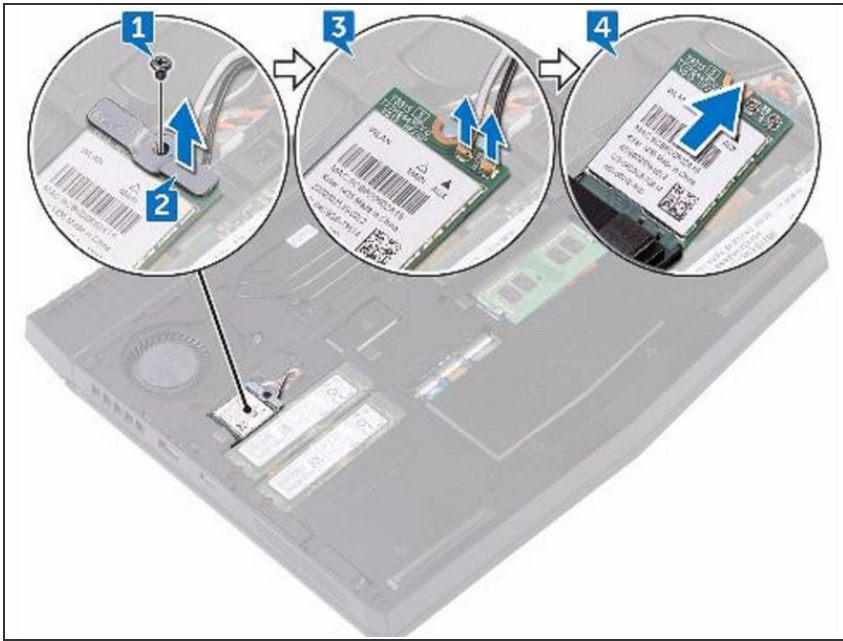
- Remove the screw (M2x3) that secures the wireless card and bracket to the computer base.

## Step 10 — Lift the Wireless-Card Bracket



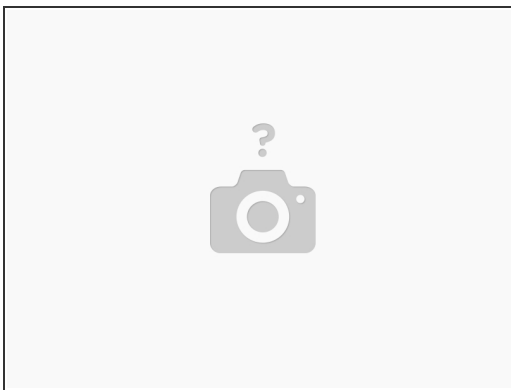
- Lift the wireless-card bracket off the wireless card.

## Step 11 — Disconnecting the Antenna Cables



- Disconnect the antenna cables from the wireless card.

## Step 12 — Align the Notch



**⚠ CAUTION:** To avoid damaging the wireless card, do not place any cables under it.

- Align the notch on the wireless card with the tab on the wireless-card slot.



## Step 13 — Slide the Wireless Card



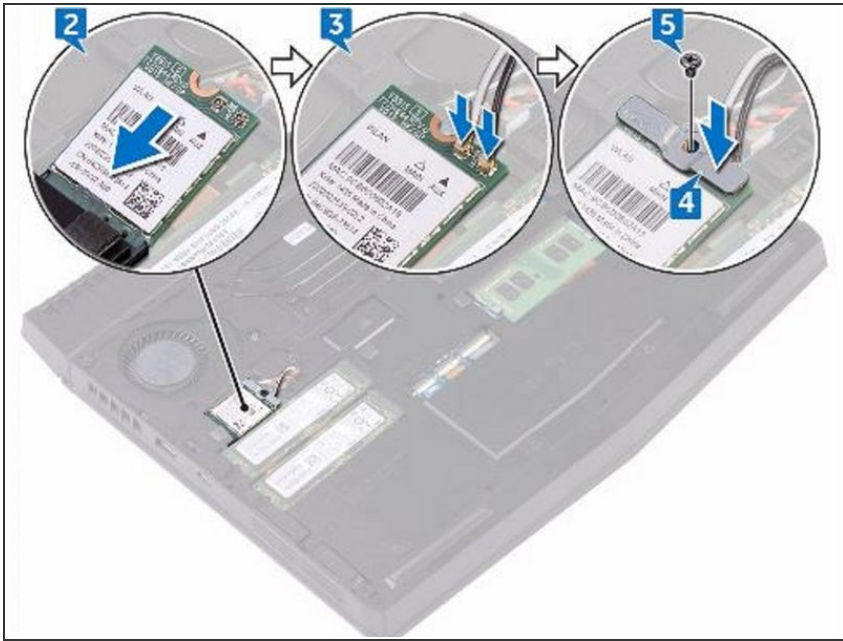
- Slide the **NEW** wireless card at an angle into the wireless-card slot.

## Step 14 — Connect the Antenna Cables



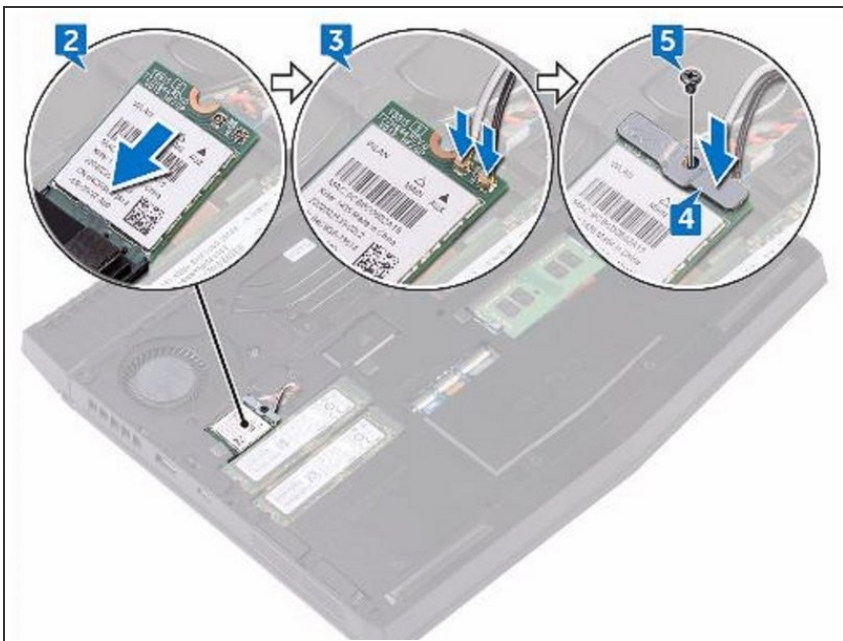
- Connect the antenna cables to the wireless card.

## Step 15 — Align the Screw Hole



- Align the screw hole on the wireless-card bracket with the screw hole on the wireless card and the computer base.

## Step 16 — Replace the Screw



- Replace the screw (M2x3) that secures the wireless-card bracket to the wireless card and the computer base.

To reassemble your device, follow these instructions in reverse order.