



# Dell Alienware 13 R3 Memory Modules Replacement

In this guide, we will show you how to remove and replace the memory module.

Written By: Terrence15



---

## INTRODUCTION

In this guide, we will show you how to remove and replace the memory module.

---

### TOOLS:

- [Pro Tech Toolkit](#) (1)
-

## Step 1 — Loosen the Screws



**⚠ WARNING:** Before working inside your computer, read the safety information that shipped with your computer and follow the steps in [Before Working Inside Your Computer](#). After working inside your computer, follow the instructions in [After Working Inside Your Computer](#).

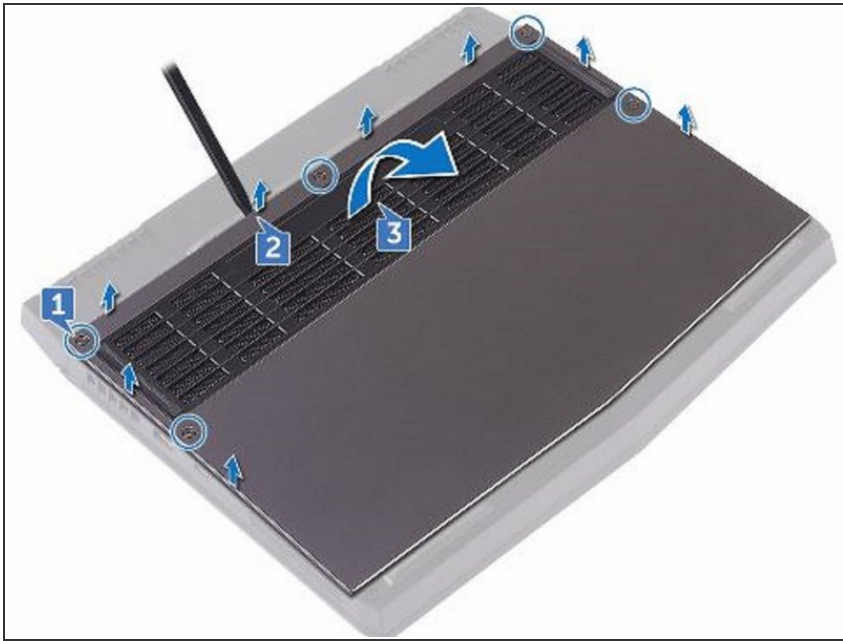
- Loosen the five captive screws that secure the base cover to the computer base.

## Step 2 — Pry the Base Cover



- Using a plastic scribe, gently pry the base cover to release the tabs on the base cover from the slots on the computer base.

### Step 3 — Lift the Base Cover



- Lift the base cover off the computer base.

### Step 4 — Disconnect the Battery Cable



- Using a plastic scribe, disconnect the battery cable from the system board.

## Step 5 — Press and Hold the Power-Button



- Press and hold the power button for five seconds to ground the system board.

## Step 6 — Connect the Battery Cable



- Connect the battery cable to the system board.

## Step 7 — Slide the Tabs



- Slide the tabs on the **NEW** base cover into the slots on the computer base and snap the base cover into place

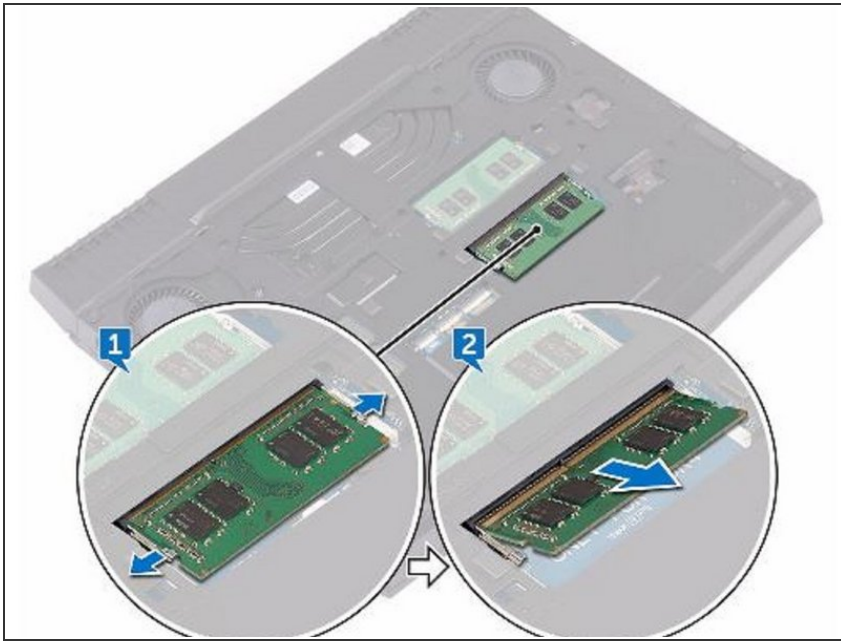
## Step 8 — Tighten the Five Captive Screws



- Tighten the five captive screws that secure the base cover to the computer base.



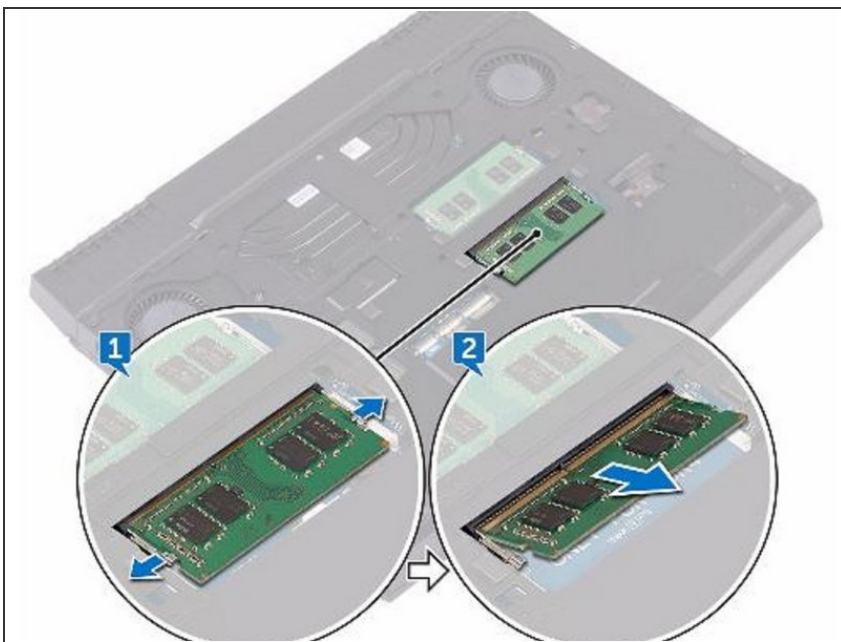
## Step 9 — Popping up the Memory Module



**⚠ WARNING:** Before working inside your computer, read the safety information that shipped with your computer and follow the steps in [Before Working Inside Your Computer](#). After working inside your computer, follow the instructions in [After Working Inside Your Computer](#).

- Using your fingertips, carefully spread apart the securing clips on each end of the memory-module slot until the memory module pops up.

## Step 10 — Remove the Memory Module



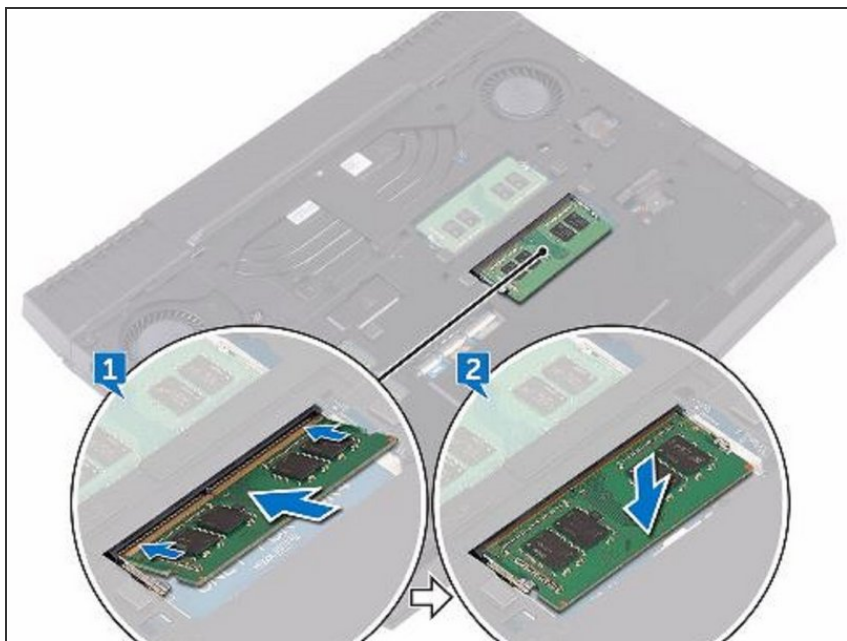
- Slide and remove the memory module from the memory-module slot.

## Step 11 — Align the Notch



- Align the notch on the **NEW** memory module with the tab on the memory-module slot and slide the memory module firmly into the slot at an angle.

## Step 12 — Press the Memory Module Down



- Press the memory module down until it clicks into place.

To reassemble your device, follow these instructions in reverse order.

This document was last generated on 2019-08-18 08:20:44 PM.