



Toshiba Satellite C55D-B5310 Battery Replacement

How to replace the battery in a Toshiba Satellite C55D-B5310.

Written By: Crystal Loomis



INTRODUCTION

If the laptop is having internal software issues or Windows has warned that the battery has reached extremely low capacity, use this guide to remove and replace the battery.

TOOLS:

- [Magnetic Project Mat](#) (1)
 - [Phillips #1 Screwdriver](#) (1)
-

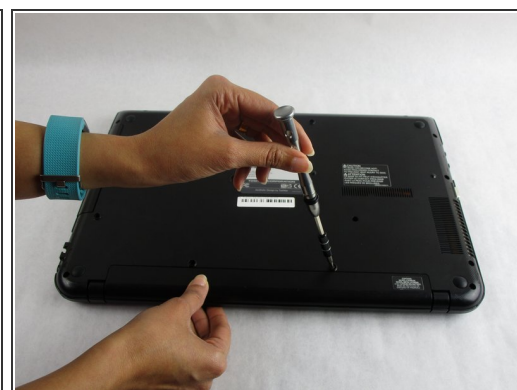
Step 1 — Battery



 Turn off your laptop before starting.

- Flip the laptop over so the model stickers face the ceiling.

Step 2



- Use a Phillips #1 screwdriver (PH1 bit) to remove the two 7 mm screws that secure the battery.

Step 3



- Carefully slide the battery out of the laptop.

To reassemble your device, follow these instructions in reverse order.