



Dell Quietkey SK-8000 Keyboard Teardown

This is a complete teardown of the Dell Quietkey SK-8000 Keyboard.

Written By: Ion



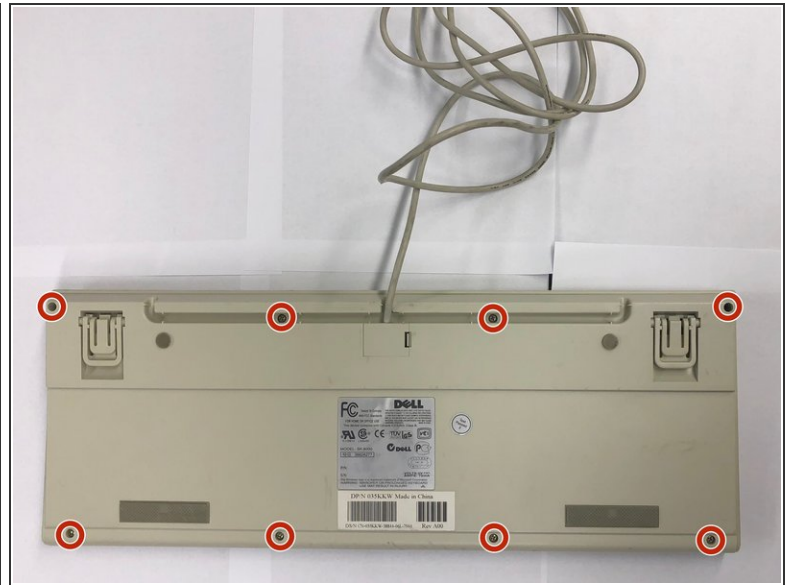
INTRODUCTION

This is a complete teardown of the Dell Quietkey SK-8000 Keyboard.

TOOLS:

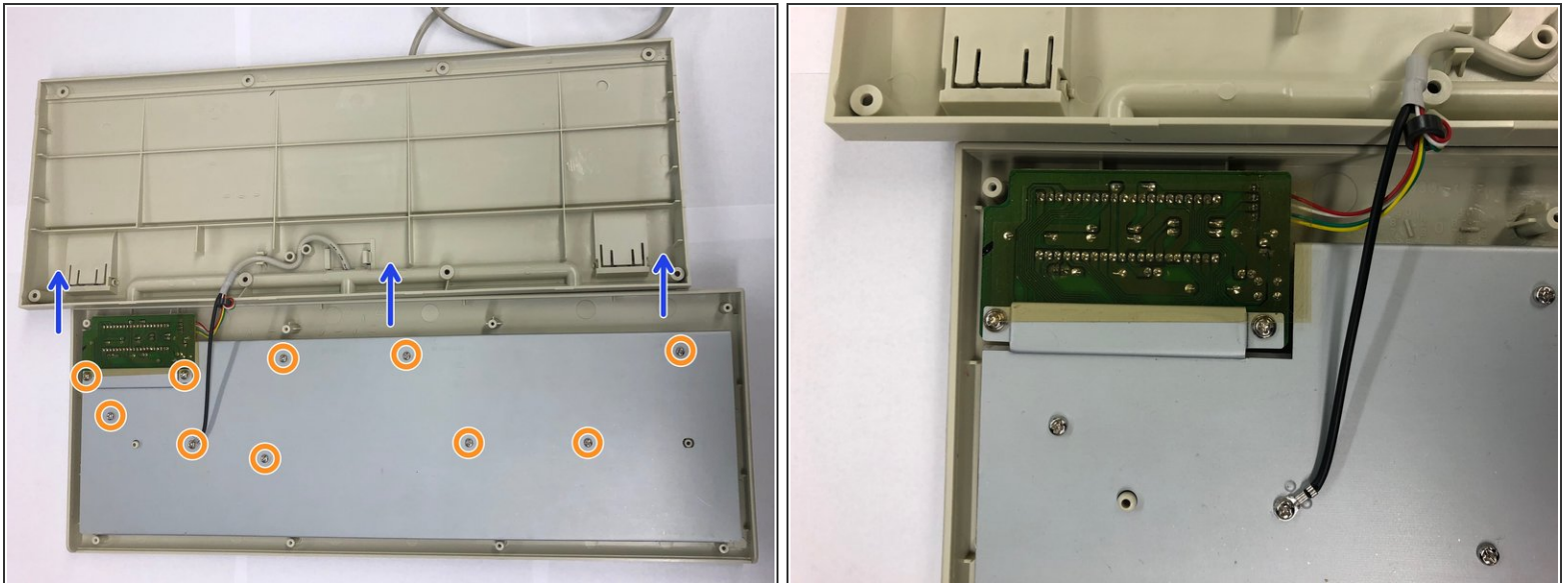
- [Phillips #1 Screwdriver](#) (1)
-

Step 1 — Remove Back Plastic Body




- Flip the keyboard over to expose 8 screws.
- Use a Phillips screwdriver to unscrew and remove each screw.

Step 2

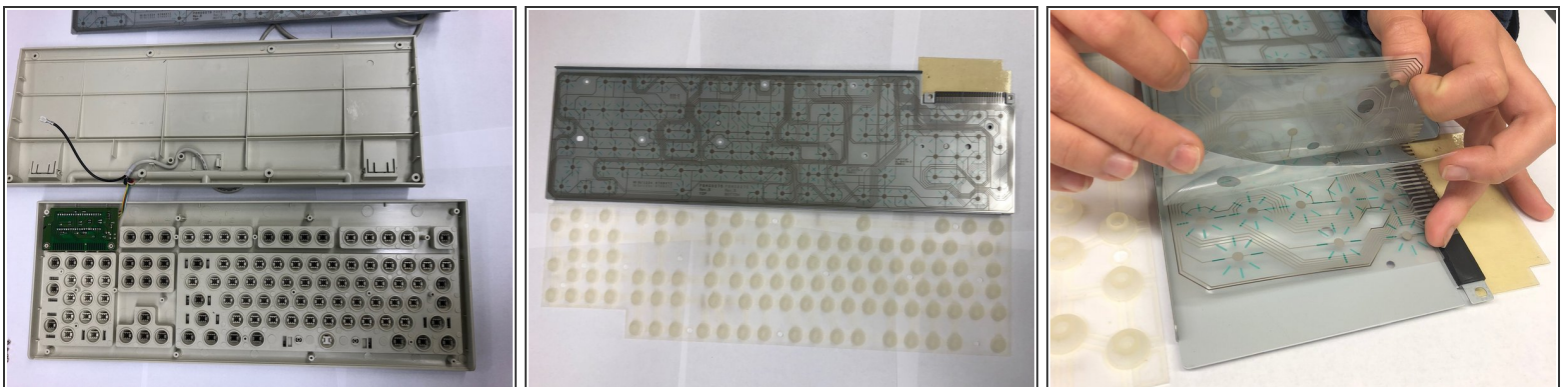


- Lift the keyboard upward from the bottom.

 Do not pull too hard when lifting the base. Be careful not to destroy the wires connecting to the base of the keyboard.

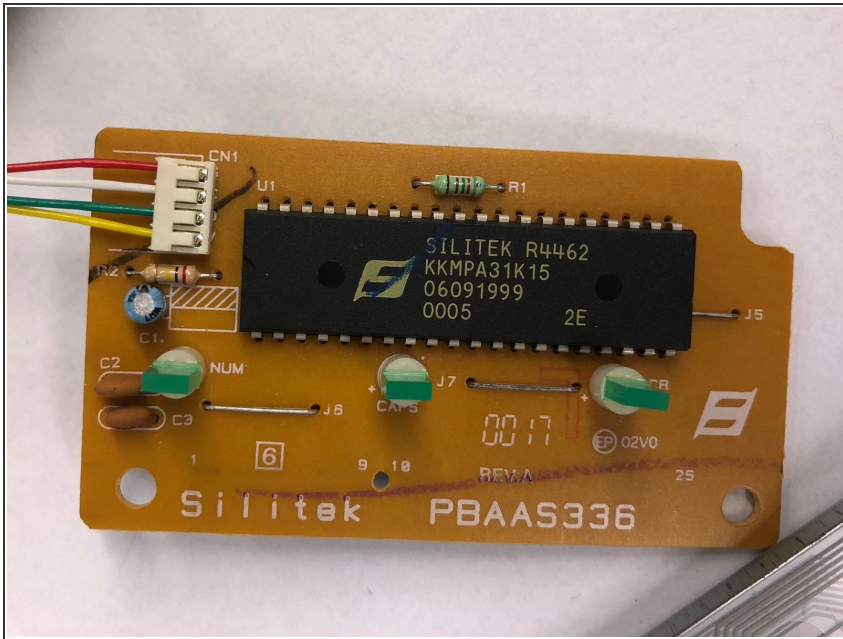
- Use a Phillips screwdriver to remove the remaining ten screws on the aluminum plate.

Step 3 — Completion



- Carefully lift each part out. Each part should lift out very easily after the screws are removed.

Step 4 — Siltek Chip Reveal



- The keyboard controller is seen to be a Siltek R4462.

This document was last generated on 2019-07-16 01:56:03 AM.