



ProLine HB25 Disassembly

A full disassembly of this product for use as guideline for specific fixes.

Written By: Jorma van Dalen



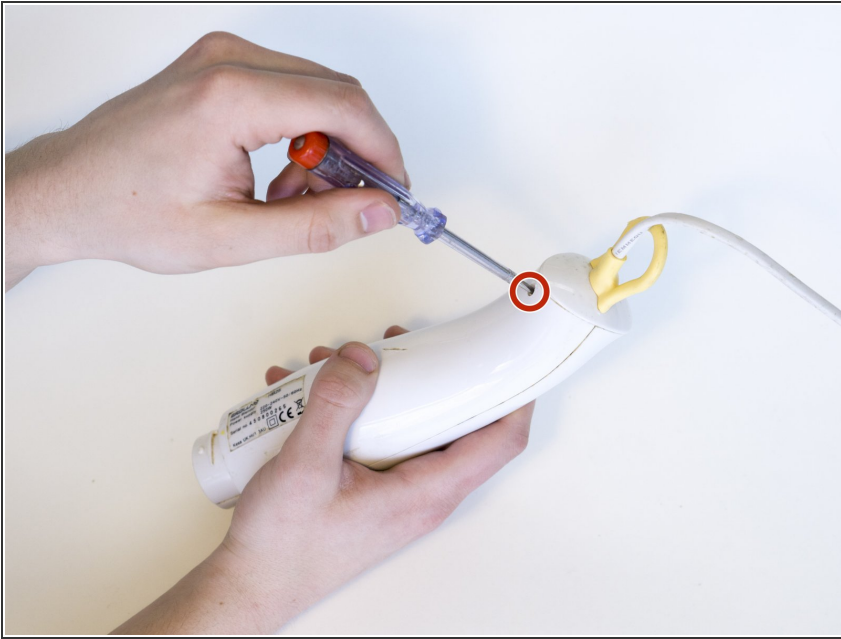
INTRODUCTION

This guide provides the necessary information on fully disassembling the Proline HB25 hand blender.

TOOLS:

- [Phillips #00 Screwdriver](#) (1)
 - [Flathead Screwdriver](#) (1)
 - [Spanner 3.0 Screwdriver](#) (1)
-

Step 1 — ProLine HB25 Disassembly



- Unscrew the screw on the back of the product.

Step 2



- Pull out the backtab of the housing.
- Push in the snapfits with, for instance, a screwdriver.

Step 3



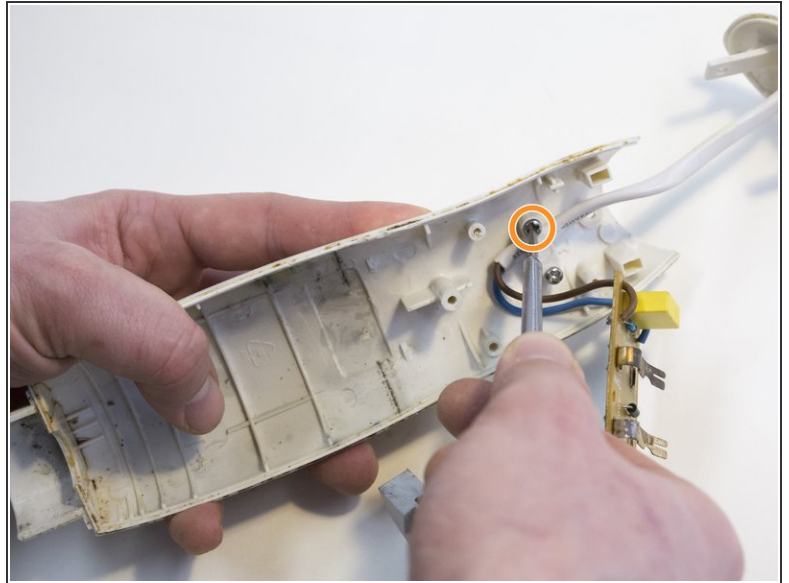
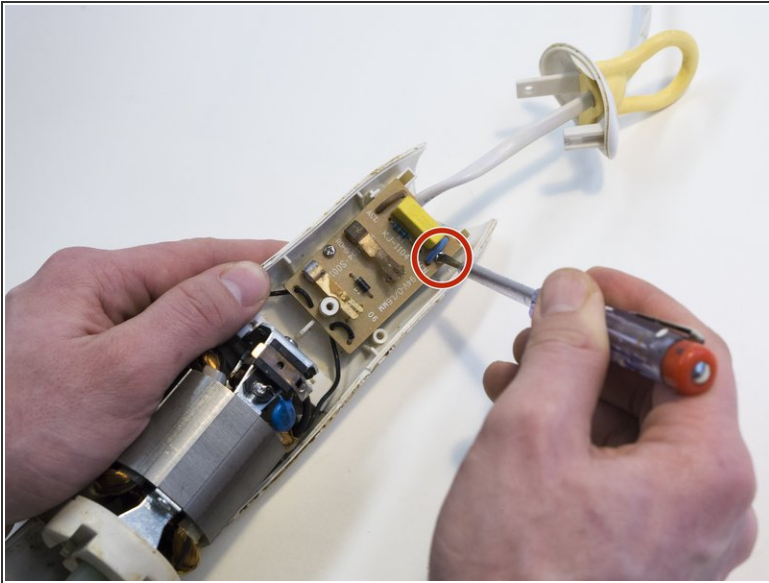
- Separate the housing with calibrated force.
- ⚠ Keep your fingers away from the housing and do not bend or break the housing.
- Use a flathead screwdriver to push out the lower function button.
- Remove the separating device.

Step 4



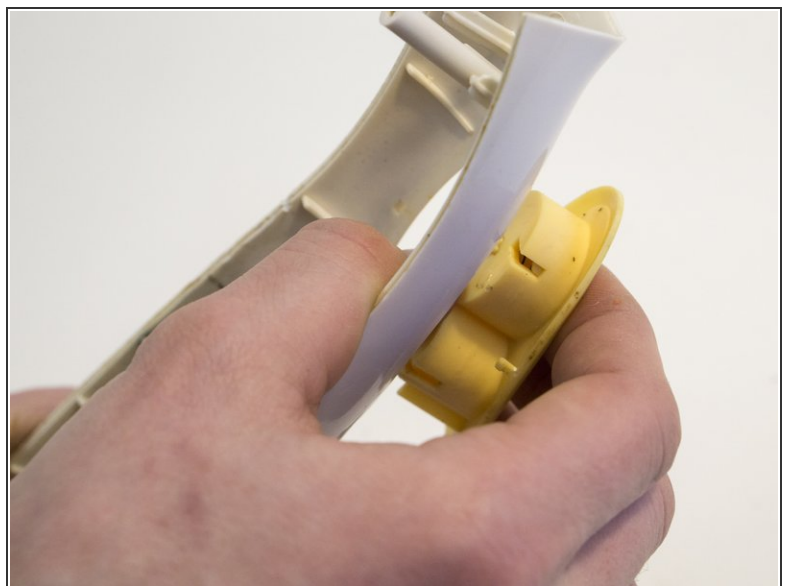
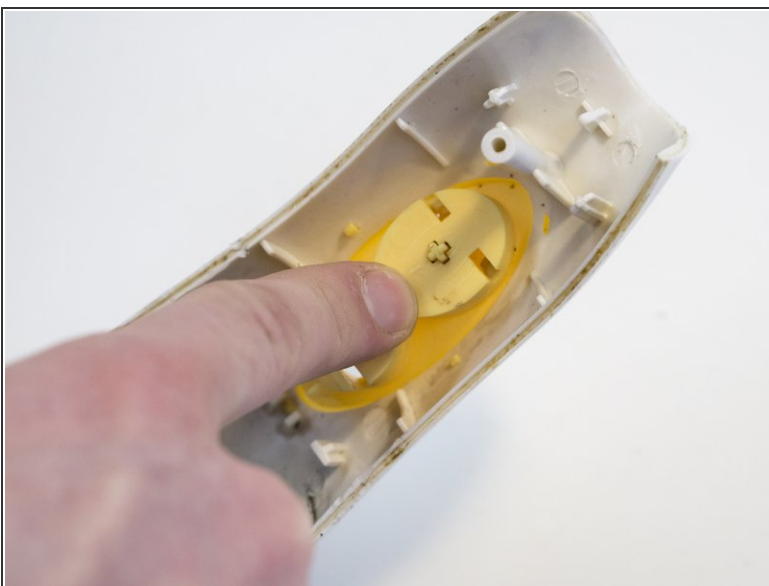
- Unscrew the hidden screw under the button.

Step 5



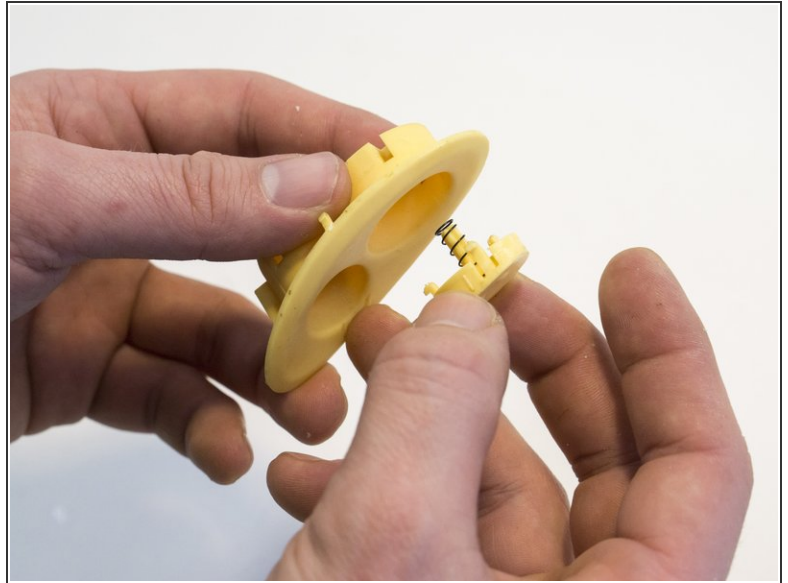
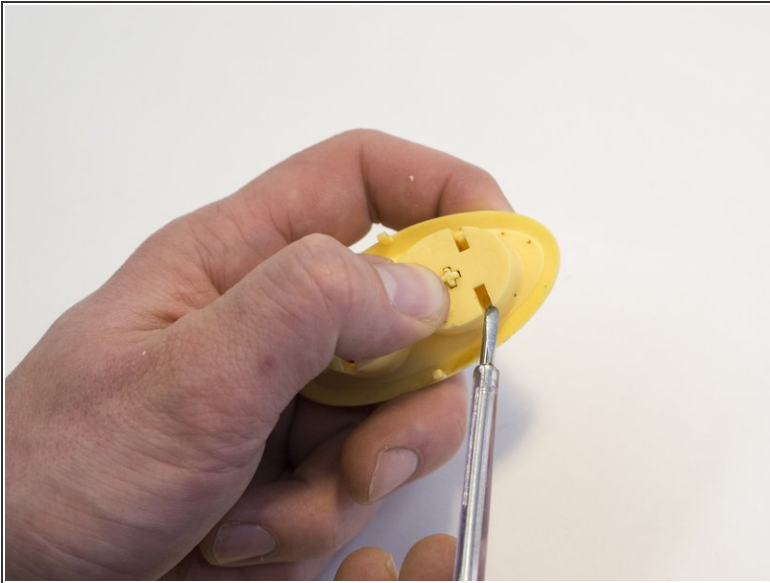
- Open the housing.
- Unscrew the circuit board.
- Unscrew the wire lock.

Step 6




- Push the housing of the button out of the housing.

Step 7



- Push on the side of the housing of the button to push the button out of the housing.

 The spring can jump away when you push out the button.

To reassemble your device, follow these instructions in reverse order.

This document was last generated on 2019-07-15 08:51:43 PM.