



Samsung BD-D5500 Disassembly

This is how you remove the top off of Samsung BD-D5500.

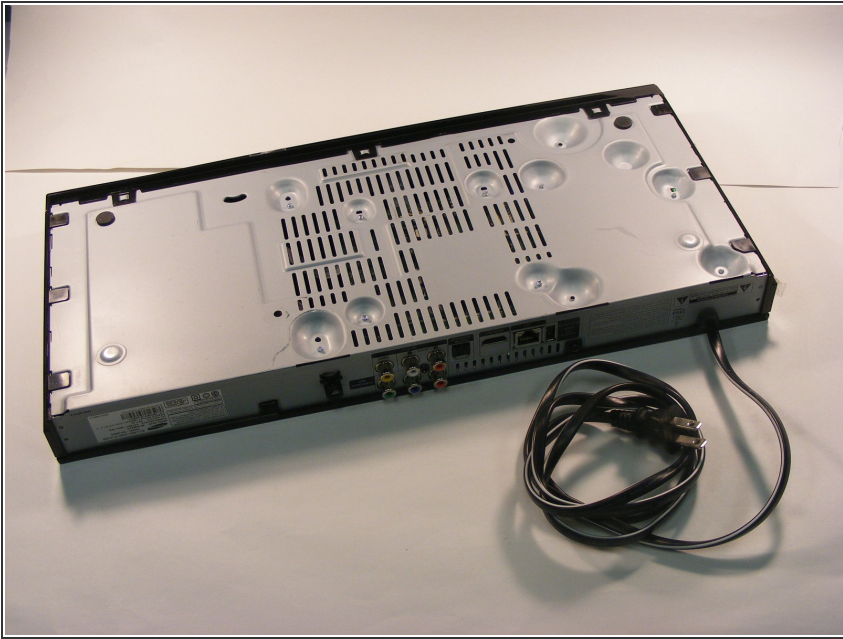
Written By: Kenya Wilson



 **TOOLS:**

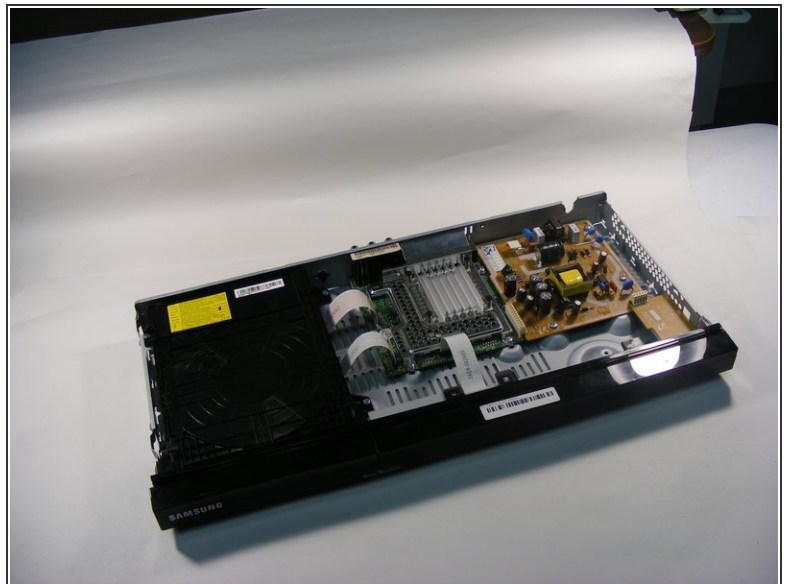
- [iFixit Opening Tools](#) (1)
 - [Spudger](#) (1)
 - [Phillips #2 Screwdriver](#) (1)
-

Step 1 — Samsung BD-D5500 Disassembly



- To begin, turn the device over so that the bottom is facing up. There are 9 black clips that attach the plastic body to the case. Remove these clips from the case.

Step 2



- Use a Phillips #2 screwdriver to remove the screw that attaches the top cover to the rear of the device. This will allow you to remove the cover.

i This is how your device will look after you remove the top.

To reassemble your device, follow these instructions in reverse order.