



# Mercedes W123 Hazard Switch Disassembly

Disassemble the intermittent (hazard) button for cleaning the contacts or binding

Written By: Carlos



---

## INTRODUCTION

How to disassemble the emergency lights, intermittent or hazard, button for cleaning the contacts, repairing loose pieces, or clogging. Or if you want to change an old cover or a broken casing.

---

### TOOLS:

- [Destornillador plano pequeño \(1\)](#)
-

## Step 1 — Mercedes W123 Hazard Switch Disassembly



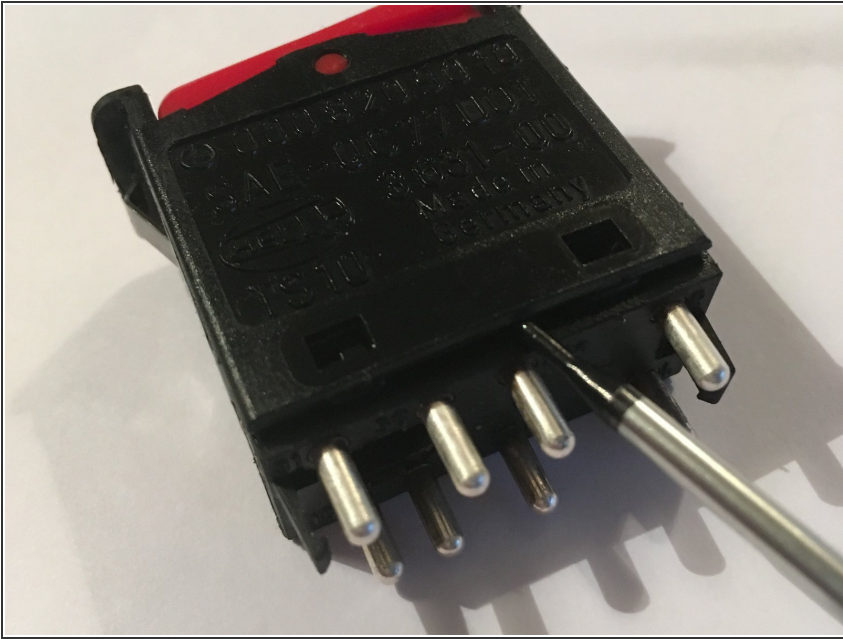
- First you must remove the switch for it revises the other guides of this page

## Step 2



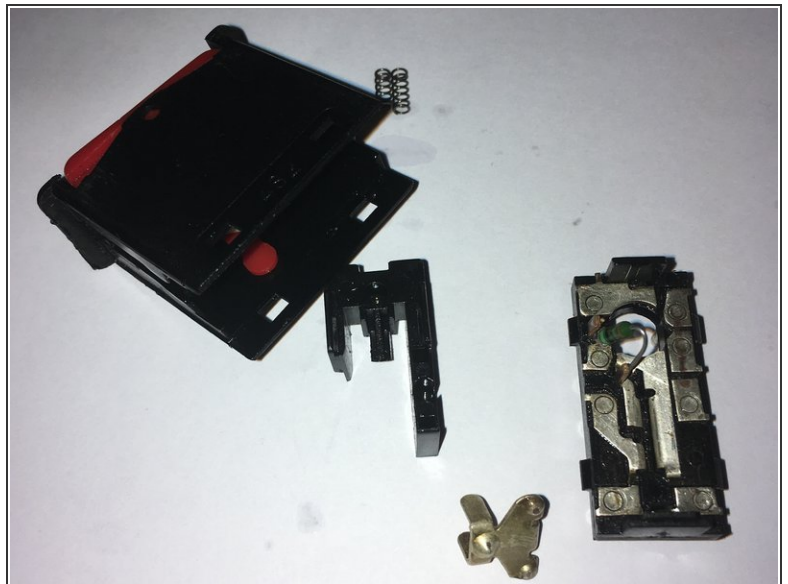
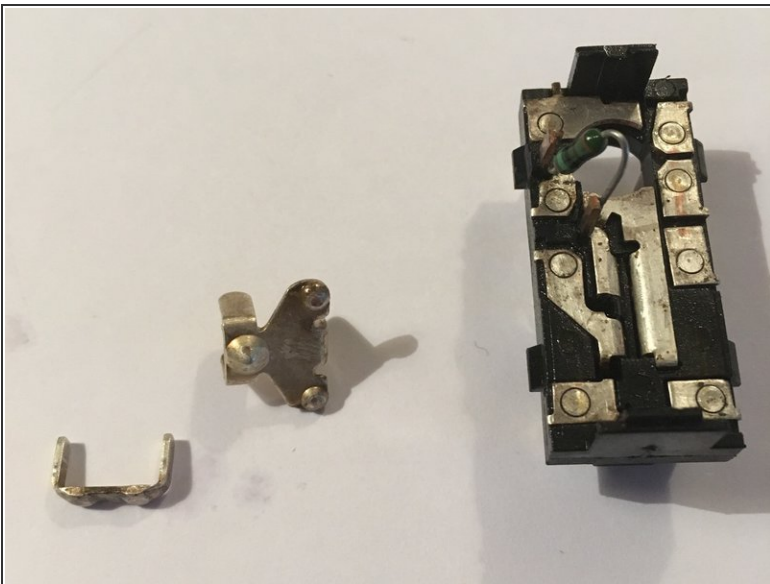
- Once removed you must remove the bulb from the switch, this goes under pressure can help you with a small pliers.

### Step 3



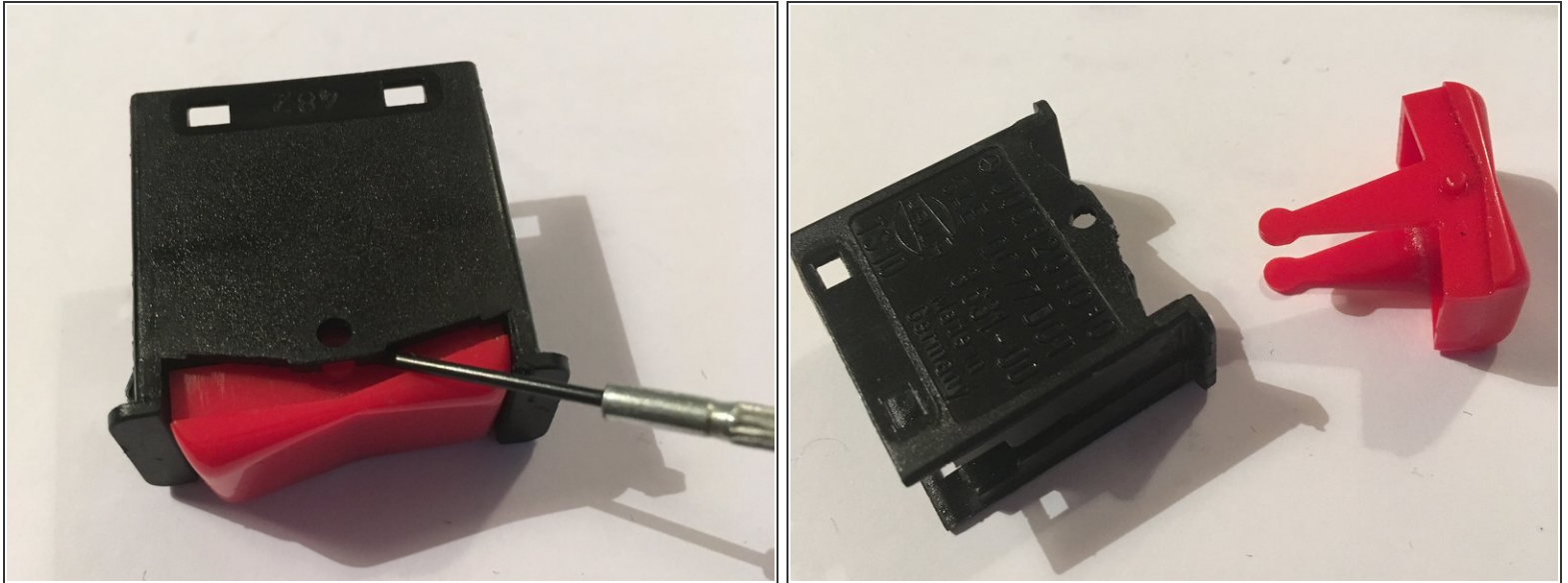
- You must insert a blade or flat (thin) screwdriver into the existing slot in the base between the two small clasps, and gently pry

### Step 4



- Now you have in your hands the piece with contacts to clean, be careful that inside the body are 3 pieces (1 plastic and two metal) and two small springs that can escape

## Step 5



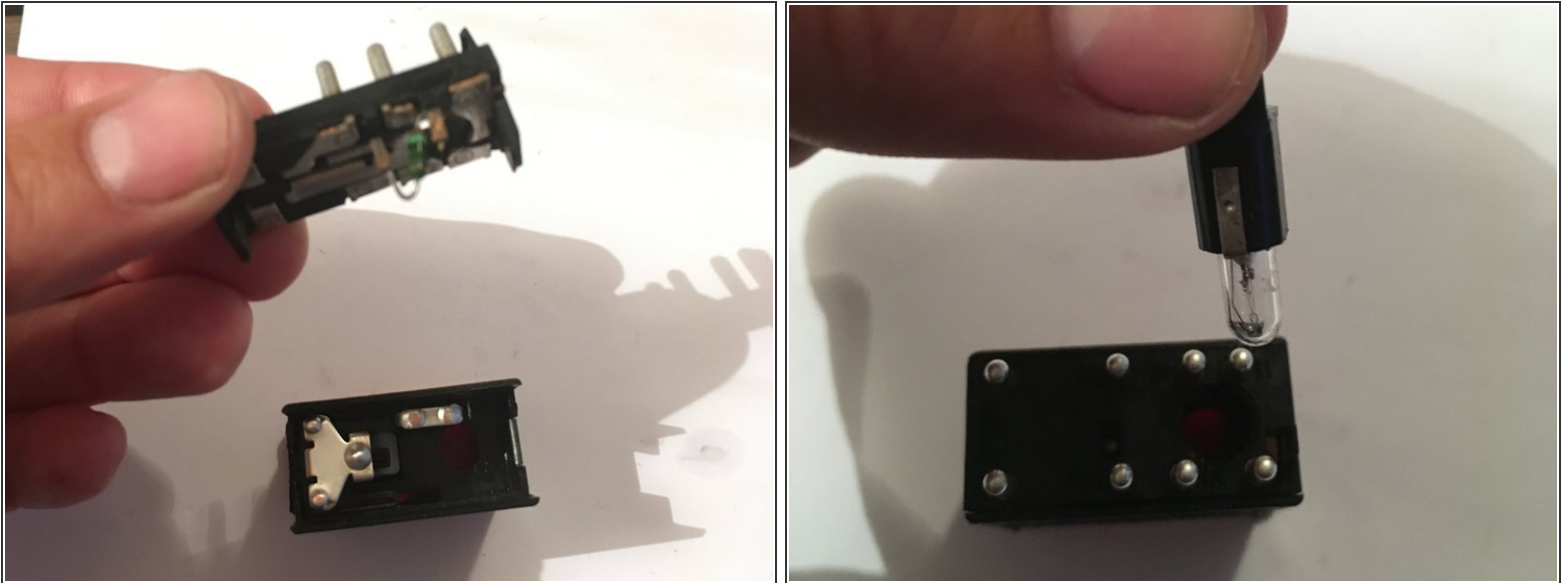
- This step is optional, in case you have to change the red cover, or repair it.
- With the thin blade screwdriver, you must pry between the red shaft and the black plastic  
**CAUTION!** Do not insert the screwdriver too much, because when leveraging you can break the legs of the red switch, which activates the mechanism

## Step 6



- Once the contacts are clean, we put back together
- First we put the two springs in their spaces.
- Then we put the contacts on the springs, to finally take the assembly and place it inside the body of the switch

## Step 7



- finally we take the contact panel and place it in the switch body, we press until it clicks! Be careful to place the pieces so that the hole for the vial is aligned.
- Finally if you removed the red switch enter again until you click! The triangle icon should go to the side where the ampule is.

For reassembling your device, follow these instructions in the reverse order.